

BALDOR • RELIANCE

Customer information packet

VJPFPM2515T-5

20HP, 1755RPM, 3PH, 60HZ, 256JP, 3936M, OPSB, F

Class -

Division - Not Applicable

Specifications

Enclosure	OPSB
Frame	256JP
Frame Material	Steel
Frequency	60.00 Hz
Haz Area Division	Not Applicable
Motor Letter Type	Three Phase
Output @ Frequency	20.000 HP @ 60 HZ
Phase	3
Synchronous Speed @ Frequency	1800 RPM @ 60 HZ
Voltage @ Frequency	575.0 V @ 60 HZ
Agency Approvals	CSA EEV UL
Ambient Temperature	40 °C
Auxillary Box	No Auxillary Box
Auxillary Box Lead Termination	None
Base Indicator	No Mounting
Bearing Grease Type	Polyrex EM (-20F +300F)
Blower	None
Current @ Voltage	19.600 A @ 575.0 V
Design Code	B
Drip Cover	Drip Cover
Duty Rating	CONT
Efficiency @ 100% Load	91.0 %
Electrically Isolated Bearing	Not Electrically Isolated
Feedback Device	NO FEEDBACK
Front Face Code	Standard
Front Shaft Indicator	None
Heater Indicator	No Heater
High Voltage Full Load Amps	19.6 a
Insulation Class	F
Inverter Code	Inverter Ready
KVA Code	F

Part detail

Revision	N
Type	AC
Mech. spec.	39N092
Base	
Status	PRD/A
Elec. spec.	39WGX987
Layout	39LYN092
Eff. date	06-26-2024
CD Diagram	CD0382
Poles	04
Leads	6#12
Proprietary	False
Created date	07-22-2016

Lifting Lugs	Vertical Lifting Lugs
Locked Bearing Indicator	Locked Bearing
Motor Lead Exit	Ko Box
Motor Lead Quantity/Wire Size	6 @ 12 AWG
Motor Lead Termination	Flying Leads
Motor Standards	NEMA
Motor Type	3936M
Mounting Arrangement	F1
Number of Poles	4
Overall Length	28.07 IN
Power Factor	83
Product Family	Fire Pump Motor
Pulley End Bearing Type	Ball
Pulley Face Code	C-Face
Pulley Shaft Indicator	Tapped & Key
Rodent Screen	Included
Service Factor	1.15
Shaft Diameter	1.750 IN
Shaft Extension Location	Pulley End
Shaft Ground Indicator	No Shaft Grounding
Shaft Rotation	Reversible
Shaft Slinger Indicator	Shaft Slinger
Speed	1755 rpm
Speed Code	Single Speed
Starting Method	Wye Start - Delta Run
Thermal Device - Bearing	None
Thermal Device - Winding	None
Vibration Sensor Indicator	No Vibration Sensor
Winding Thermal 1	None
Winding Thermal 2	None

Nameplate

NP3454L

CAT.NO.	VJPFPM2515T-5	CUST P/N		I.P.	23
SPEC.	39N092X987H2	SER.NO.		FRAME	256JP
HZ	60	HP	20	RPM	1755
VOLTS	575	CODE	F	VOLTS	
AMPS	19.6	DES	B	AMPS	
EFF	91	SER.F.	1.15	PF	83
RATING	40C AMB-CONT	DE BRG	6309	GREASE	POLYREX EM
BLANK		ODE BRG	6208	MTR. WT.	208
		CLASS	F	PH	3
		ENCL	OPSB	CC	010A
HTR-VOLTS		HTR-AMPS		HTR-WATTS	

AC Induction Motor Performance Data

Record # 58294

Typical performance - not guaranteed values

Winding: 39WGX987-R001		Type: 3936M	Enclosure: OPSB		
Nameplate Data			575 V, 60 Hz: Single Voltage Motor		
Rated Output (HP)	20	Full Load Torque	59.2 LB-FT		
Volts	575	Start Configuration	direct on line		
Full Load Amps	19.6	Breakdown Torque	177 LB-FT		
R.P.M.	1755	Pull-up Torque	73.5 LB-FT		
Hz	60	Phase	3	Locked-rotor Torque	105 LB-FT
NEMA Design Code	B	KVA Code	F	Starting Current	109 A
Service Factor (S.F.)	1.15	No-load Current	7.71 A		
NEMA Nom. Eff.	91	Power Factor	83	Line-line Res. @ 25°C	0.916 Ω
Rating - Duty	40C AMB-CONT		Temp. Rise @ Rated Load	48°C	
S.F. Amps			Temp. Rise @ S.F. Load	61°C	
			Locked-rotor Power Factor	35.6	
			Rotor inertia	1.57 LB-FT ²	

Load Characteristics 575 V, 60 Hz, 20 HP

% of Rated Load	25	50	75	100	125	150	S.F.
Power Factor	48	70	79	83	86	86	85
Efficiency	87.7	91.6	91.9	91.1	89.9	88.2	90.4
Speed	1790	1781	1770	1759	1746	1730	1751
Line amperes	8.98	11.8	15.5	19.6	24.4	29.6	22.5

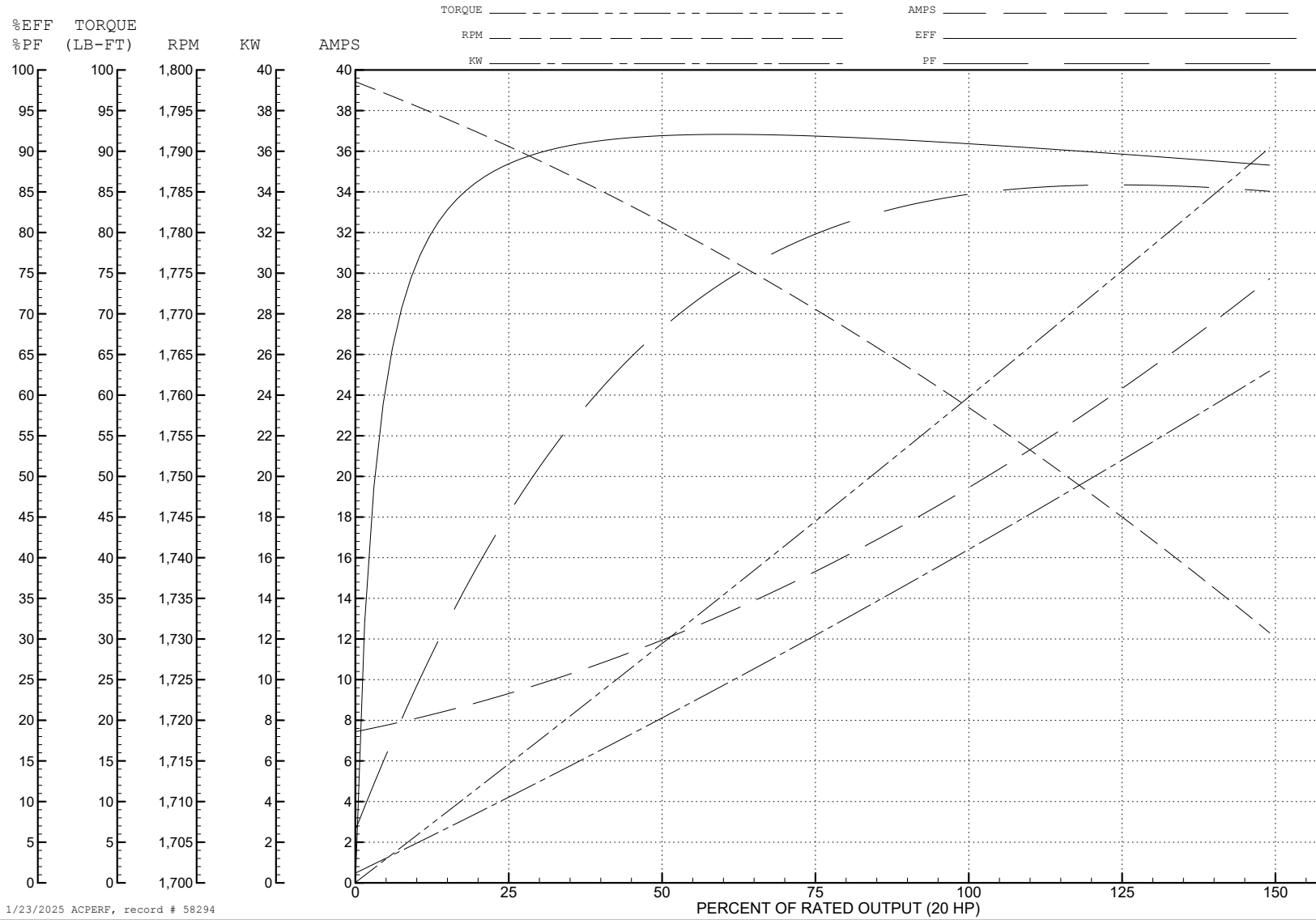
ABB Motors and Mechanical Inc.

WINDING # 39WGX987

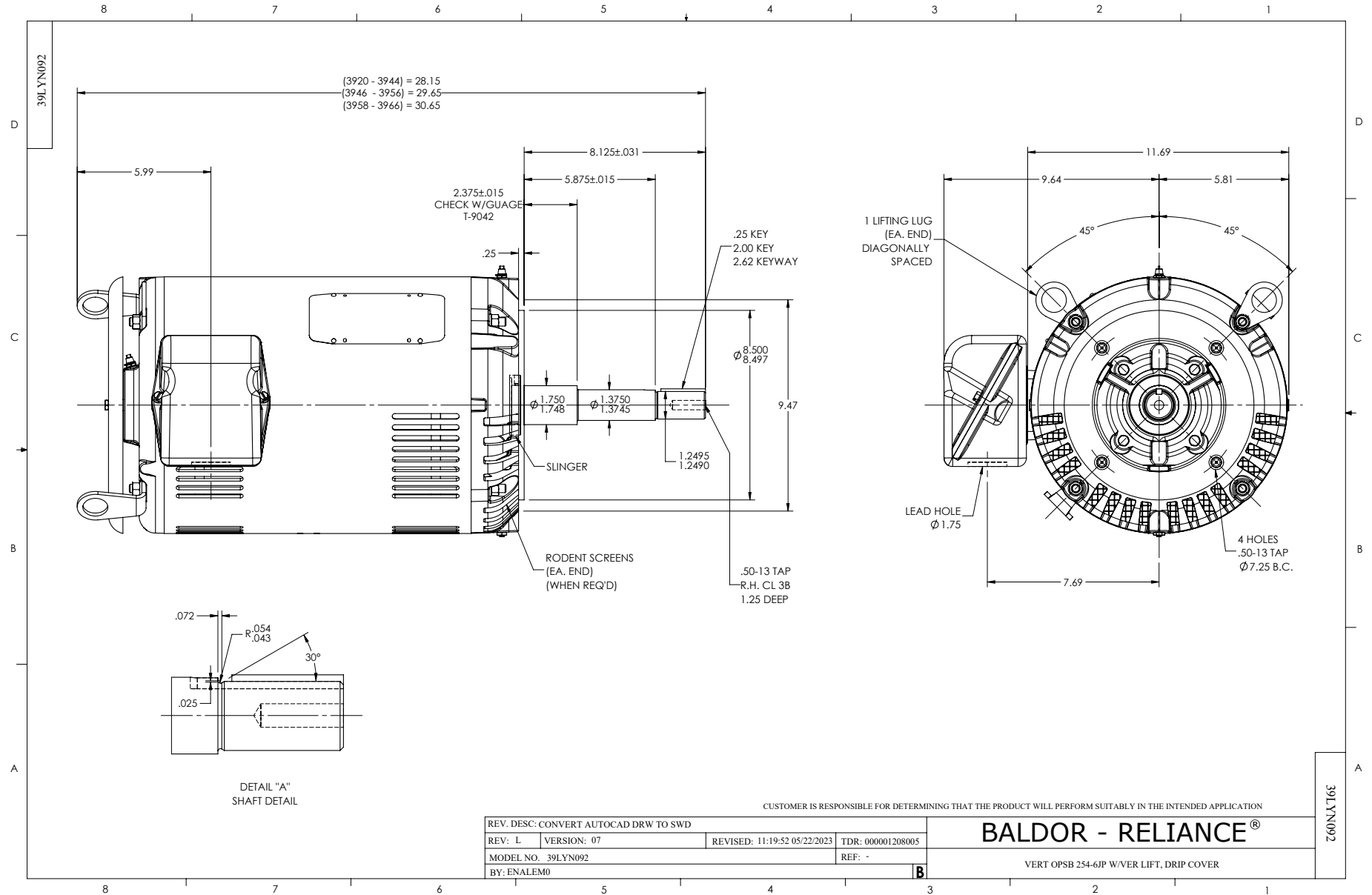
Typical performance - not guaranteed values.

20 HP 3 PH 60 HZ 1755 RPM 575 V 3936M

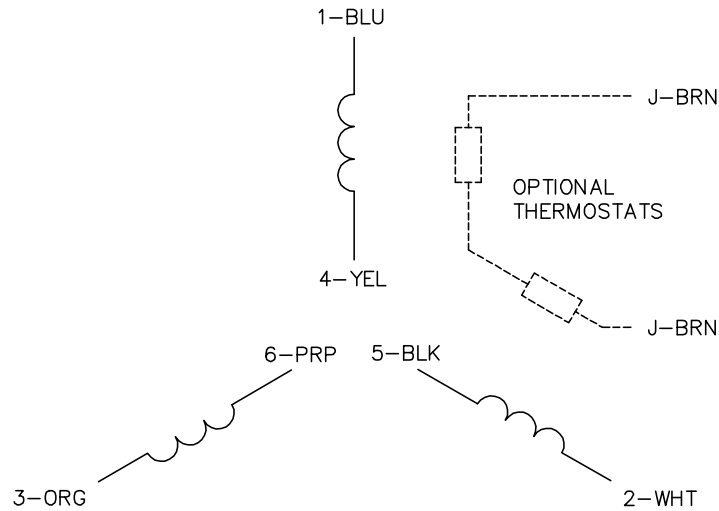
TORQUES (LB-FT): PO=177 PU=73.5 LR=105 LRA=109



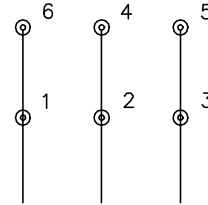
1/23/2025 ACPERF, record # 58294



CD0382

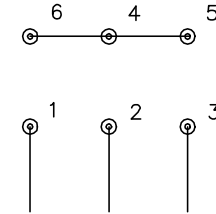


RUN CONNECTION
(1D)



LINE

START CONNECTION
(1Y)



LINE

NOTES:

1. INTERCHANGE ANY TWO LINE LEADS TO REVERSE ROTATION.
2. OPTIONAL THERMOSTATS ARE PROVIDED WHEN SPECIFIED.
3. ACTUAL NUMBER OF INTERNAL PARALLEL CIRCUITS MAY BE A MULTIPLE OF THOSE SHOWN ABOVE.
4. LEAD COLORS ARE OPTIONAL. LEADS MUST ALWAYS BE NUMBERED AS SHOWN.
5. FOR ACROSS-THE-LINE STARTING, USE 'RUN' CONNECTION.

CD0382

REV. DESC: ADD CLASS CONN00000007		
REV. LTR: F	VERSION: 01	TDR: 000001099922
FILE: \AAA\00005\243	REVISED: 09:05:32 02/19/2019	BY: ENBRIRO
MTL: -	© □	

BALDOR - RELIANCE®

3PH, SV, 6 LEADS, Y START/D RUN

SH 1 of 1