

# ABB BALDOR RELIANCE III

---

## Customer information packet

VHECP4310T

60HP, 3550RPM, 3PH, 60HZ, 364HP, 1452M, TEFC, F

Class - None

Division - Not Applicable

**Specifications**

<b>Enclosure</b>	TEFC
<b>Frame</b>	364HP
<b>Frame Material</b>	Iron
<b>Frequency</b>	60.00 Hz
<b>Haz Area Class and Group</b>	None
<b>Haz Area Division</b>	Not Applicable
<b>Motor Letter Type</b>	Three Phase
<b>Output @ Frequency</b>	60.000 HP @ 60 HZ
<b>Phase</b>	3
<b>Synchronous Speed @ Frequency</b>	3600 RPM @ 60 HZ
<b>Voltage @ Frequency</b>	230.0 V @ 60 HZ 460.0 V @ 60 HZ
<b>Agency Approvals</b>	NEMA PREMIUM CSA EEV
<b>Ambient Temperature</b>	40 °C
<b>Auxiliary Box</b>	NO AUXILLARY BOX
<b>Base Indicator</b>	Bracket Mounted
<b>Bearing Grease Type</b>	Polyrex EM (-20F +300F)
<b>Current @ Voltage</b>	65.100 A @ 460.0 V 130.000 A @ 230.0 V
<b>Design Code</b>	B
<b>Drip Cover</b>	Drip Cover
<b>Duty Rating</b>	CONT
<b>Efficiency @ 100% Load</b>	95.0 %
<b>Feedback Device</b>	NO FEEDBACK
<b>Heater Indicator</b>	No Heater
<b>High Voltage Full Load Amps</b>	65.1 a
<b>Insulation Class</b>	F
<b>Inverter Code</b>	Inverter Ready
<b>KVA Code</b>	G
<b>Lifting Lugs</b>	Standard Lifting Lugs
<b>Motor Lead Quantity/Wire Size</b>	3 @ 4 AWG

**Part Detail**

<b>Revision</b>	G
<b>Type</b>	AC
<b>Mech. spec.</b>	
<b>Base</b>	
<b>Status</b>	PRD/A
<b>Elec. spec.</b>	A36WG0760
<b>Layout</b>	617428-035
<b>Eff. date</b>	08-12-2025
<b>CD Diagram</b>	416820-002
<b>Poles</b>	02
<b>Leads</b>	3#4,6#6
<b>Proprietary</b>	False
<b>Created date</b>	10-19-2010

<b>Motor Standards</b>	<b>NEMA</b>
<b>Motor Type</b>	<b>A36056M</b>
<b>Mounting Arrangement</b>	<b>F1</b>
<b>Number of Poles</b>	<b>2</b>
<b>Overall Length</b>	<b>35.36 IN</b>
<b>Power Factor</b>	<b>91</b>
<b>Pulley End Bearing Type</b>	<b>Ball</b>
<b>Pulley Face Code</b>	<b>P-Base</b>
<b>Service Factor</b>	<b>1.15</b>
<b>Shaft Diameter</b>	<b>1.625 IN</b>
<b>Shaft Ground Indicator</b>	<b>No Shaft Grounding</b>
<b>Shaft Rotation</b>	<b>Reversible</b>
<b>Shaft Slinger Indicator</b>	<b>Shaft Slinger</b>
<b>Speed</b>	<b>3560 rpm</b>
<b>Speed Code</b>	<b>Single Speed</b>
<b>Starting Method</b>	<b>Direct on line</b>
<b>Thermal Device - Bearing</b>	<b>None</b>
<b>Thermal Device - Winding</b>	<b>None</b>

**Nameplate**

**000613007EW**

<b>CAT.NO.</b>	VHECP4310T	<b>SPEC NO.</b>	P36G3416						
<b>HP</b>	60	<b>AMPS</b>	130/65.1	<b>VOLTS</b>	230/460	<b>DESIGN</b>	B		
<b>FRAME</b>	364HP	<b>RPM</b>	3560	<b>HZ</b>	60	<b>AMB</b>	40	<b>SF</b>	1.15
<b>DRIVE END BEARING</b>	65BC03J30X	<b>PH</b>	3	<b>DUTY</b>	CONT	<b>INSUL.CLASS</b>	F		
<b>OPP D.E. BEARING</b>	65BC03J30X	<b>TYPE</b>	P	<b>ENCL</b>	TEFC	<b>CODE</b>	G		
<b>D.E.BRG.DATA</b>	6313	<b>POWER FACTOR</b>	90.7	<b>NEMA NOM EFFICIENCY</b>	95				
<b>O.D.E.BRG.DATA</b>	6313	<b>MAX CORR KVAR</b>	05.0	<b>GUARANTEED EFFICIENCY</b>	94.5				
<b>3/4 LOAD EFF.</b>	95	<b>NEMA NOM/CSA QUOTED EFF</b>							
<b>SER.NO.</b>		<b>MOTOR WEIGHT</b>							

---

**000901002AAA**

---

SUIT FOR 208 V AT 144 AMPS


---

CUSTOMER INFORMATION PACKET		VHECP4310T - 60HP, 3550RPM, 3PH, 60HZ, 364HP, 1452M, TEFC, F				
FRAME	HP	TYPE	PHASE/ HERTZ	RPM	VOLTS	
364HP	60	P	3/60	3560	230/460	

AMPS	DUTY	AMB °C/ INSUL	S.F.	NEMA DESIGN	CODE LETTER	ENCLOSURE
130/65.1	CONT	40/F	1.15	F	G	TEFC

E/S	ROTOR	TEST S.O.	TEST DATE	STATOR RES. @25 °C OHMS (BETWEEN LINES)		
491281	418141005XE	---	---	.0254/.101		

**PERFORMANCE**


LOAD	HP	AMPERES	RPM	% POWER FACTOR	% EFFICIENCY
NO LOAD	0	14.1	3600	6.54	0
1/4	15.0	20.8	3590	72.8	93.1
2/4	30.0	33.4	3580	88.2	95.3
3/4	45.0	48.6	3570	90.7	95.5
4/4	60.0	65.1	3559	90.7	95.1
5/4	75.0	82.2	3547	90.3	94.5

**SPEED TORQUE**

	RPM	TORQUE % FULL LOAD	TORQUE LB.-FT.	AMPERES
LOCKED ROTOR	0	203	180	435
PULL UP	1565	176	156	355
BREAKDOWN	3397	233	206	212
FULL LOAD	3559	100	88.5	65.1

AMPERES SHOWN FOR 460 VOLT CONNECTION. IF OTHER CONNECTIONS ARE AVAILABLE, THE AMPERES WILL VARY INVERSELY WITH THE RATED VOLTAGE.

TYPICAL DATA  
XE MOTOR-NEMA NOM. EFF. 95.0 %  
GUARANTEED MIN. EFF. 94.5%

	DRAWN BY: <u>W. L. SMITH</u>	AC MOTOR PERFORMANCE DATA	<b>A36WG0760-R001</b>
	CHECKED BY: <u>G. R. WEBB</u> APPROVED BY: <u>D. M. BYRD</u> DATE: <u>03/11/02</u>		

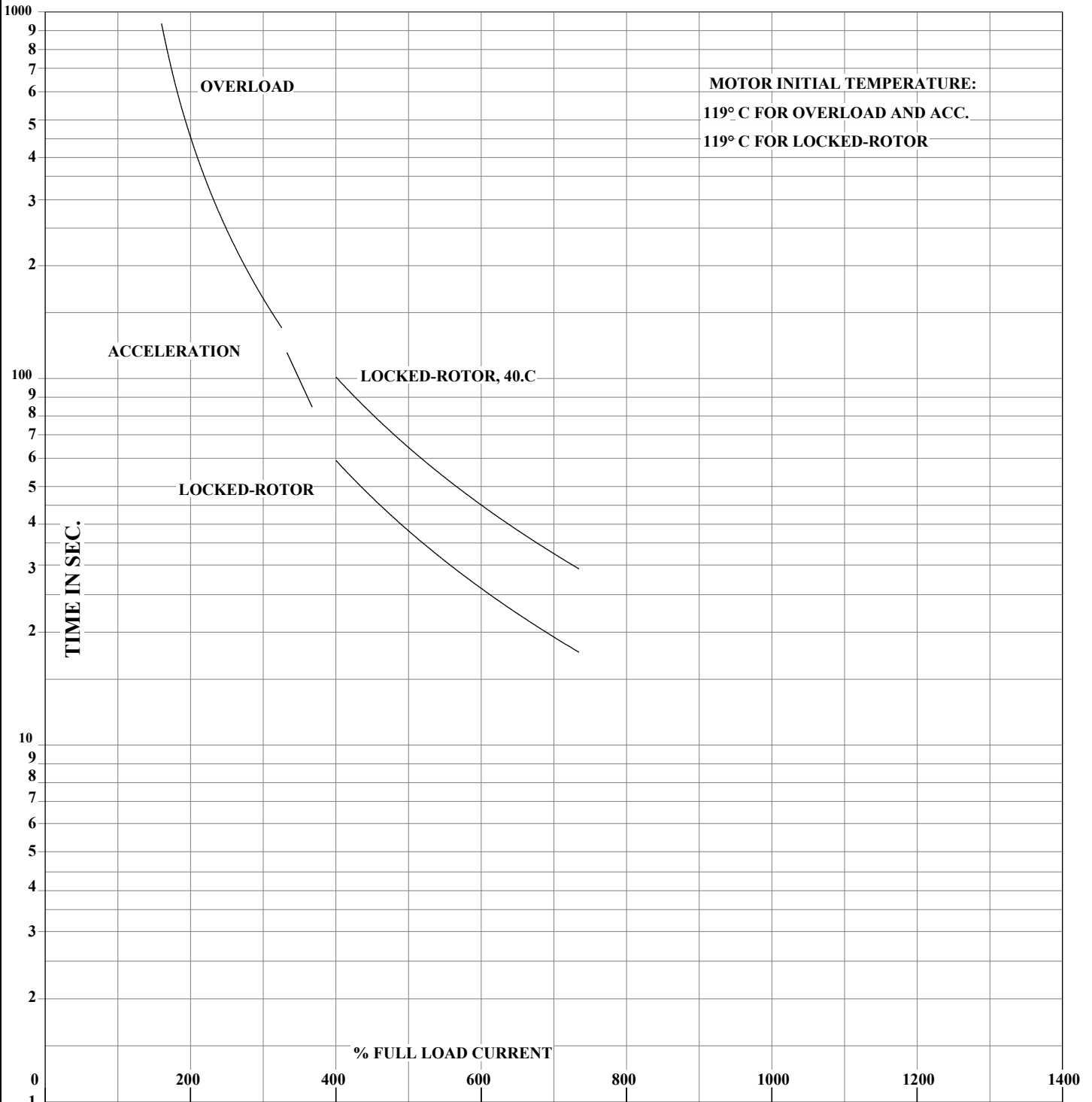


FRAME 364HP  
HP 60  
TYPE P  
PHASE / HERTZ 3/60

RPM 3550  
VOLTS 230/460  
AMPS 130/65.1  
DUTY CONT  
AMB °C / INSUL 40/F

S.F. 1.15  
NEMA DESIGN F  
CODE LETTER G  
ENCLOSURE TEFC  
E/S 491281

ROTOR 418141005XE  
TEST S.O. TYPICAL DATA  
TEST DATE ---  
STATOR RES. @ 25°C .0254/.101  
OHMS (BETWEEN LINES)



THERMAL LIMIT CURVE

AMPERES SHOWN FOR 230/460 VOLT CONNECTION, IF OTHER VOLTAGE CONNECTIONS ARE AVAILABLE, THE AMPERES WILL VARY INVERSELY WITH THE RATED VOLTAGE.

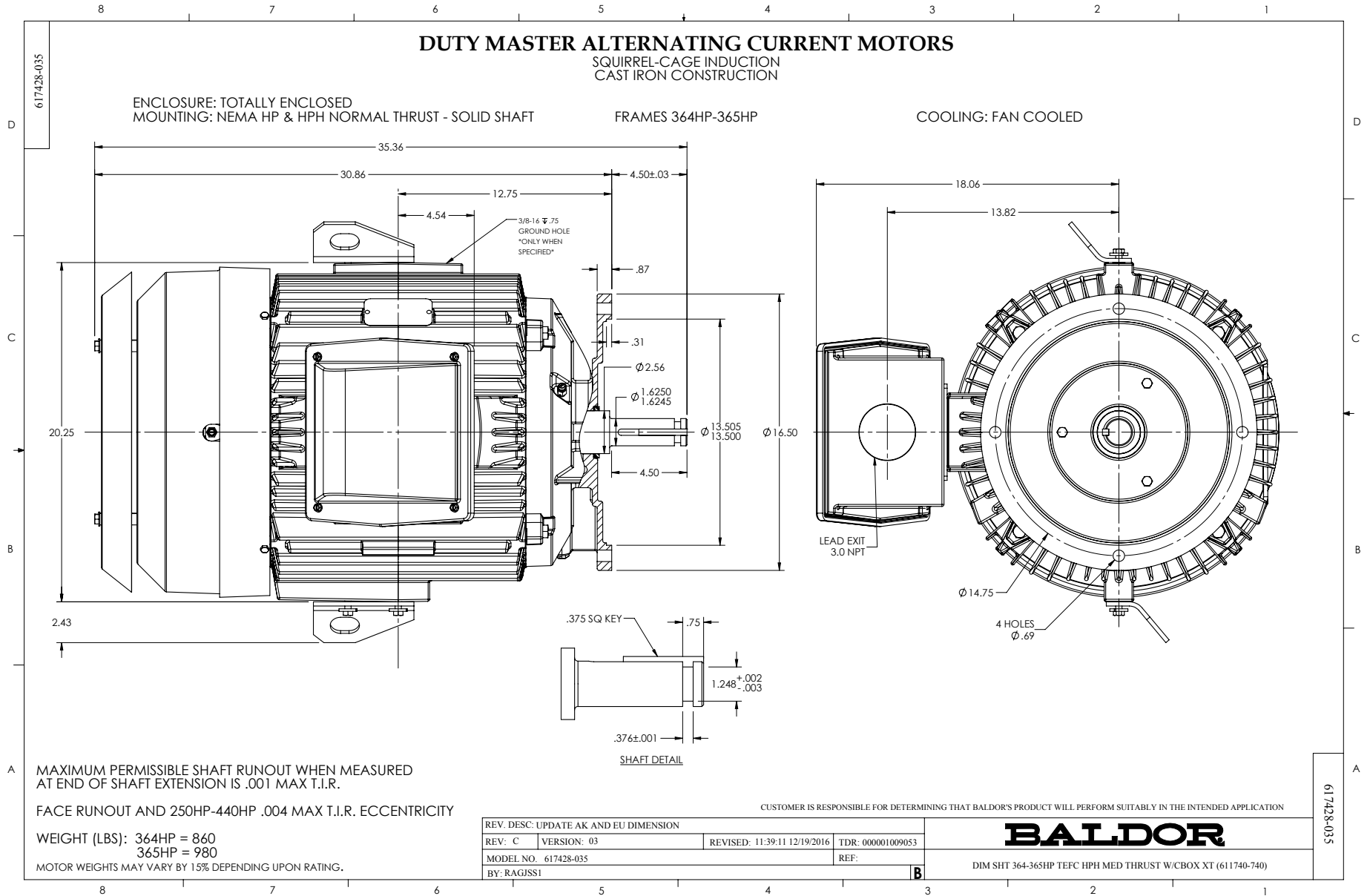


DRAWN BY: W. L. SMITH  
CHECKED BY: G. R. WEBB  
APPROVED BY: D. M. BYRD  
DATE: 03/11/02

AC MOTOR  
PERFORMANCE  
DATA

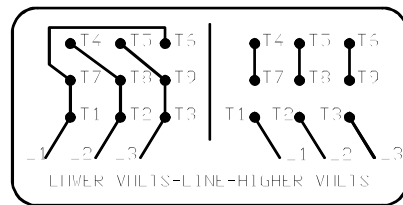
**A36WG0760-R001**

ISSUE DATE 09/26/18



416820-002

A-C MOTOR  
CONNECTION DIAGRAM  
STANDARD 9 LEAD DELTA-CONNECTED



(N.P. 1575-B)

416820-002

REV. DESC: FONT CHANGE FOR PDF SEARCHABLE		
REV. LTR: A	VERSION: 01	TDR: 000001009382
FILE: \MGA\00000\661	REVISED: 02:46:19 02/13/2020	BY: MGHMTT
MTL: -	© □	

**BALDOR - RELIANCE®**

CONN DIAG - STANDARD 9 LEAD, DELTA-CONNECTED

SH 1 of 1