

BALDOR® • RELIANCE™

Customer information packet

VHECP3769T

7.5HP, 3510RPM, 3PH, 60HZ, 213HP, 0726M, TEFC

Class - None

Division - Not Applicable

Specifications

Enclosure	TEFC
Frame	213HP
Frame Material	Iron
Frequency	60.00 Hz
Haz Area Class and Group	None
Haz Area Division	Not Applicable
Motor Letter Type	Three Phase
Output @ Frequency	7.500 HP @ 60 HZ
Phase	3
Synchronous Speed @ Frequency	3600 RPM @ 60 HZ
Voltage @ Frequency	230.0 V @ 60 HZ 460.0 V @ 60 HZ
Agency Approvals	CSA EEV CSA UR
Ambient Temperature	40 °C
Auxillary Box	No Auxillary Box
Auxillary Box Lead Termination	None
Base Indicator	No Mounting
Bearing Grease Type	Polyrex EM (-20F +300F)
Blower	None
Current @ Voltage	18.000 A @ 230.0 V 9.000 A @ 460.0 V
Design Code	B
Drip Cover	Drip Cover
Duty Rating	CONT
Efficiency @ 100% Load	89.5 %
Electrically Isolated Bearing	Not Electrically Isolated
Feedback Device	NO FEEDBACK
Front Face Code	Drip Cover Mounting
Front Shaft Indicator	None
Heater Indicator	No Heater

Part detail

Revision	H
Type	AC
Mech. spec.	07K215
Base	
Status	PRD/A
Elec. spec.	07WGY328
Layout	07LYK215
Eff. date	07-25-2024
CD Diagram	CD0005
Poles	02
Leads	9#14
Proprietary	False
Created date	02-25-2016

High Voltage Full Load Amps	9.0 a
Insulation Class	F
Inverter Code	Inverter Ready
KVA Code	H
Lifting Lugs	Vertical Lifting Lugs
Locked Bearing Indicator	Locked Bearing
Motor Lead Exit	Ko Box
Motor Lead Quantity/Wire Size	9 @ 14 AWG
Motor Lead Termination	Flying Leads
Motor Standards	NEMA
Motor Type	0726M
Mounting Arrangement	F1
Number of Poles	2
Overall Length	22.51 IN
Power Factor	86
Product Family	Chemical Processing (Not DC)
Pulley End Bearing Type	Ball
Pulley Face Code	P-Base
Pulley Shaft Indicator	Standard
Rodent Screen	None
RoHS Status	ROHS COMPLIANT
Service Factor	1.15
Shaft Diameter	1.125 IN
Shaft Extension Location	Pulley End
Shaft Ground Indicator	No Shaft Grounding
Shaft Rotation	Reversible
Shaft Slinger Indicator	No Slinger
Speed	3510 rpm
Speed Code	Single Speed
Starting Method	Direct on line
Thermal Device - Bearing	None
Thermal Device - Winding	None
Vibration Sensor Indicator	No Vibration Sensor
Winding Thermal 1	None

Winding Thermal 2

None

Nameplate

NP1260									
CAT.NO.	VHECP3769T								
SPEC.	07K215Y328G1								
HP	7.5								
VOLTS	230/460								
AMP	18/9								
RPM	3510								
FRAME	213HP	HZ	60	PH	3				
SER.F.	1.15	CODE	H	DES	B	CL	F		
NEMA-NOM-EFF	89.5	PF	86						
RATING	40C AMB-CONT								
CC	010A								
DE	6309	ODE	6206						
ENCL	TEFC	SN							

AC Induction Motor Performance Data

Record # 46530

Typical performance - not guaranteed values

Winding: 07WGY328-R005		Type: 0726M		Enclosure: TEFC	
Nameplate Data			460 V, 60 Hz: High Voltage Connection		
Rated Output (HP)	7.5	Full Load Torque	11.2 LB-FT		
Volts	230/460	Start Configuration	direct on line		
Full Load Amps	18/9	Breakdown Torque	38.8 LB-FT		
R.P.M.	3510	Pull-up Torque	20.4 LB-FT		
Hz	60	Locked-rotor Torque	23.5 LB-FT		
NEMA Design Code	B	Starting Current	61.1 A		
Service Factor (S.F.)	1.15	No-load Current	3.54 A		
NEMA Nom. Eff.	89.5	Line-line Res. @ 25°C	1.19 Ω		
Rating - Duty	40C AMB-CONT	Temp. Rise @ Rated Load	44°C		
S.F. Amps		Temp. Rise @ S.F. Load	53°C		
		Locked-rotor Power Factor	34		
		Rotor inertia	0.237 LB-FT ²		

Load Characteristics 460 V, 60 Hz, 7.5 HP

% of Rated Load	25	50	75	100	125	150	S.F.
Power Factor	52	74	82	87	90	89	89
Efficiency	83.8	89.4	90.5	90.7	89.6	88.3	90
Speed	3581	3559	3537	3512	3486	3456	3496
Line amperes	4.04	5.31	7.04	8.9	10.9	13.3	10.1

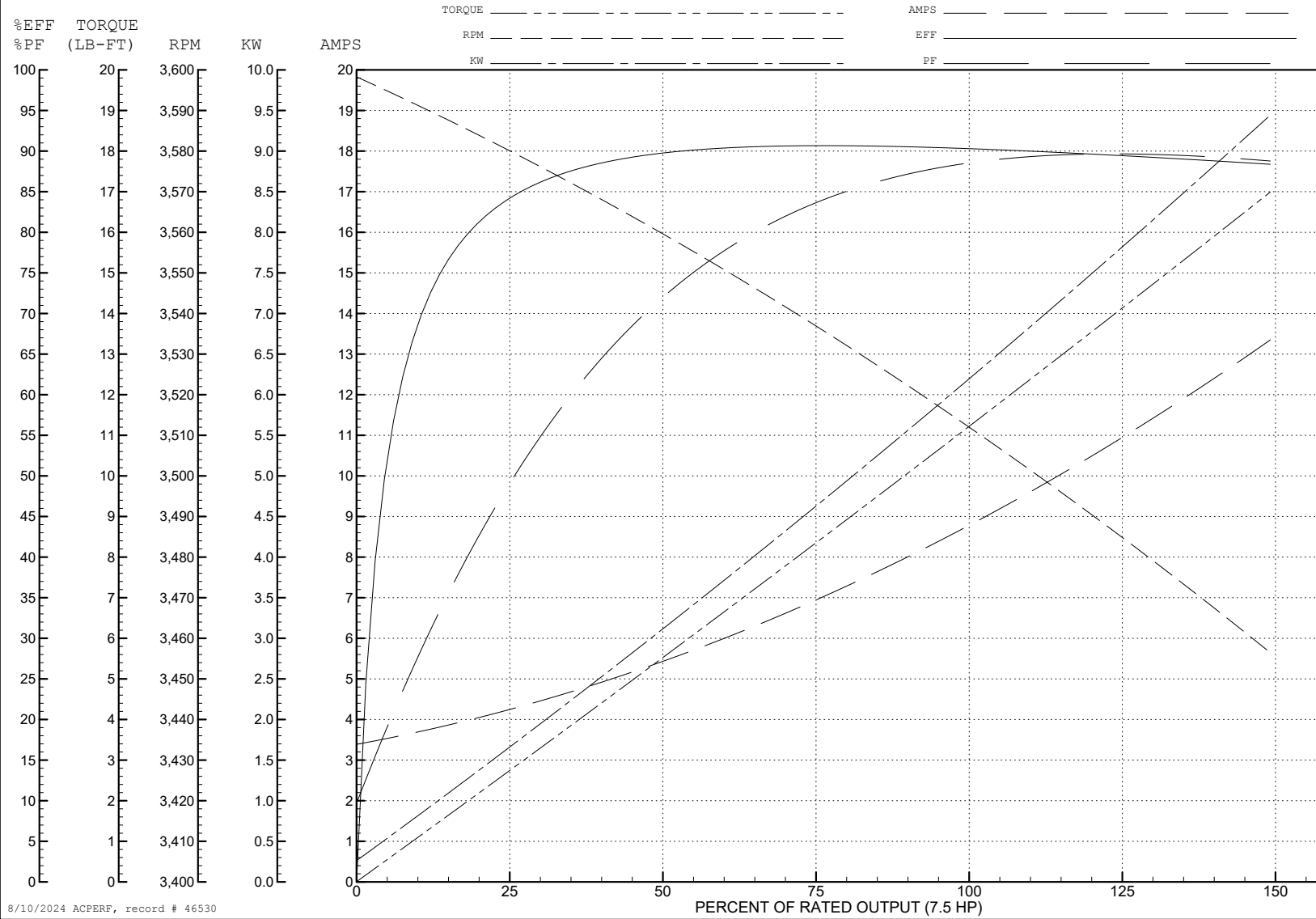
ABB Motors and Mechanical Inc.

WINDING # 07WGY328

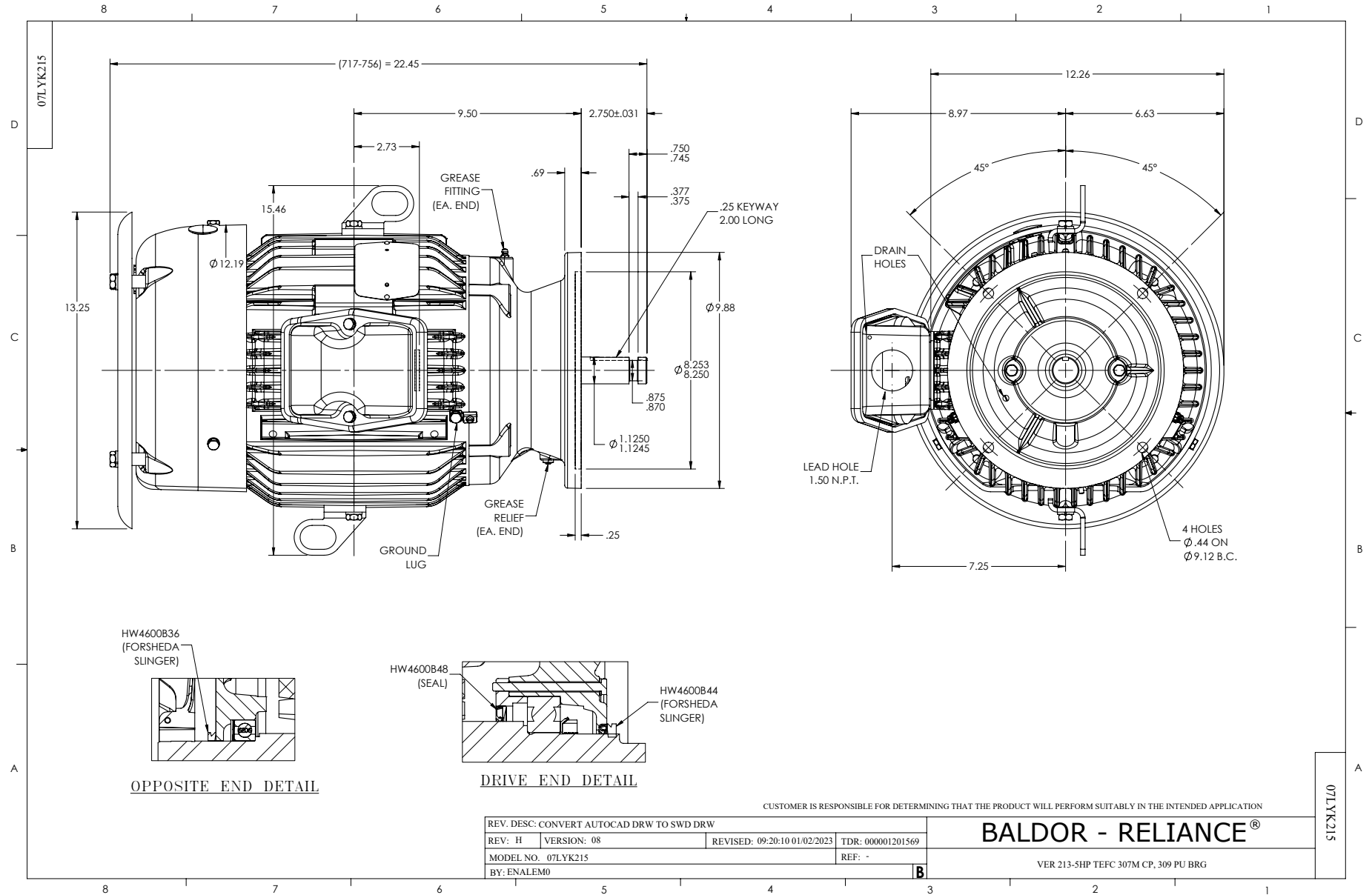
7.5 HP 3 PH 60 HZ 3510 RPM 460 V 0726M

Typical performance - not guaranteed values.

TORQUES (LB-FT): PO=38.8 PU=20.4 LR=23.5 LRA=61.1



8/10/2024 ACPERF, record # 46530



CD0005



LOW VOLTAGE
(2Y)



LINE

HIGH VOLTAGE
(1Y)



LINE

NOTES:

1. INTERCHANGE ANY TWO LINE LEADS TO REVERSE ROTATION.
2. OPTIONAL THERMOSTATS ARE PROVIDED WHEN SPECIFIED.
3. ACTUAL NUMBER OF INTERNAL PARALLEL CIRCUITS MAY BE A MULTIPLE OF THOSE SHOWN ABOVE.
4. LEAD COLORS ARE OPTIONAL. LEADS MUST ALWAYS BE NUMBERED AS SHOWN.

CD0005

REV. DESC: REVISE TO SHOW OPTIONAL COLORS			
REV. LTR: E	BY: JLP	REVISED: 01/19/99 10:15	TDR: 0171435
S00000		FILE: AAA00005140	MDL: -
		MTL: -	

BALDOR ELECTRIC Co.

3PH, DV, 9 LEADS