

ABB BALDOR RELIANCE III

Customer information packet

VHECP3663T

5HP, 3490RPM, 3PH, 60HZ, 184, HP, 0632M, TEFC, F

Class - None

Division - Not Applicable

Specifications

Enclosure	TEFC
Frame	184HP
Frame Material	Iron
Frequency	60.00 Hz
Haz Area Class and Group	None
Haz Area Division	Not Applicable
Motor Letter Type	Three Phase
Output @ Frequency	5.000 HP @ 60 HZ
Phase	3
Synchronous Speed @ Frequency	3600 RPM @ 60 HZ
Voltage @ Frequency	460.0 V @ 60 HZ 230.0 V @ 60 HZ
Agency Approvals	CSA CSA EEV UR
Ambient Temperature	40 °C
Auxiliary Box	NO AUXILLARY BOX
Auxiliary Box Lead Termination	None
Base Indicator	No Mounting
Bearing Grease Type	Polyrex EM (-20F +300F)
Blower	None
Current @ Voltage	12.500 A @ 208.0 V 5.700 A @ 460.0 V 11.400 A @ 230.0 V
Design Code	A
Drip Cover	Drip Cover
Duty Rating	CONT
Efficiency @ 100% Load	90.2 %
Electrically Isolated Bearing	Not Electrically Isolated
Feedback Device	NO FEEDBACK
Front Face Code	Standard
Front Shaft Indicator	None

Part Detail

Revision	U
Type	AC
Mech. spec.	06F448
Base	
Status	PRD/A
Elec. spec.	06WGW730
Layout	06LYF448
Eff. date	05-02-2023
CD Diagram	CD0005
Poles	02
Leads	9#16
Proprietary	False
Created date	10-31-2005

Heater Indicator	No Heater
High Voltage Full Load Amps	5.7 a
Insulation Class	F
Inverter Code	Inverter Ready
KVA Code	M
Lifting Lugs	Vertical Lifting Lugs
Locked Bearing Indicator	Locked Bearing
Motor Lead Exit	Ko Box
Motor Lead Quantity/Wire Size	9 @ 16 AWG
Motor Lead Termination	Flying Leads
Motor Standards	NEMA
Motor Type	0632M
Mounting Arrangement	F1
Number of Poles	2
Overall Length	22.18 IN
Power Factor	90
Product Family	Super-E Chemical Processing
Pulley End Bearing Type	Ball
Pulley Face Code	P-Base
Pulley Shaft Indicator	P-Base Groove & Key
Rodent Screen	None
Service Factor	1.15
Shaft Diameter	1.125 IN
Shaft Extension Location	Pulley End
Shaft Ground Indicator	No Shaft Grounding
Shaft Rotation	Reversible
Shaft Slinger Indicator	No Slinger
Speed	3490 rpm
Speed Code	Single Speed
Starting Method	Direct on line
Thermal Device - Bearing	None
Thermal Device - Winding	None
Vibration Sensor Indicator	No Vibration Sensor
Winding Thermal 1	None

Winding Thermal 2

None

Nameplate

NP1260	
CAT.NO.	VHECP3663T
SPEC.	06F448W730
HP	5
VOLTS	230/460
AMP	11.4/5.7
RPM	3490
FRAME	184HP HZ 60 PH 3
SER.F.	1.15 CODE M DES A CL F
NEMA-NOM-EFF	90.2 PF 90
RATING	40C AMB-CONT
CC	010A
DE	6307 ODE 6206
ENCL	TEFC SN

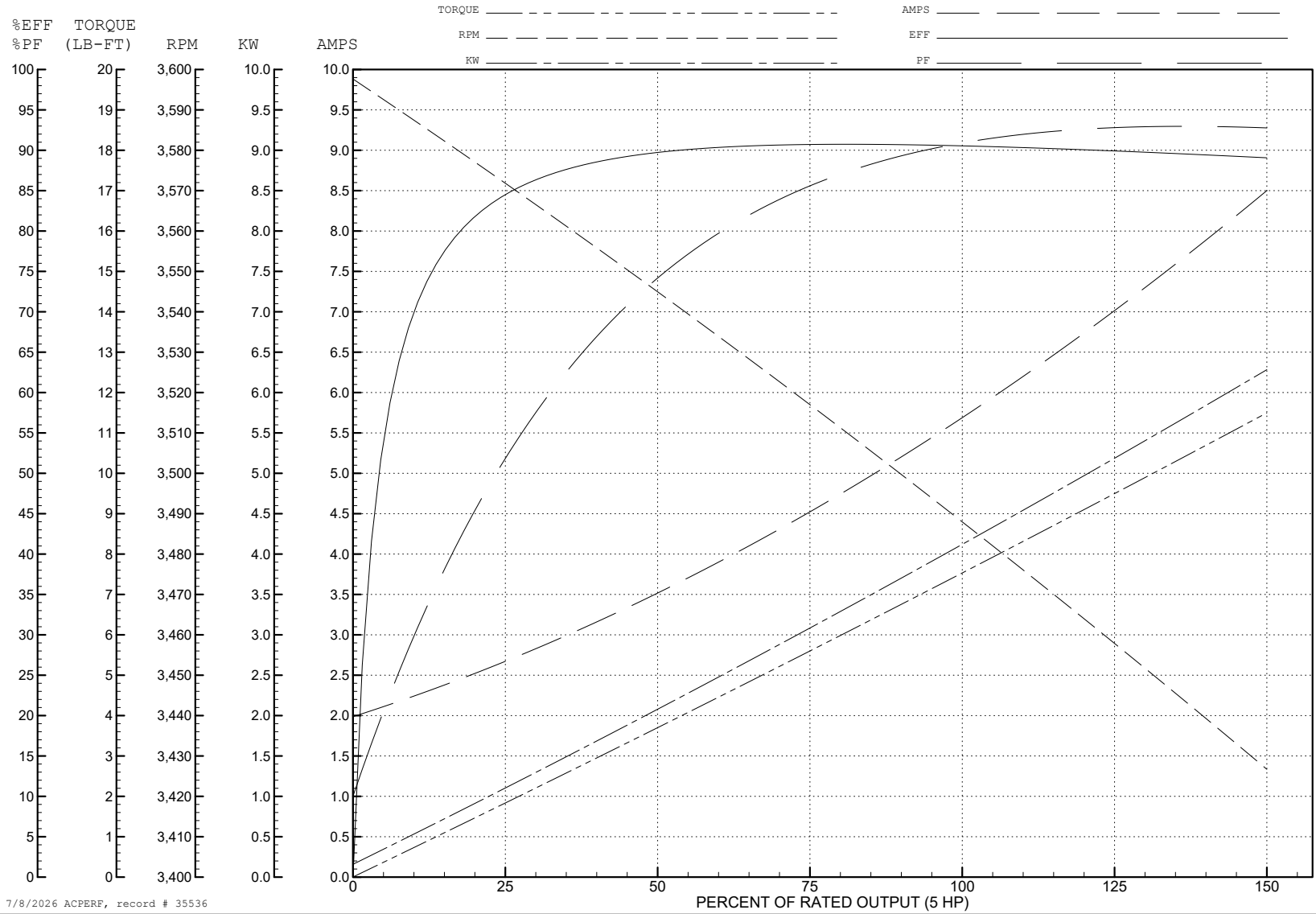
ABB Motors and Mechanical Inc.

WINDING # 06WGW730

Typical performance - not guaranteed values.

5 HP 3 PH 60 HZ 3490 RPM 460 V 0632M

TORQUES (LB-FT): PO=40.1 PU=30.6 LR=36.9 LRA=64.8



7/8/2026 ACPERF, record # 35536

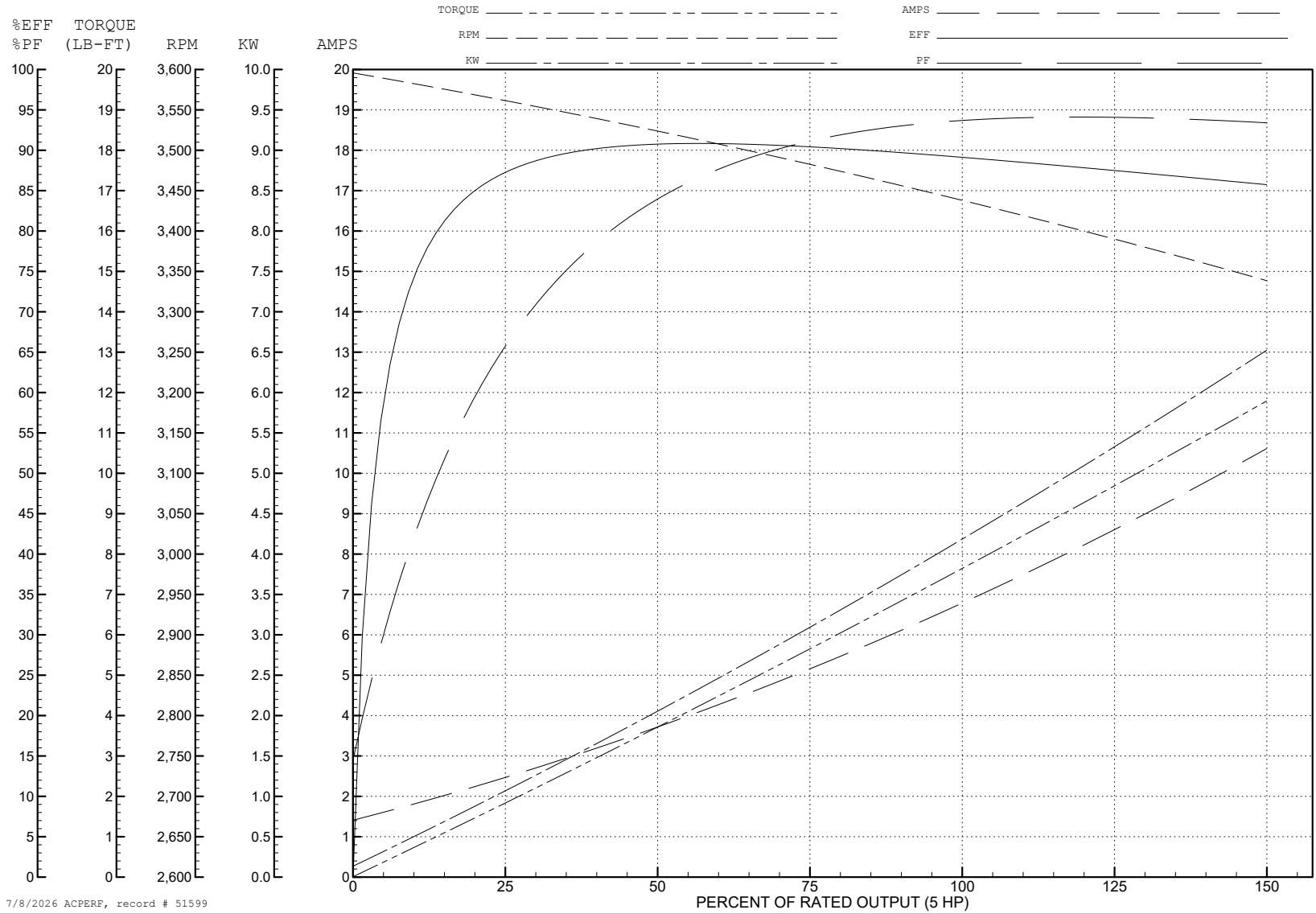
ABB Motors and Mechanical Inc.

WINDING # 06WGW730

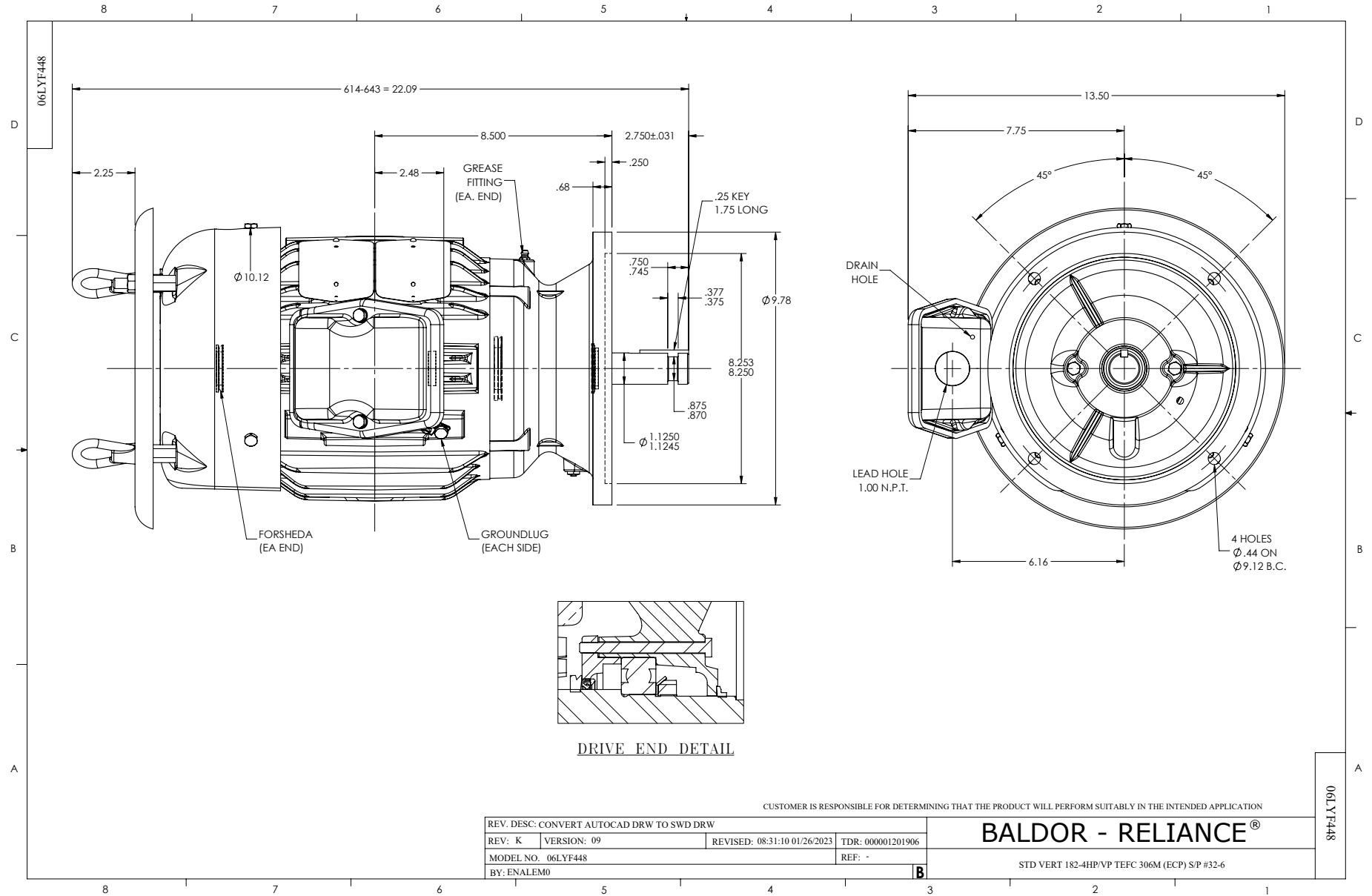
5 HP 3 PH 60 HZ 3490 RPM 380 V 0632M

Typical performance - not guaranteed values.

TORQUES (LB-FT): PO=26.5 PU=19.7 LR=23.7 LRA=51.9



7/8/2026 ACPERF, record # 51599



CD0005



LOW VOLTAGE
(2Y)



LINE

HIGH VOLTAGE
(1Y)



LINE

NOTES:

1. INTERCHANGE ANY TWO LINE LEADS TO REVERSE ROTATION.
2. OPTIONAL THERMOSTATS ARE PROVIDED WHEN SPECIFIED.
3. ACTUAL NUMBER OF INTERNAL PARALLEL CIRCUITS MAY BE A MULTIPLE OF THOSE SHOWN ABOVE.
4. LEAD COLORS ARE OPTIONAL. LEADS MUST ALWAYS BE NUMBERED AS SHOWN.

CD0005

REV. DESC: REVISE TO SHOW OPTIONAL COLORS

REV. LTR: E BY: JLP REVISED: 01/19/99 10:15 TDR: 0171435

500000

FILE: AAA00005140

MDL: -

MTL: -

BALDOR ELECTRIC Co.

3PH, DV, 9 LEADS