

ABB BALDOR RELIANCE III

Customer information packet

VFSWDM3651-E

3HP, 1760RPM, 3PH, 60HZ, 56C, TEFC, F1

Class - None

Division - Not Applicable

Specifications

Enclosure	TEFC
Frame	56C
Frame Material	Stainless Steel
Frequency	60.00 Hz
Haz Area Class and Group	None
Haz Area Division	Not Applicable
Motor Letter Type	Three Phase
Output @ Frequency	3.000 HP @ 60 HZ
Phase	3
Synchronous Speed @ Frequency	1800 RPM @ 60 HZ
Voltage @ Frequency	230.0 V @ 60 HZ 460.0 V @ 60 HZ
Agency Approvals	CSA UR NEMA PREMIUM
Ambient Temperature	40 °C
Auxiliary Box	NO AUXILLARY BOX
Auxiliary Box Lead Termination	None
Base Indicator	No Mounting
Bearing Grease Type	Polyrex EM (-20F +300F)
Blower	None
Current @ Voltage	8.400 A @ 230.0 V 4.200 A @ 460.0 V
Design Code	B
Drip Cover	No Drip Cover
Duty Rating	CONT
Efficiency @ 100% Load	89.5 %
Electrically Isolated Bearing	Not Electrically Isolated
Feedback Device	NO FEEDBACK
Heater Indicator	No Heater
High Voltage Full Load Amps	4.2 a
Insulation Class	H

Part Detail

Revision	F
Type	AC
Mech. spec.	
Base	
Status	PRD/A
Elec. spec.	36WGS987
Layout	36LY-000-048
Eff. date	01-16-2026
CD Diagram	CD0005
Poles	04
Leads	9#16
Proprietary	False
Created date	05-23-2019

Inverter Code	Inverter Ready
KVA Code	K
Lifting Lugs	Standard Lifting Lugs
Locked Bearing Indicator	Locked Bearing
Motor Lead Termination	Flying Leads
Motor Standards	NEMA
Motor Type	3636M
Mounting Arrangement	F1
Number of Poles	4
Overall Length	17.54 IN
Power Factor	76
Product Family	WD All SS Encapsulated
Pulley Face Code	C-Face
Rodent Screen	None
Service Factor	1.15
Shaft Diameter	0.625 IN
Shaft Ground Indicator	No Shaft Grounding
Shaft Rotation	Reversible
Speed	1760 rpm
Speed Code	Single Speed
Starting Method	Direct on line
Thermal Device - Bearing	None
Thermal Device - Winding	None
Vibration Sensor Indicator	No Vibration Sensor
Winding Thermal 1	None
Winding Thermal 2	None

Nameplate

NP1953N01									
CAT.NO.	VFSWDM3651-E								
SPEC.	36-0000-0049								
HP	3								
VOLTS	230/460								
AMPS	8.4/4.2								
R.P.M.	1760								
FRAME	56C	HZ	60	PH	3				
SER.F.	1.15	CODE	K	DES.	B	CLASS	H		
NEMA NOM. EFF.	89.5	P.F.	76						
RATING	40C AMB-CONT								
CC	010A	USABLE AT 208V	N/A						
DE	6207	ODE	6206						
ENCL	TEFC	SN							
	4:1 CT, 10:1 VT								

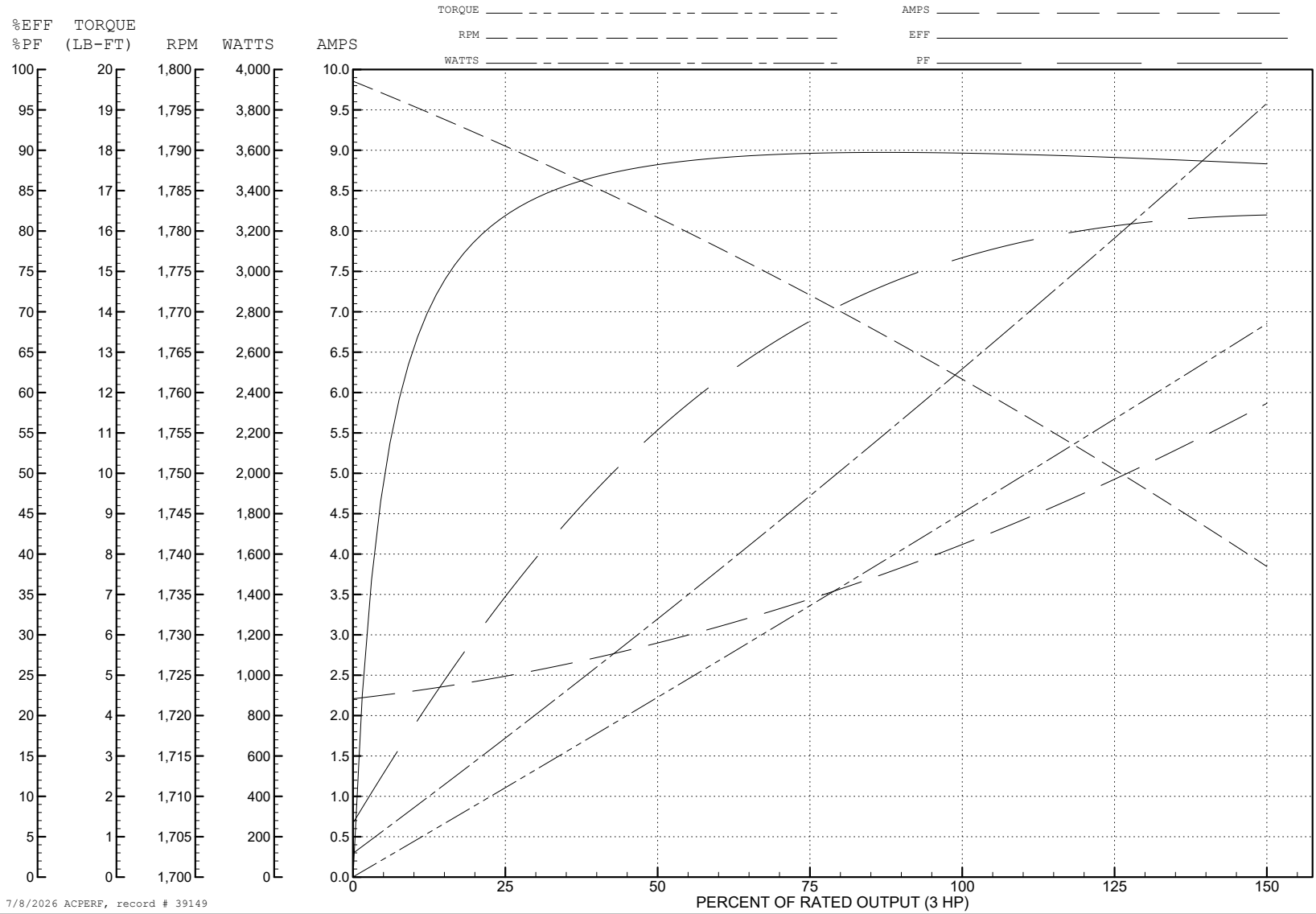
ABB Motors and Mechanical Inc.

WINDING # 36WGS987

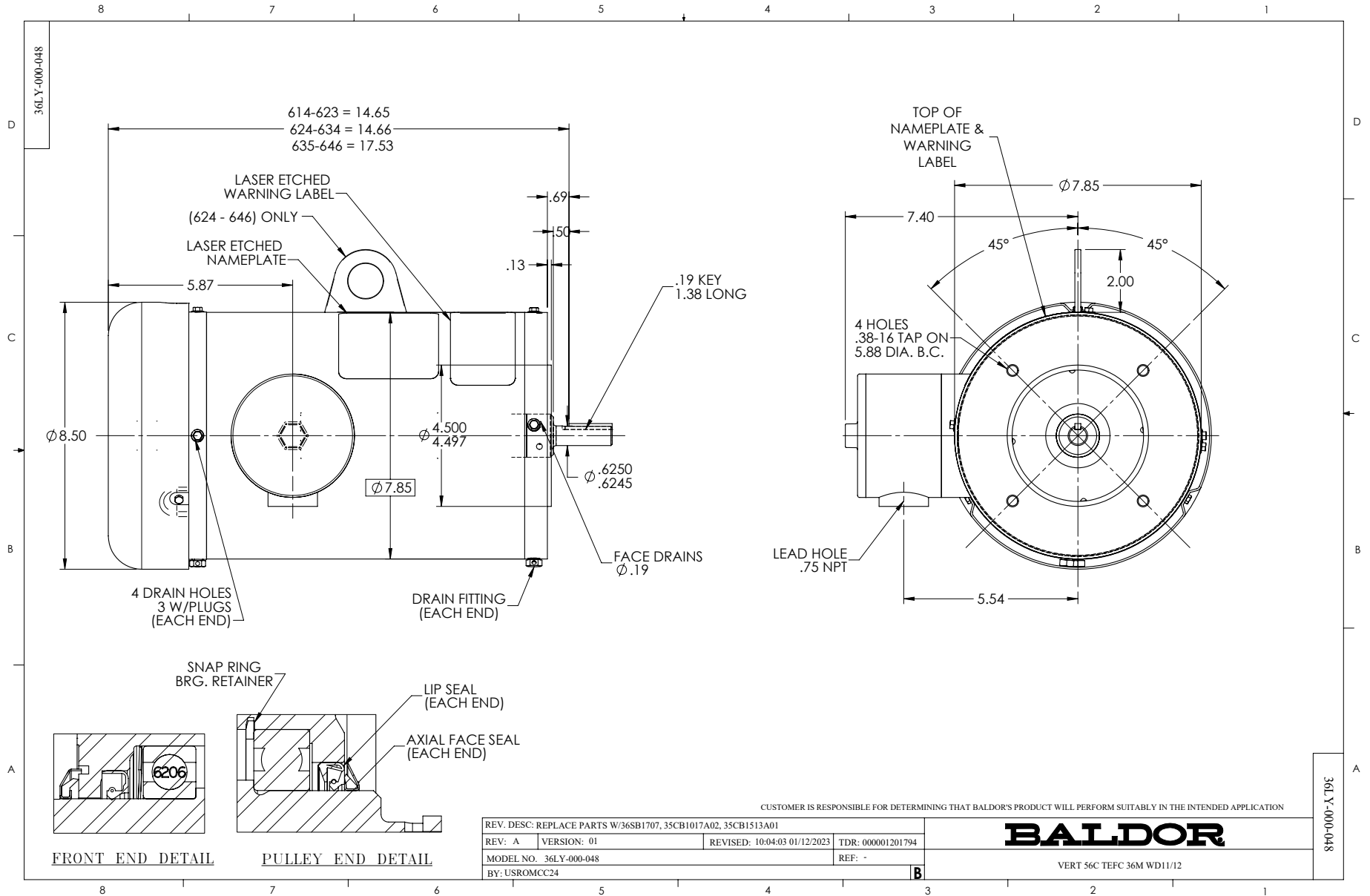
3 HP 3 PH 60 HZ 1760 RPM 460 V 3636M

Typical performance - not guaranteed values.

TORQUES (LB-FT): PO=34.81 PU=18.62 LR=21.9 LRA=34.1



7/8/2026 ACPERF, record # 39149



CD0005



LOW VOLTAGE
(2Y)



LINE

HIGH VOLTAGE
(1Y)



LINE

NOTES:

1. INTERCHANGE ANY TWO LINE LEADS TO REVERSE ROTATION.
2. OPTIONAL THERMOSTATS ARE PROVIDED WHEN SPECIFIED.
3. ACTUAL NUMBER OF INTERNAL PARALLEL CIRCUITS MAY BE A MULTIPLE OF THOSE SHOWN ABOVE.
4. LEAD COLORS ARE OPTIONAL. LEADS MUST ALWAYS BE NUMBERED AS SHOWN.

CD0005

REV. DESC: REVISE TO SHOW OPTIONAL COLORS

REV. LTR: E BY: JLP REVISED: 01/19/99 10:15 TDR: 0171435

500000

FILE: AAA00005140

MDL: -

MTL: -

BALDOR ELECTRIC Co.

3PH, DV, 9 LEADS