

ABB BALDOR RELIANCE III

Customer information packet

VFSWDM3615T-E

5HP, 1750RPM, 3PH, 60HZ, 184TC, 3646M, TEFC, F1

Class - None

Division - Not Applicable

Specifications

| | |
|---------------------------------------|---|
| Enclosure | TEFC |
| Frame | 184TC |
| Frame Material | Stainless Steel |
| Frequency | 60.00 Hz |
| Haz Area Class and Group | None |
| Haz Area Division | Not Applicable |
| Motor Letter Type | Three Phase |
| Output @ Frequency | 5.000 HP @ 60 HZ |
| Phase | 3 |
| Synchronous Speed @ Frequency | 1800 RPM @ 60 HZ |
| Voltage @ Frequency | 460.0 V @ 60 HZ 230.0 V @ 60 HZ |
| Agency Approvals | CSA NEMA PREMIUM UR |
| Ambient Temperature | 40 °C |
| Auxiliary Box | NO AUXILLARY BOX |
| Auxiliary Box Lead Termination | None |
| Base Indicator | No Mounting |
| Bearing Grease Type | Polyrex EM (-20F +300F) |
| Blower | None |
| Current @ Voltage | 13.800 A @ 208.0 V 6.500 A @ 460.0 V 13.000 A @ 230.0 V |
| Design Code | B |
| Drip Cover | No Drip Cover |
| Duty Rating | CONT |
| Efficiency @ 100% Load | 89.5 % |
| Electrically Isolated Bearing | Not Electrically Isolated |
| Feedback Device | NO FEEDBACK |
| Front Face Code | Standard |
| Front Shaft Indicator | None |

Part Detail

| | |
|---------------------|------------|
| Revision | P |
| Type | AC |
| Mech. spec. | 36R533 |
| Base | |
| Status | PRD/A |
| Elec. spec. | 36WGS953 |
| Layout | 36LYR533 |
| Eff. date | 10-06-2025 |
| CD Diagram | CD0005 |
| Poles | 04 |
| Leads | 9#16 |
| Proprietary | False |
| Created date | 07-11-2017 |

| | |
|--------------------------------------|------------------------|
| Heater Indicator | No Heater |
| High Voltage Full Load Amps | 6.5 a |
| Insulation Class | H |
| Inverter Code | Inverter Ready |
| KVA Code | J |
| Lifting Lugs | Standard Lifting Lugs |
| Locked Bearing Indicator | Locked Bearing |
| Motor Lead Exit | Ko Box |
| Motor Lead Quantity/Wire Size | 9 @ 16 AWG |
| Motor Lead Termination | Flying Leads |
| Motor Standards | NEMA |
| Motor Type | 3646M |
| Mounting Arrangement | F1 |
| Number of Poles | 4 |
| Overall Length | 18.89 IN |
| Power Factor | 81 |
| Product Family | WD All SS Encapsulated |
| Pulley End Bearing Type | Sealed Bearing |
| Pulley Face Code | C-Face |
| Pulley Shaft Indicator | Standard |
| Rodent Screen | None |
| RoHS Status | ROHS COMPLIANT |
| Service Factor | 1.15 |
| Shaft Diameter | 1.125 IN |
| Shaft Extension Location | Pulley End |
| Shaft Ground Indicator | No Shaft Grounding |
| Shaft Rotation | Reversible |
| Shaft Slinger Indicator | Shaft Slinger |
| Speed | 1750 rpm |
| Speed Code | Single Speed |
| Starting Method | Direct on line |
| Thermal Device - Bearing | None |
| Thermal Device - Winding | None |
| Vibration Sensor Indicator | No Vibration Sensor |

Winding Thermal 1

None

Winding Thermal 2

None

Nameplate

| NP4427AAA01 | | | | | | | | | | | |
|--------------------|----------------------|----------------|-------------|-------------|----------------------|--------------|------------|----|-------|--|--|
| CAT # | VFSWDM3615T-E | | | | WT | 101 | LBS | | | | |
| SPEC | 36R533S953G1 | | | | ENCL | TEFC | | | | | |
| SER # | | | | | CC | 010A | IP | 69 | | | |
| HP | 5 | MAG CUR | | 5.8/2.9 | | | | | | | |
| VOLTS | 230/460 | | | | NEMA NOM. EFF | | 89.5 | | | | |
| AMPS | 13/6.5 | | | | PF | 81 | | | | | |
| RATING | 40C AMB-CONT | | | | | | | | | | |
| RPM | 1750 | | | | MAX RPM | | 2700 | | | | |
| FRAME | 184TC | HZ | 60 | CODE | J | CLASS | H | | | | |
| SER.F. | 1.15 | SF AMP | 14.8/7.4 | | PH | 3 | DES | B | | | |
| DE | 6206 | | ODE | 6206 | | | | | | | |
| LUBRICATION | POLYREX EM | | | | | | | | | | |
| ID LOGO | INVERTER TYPE | | VPWM | | CHP | 60 | TO | 90 | 1.5:1 | | |
| ID LOGO | WK2 | 0.428 | CT | 15 | TO | 60 | 4:1 | | | | |
| ID LOGO | SL HZ | 1.7 | VT | 6 | TO | 60 | 10:1 | | | | |
| | | | | | | | | | | | |
| | | | | | | | | | | | |
| | | | | | | | | | | | |
| YR | | | | | QR | | | | | | |

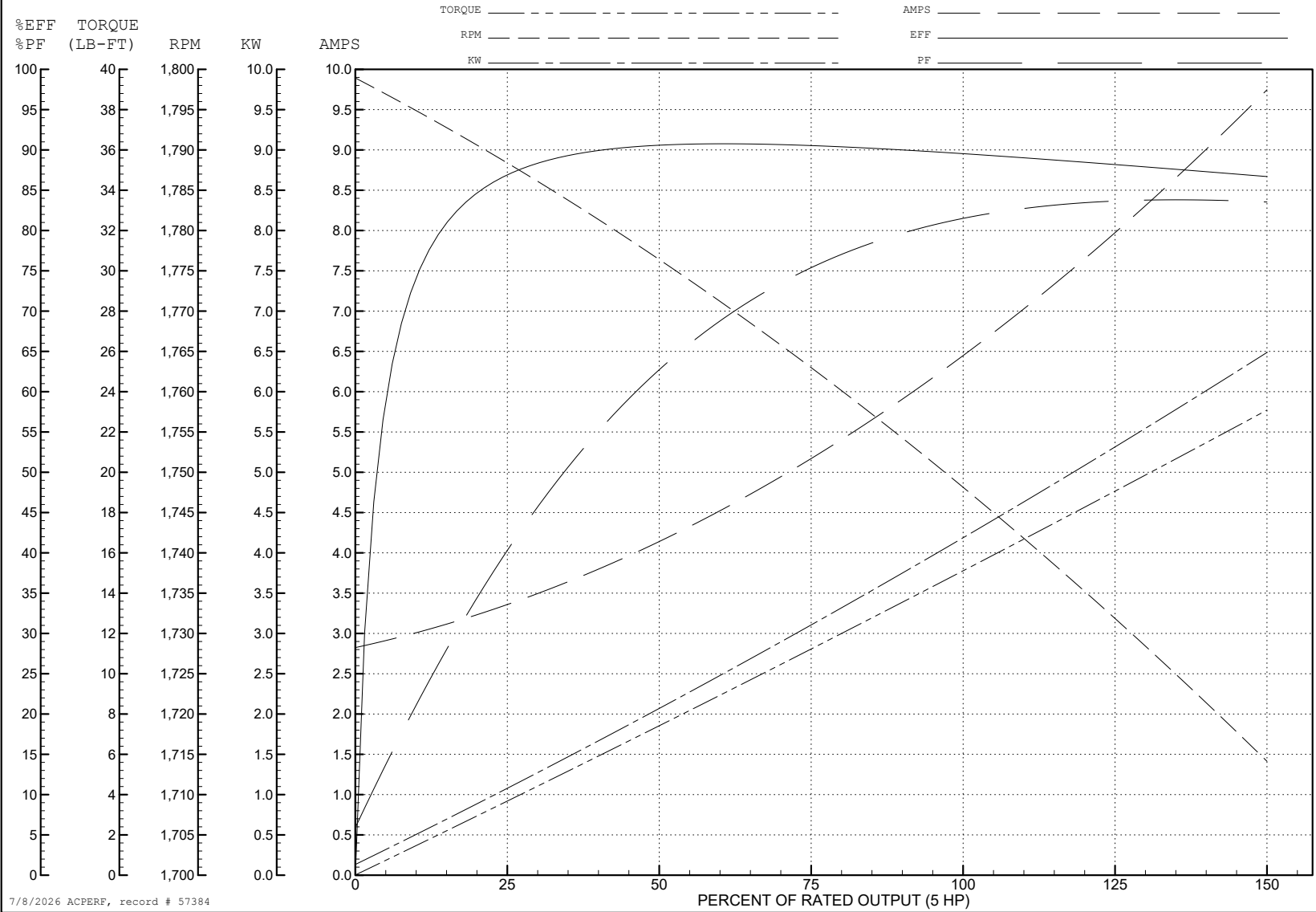
ABB Motors and Mechanical Inc.

WINDING # 36WGS953

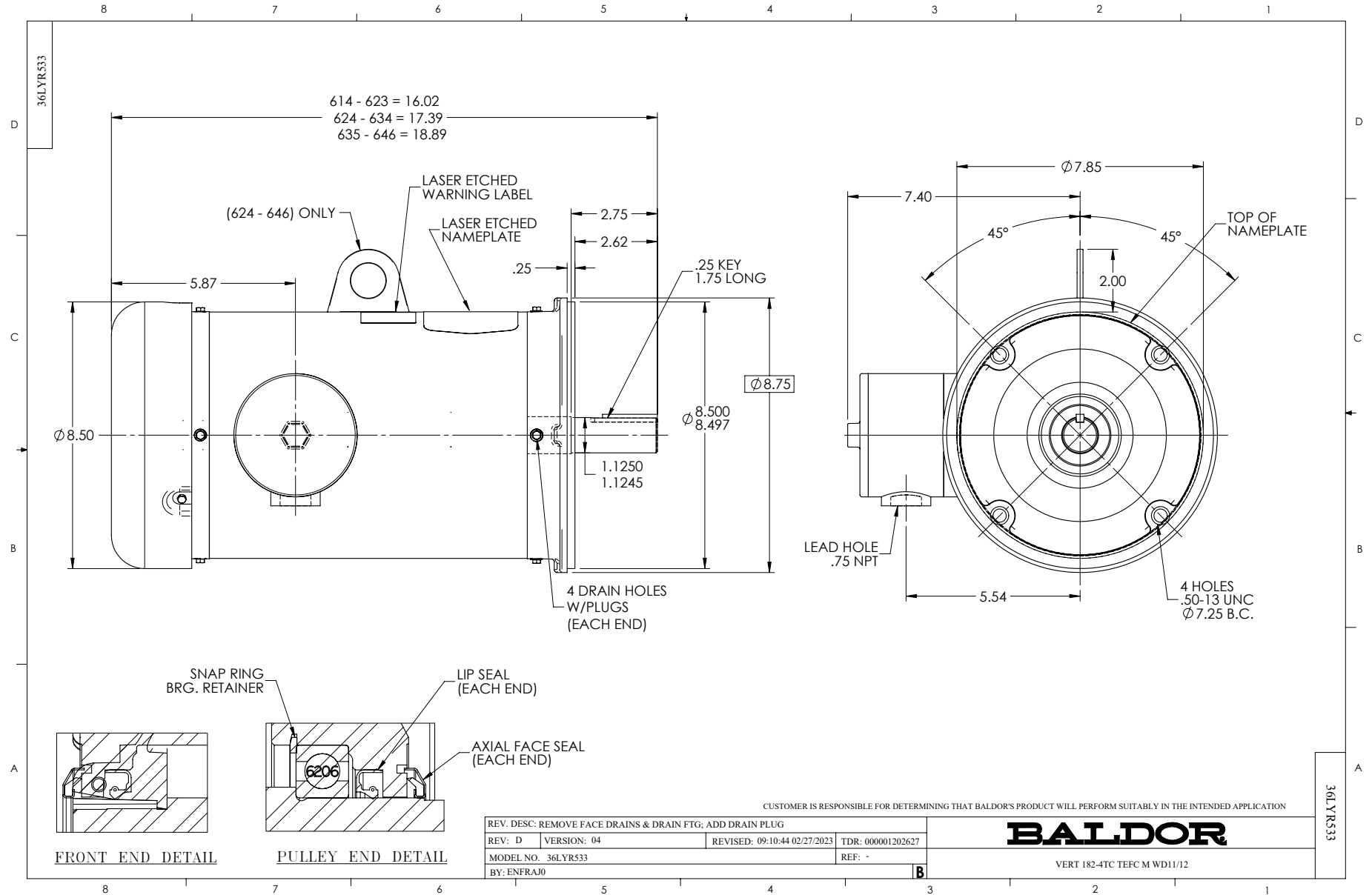
5 HP 3 PH 60 HZ 1750 RPM 460 V 3646M

Typical performance - not guaranteed values.

TORQUES (LB-FT): PO=57.4 PU=28.9 LR=32.3 LRA=47.9



7/8/2026 ACPERF, record # 57384



CD0005



LOW VOLTAGE
(2Y)



LINE

HIGH VOLTAGE
(1Y)



LINE

NOTES:

1. INTERCHANGE ANY TWO LINE LEADS TO REVERSE ROTATION.
2. OPTIONAL THERMOSTATS ARE PROVIDED WHEN SPECIFIED.
3. ACTUAL NUMBER OF INTERNAL PARALLEL CIRCUITS MAY BE A MULTIPLE OF THOSE SHOWN ABOVE.
4. LEAD COLORS ARE OPTIONAL. LEADS MUST ALWAYS BE NUMBERED AS SHOWN.

CD0005

REV. DESC: REVISE TO SHOW OPTIONAL COLORS

REV. LTR: E BY: JLP REVISED: 01/19/99 10:15 TDR: 0171435

500000

FILE: AAA00005140

MDL: -

MTL: -

BALDOR ELECTRIC Co.

3PH, DV, 9 LEADS