

**BALDOR • RELIANCE**

---

# Customer information packet

## VFSWDM3615T-E-G

5HP, 1750RPM, 3PH, 60HZ, 184TC, 3646M, TEFC, F1

Class - None

Division - Not Applicable

Copyright © All product information within this document is subject to ABB Motors and Mechanical Inc. copyright © protection, unless otherwise noted.

5/22/2024 3:23:49 PM

## Specifications

Enclosure	TEFC
Frame	184TC
Frame Material	Stainless Steel
Frequency	60.00 Hz
Motor Letter Type	Three Phase
Output @ Frequency	5.000 HP @ 60 HZ
Phase	3
Synchronous Speed @ Frequency	1800 RPM @ 60 HZ
Voltage @ Frequency	230.0 V @ 60 HZ
	460.0 V @ 60 HZ
XP Class and Group	None
XP Division	Not Applicable
Agency Approvals	CSA EEV
	UR
	NEMA_PREMIUM NEMA PREMIUM
Ambient Temperature	40 °C
Auxillary Box	No Auxillary Box
Auxillary Box Lead Termination	None
Base Indicator	No Mounting
Bearing Grease Type	Polyrex EM (-20F +300F)
Blower	None
Current @ Voltage	13.000 A @ 230.0 V
	13.800 A @ 208.0 V
	6.500 A @ 460.0 V
Design Code	B
Drip Cover	No Drip Cover
Duty Rating	CONT
Efficiency @ 100% Load	89.5 %
Electrically Isolated Bearing	Not Electrically Isolated
Feedback Device	NO FEEDBACK
Heater Indicator	No Heater

## Part detail

Revision	A
Type	AC
Mech. spec.	
Base	
Status	PRD/A
Elec. spec.	36WGS953
Layout	36LY-000-277
Eff. date	02-09-2023
CD Diagram	CD0005
Poles	04
Leads	9#16
Proprietary	False
Created date	10-08-2021

High Voltage Full Load Amps	6.5 a
Insulation Class	H
Inverter Code	Inverter Duty
KVA Code	J
Lifting Lugs	Standard Lifting Lugs
Locked Bearing Indicator	Locked Bearing
Motor Lead Termination	Flying Leads
Motor Standards	NEMA
Motor Type	3646M
Mounting Arrangement	F1
Number of Poles	4
Overall Length	18.89 IN
Power Factor	81
Product Family	WD All SS Encapsulated
Pulley Face Code	C-Face
Rodent Screen	None
Service Factor	1.15
Shaft Diameter	1.125 IN
Shaft Ground Indicator	Shaft Grounding
Shaft Rotation	Reversible
Speed	1750 rpm
Speed Code	Single Speed
Starting Method	Direct on line
Thermal Device - Bearing	None
Thermal Device - Winding	None
Vibration Sensor Indicator	No Vibration Sensor
Winding Thermal 1	None
Winding Thermal 2	None

**Nameplate**

<b>NP4292M01</b>									
<b>CAT.NO.</b>	VFSWDM3615T-E-G								
<b>SPEC.</b>	36-0000-3587								
<b>HP</b>	5								
<b>VOLTS</b>	230/460								
<b>AMPS</b>	13/6.5								
<b>R.P.M.</b>	1750								
<b>FRAME</b>	184TC	<b>HZ</b>	60	<b>PH</b>	3				
<b>SER.F.</b>	1.15	<b>CODE</b>	J	<b>DES.</b>	B	<b>CLASS</b>	H		
<b>NEMA NOM. EFF.</b>	89.5	<b>P.F.</b>	81						
<b>RATING</b>	40C AMB-CONT								
<b>CC</b>	010A	<b>USABLE AT 208V</b>				N/A			
<b>DE</b>	6206	<b>ODE</b>	6206						
<b>ENCL</b>	TEFC	<b>SN</b>							
	4:1CT, 10:1VT IP69								

**AC Induction Motor Performance Data**

Record # 77572

Typical performance - not guaranteed values

<b>Winding: 36WGS953-R003</b>		<b>Type: 3646M</b>		<b>Enclosure: TEFC</b>	
<b>Nameplate Data</b>			<b>460 V, 60 Hz: High Voltage Connection</b>		
<b>Rated Output (HP)</b>	5		<b>Full Load Torque</b>	15.2 LB-FT	
<b>Volts</b>	230/460		<b>Start Configuration</b>	direct on line	
<b>Full Load Amps</b>	13/6.5		<b>Breakdown Torque</b>	49.7 LB-FT	
<b>R.P.M.</b>	1750		<b>Pull-up Torque</b>	27.7 LB-FT	
<b>Hz</b>	<b>60 Phase</b>	3	<b>Locked-rotor Torque</b>	32.3 LB-FT	
<b>NEMA Design Code</b>	<b>B KVA Code</b>	J	<b>Starting Current</b>	48.3 A	
<b>Service Factor (S.F.)</b>	1.15		<b>No-load Current</b>	2.91 A	
<b>NEMA Nom. Eff.</b>	<b>89.5 Power Factor</b>	81	<b>Line-line Res. @ 25°C</b>	2.32 Ω	
<b>Rating - Duty</b>	40C AMB-CONT		<b>Temp. Rise @ Rated Load</b>	87°C	
<b>S.F. Amps</b>			<b>Temp. Rise @ S.F. Load</b>	107°C	
			<b>Locked-rotor Power Factor</b>	39	
			<b>Rotor inertia</b>	0.428 LB-FT <sup>2</sup>	

**Load Characteristics 460 V, 60 Hz, 5 HP**

<b>% of Rated Load</b>	<b>25</b>	<b>50</b>	<b>75</b>	<b>100</b>	<b>125</b>	<b>150</b>	<b>S.F.</b>
<b>Power Factor</b>	42	64	75	81	83	84	82
<b>Efficiency</b>	86.6	90.4	90.7	90	88.4	86.6	89
<b>Speed</b>	1788	1776	1763	1748	1732	1714	1738
<b>Line amperes</b>	3.27	4.1	5.2	6.49	8.02	9.69	7.41

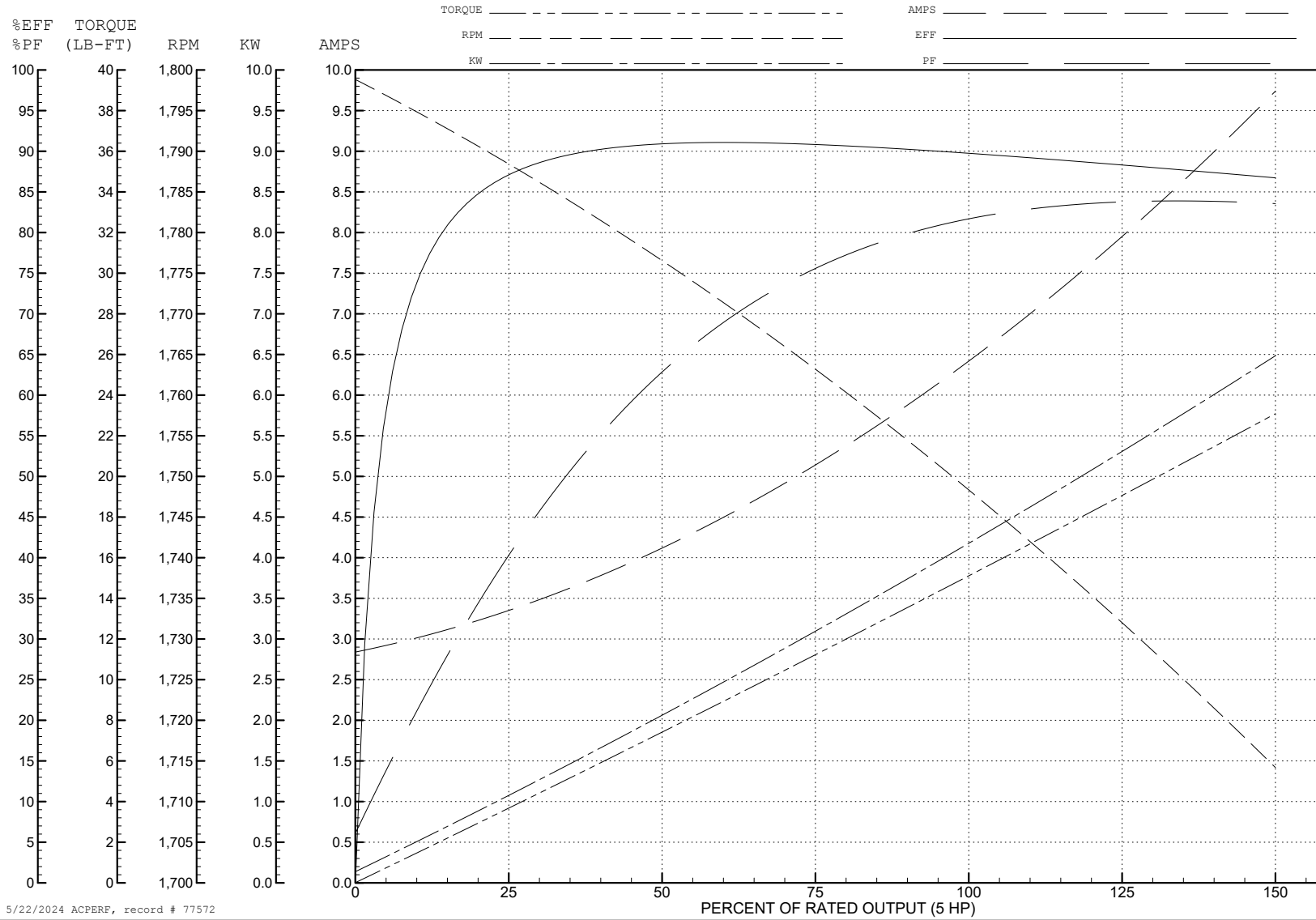
ABB Motors and Mechanical Inc.

WINDING # 36WGS953

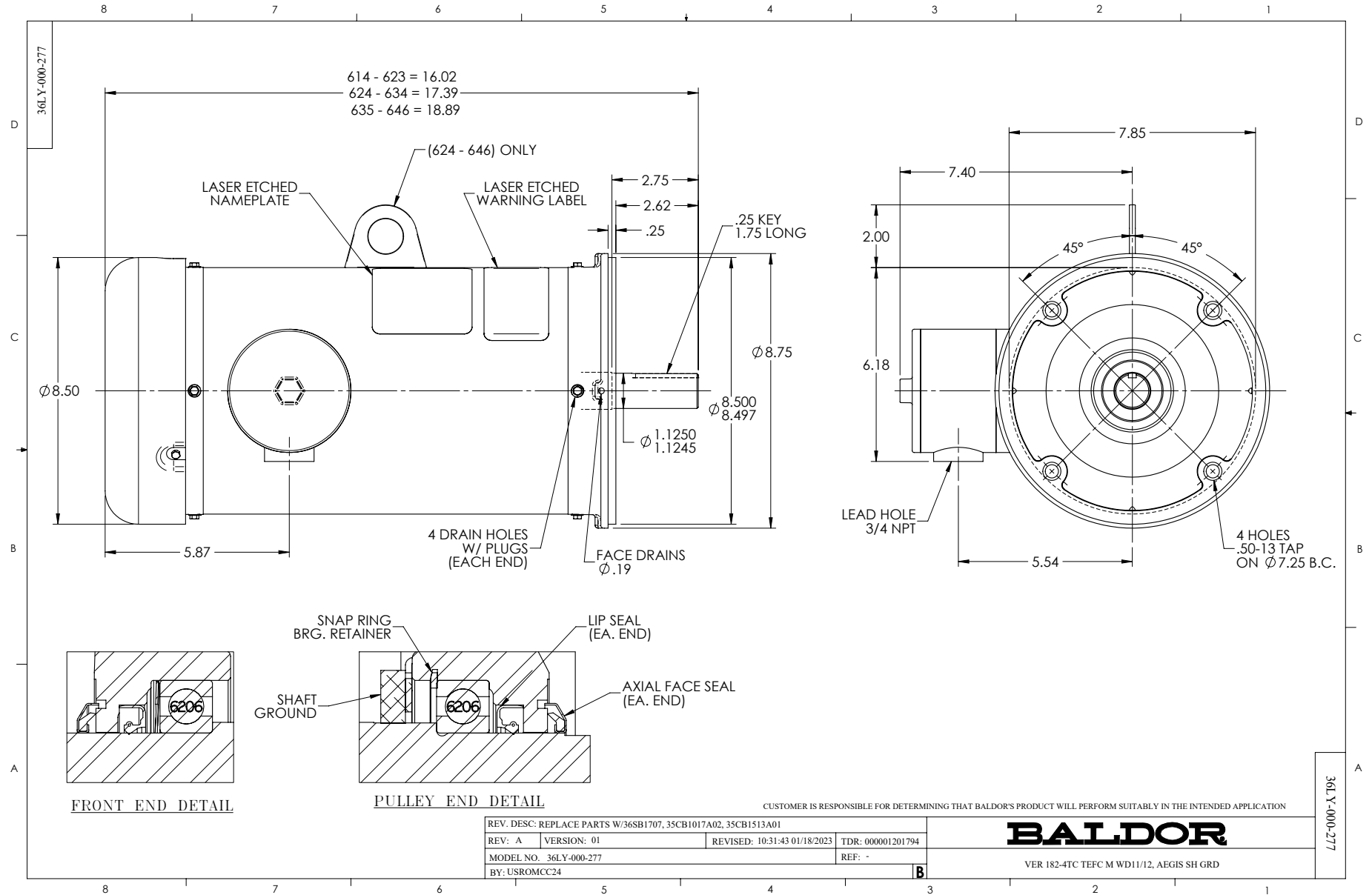
5 HP 3 PH 60 HZ 1750 RPM 460 V 3646M

Typical performance - not guaranteed values.

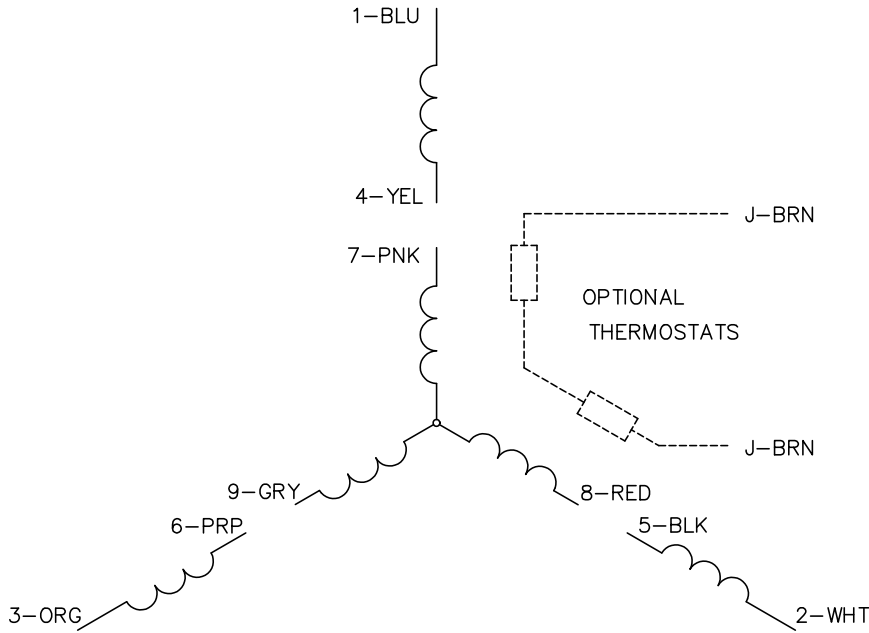
TORQUES (LB-FT): PO=49.7 PU=27.7 LR=32.3 LRA=48.3



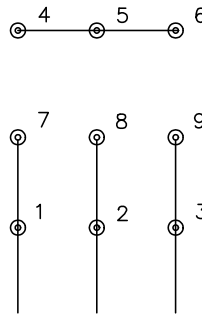
5/22/2024 ACPERF, record # 77572



CD0005

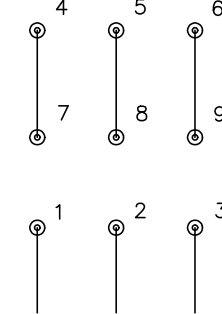


LOW VOLTAGE  
(2Y)



LINE

HIGH VOLTAGE  
(1Y)



LINE

**NOTES:**

1. INTERCHANGE ANY TWO LINE LEADS TO REVERSE ROTATION.
2. OPTIONAL THERMOSTATS ARE PROVIDED WHEN SPECIFIED.
3. ACTUAL NUMBER OF INTERNAL PARALLEL CIRCUITS MAY BE A MULTIPLE OF THOSE SHOWN ABOVE.
4. LEAD COLORS ARE OPTIONAL. LEADS MUST ALWAYS BE NUMBERED AS SHOWN.

CD0005

REV. DESC: REVISE TO SHOW OPTIONAL COLORS			
REV. LTR: E	BY: JLP	REVISED: 01/19/99 10:15	TDR: 0171435
S00000		FILE: AAA00005140	MDL: -
		MTL: -	

**BALDOR ELECTRIC Co.**

3PH, DV, 9 LEADS