

ABB BALDOR RELIANCE III

Customer information packet

VFSWDM3613T-E

5HP, 3500RPM, 3PH, 60HZ, 184TC, 3634M, TEFC, F1

Class - None

Division - Not Applicable

Specifications

Enclosure	TEFC
Frame	184TC
Frame Material	Stainless Steel
Frequency	60.00 Hz
Haz Area Class and Group	None
Haz Area Division	Not Applicable
Motor Letter Type	Three Phase
Output @ Frequency	5.000 HP @ 60 HZ
Phase	3
Synchronous Speed @ Frequency	3600 RPM @ 60 HZ
Voltage @ Frequency	460.0 V @ 60 HZ 230.0 V @ 60 HZ
Agency Approvals	CSA NEMA PREMIUM UR
Ambient Temperature	40 °C
Auxiliary Box	NO AUXILLARY BOX
Auxiliary Box Lead Termination	None
Base Indicator	No Mounting
Bearing Grease Type	Polyrex EM (-20F +300F)
Blower	None
Current @ Voltage	12.000 A @ 208.0 V 5.600 A @ 460.0 V 11.200 A @ 230.0 V
Design Code	B
Drip Cover	No Drip Cover
Duty Rating	CONT
Efficiency @ 100% Load	89.5 %
Electrically Isolated Bearing	Not Electrically Isolated
Feedback Device	NO FEEDBACK
Front Shaft Indicator	None
Heater Indicator	No Heater

Part Detail

Revision	R
Type	AC
Mech. spec.	36R533
Base	
Status	PRD/A
Elec. spec.	36WGT149
Layout	36LYR533
Eff. date	11-12-2025
CD Diagram	CD0005
Poles	02
Leads	9#16
Proprietary	False
Created date	07-07-2017

High Voltage Full Load Amps	5.6 a
Insulation Class	H
Inverter Code	Inverter Ready
KVA Code	L
Lifting Lugs	Standard Lifting Lugs
Locked Bearing Indicator	Locked Bearing
Motor Lead Quantity/Wire Size	9 @ 16 AWG
Motor Lead Termination	Flying Leads
Motor Standards	NEMA
Motor Type	3634M
Mounting Arrangement	F1
Number of Poles	2
Overall Length	17.39 IN
Power Factor	95
Product Family	WD All SS Encapsulated
Pulley End Bearing Type	Sealed Bearing
Pulley Face Code	C-Face
Pulley Shaft Indicator	Standard
Rodent Screen	None
RoHS Status	ROHS COMPLIANT
Service Factor	1.15
Shaft Diameter	1.125 IN
Shaft Ground Indicator	No Shaft Grounding
Shaft Rotation	Reversible
Shaft Slinger Indicator	Shaft Slinger
Speed	3500 rpm
Speed Code	Single Speed
Starting Method	Direct on line
Thermal Device - Bearing	None
Thermal Device - Winding	None
Vibration Sensor Indicator	No Vibration Sensor
Winding Thermal 1	None
Winding Thermal 2	None

Nameplate

NP4427AAA01

CAT #	VFSWDM3613T-E	WT	81	LBS	
SPEC	36R533T149G1	ENCL	TEFC		
SER #		CC	010A	IP	69
HP	5	MAG CUR	3.4/1.7		
VOLTS	230/460	NEMA NOM. EFF		89.5	
AMPS	11.2/5.6	PF	95		
RATING	40C AMB-CONT				
RPM	3500	MAX RPM	5400		
FRAME	184TC	HZ	60	CODE	L
		CLASS	H		
SER.F.	1.15	SF AMP	12.8/6.4	PH	3
		DES	B		
DE	6206	ODE	6206		
LUBRICATION	POLYREX EM				
ID LOGO	INVERTER TYPE	VPWM	60	TO	90
					1.5:1
ID LOGO	WK2	0.15	CT	15	TO
					60
ID LOGO	SL HZ	1.7	VT	0-	TO
					60
					1000:1
YR		QR			

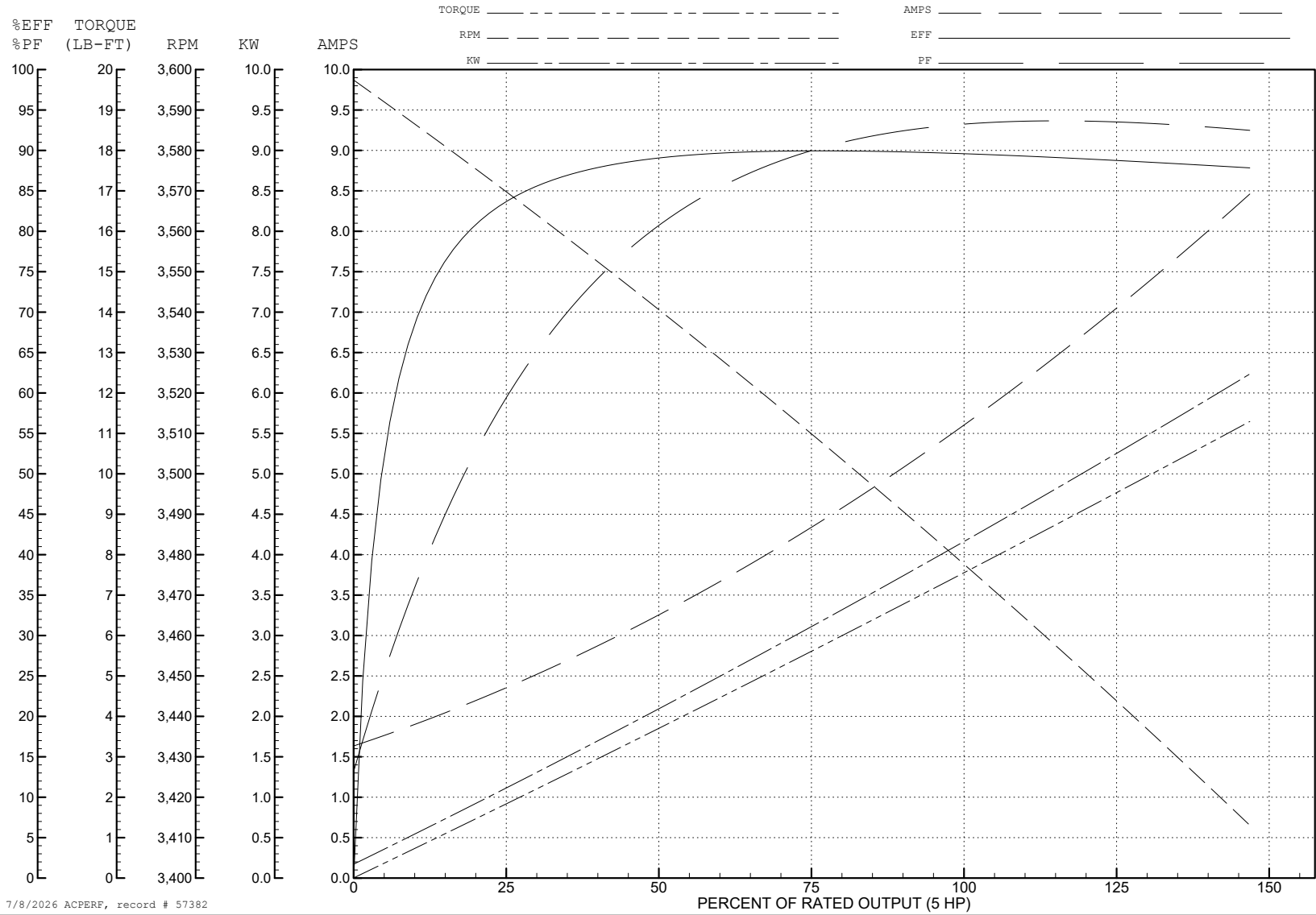
ABB Motors and Mechanical Inc.

WINDING # 36WGT149

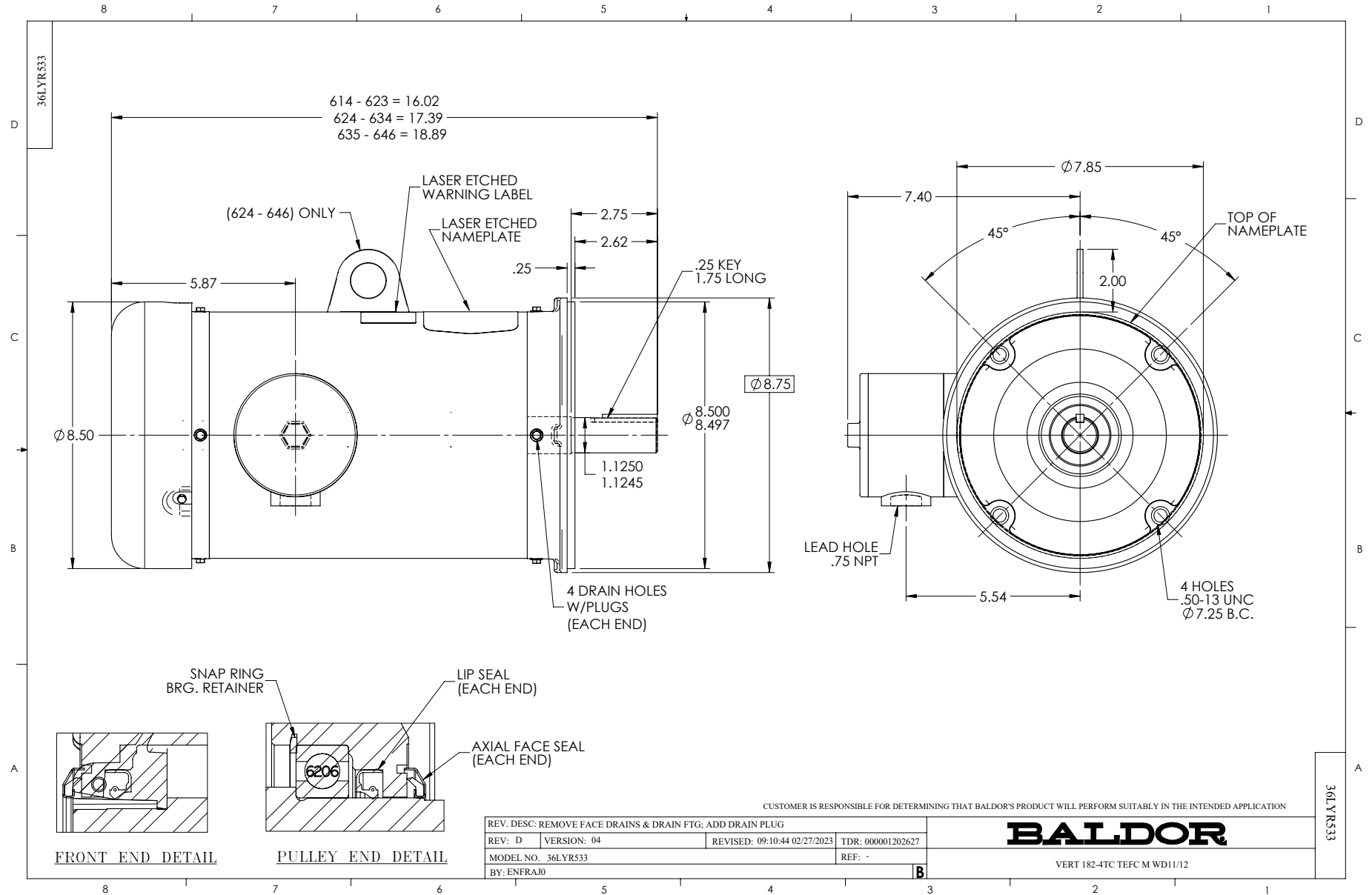
Typical performance - not guaranteed values.

5 HP 3 PH 60 HZ 3500 RPM 460 V 3634M

TORQUES (LB-FT) : PO=39 PU=28 LR=31 LRA=62.5



7/8/2026 ACPERF, record # 57382



CD0005



LOW VOLTAGE
(2Y)



LINE

HIGH VOLTAGE
(1Y)



LINE

NOTES:

1. INTERCHANGE ANY TWO LINE LEADS TO REVERSE ROTATION.
2. OPTIONAL THERMOSTATS ARE PROVIDED WHEN SPECIFIED.
3. ACTUAL NUMBER OF INTERNAL PARALLEL CIRCUITS MAY BE A MULTIPLE OF THOSE SHOWN ABOVE.
4. LEAD COLORS ARE OPTIONAL. LEADS MUST ALWAYS BE NUMBERED AS SHOWN.

CD0005

REV. DESC: REVISE TO SHOW OPTIONAL COLORS

REV. LTR: E BY: JLP REVISED: 01/19/99 10:15 TDR: 0171435

500000

FILE: AAA00005140

MDL: -

MTL: -

BALDOR ELECTRIC Co.

3PH, DV, 9 LEADS