

# ABB BALDOR RELIANCE III

---

## Customer information packet

VFSWDM3559T-E

3HP, 3470RPM, 3PH, 60HZ, 145TC, 3546M, TEFC, F1

Class - None

Division - Not Applicable

**Specifications**

|                                       |                                                             |
|---------------------------------------|-------------------------------------------------------------|
| <b>Enclosure</b>                      | TEFC                                                        |
| <b>Frame</b>                          | 145TC                                                       |
| <b>Frame Material</b>                 | Stainless Steel                                             |
| <b>Frequency</b>                      | 60.00 Hz                                                    |
| <b>Haz Area Class and Group</b>       | None                                                        |
| <b>Haz Area Division</b>              | Not Applicable                                              |
| <b>Motor Letter Type</b>              | Three Phase                                                 |
| <b>Output @ Frequency</b>             | 3.000 HP @ 60 HZ                                            |
| <b>Phase</b>                          | 3                                                           |
| <b>Synchronous Speed @ Frequency</b>  | 3600 RPM @ 60 HZ                                            |
| <b>Voltage @ Frequency</b>            | 230.0 V @ 60 HZ<br>460.0 V @ 60 HZ                          |
| <b>Agency Approvals</b>               | CSA<br>UR                                                   |
| <b>Ambient Temperature</b>            | 40 °C                                                       |
| <b>Auxiliary Box</b>                  | NO AUXILLARY BOX                                            |
| <b>Auxiliary Box Lead Termination</b> | None                                                        |
| <b>Base Indicator</b>                 | No Mounting                                                 |
| <b>Bearing Grease Type</b>            | Polyrex EM (-20F +300F)                                     |
| <b>Blower</b>                         | None                                                        |
| <b>Current @ Voltage</b>              | 7.700 A @ 208.0 V<br>7.400 A @ 230.0 V<br>3.700 A @ 460.0 V |
| <b>Design Code</b>                    | A                                                           |
| <b>Drip Cover</b>                     | No Drip Cover                                               |
| <b>Duty Rating</b>                    | CONT                                                        |
| <b>Efficiency @ 100% Load</b>         | 86.5 %                                                      |
| <b>Electrically Isolated Bearing</b>  | Not Electrically Isolated                                   |
| <b>Feedback Device</b>                | NO FEEDBACK                                                 |
| <b>Front Shaft Indicator</b>          | None                                                        |
| <b>Heater Indicator</b>               | No Heater                                                   |
| <b>High Voltage Full Load Amps</b>    | 3.7 a                                                       |

**Part Detail**

|                     |                 |
|---------------------|-----------------|
| <b>Revision</b>     | M               |
| <b>Type</b>         | AC              |
| <b>Mech. spec.</b>  | 35E4709         |
| <b>Base</b>         |                 |
| <b>Status</b>       | PRD/A           |
| <b>Elec. spec.</b>  | 35WGR930        |
| <b>Layout</b>       | 35LYE4709       |
| <b>Eff. date</b>    | 08-14-2023      |
| <b>CD Diagram</b>   | CD0005          |
| <b>Poles</b>        | 02              |
| <b>Leads</b>        | 9#18,0#,0#,0# Y |
| <b>Proprietary</b>  | False           |
| <b>Created date</b> | 07-11-2017      |

|                                      |                        |
|--------------------------------------|------------------------|
| <b>Insulation Class</b>              | H                      |
| <b>Inverter Code</b>                 | Inverter Ready         |
| <b>KVA Code</b>                      | P                      |
| <b>Lifting Lugs</b>                  | No Lifting Lugs        |
| <b>Locked Bearing Indicator</b>      | Locked Bearing         |
| <b>Motor Finish</b>                  | UNPAINTED              |
| <b>Motor Lead Quantity/Wire Size</b> | @ 0 AWG<br>9 @ 18 AWG  |
| <b>Motor Lead Termination</b>        | Flying Leads           |
| <b>Motor Standards</b>               | NEMA                   |
| <b>Motor Type</b>                    | 3546M                  |
| <b>Mounting Arrangement</b>          | F1                     |
| <b>Number of Poles</b>               | 2                      |
| <b>Overall Length</b>                | 16.28 IN               |
| <b>Power Factor</b>                  | 91                     |
| <b>Product Family</b>                | WD All SS Encapsulated |
| <b>Pulley End Bearing Type</b>       | Sealed Bearing         |
| <b>Pulley Face Code</b>              | C-Face                 |
| <b>Pulley Shaft Indicator</b>        | Standard               |
| <b>Rodent Screen</b>                 | None                   |
| <b>RoHS Status</b>                   | ROHS COMPLIANT         |
| <b>Service Factor</b>                | 1.15                   |
| <b>Shaft Diameter</b>                | 0.875 IN               |
| <b>Shaft Ground Indicator</b>        | No Shaft Grounding     |
| <b>Shaft Rotation</b>                | Reversible             |
| <b>Shaft Slinger Indicator</b>       | No Slinger             |
| <b>Speed</b>                         | 3470 rpm               |
| <b>Speed Code</b>                    | Single Speed           |
| <b>Starting Method</b>               | Direct on line         |
| <b>Thermal Device - Bearing</b>      | None                   |
| <b>Thermal Device - Winding</b>      | None                   |
| <b>Vibration Sensor Indicator</b>    | No Vibration Sensor    |
| <b>Winding Thermal 1</b>             | None                   |
| <b>Winding Thermal 2</b>             | None                   |



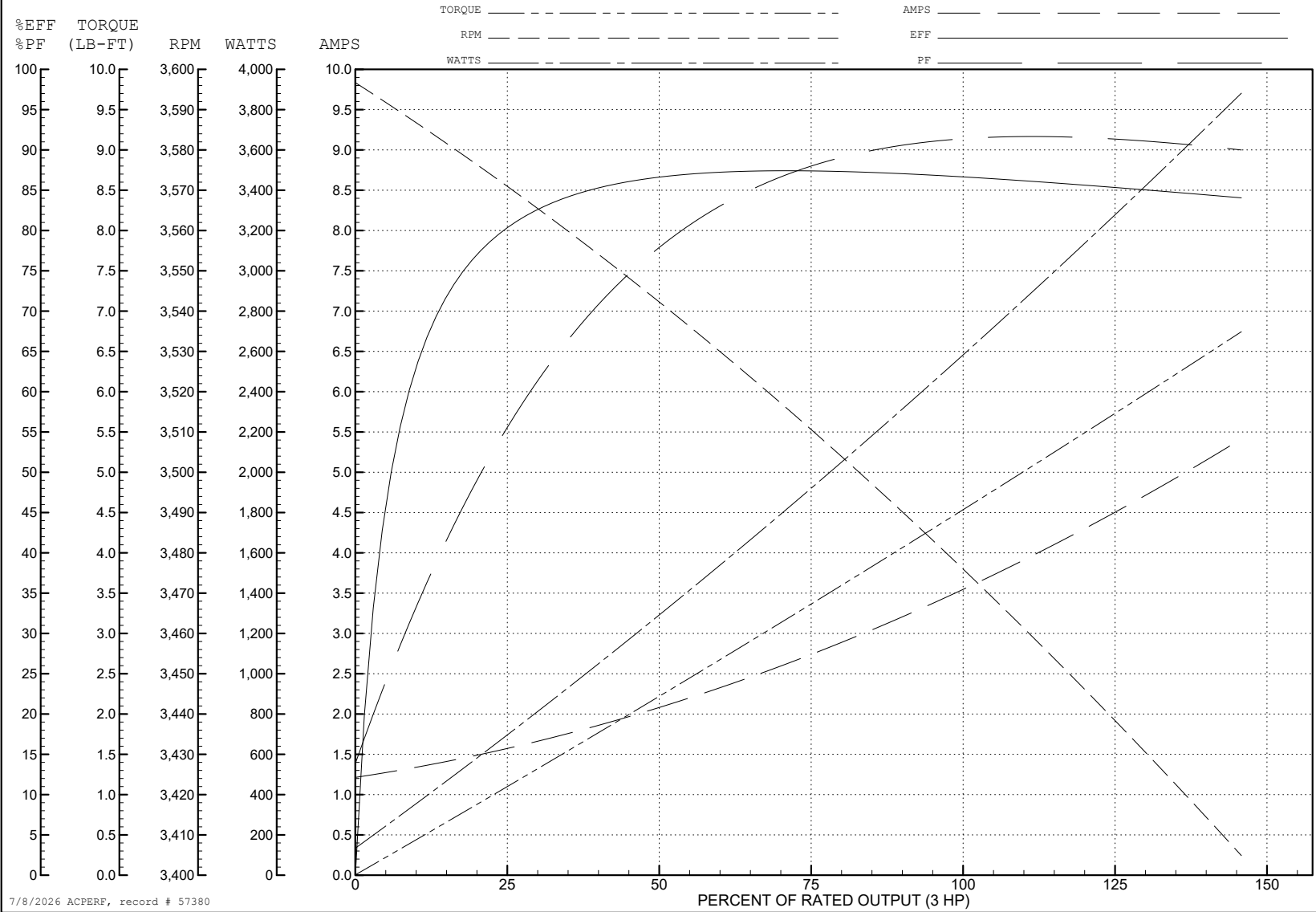
ABB Motors and Mechanical Inc.

WINDING # 35WGR930

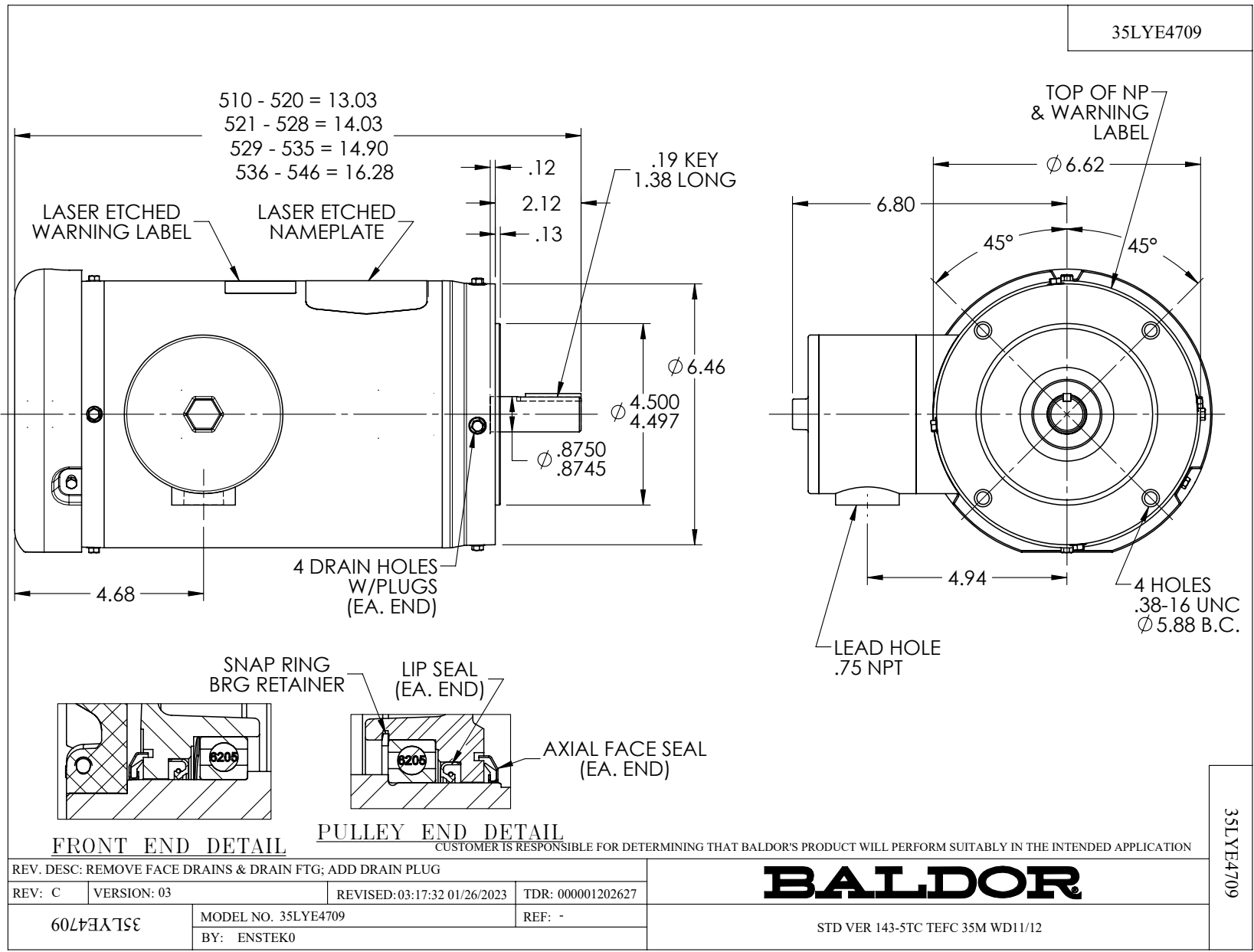
3 HP 3 PH 60 HZ 3470 RPM 460 V 3546M

Typical performance - not guaranteed values.

TORQUES (LB-FT): PO=17.2 PU=10.5 LR=17 LRA=48.3



7/8/2026 ACPERF, record # 57380



CD0005



LOW VOLTAGE  
(2Y)



LINE

HIGH VOLTAGE  
(1Y)



LINE

**NOTES:**

1. INTERCHANGE ANY TWO LINE LEADS TO REVERSE ROTATION.
2. OPTIONAL THERMOSTATS ARE PROVIDED WHEN SPECIFIED.
3. ACTUAL NUMBER OF INTERNAL PARALLEL CIRCUITS MAY BE A MULTIPLE OF THOSE SHOWN ABOVE.
4. LEAD COLORS ARE OPTIONAL. LEADS MUST ALWAYS BE NUMBERED AS SHOWN.

CD0005

REV. DESC: REVISE TO SHOW OPTIONAL COLORS

REV. LTR: E BY: JLP REVISED: 01/19/99 10:15 TDR: 0171435

500000

FILE: AAA00005140

MDL: -

MTL: -

**BALDOR ELECTRIC Co.**

3PH, DV, 9 LEADS