

BALDOR • RELIANCE

Customer information packet

VFSWDM3542-E

.75HP, 1765RPM, 3PH, 60HZ, 56C, 3514M, TENV, F1

Class - None

Division - Not Applicable

Copyright © All product information within this document is subject to ABB Motors and Mechanical Inc. copyright © protection, unless otherwise noted.

9/9/2024 6:48:34 AM

Specifications

Enclosure	TENV
Frame	56C
Frame Material	Stainless Steel
Frequency	60.00 Hz
Haz Area Class and Group	None
Haz Area Division	Not Applicable
Motor Letter Type	Three Phase
Output @ Frequency	.750 HP @ 60 HZ
Phase	3
Synchronous Speed @ Frequency	1800 RPM @ 60 HZ
Voltage @ Frequency	208.0 V @ 60 HZ 230.0 V @ 60 HZ 460.0 V @ 60 HZ
Agency Approvals	CSA CURUSEEV NEMA PREMIUM NEMA_PREMIUM WEEE
Ambient Temperature	40 °C
Auxillary Box	No Auxillary Box
Auxillary Box Lead Termination	None
Base Indicator	No Mounting
Bearing Grease Type	Polyrex EM (-20F +300F)
Blower	None
Current @ Voltage	2.400 A @ 230.0 V 2.400 A @ 208.0 V 1.200 A @ 460.0 V
Design Code	B
Drip Cover	No Drip Cover
Duty Rating	CONT
Efficiency @ 100% Load	82.5 %
Electrically Isolated Bearing	Not Electrically Isolated

Part detail

Revision	C
Type	AC
Mech. spec.	35E4656
Base	
Status	PRD/A
Elec. spec.	35WGG426
Layout	35LYE4656
Eff. date	11-08-2023
CD Diagram	CD0005
Poles	04
Leads	9#18 Y
Proprietary	False
Created date	03-11-2022

Feedback Device	NO FEEDBACK
Front Shaft Indicator	None
Heater Indicator	No Heater
High Voltage Full Load Amps	1.2 a
Insulation Class	H
Inverter Code	Inverter Duty
KVA Code	K
Lifting Lugs	No Lifting Lugs
Locked Bearing Indicator	Locked Bearing
Max Speed	2700 rpm
Motor Finish	UNPAINTED
Motor Lead Quantity/Wire Size	9 @ 18 AWG
Motor Lead Termination	Flying Leads
Motor Standards	NEMA
Motor Type	3514M
Mounting Arrangement	F1
Number of Poles	4
Overall Length	11.78 IN
Power Factor	70
Product Family	WD All SS Encapsulated
Pulley End Bearing Type	Sealed Bearing
Pulley Face Code	C-Face
Pulley Shaft Indicator	Standard
Rodent Screen	None
Service Factor	1.15
Shaft Diameter	0.625 IN
Shaft Ground Indicator	No Shaft Grounding
Shaft Rotation	Reversible
Shaft Slinger Indicator	No Slinger
Speed	1765 rpm
Speed Code	Single Speed
Starting Method	Direct on line
Thermal Device - Bearing	None
Thermal Device - Winding	None

Vibration Sensor Indicator	No Vibration Sensor
Winding Thermal 1	None
Winding Thermal 2	None

Nameplate

NP4427AAA01									
CAT #	VFSWDM3542-E			WT	30	LBS			
SPEC	35E4656G426G1			ENCL	TENV				
SER #				CC	010A	IP	69		
HP	.75	MAG CUR	1.4-1.7/.85						
VOLTS	208-230/460			NEMA NOM. EFF	82.5				
AMPS	2.4/1.2			PF	70				
RATING	40C AMB-CONT								
RPM	1765			MAX RPM	2700				
FRAME	56C	HZ	60	CODE	K	CLASS	H		
SER.F.	1.15	SF AMP	2.8-2.6/1.3		PH	3	DES	B	
DE	6205		ODE	6205					
LUBRICATION	POLYREX EM								
ID LOGO	INVERTER TYPE	VPWM	CHP	60	TO	90	1.5:1		
ID LOGO	WK2	0.101	CT	15	TO	60	4:1		
ID LOGO	SL HZ	1.2	VT	3	TO	60	20:1		
				QR					
YR									

AC Induction Motor Performance Data

Record # 91699

Typical performance - not guaranteed values

Winding: 35WGG426-R006		Type: 3514M		Enclosure: TENV	
Nameplate Data			460 V, 60 Hz: High Voltage Connection		
Rated Output (HP)	.75	Full Load Torque	2.24 LB-FT		
Volts	208-230/460	Start Configuration	direct on line		
Full Load Amps	2.4/1.2	Breakdown Torque	8 LB-FT		
R.P.M.	1765	Pull-up Torque	4.4 LB-FT		
Hz	60 Phase	3	Locked-rotor Torque	5.1 LB-FT	
NEMA Design Code	B KVA Code	K	Starting Current	8.4 A	
Service Factor (S.F.)	1.15		No-load Current	0.85 A	
NEMA Nom. Eff.	82.5 Power Factor	70	Line-line Res. @ 25°C	30.3 Ω	
Rating - Duty	40C AMB-CONT		Temp. Rise @ Rated Load	25°C	
S.F. Amps	2.8-2.6/1.3		Temp. Rise @ S.F. Load	30°C	
			Locked-rotor Power Factor	66.8	
			Rotor inertia	0.101 LB-FT ²	

Load Characteristics 460 V, 60 Hz, 0.75 HP

% of Rated Load	25	50	75	100	125	150	S.F.
Power Factor	30	48	61	70	77	81	78
Efficiency	68.4	79.2	82.1	82.9	82.4	81.1	83.1
Speed	1791	1783	1775	1766	1757	1745	1757
Line amperes	0.87	0.95	1.06	1.21	1.4	1.61	1.26

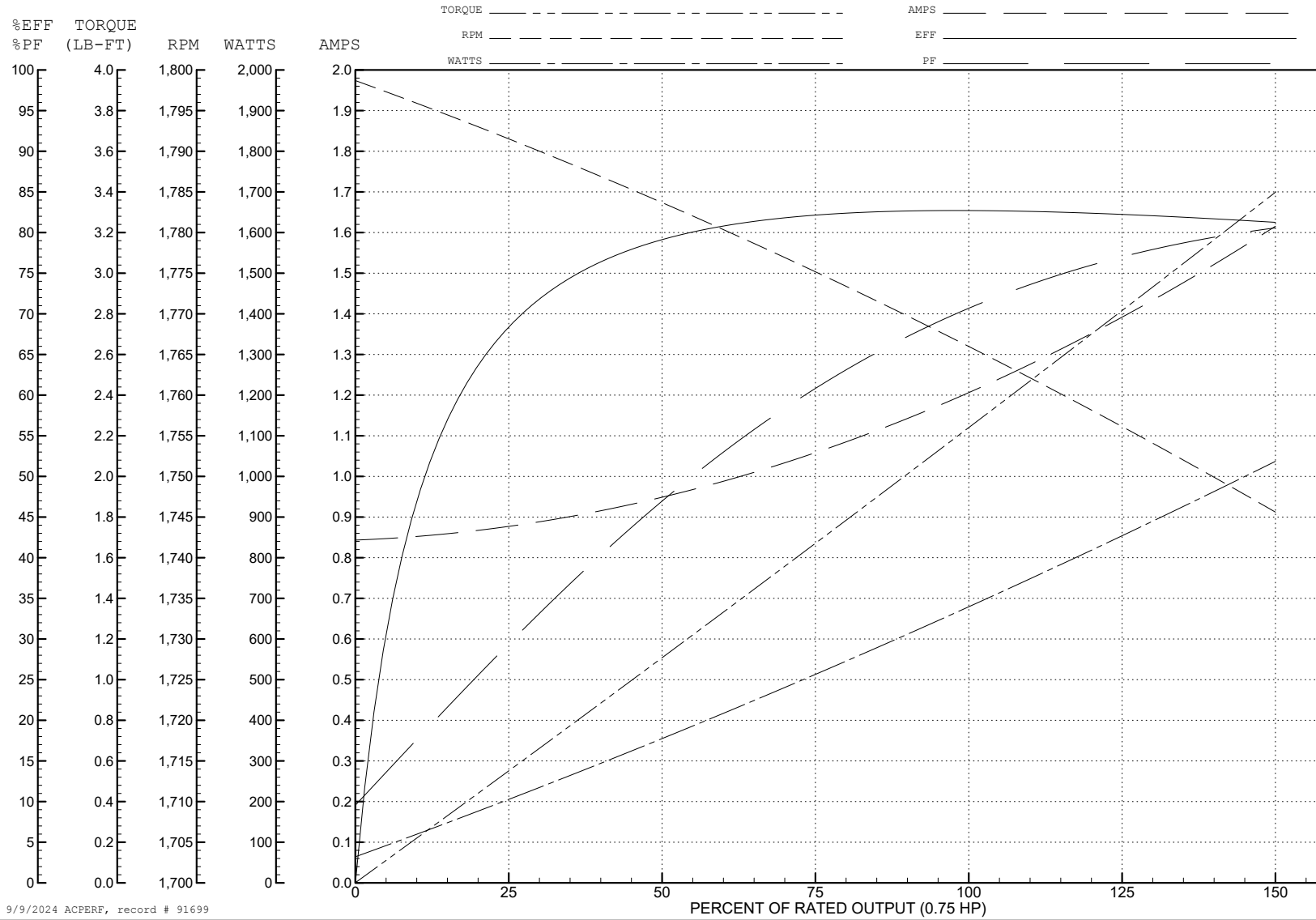
ABB Motors and Mechanical Inc.

WINDING # 35WGG426

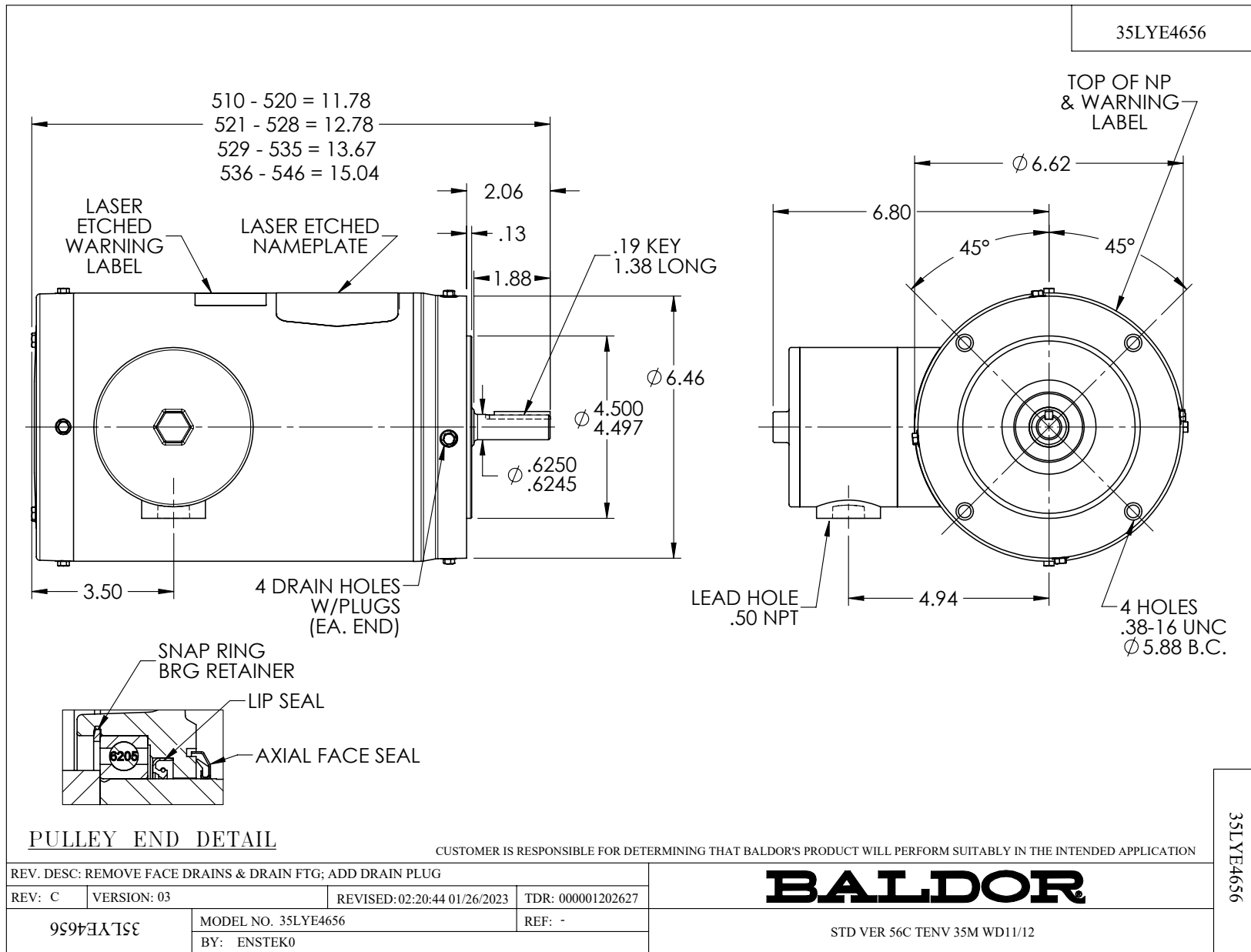
0.75 HP 3 PH 60 HZ 1765 RPM 460 V 3514M

Typical performance - not guaranteed values.

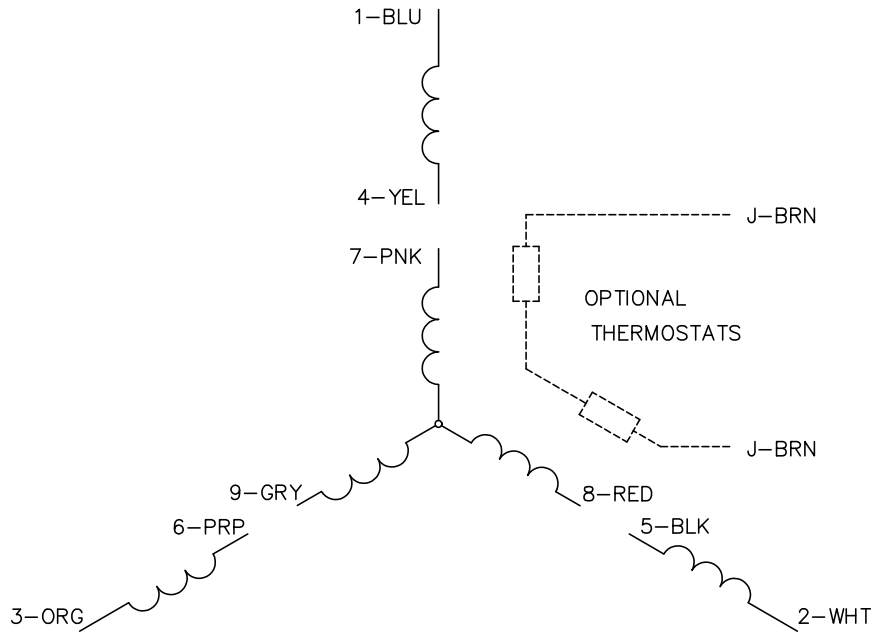
TORQUES (LB-FT) : PO=8 PU=4.4 LR=5.1 LRA=8.4



9/9/2024 ACPERF, record # 91699



CD0005



LOW VOLTAGE
(2Y)



LINE

HIGH VOLTAGE
(1Y)



LINE

NOTES:

1. INTERCHANGE ANY TWO LINE LEADS TO REVERSE ROTATION.
2. OPTIONAL THERMOSTATS ARE PROVIDED WHEN SPECIFIED.
3. ACTUAL NUMBER OF INTERNAL PARALLEL CIRCUITS MAY BE A MULTIPLE OF THOSE SHOWN ABOVE.
4. LEAD COLORS ARE OPTIONAL. LEADS MUST ALWAYS BE NUMBERED AS SHOWN.

CD0005

REV. DESC: REVISE TO SHOW OPTIONAL COLORS			
REV. LTR: E	BY: JLP	REVISED: 01/19/99 10:15	TDR: 0171435
S00000		FILE: AAA00005140	MDL: -
		MTL: -	

BALDOR ELECTRIC Co.

3PH, DV, 9 LEADS