

BALDOR • RELIANCE

Customer information packet

VFSWDM3542-E-G

0.75HP, 1760RPM, 3PH, 60HZ, 56C, 3522M, TENV, F

Class - None

Division - Not Applicable

Copyright © All product information within this document is subject to ABB Motors and Mechanical Inc. copyright © protection, unless otherwise noted.

9/9/2024 6:27:07 AM

Specifications

Enclosure	TENV
Frame	56C
Frame Material	Stainless Steel
Frequency	60.00 Hz
Haz Area Class and Group	None
Haz Area Division	Not Applicable
Motor Letter Type	Three Phase
Output @ Frequency	.750 HP @ 60 HZ
Phase	3
Synchronous Speed @ Frequency	1800 RPM @ 60 HZ
Voltage @ Frequency	208.0 V @ 60 HZ 230.0 V @ 60 HZ 460.0 V @ 60 HZ
Agency Approvals	CSA UR
Ambient Temperature	40 °C
Auxillary Box	No Auxillary Box
Auxillary Box Lead Termination	None
Base Indicator	No Mounting
Bearing Grease Type	Polyrex EM (-20F +300F)
Blower	None
Current @ Voltage	1.300 A @ 230.0 V 2.600 A @ 208.0 V
Design Code	B
Drip Cover	No Drip Cover
Duty Rating	CONT
Efficiency @ 100% Load	84.0 %
Electrically Isolated Bearing	Not Electrically Isolated
Feedback Device	NO FEEDBACK
Heater Indicator	No Heater
High Voltage Full Load Amps	1.3 a
Insulation Class	H

Part detail

Revision	F
Type	AC
Mech. spec.	
Base	
Status	PRD/A
Elec. spec.	35WGP564
Layout	35LY-000-651
Eff. date	06-17-2024
CD Diagram	CD0005
Poles	04
Leads	9#18
Proprietary	False
Created date	09-30-2021

Inverter Code	Inverter Ready
KVA Code	N
Lifting Lugs	No Lifting Lugs
Locked Bearing Indicator	Locked Bearing
Motor Lead Termination	Flying Leads
Motor Standards	NEMA
Motor Type	3522M
Mounting Arrangement	F1
Number of Poles	4
Overall Length	12.78 IN
Power Factor	70
Product Family	WD All SS Encapsulated
Pulley Face Code	C-Face
Rodent Screen	None
Service Factor	1.15
Shaft Diameter	0.625 IN
Shaft Ground Indicator	Shaft Grounding
Shaft Rotation	Reversible
Speed	1760 rpm
Speed Code	Single Speed
Starting Method	Direct on line
Thermal Device - Bearing	None
Thermal Device - Winding	None
Vibration Sensor Indicator	No Vibration Sensor
Winding Thermal 1	None
Winding Thermal 2	None

Nameplate

NP4293A01									
CAT.NO.	VFSWDM3542-E-G								
SPEC.	35-0000-1312								
HP	.75								
VOLTS	208-230/460								
AMPS	2.6/1.3								
R.P.M.	1760								
FRAME	56C		HZ	60		PH	3		
SER.F.	1.15		CODE	N	DES.	B	CLASS	H	
NEMA NOM. EFF.	84		P.F.	70					
RATING	40C AMB-CONT								
CC			USABLE AT 208V				N/A		
DE	6205		ODE	6205					
ENCL	TENV	SN							
	4:1CT, 10:1VT, IP69								

AC Induction Motor Performance Data

Record # 39345

Typical performance - not guaranteed values

Winding: 35WGP564-R005		Type: 3522M		Enclosure: TENV	
Nameplate Data			460 V, 60 Hz: High Voltage Connection		
Rated Output (HP)	.75	Full Load Torque	2.24 LB-FT		
Volts	208-230/460	Start Configuration	direct on line		
Full Load Amps	2.6/1.3	Breakdown Torque	11.1 LB-FT		
R.P.M.	1760	Pull-up Torque	5.62 LB-FT		
Hz	60	Locked-rotor Torque	8.1 LB-FT		
NEMA Design Code	B	Starting Current	11.1 A		
Service Factor (S.F.)	1.15	No-load Current	0.774 A		
NEMA Nom. Eff.	84	Line-line Res. @ 25°C	16 Ω		
Rating - Duty	40C AMB-CONT	Temp. Rise @ Rated Load	60°C		
S.F. Amps		Temp. Rise @ S.F. Load	69°C		
		Locked-rotor Power Factor	51.3		
		Rotor inertia	0.13 LB-FT ²		

Load Characteristics 460 V, 60 Hz, 0.75 HP

% of Rated Load	25	50	75	100	125	150	S.F.
Power Factor	32	49	62	69	76	81	69
Efficiency	71.7	81	84.4	85.4	85.2	84.9	84.2
Speed	1790	1782	1774	1765	1755	1744	1752
Line amperes	0.808	0.891	1.01	1.19	1.36	1.54	1.39

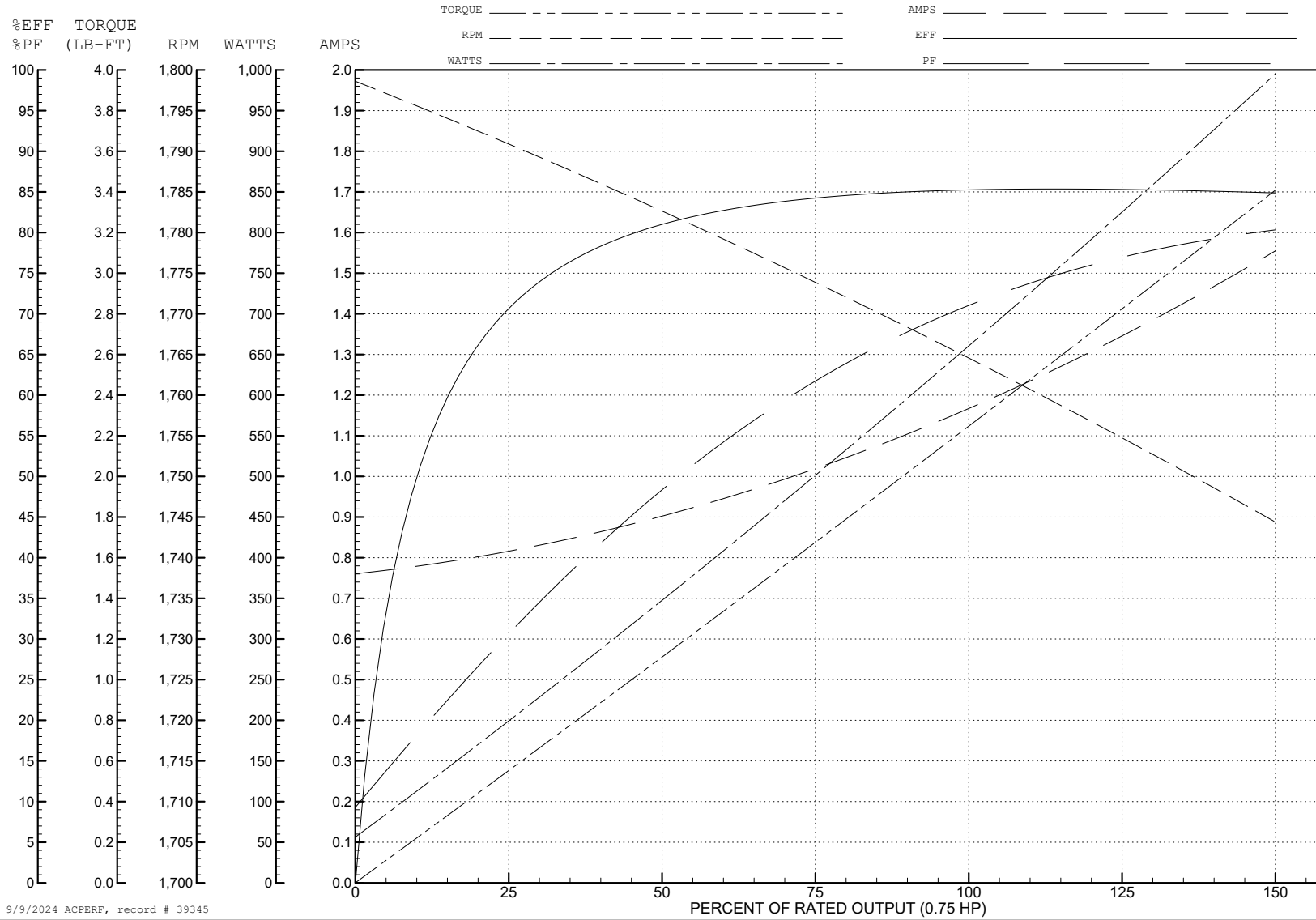
ABB Motors and Mechanical Inc.

WINDING # 35WGP564

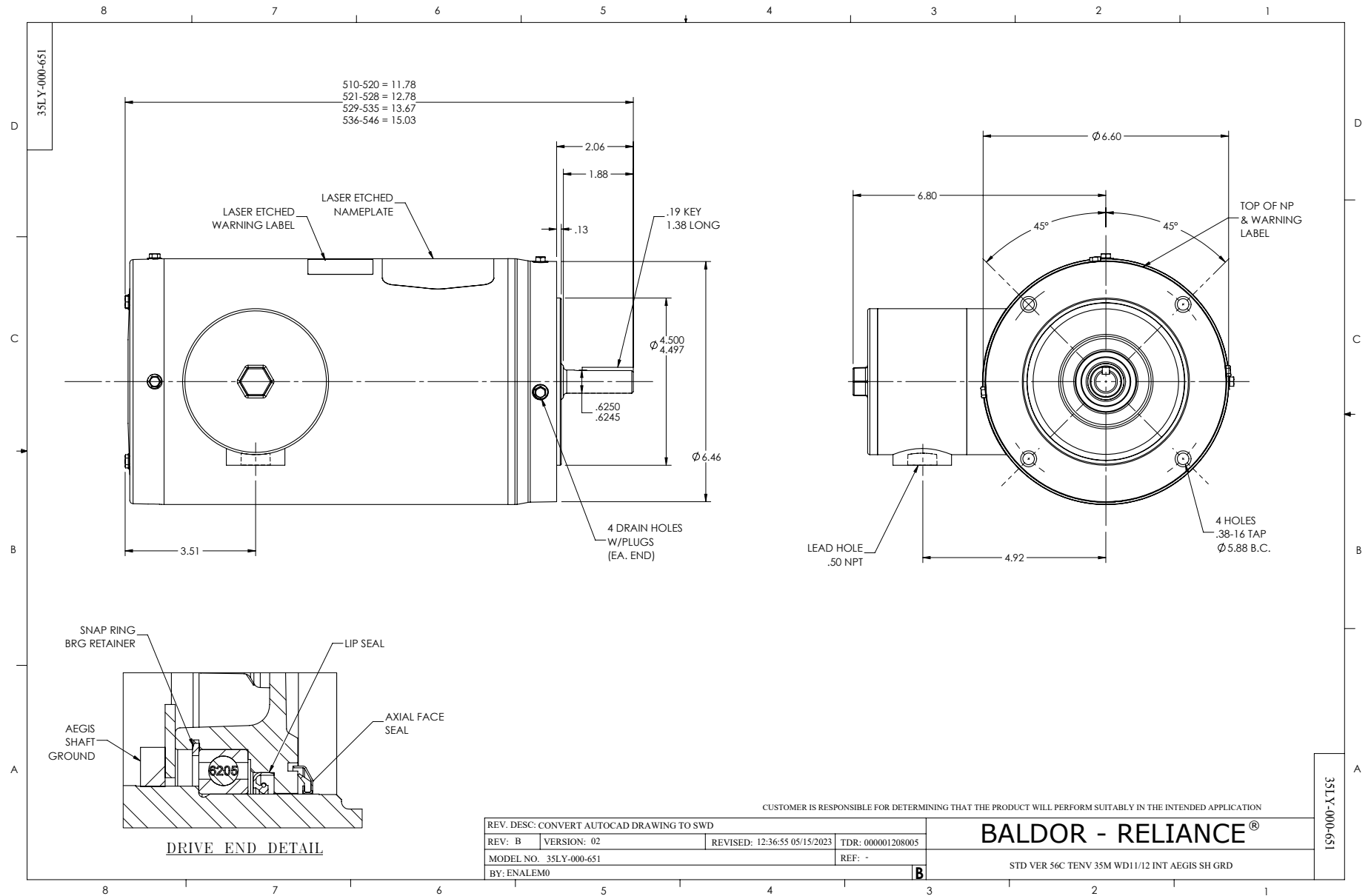
0.75 HP 3 PH 60 HZ 1760 RPM 460 V 3522M

Typical performance - not guaranteed values.

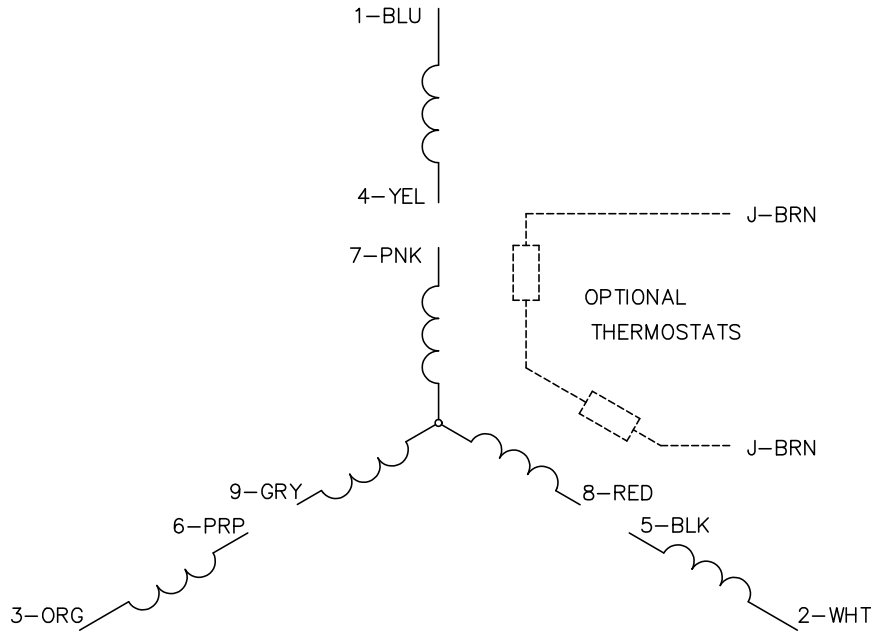
TORQUES (LB-FT): PO=11.1 PU=5.62 LR=8.1 LRA=11.1



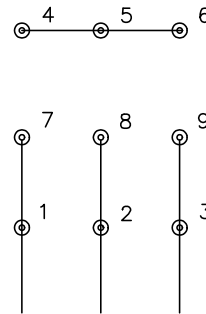
9/9/2024 ACPERF, record # 39345



CD0005

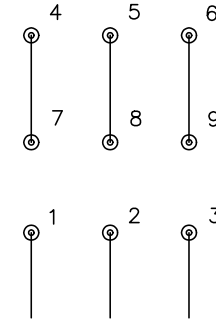


LOW VOLTAGE
(2Y)



LINE

HIGH VOLTAGE
(1Y)



LINE

NOTES:

1. INTERCHANGE ANY TWO LINE LEADS TO REVERSE ROTATION.
2. OPTIONAL THERMOSTATS ARE PROVIDED WHEN SPECIFIED.
3. ACTUAL NUMBER OF INTERNAL PARALLEL CIRCUITS MAY BE A MULTIPLE OF THOSE SHOWN ABOVE.
4. LEAD COLORS ARE OPTIONAL. LEADS MUST ALWAYS BE NUMBERED AS SHOWN.

CD0005

REV. DESC: REVISE TO SHOW OPTIONAL COLORS			
REV. LTR: E	BY: JLP	REVISED: 01/19/99 10:15	TDR: 0171435
S00000		FILE: AAA00005140	MDL: -
		MTL: -	

BALDOR ELECTRIC Co.

3PH, DV, 9 LEADS