

# ABB BALDOR RELIANCE III

---

## Customer information packet

VFSWDL3509

1HP, 3450RPM, 1PH, 60HZ, 56C, 3524L, TEFC, F1, N

Class - None

Division - Not Applicable

**Specifications**

<b>Enclosure</b>	TEFC
<b>Frame</b>	56C
<b>Frame Material</b>	Stainless Steel
<b>Frequency</b>	60.00 Hz
<b>Haz Area Class and Group</b>	None
<b>Haz Area Division</b>	Not Applicable
<b>Motor Letter Type</b>	Cap Start, Induction Run
<b>Output @ Frequency</b>	1.000 HP @ 60 HZ
<b>Phase</b>	1
<b>Synchronous Speed @ Frequency</b>	3600 RPM @ 60 HZ
<b>Voltage @ Frequency</b>	115.0 V @ 60 HZ 230.0 V @ 60 HZ
<b>Agency Approvals</b>	UR CSA
<b>Ambient Temperature</b>	40 °C
<b>Auxiliary Box</b>	NO AUXILLARY BOX
<b>Auxiliary Box Lead Termination</b>	None
<b>Base Indicator</b>	No Mounting
<b>Bearing Grease Type</b>	Polyrex EM (-20F +300F)
<b>Blower</b>	None
<b>Current @ Voltage</b>	11.600 A @ 115.0 V 5.800 A @ 230.0 V
<b>Design Code</b>	N
<b>Drip Cover</b>	No Drip Cover
<b>Duty Rating</b>	CONT
<b>Efficiency @ 100% Load</b>	68.0 %
<b>Electrically Isolated Bearing</b>	Not Electrically Isolated
<b>Feedback Device</b>	NO FEEDBACK
<b>Front Face Code</b>	Standard
<b>Front Shaft Indicator</b>	None
<b>Heater Indicator</b>	No Heater
<b>High Voltage Full Load Amps</b>	5.8 a

**Part Detail**

<b>Revision</b>	F
<b>Type</b>	AC
<b>Mech. spec.</b>	35E4628
<b>Base</b>	
<b>Status</b>	PRD/A
<b>Elec. spec.</b>	35WGL350
<b>Layout</b>	35LYE4628
<b>Eff. date</b>	08-30-2023
<b>CD Diagram</b>	CD0648
<b>Poles</b>	02
<b>Leads</b>	4#16 A PH,3#18 B PH
<b>Proprietary</b>	False
<b>Created date</b>	06-28-2017

<b>Insulation Class</b>	F
<b>Inverter Code</b>	Not Inverter
<b>KVA Code</b>	K
<b>Lifting Lugs</b>	No Lifting Lugs
<b>Locked Bearing Indicator</b>	Locked Bearing
<b>Motor Finish</b>	UNPAINTED
<b>Motor Lead Exit</b>	Ko Box
<b>Motor Lead Quantity/Wire Size</b>	@ 0 AWG 9 @ 18 AWG
<b>Motor Lead Termination</b>	Flying Leads
<b>Motor Standards</b>	NEMA
<b>Motor Type</b>	3524L
<b>Mounting Arrangement</b>	F1
<b>Number of Poles</b>	2
<b>Overall Length</b>	13.96 IN
<b>Power Factor</b>	80
<b>Product Family</b>	WD All SD Non-Encapsulated
<b>Pulley End Bearing Type</b>	Sealed Bearing
<b>Pulley Face Code</b>	C-Face
<b>Pulley Shaft Indicator</b>	Standard
<b>Rodent Screen</b>	None
<b>RoHS Status</b>	ROHS COMPLIANT
<b>Service Factor</b>	1.25
<b>Shaft Diameter</b>	0.625 IN
<b>Shaft Extension Location</b>	Pulley End
<b>Shaft Ground Indicator</b>	No Shaft Grounding
<b>Shaft Rotation</b>	Reversible
<b>Shaft Slinger Indicator</b>	No Slinger
<b>Speed</b>	3450 rpm
<b>Speed Code</b>	Single Speed
<b>Starting Method</b>	Direct on line
<b>Thermal Device - Bearing</b>	None
<b>Thermal Device - Winding</b>	None
<b>Vibration Sensor Indicator</b>	No Vibration Sensor

<b>Winding Thermal 1</b>	<b>None</b>
<b>Winding Thermal 2</b>	<b>None</b>

---

**Nameplate**

<b>NP4427ALG30</b>									
<b>CAT #</b>	VFSWDL3509			<b>WT</b>	41	<b>LBS</b>			
<b>SPEC</b>	35E4628L350G1			<b>ENCL</b>	TEFC				
<b>SER #</b>				<b>CC</b>		<b>IP</b>	69		
<b>HP</b>	1				<b>NEMA NOM. EFF</b>		68		
<b>VOLTS</b>	115/230								
<b>AMPS</b>	11.6/5.8			<b>PF</b>	80				
<b>RATING</b>	40C AMB-CONT								
<b>RPM</b>	3450								
<b>FRAME</b>	56C	<b>HZ</b>	60	<b>CODE</b>	K	<b>CLASS</b>	F		
<b>SER.F.</b>	1.25	<b>SF AMP</b>	13.8/6.9	<b>PH</b>	1	<b>DES</b>	N		
<b>DE</b>	6205	<b>ODE</b>	6205						
<b>LUBRICATION</b>	POLYREX EM								
<b>YR</b>								<b>QR</b>	

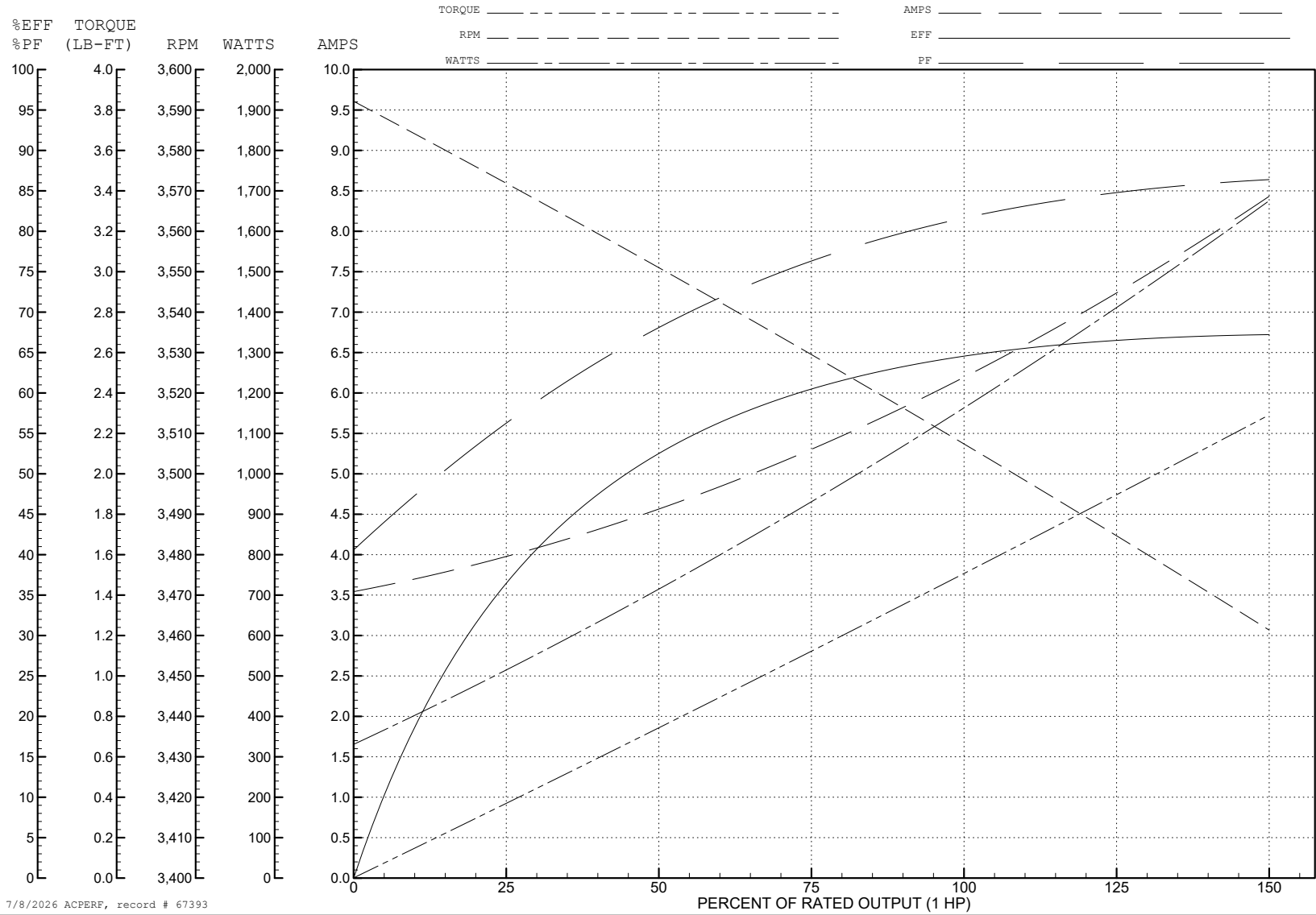
ABB Motors and Mechanical Inc.

WINDING # 35WGL350

Typical performance - not guaranteed values.

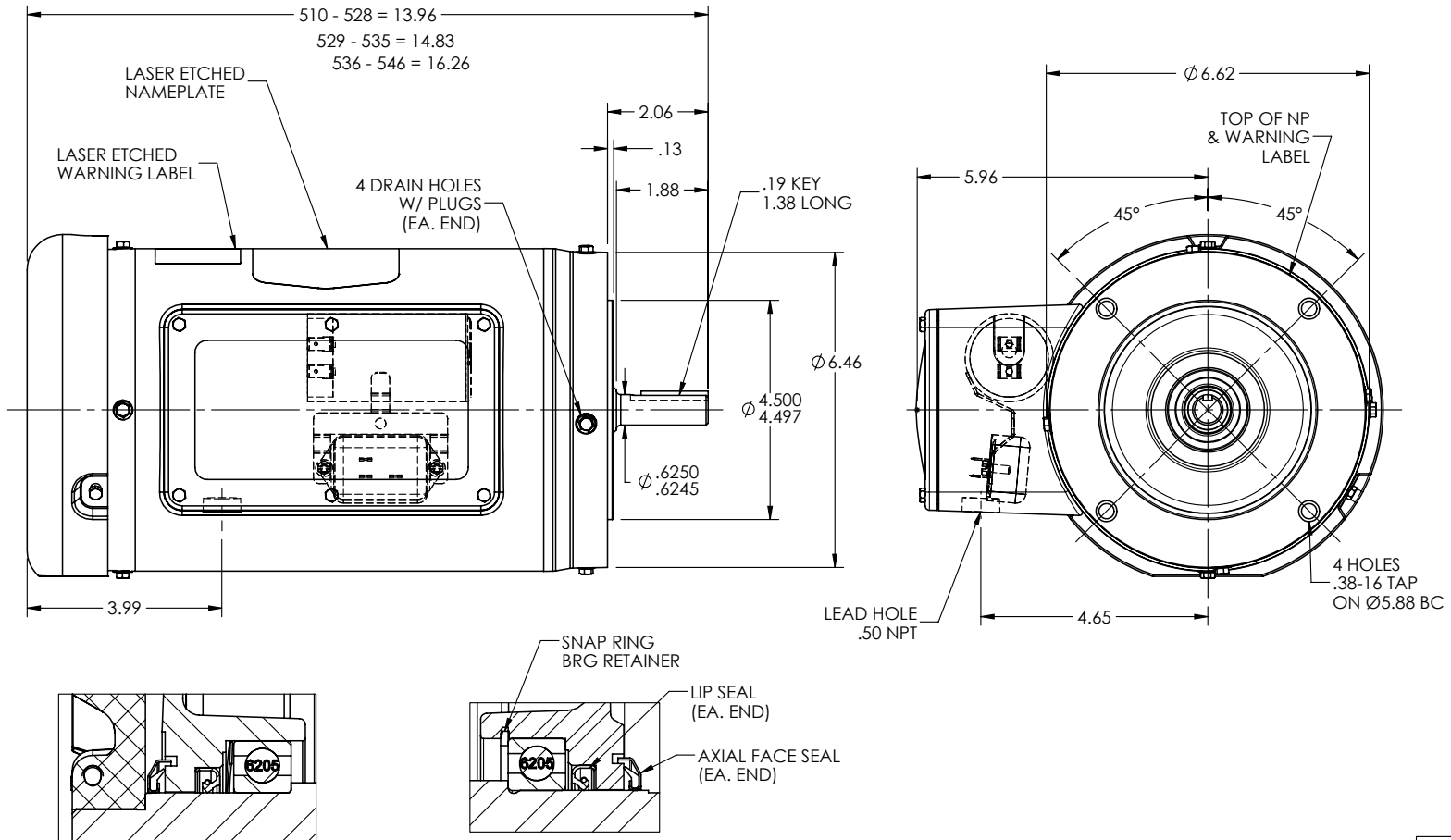
1 HP 1 PH 60 HZ 3450 RPM 230 V 3524L

TORQUES (LB-FT): PO=4.11 PU=3.53 LR=5.64 LRA=39.5



7/8/2026 ACPERF, record # 67393

35LYE4628



FRONT END DETAIL

PULLEY END DETAIL

CUSTOMER IS RESPONSIBLE FOR DETERMINING THAT BALDOR'S PRODUCT WILL PERFORM SUITABLY IN THE INTENDED APPLICATION

REV. DESC: REMOVE FACE DRAINS & DRAIN FTG; ADD DRAIN PLUG

REV: A    VERSION: 01    REVISED: 09:14:42 01/26/2023    TDR: 000001202627

35LYE4628

MODEL NO. 35LYE4628

BY: ENSTEK0

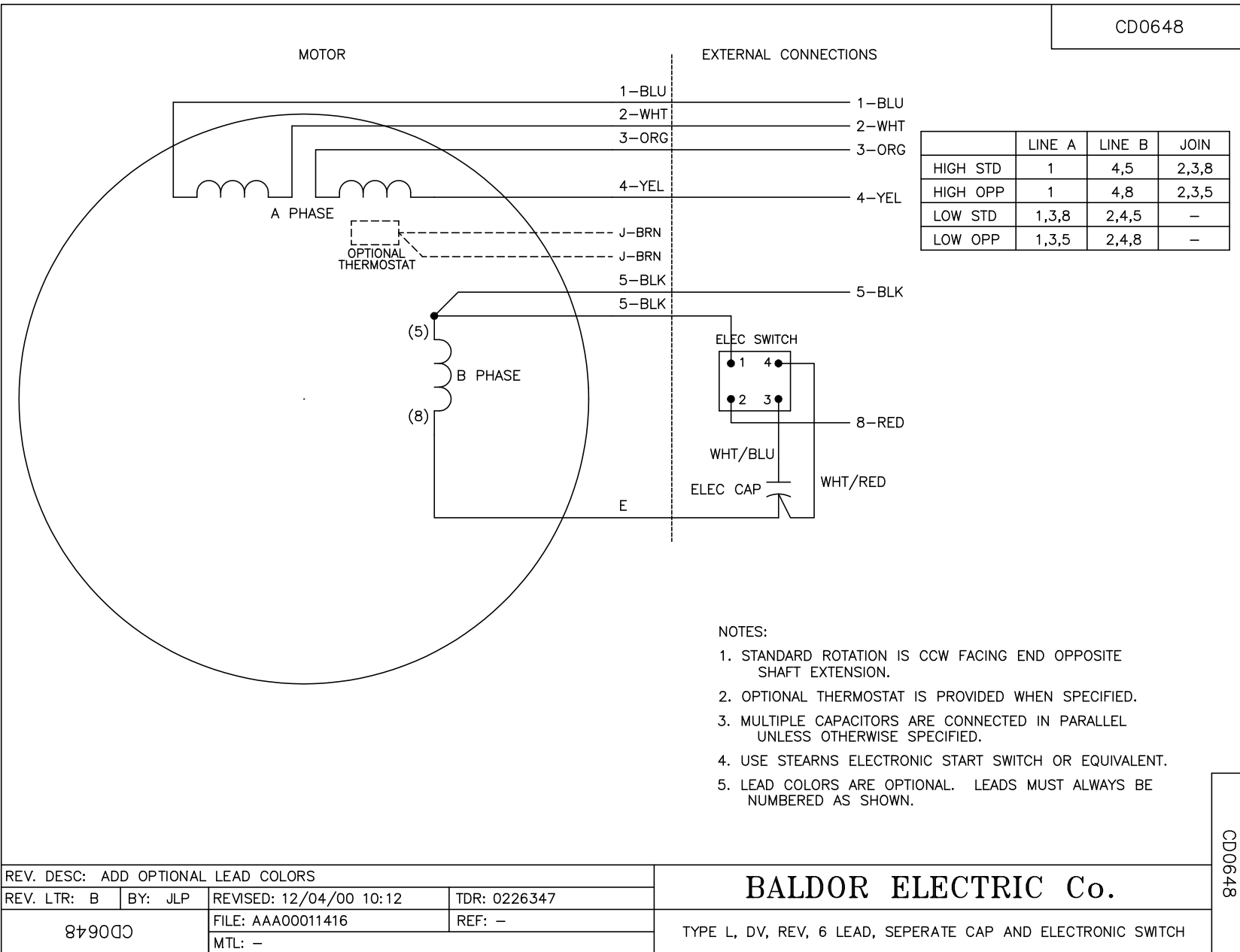
REF: -

**BALDOR**

STD VER 56C TEFC 35L WD11/12

35LYE4628

CD0648



REV. DESC: ADD OPTIONAL LEAD COLORS			
REV. LTR: B	BY: JLP	REVISED: 12/04/00 10:12	TDR: 0226347
879000		FILE: AAA00011416	REF: -
		MTL: -	

**BALDOR ELECTRIC Co.**

TYPE L, DV, REV, 6 LEAD, SEPERATE CAP AND ELECTRONIC SWITCH

CD0648