

ABB BALDOR RELIANCE III

Customer information packet

VFSSP5M3558T-E-G

2HP, 1800RPM, 3PH, 60HZ, 145TC, 3524B, TENV, F1

Class - None

Division - Not Applicable

Specifications

Enclosure	TENV
Frame	145TC
Frame Material	Stainless Steel
Frequency	60.00 Hz
Haz Area Class and Group	None
Haz Area Division	Not Applicable
Motor Letter Type	Brushless Wound Field PM Rotor
Output @ Frequency	2.000 HP @ 60 HZ
Phase	3
Synchronous Speed @ Frequency	1800 RPM @ 60 HZ
Voltage @ Frequency	230.0 V @ 60 HZ 460.0 V @ 60 HZ
Agency Approvals	WEEE C UR US
Ambient Temperature	40 °C
Auxiliary Box	NO AUXILLARY BOX
Auxiliary Box Lead Termination	None
Base Indicator	No Mounting
Bearing Grease Type	Polyrex EM (-20F +300F)
Blower	None
Current @ Voltage	2.300 A @ 460.0 V 4.600 A @ 230.0 V
Design Code	-
Drip Cover	No Drip Cover
Duty Rating	CONT
Efficiency @ 100% Load	89.5 %
Electrically Isolated Bearing	Not Electrically Isolated
Feedback Device	NO FEEDBACK
Front Shaft Indicator	None
Heater Indicator	No Heater
High Voltage Full Load Amps	2.3 a
Insulation Class	H

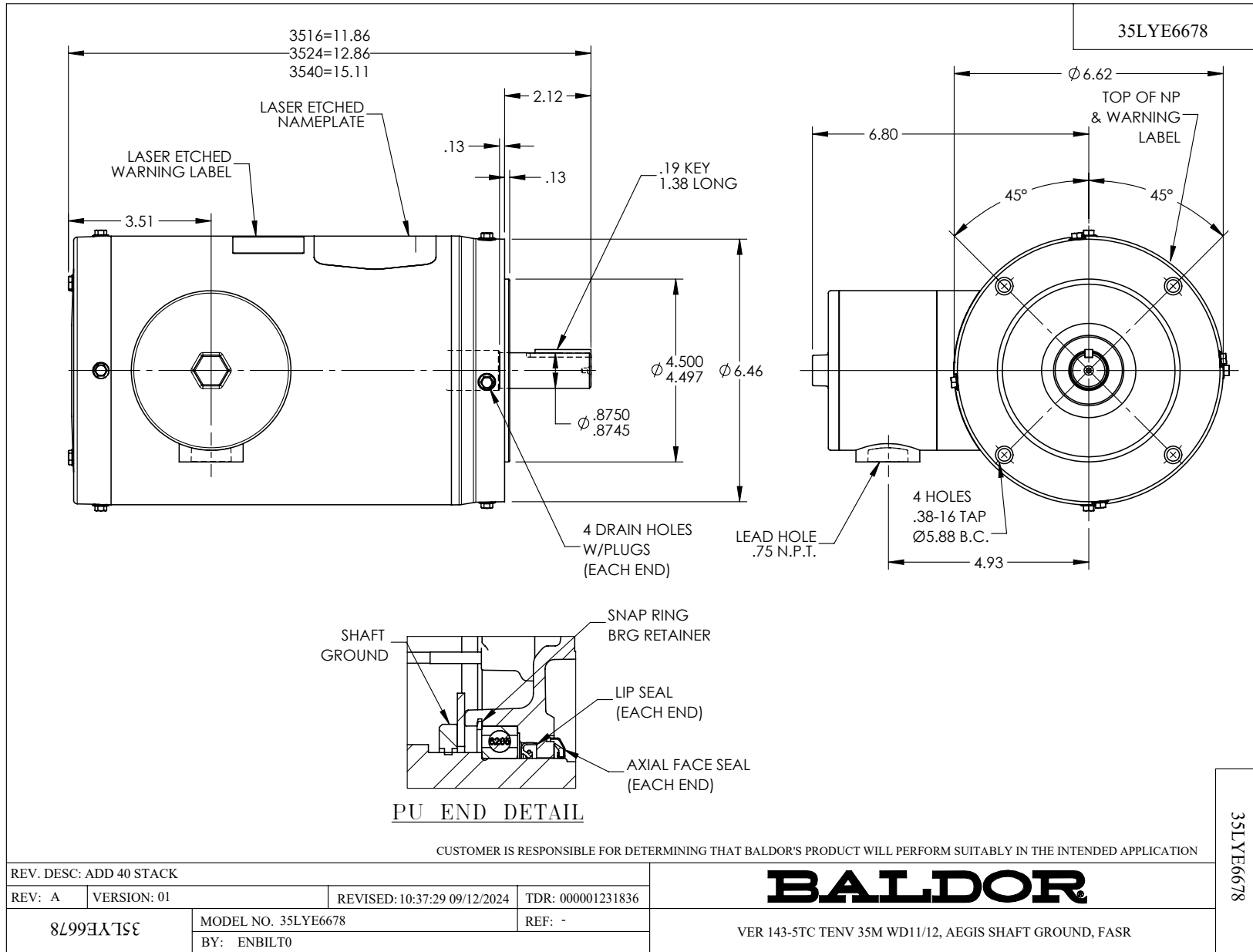
Part Detail

Revision	F
Type	AC
Mech. spec.	35E6678
Base	
Status	PRD/A
Elec. spec.	35WGK343
Layout	35LYE6678
Eff. date	01-29-2026
CD Diagram	CD0005A25
Poles	04
Leads	9#16
Proprietary	False
Created date	09-11-2024

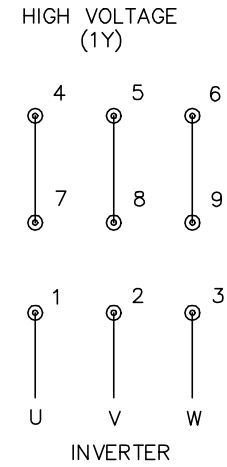
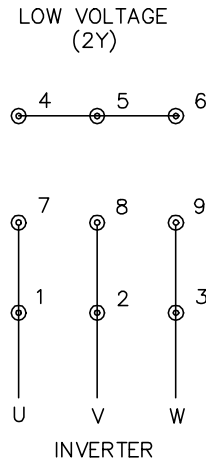
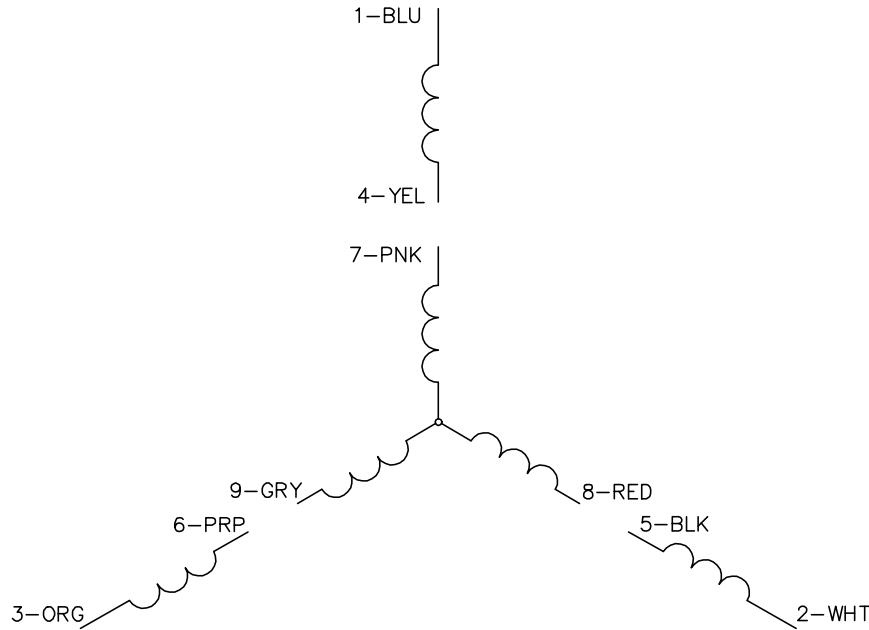
Inverter Code	03
KVA Code	-
Lifting Lugs	No Lifting Lugs
Locked Bearing Indicator	Locked Bearing
Max Speed	4000 rpm
Motor Finish	UNPAINTED
Motor Lead Quantity/Wire Size	9 @ 16 AWG
Motor Lead Termination	Flying Leads
Motor Standards	NEMA
Motor Type	3524B
Mounting Arrangement	F1
Number of Poles	4
Overall Length	12.86 IN
Power Factor	96
Product Family	WD All SS Encapsulated
Pulley End Bearing Type	Sealed Bearing
Pulley Face Code	C-Face
Pulley Shaft Indicator	Standard
Rodent Screen	None
Service Factor	1.15
Shaft Diameter	0.875 IN
Shaft Ground Indicator	Shaft Grounding
Shaft Rotation	Reversible
Shaft Slinger Indicator	No Slinger
Speed	1800 rpm
Speed Code	Single Speed
Starting Method	Direct on line
Thermal Device - Bearing	None
Thermal Device - Winding	None
Vibration Sensor Indicator	No Vibration Sensor
Winding Thermal 1	None
Winding Thermal 2	None

Nameplate

NP4427DLT49A												
CAT #	VFSSP5M3558T-E-G					WT		LBS				
SPEC	35E6678K343G1					ENCL		TENV				
SER #		FRAME	145TC				IP	69				
HP	2		RATING	40C AMB-CONT								
NEMA NOM. EFF	89.5	PF	96	HZ	60	PH	3	CLASS	H			
VOLTS	230/460			AMPS	4.6/2.3							
SER.F.	1.15	RPM	1800			MAX RPM	4000					
BEMF (V)	148/296			RS (OHMS)	2.9/11.5							
LD(MH)	19.7/78.9			LQ(MH)	101.5/406							
VPWM	CHP	60	TO	133								
CT	6	TO	60	VT	6	TO	60					
MATCHED INV	ACS380-04XX-06A9-2 / 03A3-4											
DE	6205		ODE	6205			YR					



CD0005A25



NOTES:

1. INTERCHANGE ANY TWO LINE LEADS TO REVERSE ROTATION.
2. ACTUAL NUMBER OF INTERNAL PARALLEL CIRCUITS MAY BE A MULTIPLE OF THOSE SHOWN ABOVE.
3. LEAD COLORS ARE OPTIONAL. LEADS MUST ALWAYS BE NUMBERED AS SHOWN.

CD0005A25

REV. DESC: NEW		
REV. LTR: -	VERSION: 00	TDR: 000001135746
FILE: \AAA\00253\082	REVISED: 01:10:57 03/30/2020	BY: ENMARSO
MTL: -	© □	

BALDOR - RELIANCE®

3PH, DV, 9 LEADS, ECS
SH 1 of 1