

BALDOR • RELIANCE

Customer information packet

VFDL3612TM

5HP, 1725RPM, 1PH, 60HZ, 184TC, 3646LC, TEFC, F

Class - None

Division - Not Applicable

Specifications

Enclosure	TEFC
Frame	184TC
Frame Material	Steel
Frequency	60.00 Hz
Motor Letter Type	Cap Start, Cap Run
Output @ Frequency	5.000 HP @ 60 HZ
Phase	1
Synchronous Speed @ Frequency	1800 RPM @ 60 HZ
Voltage @ Frequency	230.0 V @ 60 HZ
XP Class and Group	None
XP Division	Not Applicable
Agency Approvals	UR CSA
Ambient Temperature	40 °C
Auxillary Box	No Auxillary Box
Auxillary Box Lead Termination	None
Base Indicator	No Mounting
Bearing Grease Type	Polyrex EM (-20F +300F)
Blower	None
Current @ Voltage	23.000 A @ 230.0 V
Design Code	L
Drip Cover	No Drip Cover
Duty Rating	CONT
Efficiency @ 100% Load	80.0 %
Electrically Isolated Bearing	Not Electrically Isolated
Feedback Device	NO FEEDBACK
Front Face Code	Standard
Front Shaft Indicator	None
Heater Indicator	No Heater
High Voltage Full Load Amps	23.0 a
Insulation Class	F
Inverter Code	Not Inverter

Part detail

Revision	E
Type	AC
Mech. spec.	36Q456
Base	
Status	PRD/A
Elec. spec.	36WGW279
Layout	36LYQ456
Eff. date	05-23-2023
CD Diagram	CD0152
Poles	04
Leads	2#10 A PH,3#16 B&J
Proprietary	False
Created date	03-10-2015

KVA Code	J
Lifting Lugs	Standard Lifting Lugs
Locked Bearing Indicator	Locked Bearing
Motor Lead Exit	Ko Box
Motor Lead Quantity/Wire Size	2 @ 10 AWG, A PH
Motor Lead Termination	Flying Leads
Motor Standards	NEMA
Motor Type	3646LC
Mounting Arrangement	F2
Number of Poles	4
Overall Length	18.04 IN
Power Factor	88
Product Family	General Purpose
Pulley End Bearing Type	Sealed Bearing
Pulley Face Code	C-Face
Pulley Shaft Indicator	Standard
Rodent Screen	None
Service Factor	1.00
Shaft Diameter	1.125 IN
Shaft Extension Location	Pulley End
Shaft Ground Indicator	No Shaft Grounding
Shaft Rotation	Reversible
Shaft Slinger Indicator	Shaft Slinger
Speed	1725 rpm
Speed Code	Single Speed
Starting Method	Direct on line
Thermal Device - Bearing	None
Thermal Device - Winding	None
Vibration Sensor Indicator	No Vibration Sensor
Winding Thermal 1	Manual Thermal Overload
Winding Thermal 1 Location	KO
Winding Thermal 2	None

Nameplate

NP1280L									
CAT.NO.	VFDL3612TM								
SPEC.	36Q456W279G1								
HP	5								
VOLTS	230								
AMP	23								
RPM	1725								
FRAME	184TC	HZ	60	PH	1				
SER.F.	1.00	CODE	J	DES	L	CL	F		
NEMA-NOM-EFF	80	PF	88						
RATING	40C AMB-CONT								
CC							USABLE AT 208V	N/A	
DE	6206	ODE	6205						
ENCL	TEFC	SN							

AC Induction Motor Performance Data

Record # 10712

Typical performance - not guaranteed values

Winding: 36WGW279-R001		Type: 3646LC		Enclosure: TEFC	
Nameplate Data			230 V, 60 Hz: Single Voltage Motor		
Rated Output (HP)	5	Full Load Torque	15 LB-FT		
Volts	230	Start Configuration	direct on line		
Full Load Amps	23	Breakdown Torque	43 LB-FT		
R.P.M.	1725	Pull-up Torque	36 LB-FT		
Hz	60	Locked-rotor Torque	46 LB-FT		
NEMA Design Code	L	Starting Current	163 A		
Service Factor (S.F.)	1	No-load Current	10 A		
NEMA Nom. Eff.	80	Line-line Res. @ 25°C	0.353 Ω A Ph 2.23 Ω B Ph		
Rating - Duty	40C AMB-CONT	Temp. Rise @ Rated Load	97°C		

Load Characteristics 230 V, 60 Hz, 5 HP

% of Rated Load	25	50	75	100	125	150
Power Factor	54	71	85	89	89	91
Efficiency	65	76.1	81.5	80.8	79.3	75.5
Speed	1786	1769	1750	1732	1713	1687
Line amperes	12.7	14	18.5	22.6	27.3	33.5

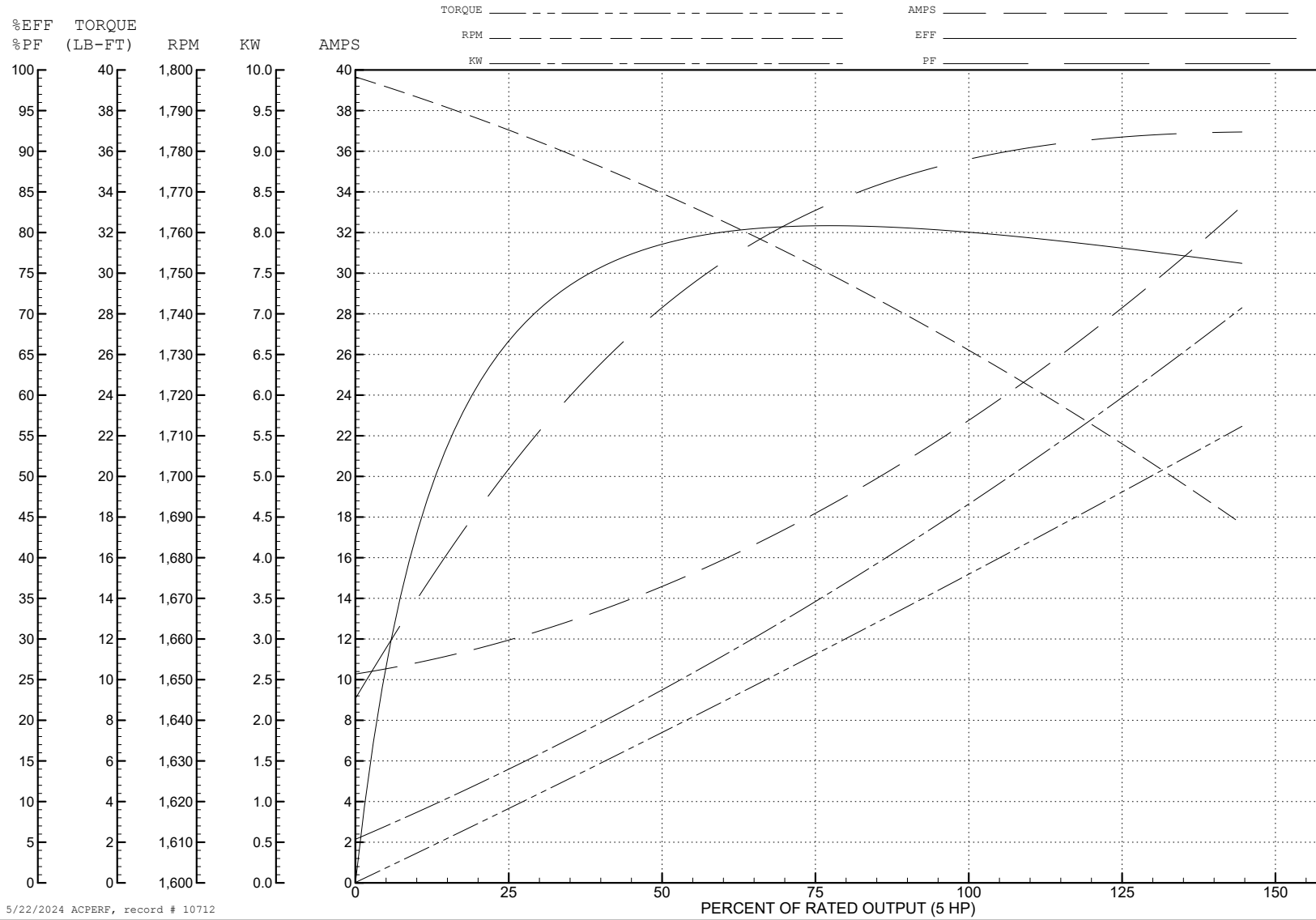
ABB Motors and Mechanical Inc.

WINDING # 36WGW279

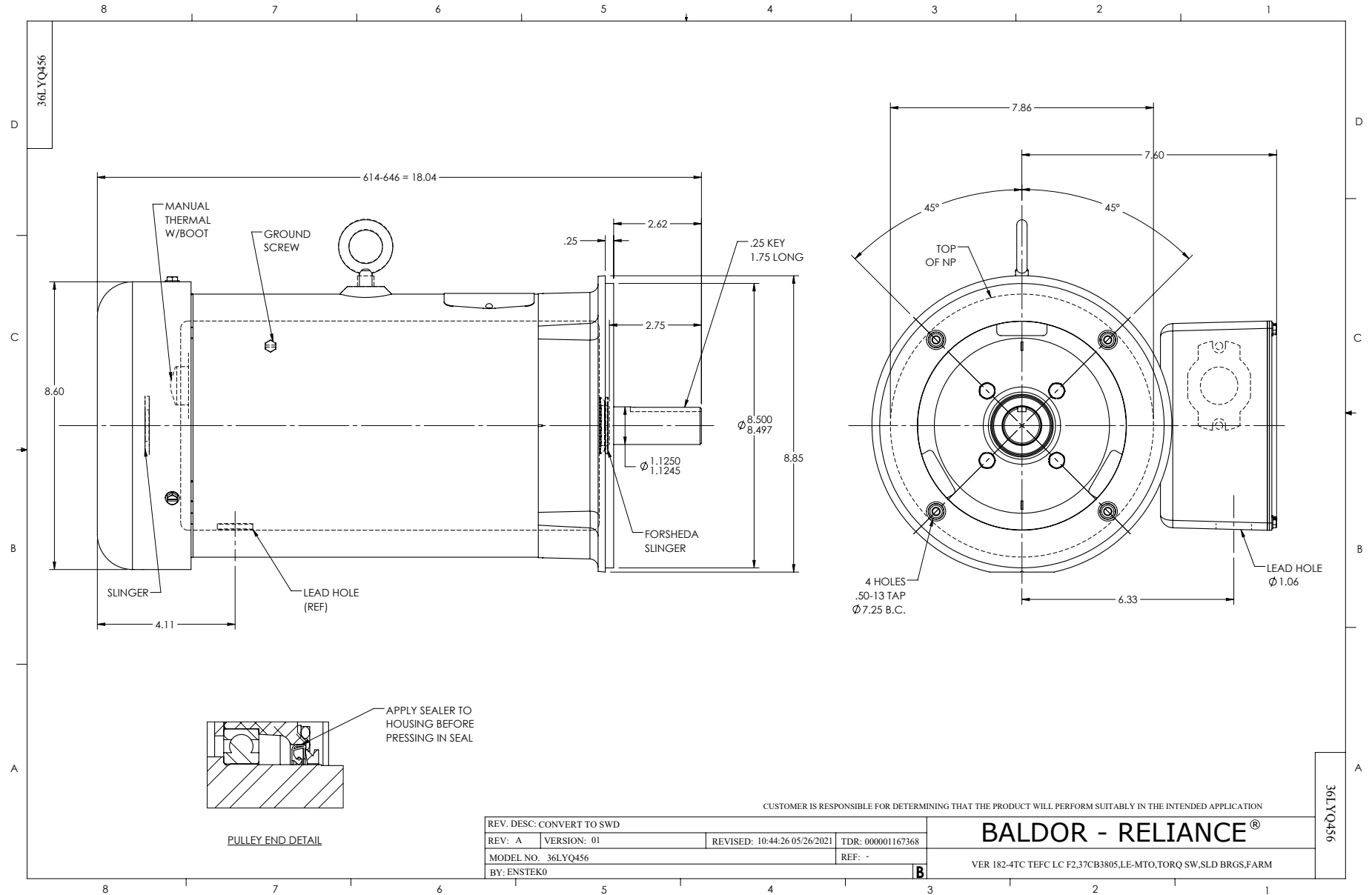
Typical performance - not guaranteed values.

5 HP 1 PH 60 HZ 1725 RPM 230 V 3646LC

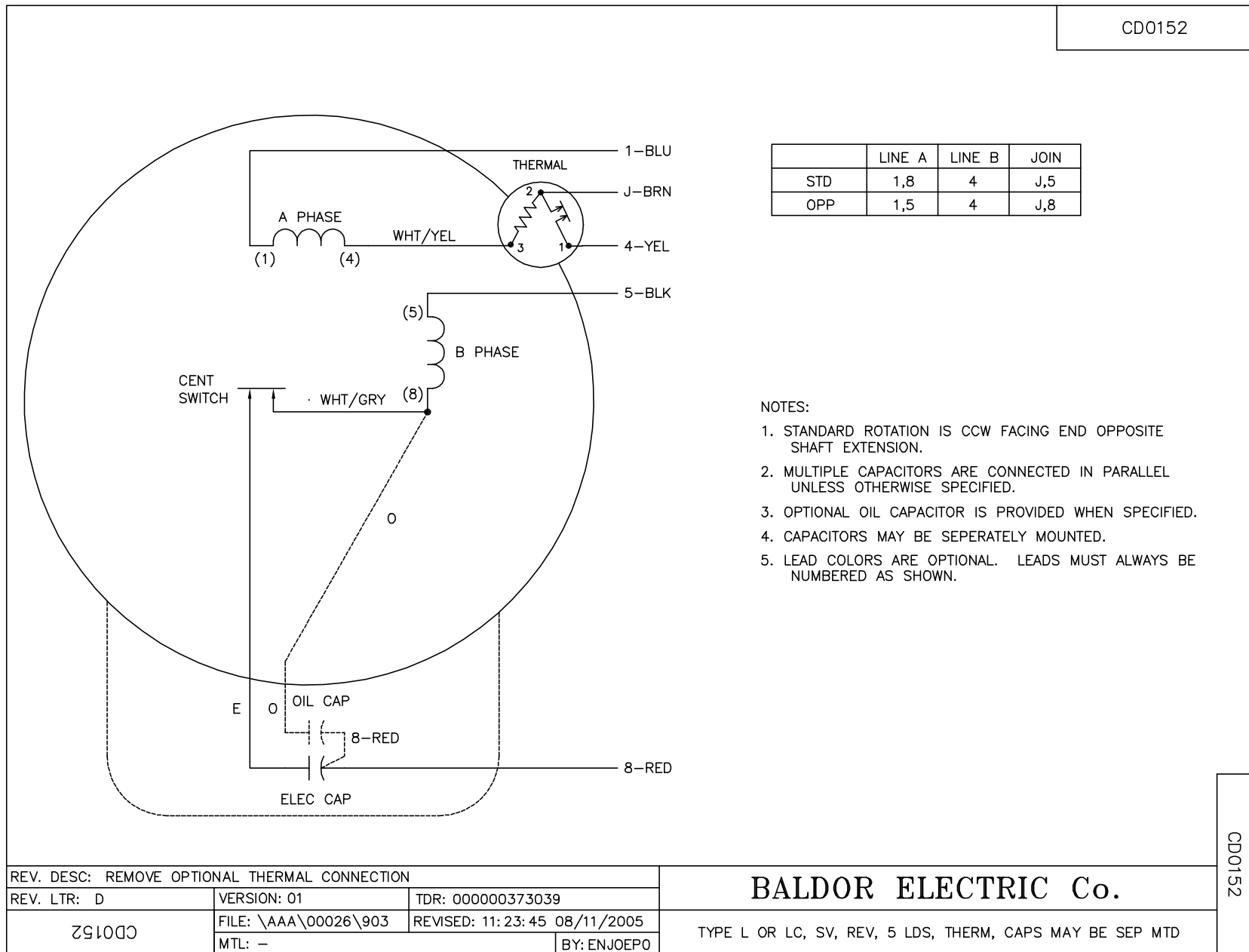
TORQUES (LB-FT): PO=43 PU=36 LR=46 LRA=163



5/22/2024 ACPERF, record # 10712



CD0152



	LINE A	LINE B	JOIN
STD	1,8	4	J,5
OPP	1,5	4	J,8

NOTES:

1. STANDARD ROTATION IS CCW FACING END OPPOSITE SHAFT EXTENSION.
2. MULTIPLE CAPACITORS ARE CONNECTED IN PARALLEL UNLESS OTHERWISE SPECIFIED.
3. OPTIONAL OIL CAPACITOR IS PROVIDED WHEN SPECIFIED.
4. CAPACITORS MAY BE SEPERATELY MOUNTED.
5. LEAD COLORS ARE OPTIONAL. LEADS MUST ALWAYS BE NUMBERED AS SHOWN.

REV. DESC: REMOVE OPTIONAL THERMAL CONNECTION		
REV. LTR: D	VERSION: 01	TDR: 000000373039
CD0152	FILE: \AAA\00026\903	REVISED: 11: 23: 45 08/11/2005
	MTL: -	BY: ENJOEPO

BALDOR ELECTRIC Co.

TYPE L OR LC, SV, REV, 5 LDS, THERM, CAPS MAY BE SEP MTD

CD0152