



---

# Customer information packet

## VFDL3516TM

2HP, 1740RPM, 1PH, 60HZ, 145TC, 3534LC, TEFC, F

Class - None

Division - Not Applicable

## Specifications

Enclosure	TEFC
Frame	145TC
Frame Material	Steel
Frequency	60.00 Hz
Haz Area Class and Group	None
Haz Area Division	Not Applicable
Motor Letter Type	Cap Start, Cap Run
Output @ Frequency	2.000 HP @ 60 HZ
Phase	1
Synchronous Speed @ Frequency	1800 RPM @ 60 HZ
Voltage @ Frequency	230.0 V @ 60 HZ
Agency Approvals	CURUS
Ambient Temperature	40 °C
Auxillary Box	No Auxillary Box
Auxillary Box Lead Termination	None
Base Indicator	No Mounting
Bearing Grease Type	Polyrex EM (-20F +300F)
Blower	None
Current @ Voltage	8.200 A @ 230.0 V
Design Code	L
Drip Cover	No Drip Cover
Duty Rating	CONT
Efficiency @ 100% Load	78.0 %
Electrically Isolated Bearing	Not Electrically Isolated
Feedback Device	NO FEEDBACK
Front Shaft Indicator	None
Heater Indicator	No Heater
High Voltage Full Load Amps	8.2 a
Insulation Class	F
Inverter Code	Not Inverter
KVA Code	J
Lifting Lugs	No Lifting Lugs

## Part detail

Revision	A
Type	AC
Mech. spec.	35E3081
Base	
Status	PRD/A
Elec. spec.	35WGG819
Layout	35LYE3081
Eff. date	01-07-2025
CD Diagram	CD0002A02
Poles	04
Leads	2#16 A PH,3#18 B&J
Proprietary	False
Created date	12-13-2024

Locked Bearing Indicator	Locked Bearing
Motor Lead Quantity/Wire Size	2 @ 16 AWG, A PH
Motor Lead Termination	Flying Leads
Motor Standards	NEMA
Motor Type	3534LC
Mounting Arrangement	F2
Number of Poles	4
Overall Length	14.17 IN
Power Factor	99
Product Family	General Purpose
Pulley End Bearing Type	Ball
Pulley Face Code	C-Face
Pulley Shaft Indicator	Standard
Rodent Screen	None
Service Factor	1.15
Shaft Diameter	0.875 IN
Shaft Ground Indicator	No Shaft Grounding
Shaft Rotation	Reversible
Shaft Slinger Indicator	Shaft Slinger
Speed	1740 rpm
Speed Code	Single Speed
Starting Method	Direct on line
Thermal Device - Bearing	None
Thermal Device - Winding	None
Vibration Sensor Indicator	No Vibration Sensor
Winding Thermal 1	Manual Thermal Overload
Winding Thermal 1 Location	KO
Winding Thermal 2	None

**Nameplate**

<b>NP1280L</b>									
<b>CAT.NO.</b>	VFDL3516TM								
<b>SPEC.</b>	35E3081G819G1								
<b>HP</b>	2								
<b>VOLTS</b>	230								
<b>AMP</b>	8.2								
<b>RPM</b>	1740								
<b>FRAME</b>	145TC	<b>HZ</b>	60	<b>PH</b>	1				
<b>SER.F.</b>	1.15	<b>CODE</b>	J	<b>DES</b>	L	<b>CL</b>	F		
<b>NEMA-NOM-EFF</b>	78	<b>PF</b>	99						
<b>RATING</b>	40C AMB-CONT								
<b>CC</b>									
<b>DE</b>	6205	<b>ODE</b>	6203						
<b>ENCL</b>	TEFC	<b>SN</b>							
	SFA 9.46								

**AC Induction Motor Performance Data**

Record # 108862

Preliminary Data Sheet

<b>Winding:</b> A36WG1831-R016		<b>Type:</b> A36070M		<b>Enclosure:</b> TENV	
<b>Nameplate Data</b>			<b>460 V, 60 Hz: Single Voltage Motor</b>		
<b>Rated Output (HP)</b>	75	<b>Full Load Torque</b>	220 LB-FT		
<b>Volts</b>	460	<b>Start Configuration</b>	direct on line		
<b>Full Load Amps</b>	87.1	<b>Breakdown Torque</b>	643 LB-FT		
<b>R.P.M.</b>	1785	<b>Pull-up Torque</b>	387 LB-FT		
<b>Hz</b>	60 <b>Phase</b>	3	<b>Locked-rotor Torque</b>	499 LB-FT	
<b>NEMA Design Code</b>	- <b>KVA Code</b>	H	<b>Starting Current</b>	627 A	
<b>Service Factor (S.F.)</b>		1	<b>No-load Current</b>	30.83 A	
<b>NEMA Nom. Eff.</b>	94.5 <b>Power Factor</b>	85	<b>Line-line Res. @ 25°C</b>	0.0843 Ω	
<b>Rating - Duty</b>	40C AMB - 60 MIN		<b>Temp. Rise @ Rated Load</b>	62°C	
			<b>Locked-rotor Power Factor</b>	33.9	
			<b>Rotor inertia</b>	16.2 lb-ft <sup>2</sup>	

**Load Characteristics 460 V, 60 Hz, 75 HP**

<b>% of Rated Load</b>	<b>25</b>	<b>50</b>	<b>75</b>	<b>100</b>	<b>125</b>	<b>150</b>
<b>Power Factor</b>	52	73	82	85	86	86
<b>Efficiency</b>	89.6	93.9	94.4	94.5	94.4	93.7
<b>Speed</b>	1796	1792	1788	1783	1779	1773
<b>Line amperes</b>	37.34	50.94	68.16	87.08	108	130

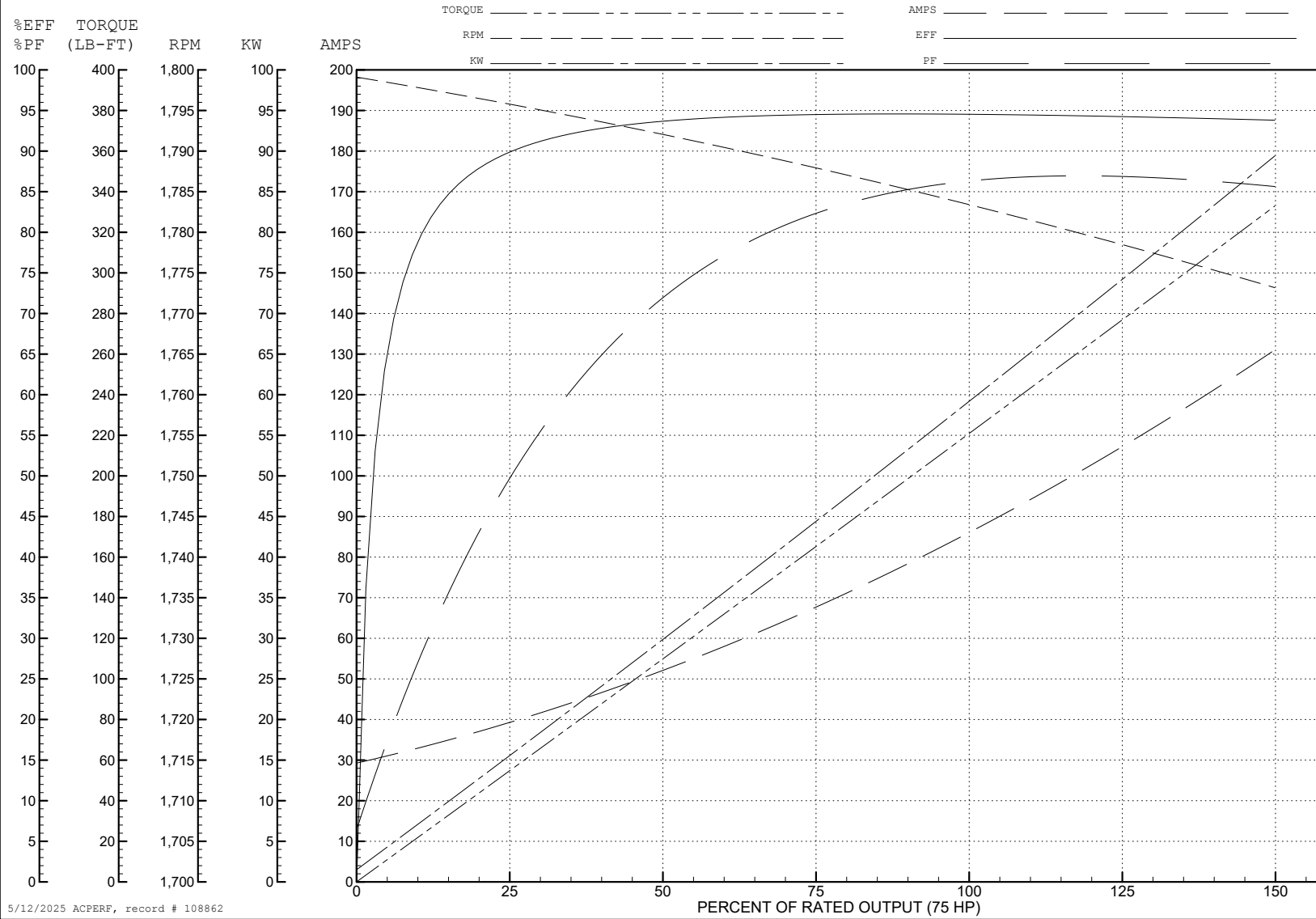
ABB Motors and Mechanical Inc.

WINDING # A36WG1831-R01

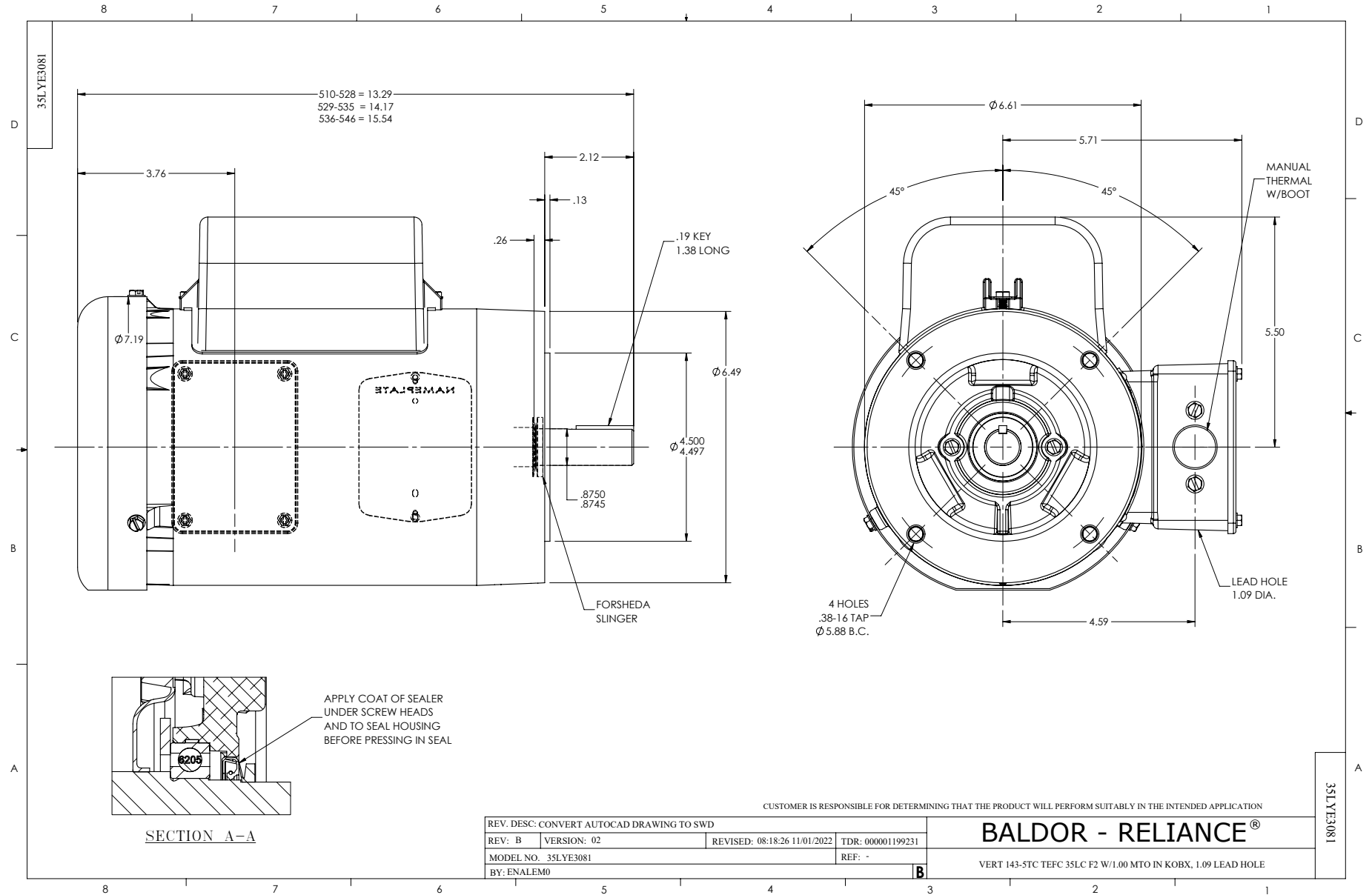
Typical performance - not guaranteed values.

75 HP 3 PH 60 HZ 1785 RPM 460 V A36070M

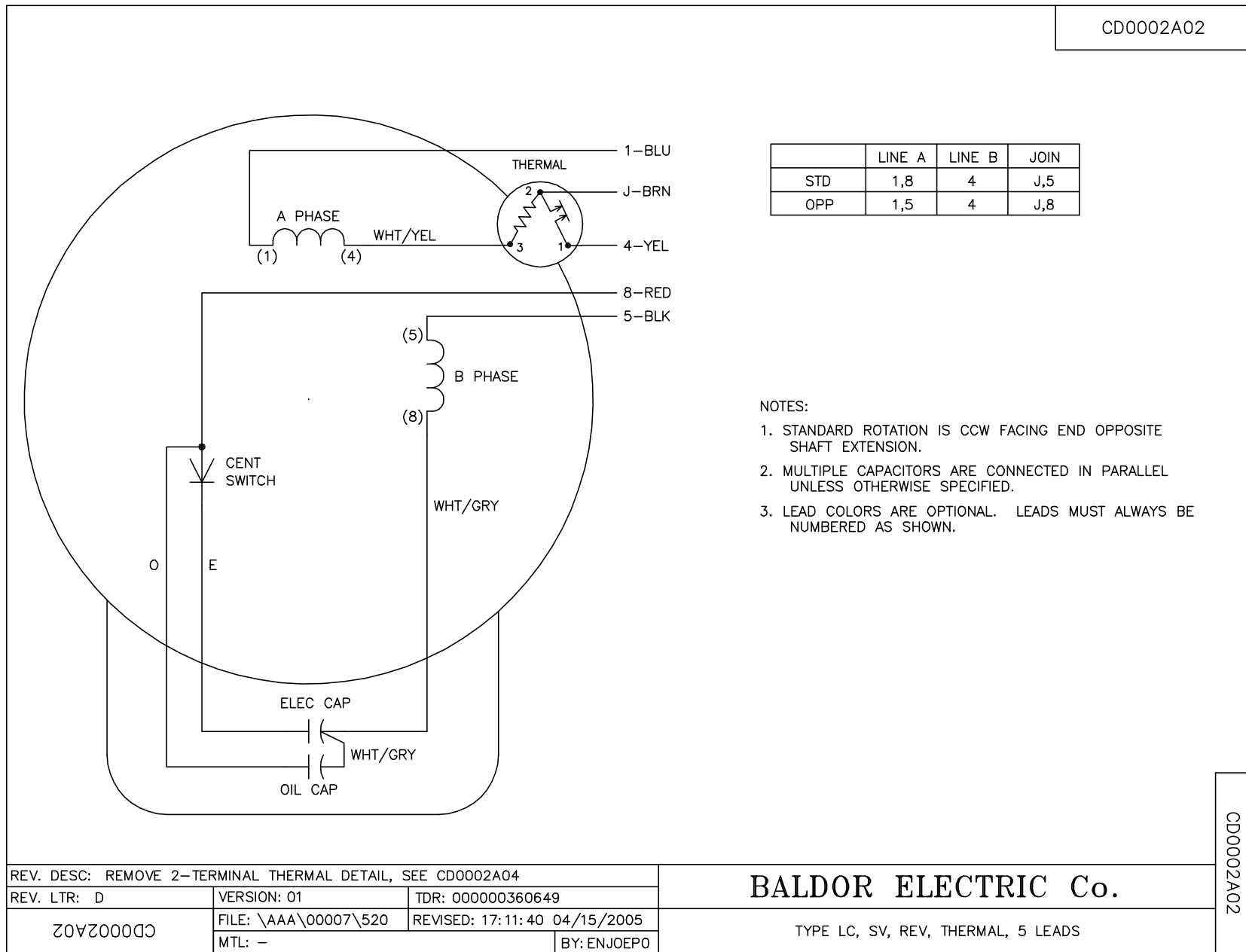
TORQUES (LB-FT): PO=643 PU=387 LR=499 LRA=627



5/12/2025 ACPERF, record # 108862



CD0002A02



REV. DESC: REMOVE 2-TERMINAL THERMAL DETAIL, SEE CD0002A04		
REV. LTR: D	VERSION: 01	TDR: 000000360649
CD0002A02	FILE: \AAA\00007\520	REVISED: 17:11:40 04/15/2005
	MTL: -	BY: ENJOEPO

**BALDOR ELECTRIC Co.**

TYPE LC, SV, REV, THERMAL, 5 LEADS

CD0002A02