

ABB BALDOR RELIANCE III

Customer information packet

VEWDM3554T

1.5HP, 1770RPM, 3PH, 60HZ, 145TC, 3530M, TENV

Class - None

Division - Not Applicable

Specifications

| | |
|---------------------------------------|---|
| Enclosure | TENV |
| Frame | 145TC |
| Frame Material | Steel |
| Frequency | 60.00 Hz |
| Haz Area Class and Group | None |
| Haz Area Division | Not Applicable |
| Motor Letter Type | Three Phase |
| Output @ Frequency | 1.500 HP @ 60 HZ |
| Phase | 3 |
| Synchronous Speed @ Frequency | 1800 RPM @ 60 HZ |
| Voltage @ Frequency | 230.0 V @ 60 HZ 460.0 V @ 60 HZ |
| Agency Approvals | NEMA PREMIUM NEMA_PREMIUM UR CSA EEV |
| Ambient Temperature | 40 °C |
| Auxiliary Box | NO AUXILLARY BOX |
| Auxiliary Box Lead Termination | None |
| Base Indicator | No Mounting |
| Bearing Grease Type | Polyrex EM (-20F +300F) |
| Blower | None |
| Current @ Voltage | 2.300 A @ 460.0 V 4.600 A @ 230.0 V |
| Design Code | B |
| Drip Cover | No Drip Cover |
| Duty Rating | CONT |
| Efficiency @ 100% Load | 86.5 % |
| Electrically Isolated Bearing | Not Electrically Isolated |
| Feedback Device | NO FEEDBACK |
| Front Shaft Indicator | None |
| Heater Indicator | No Heater |

Part Detail

| | |
|---------------------|------------|
| Revision | F |
| Type | AC |
| Mech. spec. | 35SS606 |
| Base | |
| Status | PRD/A |
| Elec. spec. | 35WGG178 |
| Layout | 35LYSS606 |
| Eff. date | 06-10-2025 |
| CD Diagram | CD0005 |
| Poles | 04 |
| Leads | 9#18 |
| Proprietary | False |
| Created date | 01-10-2022 |

| | |
|--------------------------------------|---------------------|
| High Voltage Full Load Amps | 2.3 a |
| Insulation Class | H |
| Inverter Code | Not Inverter |
| KVA Code | M |
| Lifting Lugs | No Lifting Lugs |
| Locked Bearing Indicator | Locked Bearing |
| Motor Lead Quantity/Wire Size | 9 @ 18 AWG |
| Motor Lead Termination | Flying Leads |
| Motor Standards | NEMA |
| Motor Type | 3530M |
| Mounting Arrangement | F1 |
| Number of Poles | 4 |
| Overall Length | 12.12 IN |
| Power Factor | 72 |
| Product Family | Wash Down |
| Pulley End Bearing Type | Sealed Bearing |
| Pulley Face Code | C-Face |
| Pulley Shaft Indicator | Standard |
| Rodent Screen | None |
| Service Factor | 1.00 |
| Shaft Diameter | 0.875 IN |
| Shaft Ground Indicator | No Shaft Grounding |
| Shaft Rotation | Reversible |
| Shaft Slinger Indicator | Shaft Slinger |
| Speed | 1770 rpm |
| Speed Code | Single Speed |
| Starting Method | Direct on line |
| Thermal Device - Bearing | None |
| Thermal Device - Winding | None |
| Vibration Sensor Indicator | No Vibration Sensor |
| Winding Thermal 1 | None |
| Winding Thermal 2 | None |

Nameplate

| NP1669L | | | | | | | | | |
|---------------------|---------------|-------------|------------|------------|---|--------------|-----------|---|--|
| CAT.NO. | VEWDM3554T | | | | | | | | |
| SPEC. | 35SS606G178G1 | | | | | | | | |
| HP | 1.5 | | | | | | | | |
| VOLTS | 230/460 | | | | | | | | |
| AMP | 4.6/2.3 | | | | | | | | |
| RPM | 1770 | | | | | | | | |
| FRAME | 145TC | | HZ | 60 | | | PH | 3 | |
| SER.F. | 1.15 | CODE | M | DES | B | CLASS | H | | |
| NEMA-NOM-EFF | 86.5 | PF | 72 | | | | | | |
| RATING | 40C AMB-CONT | | | | | | | | |
| CC | 010A | | | | | | | | |
| DE | 6205 | | ODE | 6203 | | | | | |
| ENCL | TENV | SN | | | | | | | |
| BLANK | | | | | | | | | |

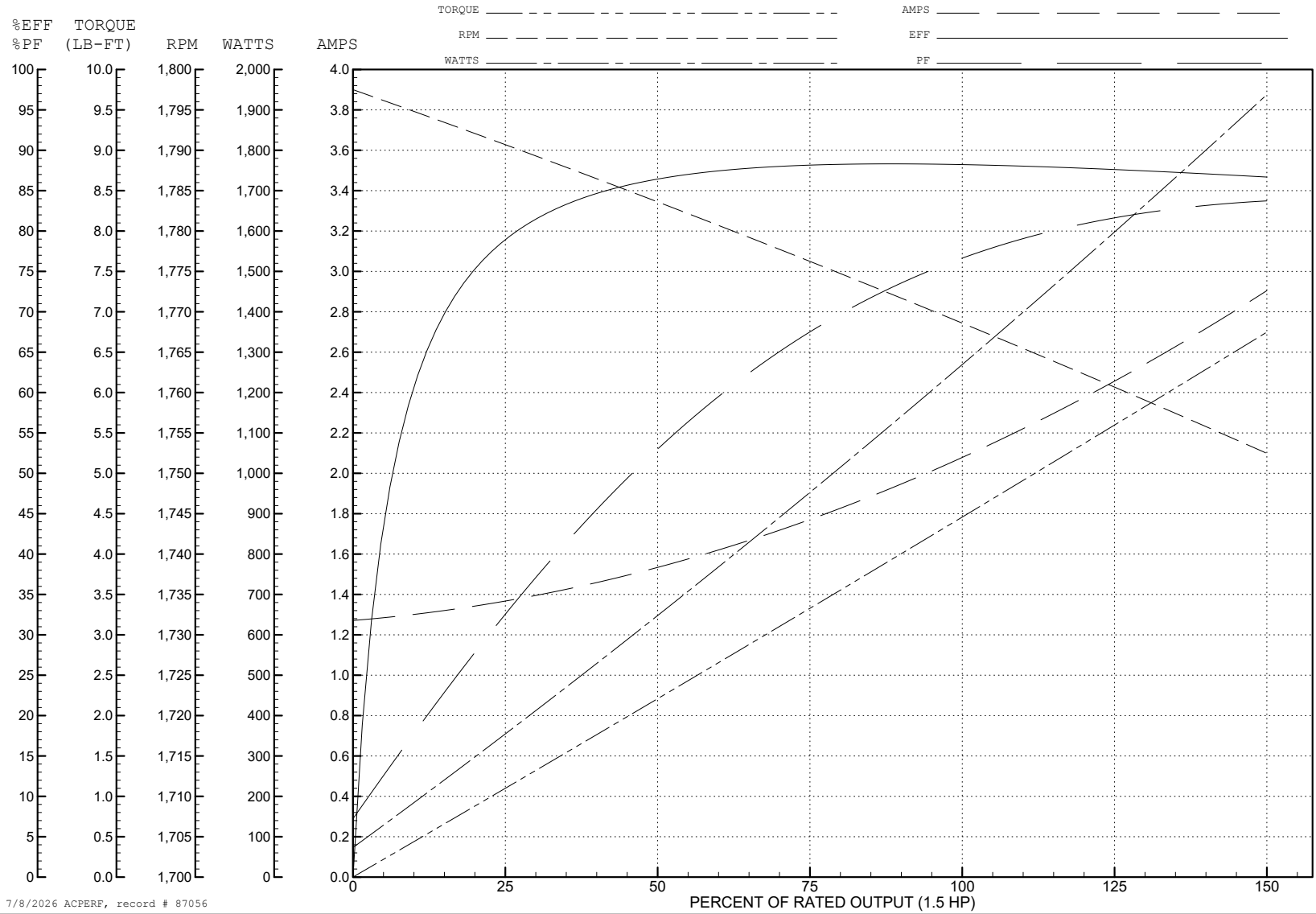
ABB Motors and Mechanical Inc.

WINDING # 35WGG178

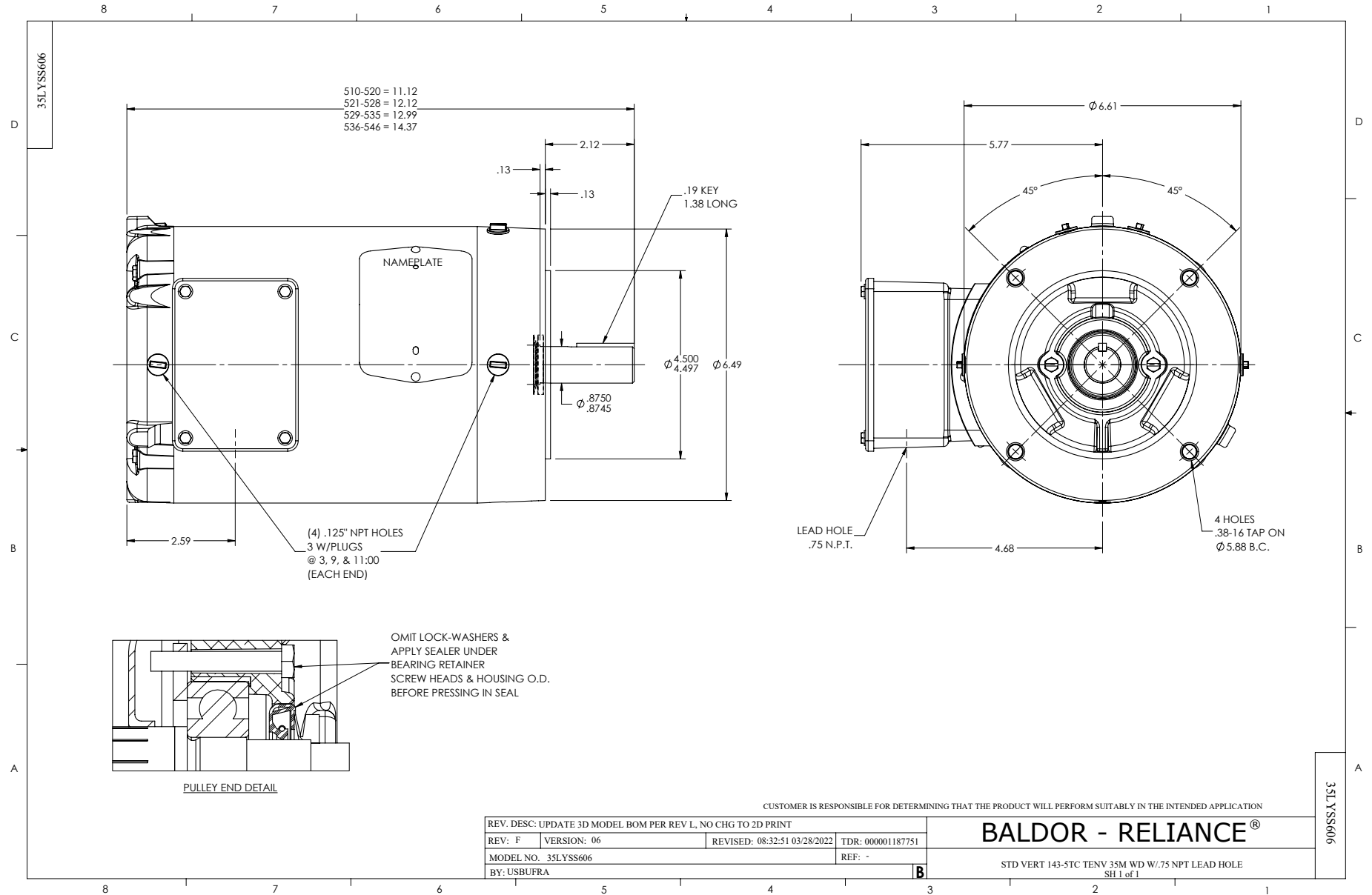
Typical performance - not guaranteed values.

1.5 HP 3 PH 60 HZ 1770 RPM 460 V 3530M

TORQUES (LB-FT): PO=21.02 PU=12.29 LR=14.9 LRA=21.32



7/8/2026 ACPERF, record # 87056



CD0005



LOW VOLTAGE
(2Y)



LINE

HIGH VOLTAGE
(1Y)



LINE

NOTES:

1. INTERCHANGE ANY TWO LINE LEADS TO REVERSE ROTATION.
2. OPTIONAL THERMOSTATS ARE PROVIDED WHEN SPECIFIED.
3. ACTUAL NUMBER OF INTERNAL PARALLEL CIRCUITS MAY BE A MULTIPLE OF THOSE SHOWN ABOVE.
4. LEAD COLORS ARE OPTIONAL. LEADS MUST ALWAYS BE NUMBERED AS SHOWN.

CD0005

REV. DESC: REVISE TO SHOW OPTIONAL COLORS

REV. LTR: E BY: JLP REVISED: 01/19/99 10:15 TDR: 0171435

500000

FILE: AAA00005140

MDL: -

MTL: -

BALDOR ELECTRIC Co.

3PH, DV, 9 LEADS