

ABB BALDOR RELIANCE III

Customer information packet

VEUHM3615T

5HP, 1755RPM, 3PH, 60HZ, 184TC, 3642M, TEFC, F1

Class - None

Division - Not Applicable

Specifications

| | |
|---------------------------------------|---|
| Enclosure | TEFC |
| Frame | 184TC |
| Frame Material | Steel |
| Frequency | 60.00 Hz |
| Haz Area Class and Group | None |
| Haz Area Division | Not Applicable |
| Motor Letter Type | Three Phase |
| Output @ Frequency | 5.000 HP @ 60 HZ |
| Phase | 3 |
| Synchronous Speed @ Frequency | 1800 RPM @ 60 HZ |
| Voltage @ Frequency | 460.0 V @ 60 HZ 230.0 V @ 60 HZ |
| Agency Approvals | CE CSA CSA EEV NEMA PREMIUM UR WEEE |
| Ambient Temperature | 40 °C |
| Auxiliary Box | NO AUXILLARY BOX |
| Auxiliary Box Lead Termination | None |
| Base Indicator | No Mounting |
| Bearing Grease Type | Polyrex EM (-20F +300F) |
| Blower | None |
| Current @ Voltage | 6.700 A @ 460.0 V 14.000 A @ 208.0 V 13.400 A @ 230.0 V |
| Design Code | B |
| Drip Cover | No Drip Cover |
| Duty Rating | CONT |
| Efficiency @ 100% Load | 89.5 % |
| Electrically Isolated Bearing | Not Electrically Isolated |

Part Detail

| | |
|---------------------|------------|
| Revision | H |
| Type | AC |
| Mech. spec. | 36A003 |
| Base | |
| Status | PRD/A |
| Elec. spec. | 36WGQ032 |
| Layout | 36LYA003 |
| Eff. date | 05-21-2025 |
| CD Diagram | CD0005 |
| Poles | 04 |
| Leads | 9#16 |
| Proprietary | False |
| Created date | 12-03-2020 |

| | |
|--------------------------------------|-----------------------|
| Feedback Device | NO FEEDBACK |
| Front Shaft Indicator | None |
| Heater Indicator | No Heater |
| High Voltage Full Load Amps | 6.7 a |
| Insulation Class | F |
| Inverter Code | Inverter Ready |
| IP Rating | NONE |
| KVA Code | J |
| Lifting Lugs | Standard Lifting Lugs |
| Locked Bearing Indicator | Locked Bearing |
| Motor Lead Quantity/Wire Size | 9 @ 16 AWG |
| Motor Lead Termination | Flying Leads |
| Motor Standards | NEMA |
| Motor Type | 3642M |
| Mounting Arrangement | F1 |
| Number of Poles | 4 |
| Overall Length | 18.04 IN |
| Power Factor | 78 |
| Product Family | General Purpose |
| Pulley End Bearing Type | Ball |
| Pulley Face Code | C-Face |
| Pulley Shaft Indicator | Standard |
| Rodent Screen | None |
| RoHS Status | ROHS COMPLIANT |
| Service Factor | 1.15 |
| Shaft Diameter | 1.125 IN |
| Shaft Ground Indicator | No Shaft Grounding |
| Shaft Rotation | Reversible |
| Shaft Slinger Indicator | No Slinger |
| Speed | 1755 rpm |
| Speed Code | Single Speed |
| Starting Method | Direct on line |
| Thermal Device - Bearing | None |
| Thermal Device - Winding | None |

Vibration Sensor Indicator

No Vibration Sensor

Winding Thermal 1

None

Winding Thermal 2

None

Nameplate

| NP2934L | |
|-----------------------|---|
| CAT.NO. | VEUHM3615T |
| SPEC. | 36A003Q032G1 |
| HP | 5/3.73KW |
| VOLTS | 230/460 |
| AMP | 13.4/6.7 IP44 IC411 43KG |
| R.P.M. (1/MIN) | 1755 |
| FRAME | 184TC HZ 60 PH 3 |
| SER.F. | 1.15 CODE J DES B CL F |
| NEMA-NOM-EFF | 89.5 PF 78 |
| RATING | 40C AMB-S1 CONT |
| CC | 010A |
| DE | 6206 ODE 6205 |
| ENCL | TEFC SN |
| | IE3-90.1(75%)89.4(50%) |

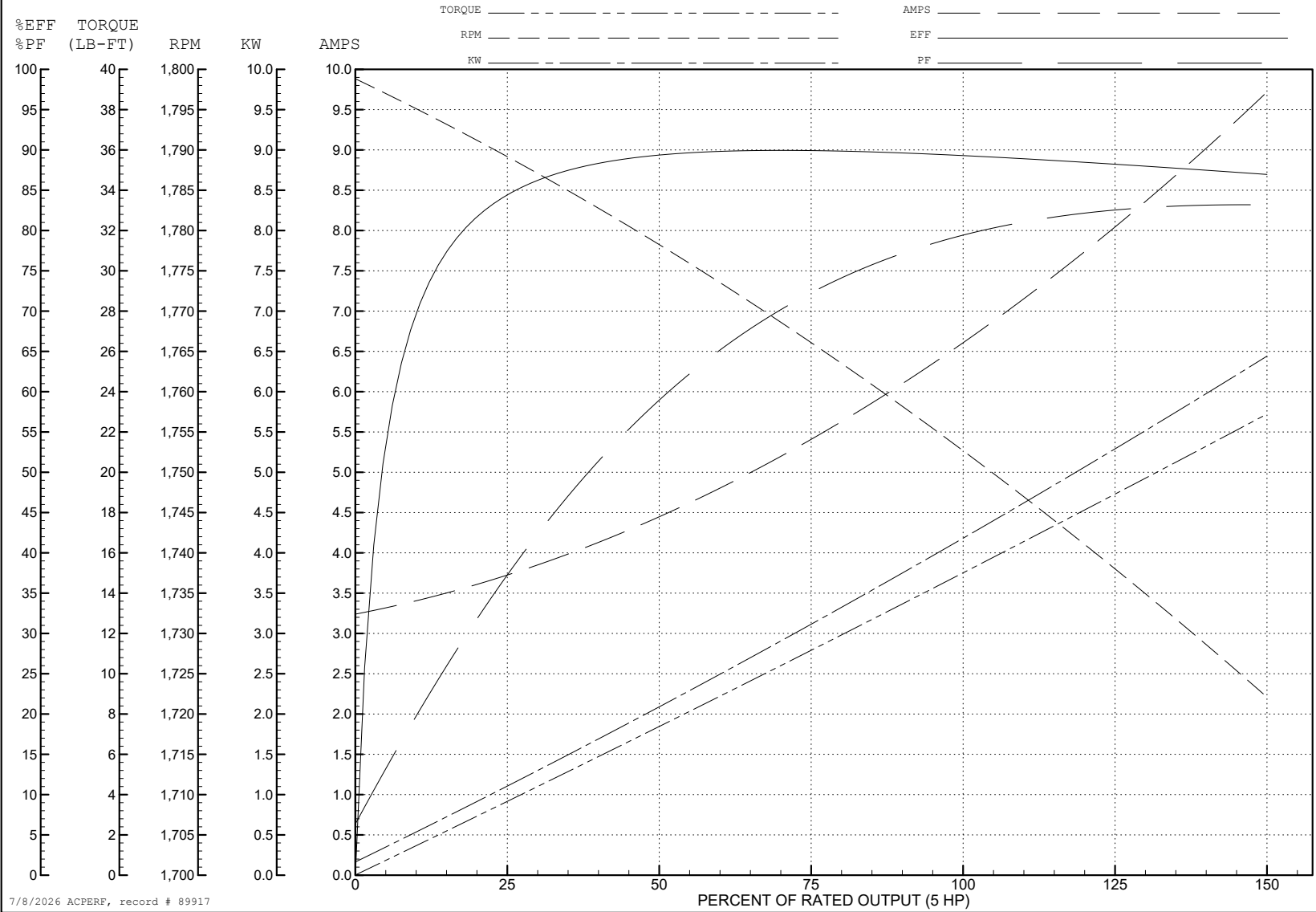
ABB Motors and Mechanical Inc.

WINDING # 36WGQ032

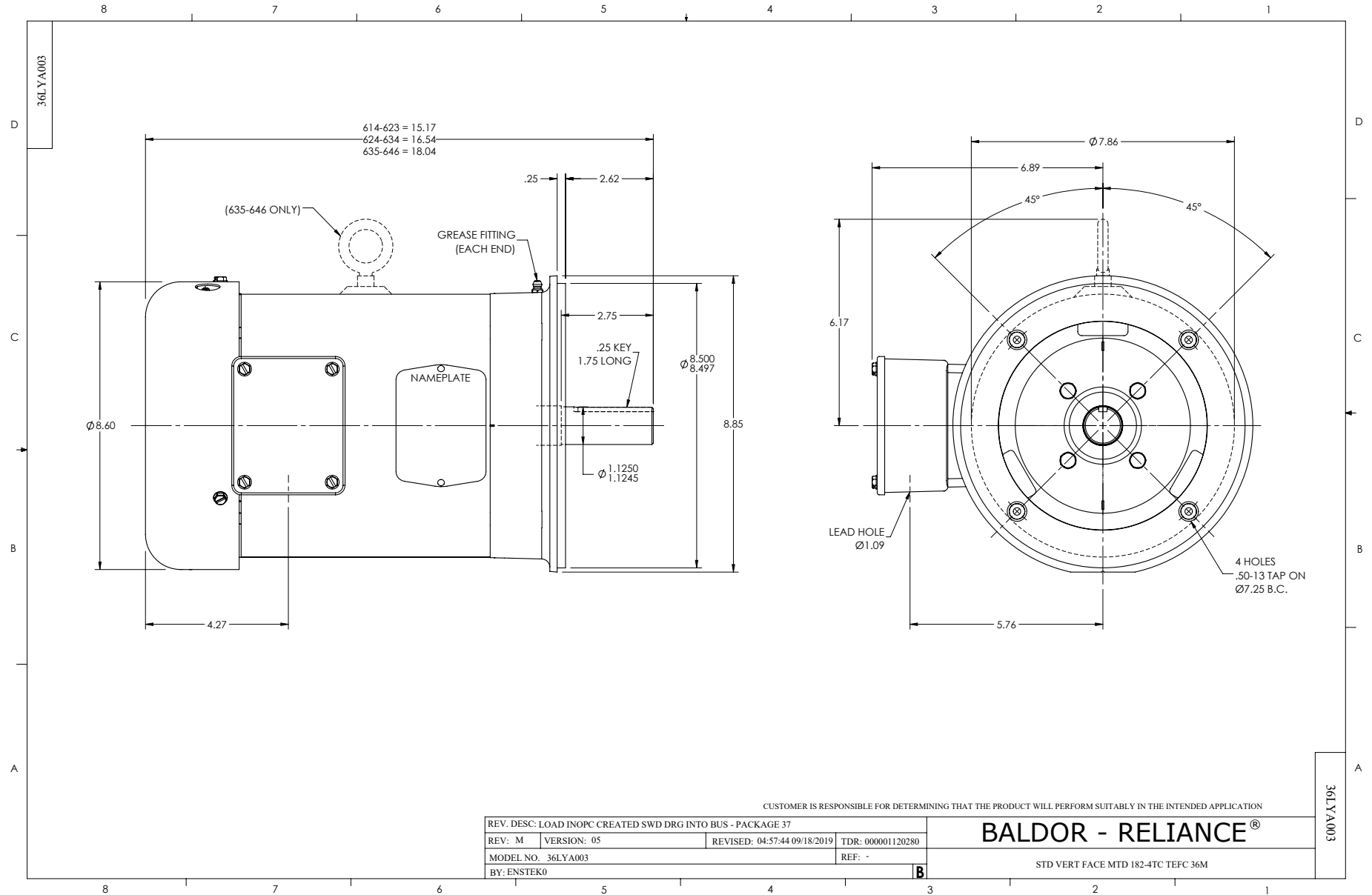
5 HP 3 PH 60 HZ 1755 RPM 460 V 3642M

Typical performance - not guaranteed values.

TORQUES (LB-FT): PO=53.1 PU=23.4 LR=34.7 LRA=49.8



7/8/2026 ACPERF, record # 89917



CUSTOMER IS RESPONSIBLE FOR DETERMINING THAT THE PRODUCT WILL PERFORM SUITABLY IN THE INTENDED APPLICATION

| | | | |
|---|-------------|------------------------------|-------------------|
| REV. DESC: LOAD INOPC CREATED SWD DRG INTO BUS - PACKAGE 37 | | | |
| REV: M | VERSION: 05 | REVISED: 04:57:44 09/18/2019 | TDR: 000001120280 |
| MODEL NO. 36LYA003 | | REF: - | |
| BY: ENSTEK0 | | | |

BALDOR - RELIANCE®

STD VERT FACE MTD 182-4TC TEFC 36M

36LYA003

CD0005



LOW VOLTAGE
(2Y)



LINE

HIGH VOLTAGE
(1Y)



LINE

NOTES:

1. INTERCHANGE ANY TWO LINE LEADS TO REVERSE ROTATION.
2. OPTIONAL THERMOSTATS ARE PROVIDED WHEN SPECIFIED.
3. ACTUAL NUMBER OF INTERNAL PARALLEL CIRCUITS MAY BE A MULTIPLE OF THOSE SHOWN ABOVE.
4. LEAD COLORS ARE OPTIONAL. LEADS MUST ALWAYS BE NUMBERED AS SHOWN.

CD0005

REV. DESC: REVISE TO SHOW OPTIONAL COLORS

REV. LTR: E BY: JLP REVISED: 01/19/99 10:15 TDR: 0171435

500000

FILE: AAA00005140

MDL: -

MTL: -

BALDOR ELECTRIC Co.

3PH, DV, 9 LEADS