

**BALDOR • RELIANCE**

---

# Customer information packet

## VEUHM3558

2 /1.5KWHP, 1750RPM, 3PH, 60HZ, 56C, 3526M, TE

Class - None

Division - Not Applicable

## Specifications

|                                |   |
|--------------------------------|---|
| Enclosure                      | TEFC  |
| Frame                          | 56C   |
| Frame Material                 | Steel   |
| Frequency                      | 60.00 Hz  |
| Haz Area Class and Group       | None  |
| Haz Area Division              | Not Applicable  |
| Motor Letter Type              | Three Phase   |
| Output @ Frequency             | 2.000 HP @ 60 HZ  |
| Phase                          | 3   |
| Synchronous Speed @ Frequency  | 1800 RPM @ 60 HZ  |
| Voltage @ Frequency            | 460.0 V @ 60 HZ<br>230.0 V @ 60 HZ                          |
| Agency Approvals               | CE<br>CURUSEEV<br>NEMA PREMIUM<br>UKCA<br>WEEE              |
| Ambient Temperature            | 40 °C   |
| Auxiliary Box                  | NO AUXILLARY BOX  |
| Auxiliary Box Lead Termination | None  |
| Base Indicator                 | No Mounting   |
| Bearing Grease Type            | Polyrex EM (-20F +300F)                                     |
| Blower                         | None  |
| Current @ Voltage              | 5.800 A @ 208.0 V<br>5.200 A @ 230.0 V<br>2.600 A @ 460.0 V |
| Design Code                    | B   |
| Drip Cover                     | No Drip Cover   |
| Duty Rating                    | CONT  |
| Efficiency @ 100% Load         | 86.5 %  |
| Electrically Isolated Bearing  | Not Electrically Isolated                                   |
| Feedback Device                | NO FEEDBACK   |

## Part detail

|              |            |
|--------------|------------|
| Revision     | -          |
| Type         | AC         |
| Mech. spec.  | 35X042     |
| Base         |            |
| Status       | PRD/A      |
| Elec. spec.  | 35WGZ165   |
| Layout       | 35LYX042   |
| Eff. date    | 02-19-2026 |
| CD Diagram   | CD0005     |
| Poles        | 04         |
| Leads        | 9#18 Y     |
| Proprietary  | False      |
| Created date | 11-04-2025 |

|                               |                     |
|-------------------------------|---------------------|
| Front Shaft Indicator         | None                |
| Heater Indicator              | No Heater           |
| High Voltage Full Load Amps   | 2.6 a               |
| Insulation Class              | F                   |
| Inverter Code                 | Inverter Ready      |
| KVA Code                      | K                   |
| Lifting Lugs                  | No Lifting Lugs     |
| Locked Bearing Indicator      | Locked Bearing      |
| Motor Lead Quantity/Wire Size | 9 @ 18 AWG          |
| Motor Lead Termination        | Flying Leads        |
| Motor Standards               | NEMA                |
| Motor Type                    | 3526M               |
| Mounting Arrangement          | F3                  |
| Number of Poles               | 4                   |
| Overall Length                | 13.23 IN            |
| Power Factor                  | 82                  |
| Product Family                | General Purpose     |
| Pulley End Bearing Type       | Ball                |
| Pulley Face Code              | C-Face              |
| Pulley Shaft Indicator        | Standard            |
| Rodent Screen                 | None                |
| Service Factor                | 1.15                |
| Shaft Diameter                | 0.625 IN            |
| Shaft Ground Indicator        | No Shaft Grounding  |
| Shaft Rotation                | Reversible          |
| Shaft Slinger Indicator       | No Slinger          |
| Speed                         | 1750 rpm            |
| Speed Code                    | Single Speed        |
| Starting Method               | Direct on line      |
| Thermal Device - Bearing      | None                |
| Thermal Device - Winding      | None                |
| Vibration Sensor Indicator    | No Vibration Sensor |
| Winding Thermal 1             | None                |
| Winding Thermal 2             | None                |

**Nameplate**

| <b>NP2934L</b>              |              |             |      |            |   |           |   |
|-----------------------------|--------------|-------------|------|------------|---|-----------|---|
| <b>CAT.NO.</b>              | VEUHM3558    |             |      |            |   |           |   |
| <b>SPEC.</b>                | 35X042Z165G1 |             |      |            |   |           |   |
| <b>HP</b>                   | 2 /1.5KW     |             |      |            |   |           |   |
| <b>VOLTS</b>                | 230/460      |             |      |            |   |           |   |
| <b>AMP</b>                  | 5.2/2.6      |             |      |            |   |           |   |
| <b>R.P.M. (1/MIN)</b>       | 1750         |             |      |            |   |           |   |
| <b>FRAME</b>                | 56C          | <b>HZ</b>   | 60   | <b>PH</b>  | 3 |           |   |
| <b>SER.F.</b>               | 1.15         | <b>CODE</b> | K    | <b>DES</b> | B | <b>CL</b> | F |
| <b>NEMA-NOM-EFF</b>         | 86.5         | <b>PF</b>   | 82   |            |   |           |   |
| <b>RATING</b>               | 40C AMB-CONT |             |      |            |   |           |   |
| <b>CC</b>                   | 010A         | IC411 21KG  |      |            |   |           |   |
| <b>DE</b>                   | 6205         | <b>ODE</b>  | 6203 |            |   |           |   |
| <b>ENCL</b>                 | TEFC         | <b>SN</b>   |      |            |   |           |   |
| IP44 IE3-87.6(75%)86.5(50%) |              |             |      |            |   |           |   |

**AC Induction Motor Performance Data**

Record # 114535

Typical performance - not guaranteed values

| <b>Winding:</b> 35WGZ165-R001 |              | <b>Type:</b> 3526M  |  | <b>Enclosure:</b> TEFC     |            |
|-------------------------------|--------------|---------------------|--|----------------------------|------------|
| <b>Nameplate Data</b>         |              |                     | <b>460 V, 60 Hz:<br/>High Voltage Connection</b> |                            |            |
| <b>Rated Output (HP)</b>      | 2            |                     | <b>Full Load Torque</b>                          | 5.979 LB-FT                |            |
| <b>Volts</b>                  | 230/460      |                     | <b>Start Configuration</b>                       | direct on line             |            |
| <b>Full Load Amps</b>         | 5.2/2.6      |                     | <b>Breakdown Torque</b>                          | 18.4 LB-FT                 |            |
| <b>R.P.M.</b>                 | 1750         |                     | <b>Pull-up Torque</b>                            | 13.7 LB-FT                 |            |
| <b>Hz</b>                     | 60           | <b>Phase</b>        | 3  | <b>Locked-rotor Torque</b> | 14.5 LB-FT |
| <b>NEMA Design Code</b>       | B            |                     | <b>KVA Code</b>                                  | K                          |            |
| <b>Service Factor (S.F.)</b>  | 1.15         |                     | <b>Starting Current</b>                          | 17.9 A                     |            |
| <b>NEMA Nom. Eff.</b>         | 86.5         | <b>Power Factor</b> | 82   | <b>No-load Current</b>     | 1.24 A     |
| <b>Rating - Duty</b>          | 40C AMB-CONT |                     | <b>Line-line Res. @ 25°C</b>                     | 10.857 Ω                   |            |
| <b>S.F. Amps</b>              | 6/3          |                     | <b>Temp. Rise @ Rated Load</b>                   | 59°C                       |            |
|                               |              |                     | <b>Temp. Rise @ S.F. Load</b>                    | 75°C                       |            |
|                               |              |                     | <b>Locked-rotor Power Factor</b>                 | 59.3                       |            |

**Load Characteristics 460 V, 60 Hz, 2 HP**

| <b>% of Rated Load</b> | <b>25</b> | <b>50</b> | <b>75</b> | <b>100</b> | <b>125</b> | <b>150</b> | <b>S.F.</b> |
|------------------------|-----------|-----------|-----------|------------|------------|------------|-------------|
| <b>Power Factor</b>    | 42        | 64        | 76        | 82         | 86         | 87         | 84          |
| <b>Efficiency</b>      | 82.7      | 87.6      | 87.8      | 86.6       | 84.6       | 82         | 85.4        |
| <b>Speed</b>           | 1788.4    | 1776.9    | 1763.5    | 1748.9     | 1731.7     | 1711.8     | 1739        |
| <b>Line amperes</b>    | 1.35      | 1.65      | 2.09      | 2.61       | 3.21       | 3.91       | 2.97        |

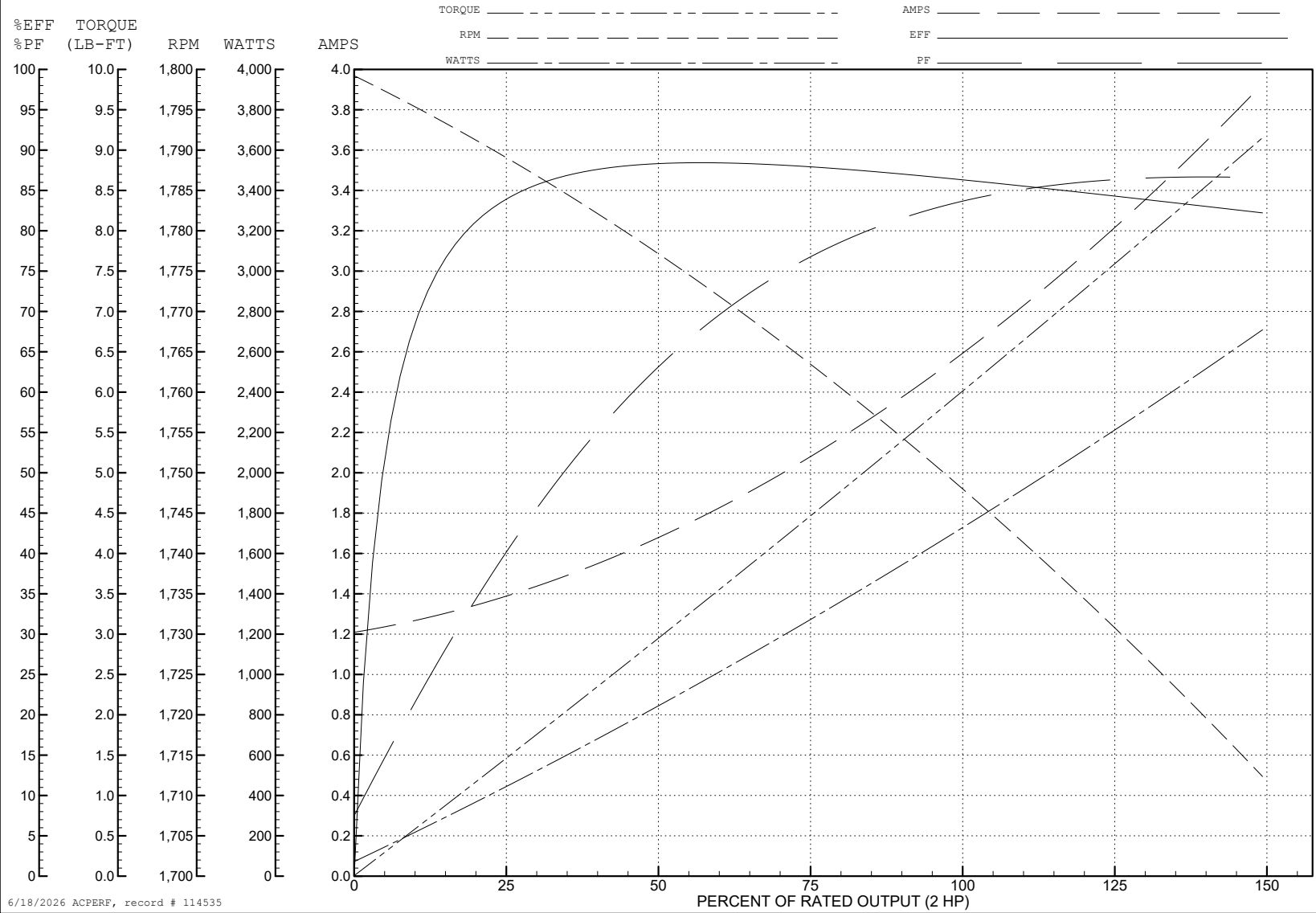
ABB Motors and Mechanical Inc.

WINDING # 35WGZ165

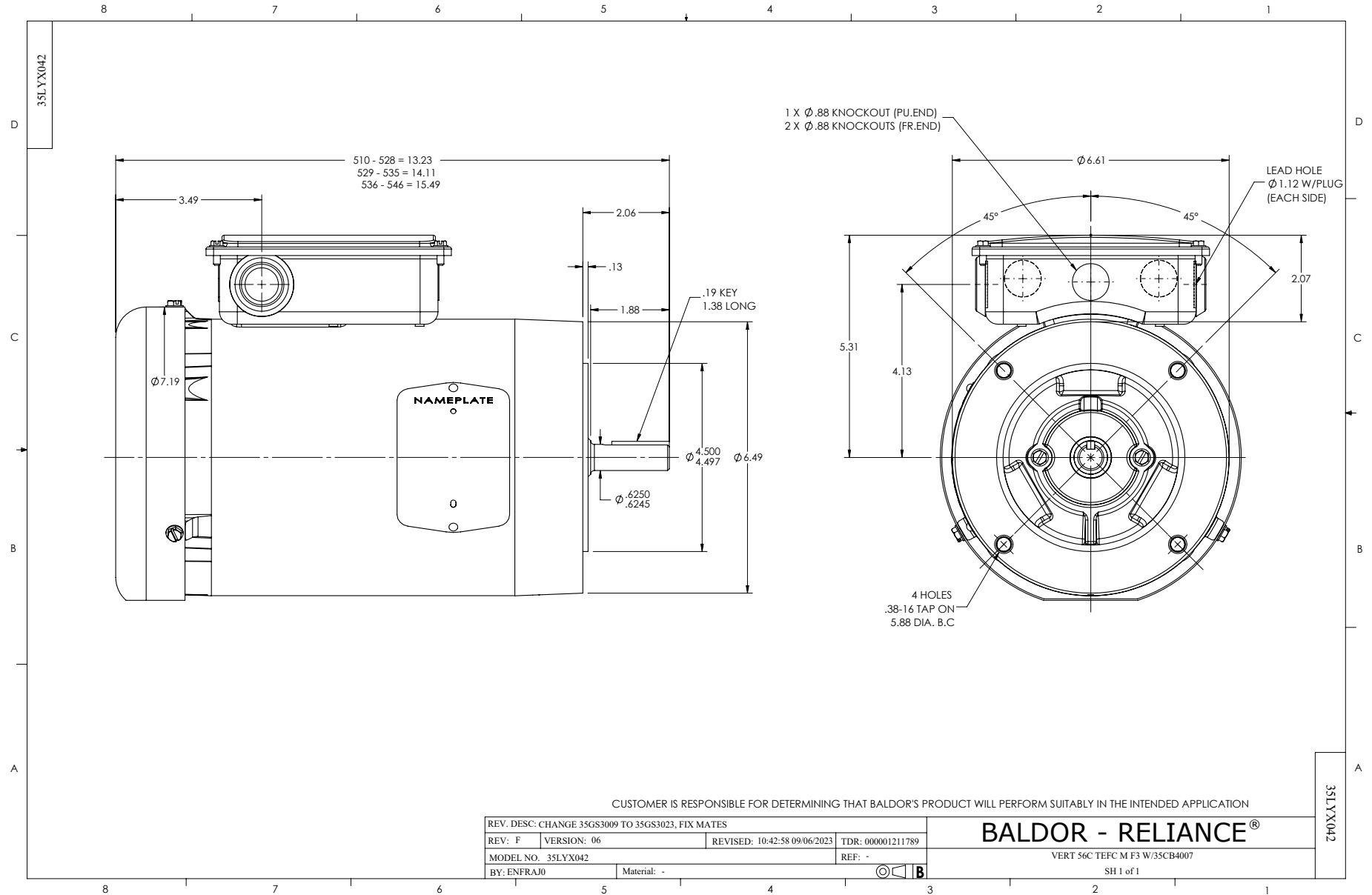
2 HP 3 PH 60 HZ 1750 RPM 460 V 3526M

Typical performance - not guaranteed values.

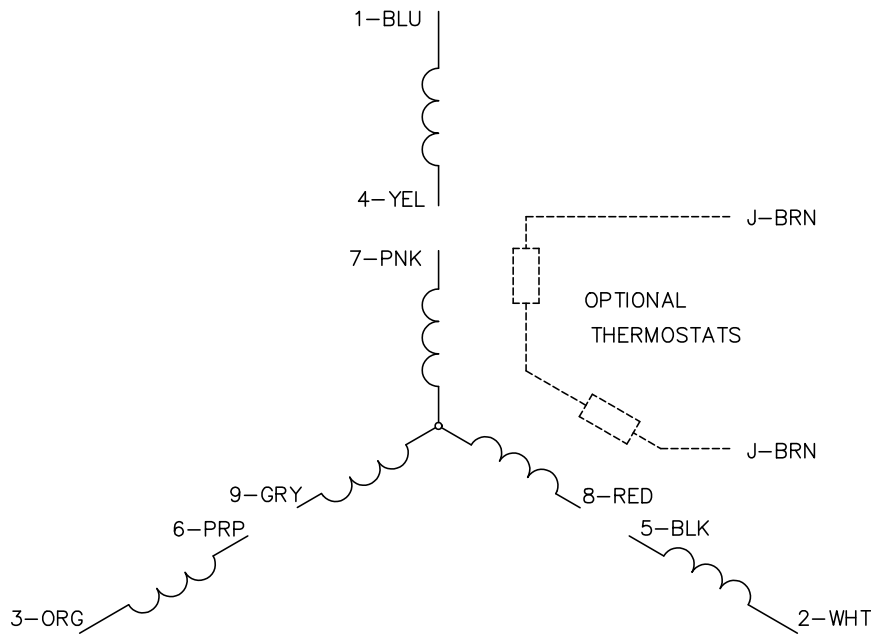
TORQUES (LB-FT): PO=18.4 PU=13.7 LR=14.5 LRA=17.9



6/18/2026 ACPERF, record # 114535



CD0005



LOW VOLTAGE  
(2Y)



LINE

HIGH VOLTAGE  
(1Y)



LINE

NOTES:

1. INTERCHANGE ANY TWO LINE LEADS TO REVERSE ROTATION.
2. OPTIONAL THERMOSTATS ARE PROVIDED WHEN SPECIFIED.
3. ACTUAL NUMBER OF INTERNAL PARALLEL CIRCUITS MAY BE A MULTIPLE OF THOSE SHOWN ABOVE.
4. LEAD COLORS ARE OPTIONAL. LEADS MUST ALWAYS BE NUMBERED AS SHOWN.

CD0005

|   |         |                         |              |
|---|---------|-------------------------|--------------|
| REV. DESC: REVISE TO SHOW OPTIONAL COLORS |         |                         |              |
| REV. LTR: E                               | BY: JLP | REVISED: 01/19/99 10:15 | TDR: 0171435 |
| S00000                                    |         | FILE: AAA00005140       | MDL: -       |
|   |         | MTL: -                  |              |

**BALDOR ELECTRIC Co.**

3PH, DV, 9 LEADS