

**BALDOR • RELIANCE**

---

# Customer information packet

## VEM3711T

10HP, 3505RPM, 3PH, 60HZ, 215TC, 3732M, TEFC, F

Class - None

Division - Not Applicable

Copyright © All product information within this document is subject to ABB Motors and Mechanical Inc. copyright © protection, unless otherwise noted.

4/1/2023 1:48:41 AM

## Specifications

Enclosure	TEFC
Frame	215TC
Frame Material	Steel
Frequency	60.00 Hz
Motor Letter Type	Three Phase
Output @ Frequency	10.000 HP @ 60 HZ
Phase	3
Synchronous Speed @ Frequency	3600 RPM @ 60 HZ
Voltage @ Frequency	230.0 V @ 60 HZ 208.0 V @ 60 HZ 460.0 V @ 60 HZ
XP Class and Group	None
XP Division	Not Applicable
Agency Approvals	CSA EEV NEMA PREMIUM UR CSA
Ambient Temperature	40 °C
Auxillary Box	No Auxillary Box
Auxillary Box Lead Termination	None
Base Indicator	No Mounting
Bearing Grease Type	Polyrex EM (-20F +300F)
Blower	None
Current @ Voltage	24.400 A @ 208.0 V 23.800 A @ 230.0 V 11.900 A @ 460.0 V
Design Code	A
Drip Cover	No Drip Cover
Duty Rating	CONT
Efficiency @ 100% Load	90.2 %
Electrically Isolated Bearing	Not Electrically Isolated
Feedback Device	NO FEEDBACK

## Part detail

Revision	A
Type	AC
Mech. spec.	37H329
Base	
Status	PRD/A
Elec. spec.	37WGL871
Layout	37LYH329
Eff. date	08-15-2022
CD Diagram	CD0005
Poles	02
Leads	9#14
Proprietary	False
Created date	01-04-2021

Front Shaft Indicator	None
Heater Indicator	No Heater
High Voltage Full Load Amps	11.9 a
Insulation Class	F
Inverter Code	Inverter Ready
KVA Code	J
Lifting Lugs	Standard Lifting Lugs
Locked Bearing Indicator	Locked Bearing
Motor Lead Quantity/Wire Size	9 @ 14 AWG
Motor Lead Termination	Flying Leads
Motor Standards	NEMA
Motor Type	3732M
Mounting Arrangement	F1
Number of Poles	2
Overall Length	18.63 IN
Power Factor	87
Product Family	General Purpose
Pulley End Bearing Type	Ball
Pulley Face Code	C-Face
Pulley Shaft Indicator	Standard
Rodent Screen	None
Service Factor	1.15
Shaft Diameter	1.375 IN
Shaft Ground Indicator	No Shaft Grounding
Shaft Rotation	Reversible
Shaft Slinger Indicator	No Slinger
Speed	3505 rpm
Speed Code	Single Speed
Starting Method	Direct on line
Thermal Device - Bearing	None
Thermal Device - Winding	None
Vibration Sensor Indicator	No Vibration Sensor
Winding Thermal 1	None
Winding Thermal 2	None

**Nameplate**

**NP3441LUA**

<b>CAT.NO.</b>	VEM3711T						
<b>SPEC</b>	37H329L871G1						
<b>HP</b>	10						
<b>VOLTS</b>	208-230/460						
<b>AMPS</b>	24.4-23.8/11.9						
<b>RPM</b>	3505						
<b>FRAME</b>	215TC	<b>HZ</b>	60	<b>PH</b>	3		
<b>SF</b>	1.15	<b>CODE</b>	J	<b>DES</b>	A	<b>CLASS</b>	F
<b>NEMA NOM. EFF</b>	90.2	<b>PF</b>	87				
<b>RATING</b>	40C AMB-CONT						
<b>CC</b>	010A	<b>USABLE AT 208V</b>					
<b>ENCL</b>	TEFC	<b>SER</b>					
<b>DE</b>	6307	<b>ODE</b>	6206				
<b>VPWM INVERTER READY</b>							
<b>CT6-60H(10:1)VT3-60H(20:1</b>	50HZ 10HP 190/380V 29.4/14.7A						SF1.0

**AC Induction Motor Performance Data**

Record # 86037

Preliminary Data Sheet

<b>Winding: 37WGL871-R001</b>		<b>Type: 3732M</b>		<b>Enclosure: TEFC</b>	
<b>Nameplate Data</b>			<b>460 V, 60 Hz: High Voltage Connection</b>		
<b>Rated Output (HP)</b>	10	<b>Full Load Torque</b>	15 LB-FT		
<b>Volts</b>	208-230/460	<b>Start Configuration</b>	direct on line		
<b>Full Load Amps</b>	24.4-23.8/11.9	<b>Breakdown Torque</b>	59.7 LB-FT		
<b>R.P.M.</b>	3505	<b>Pull-up Torque</b>	31.7 LB-FT		
<b>Hz</b>	60 <b>Phase</b>	3	<b>Locked-rotor Torque</b>	35 LB-FT	
<b>NEMA Design Code</b>	A <b>KVA Code</b>	J	<b>Starting Current</b>	95.5 A	
<b>Service Factor (S.F.)</b>	1.15	<b>No-load Current</b>	4.43 A		
<b>NEMA Nom. Eff.</b>	90.2 <b>Power Factor</b>	87	<b>Line-line Res. @ 25°C</b>	0.846 Ω	
<b>Rating - Duty</b>	40C AMB-CONT	<b>Temp. Rise @ Rated Load</b>	72°C		
<b>S.F. Amps</b>	27/13.5	<b>Temp. Rise @ S.F. Load</b>	94°C		
		<b>Locked-rotor Power Factor</b>	41.6		
		<b>Rotor inertia</b>	0.292 lb-ft <sup>2</sup>		

**Load Characteristics 460 V, 60 Hz, 10 HP**

<b>% of Rated Load</b>	<b>25</b>	<b>50</b>	<b>75</b>	<b>100</b>	<b>125</b>	<b>150</b>	<b>S.F.</b>
<b>Power Factor</b>	51	73	82	86	88	89	88
<b>Efficiency</b>	87	91.1	91.6	91	90	88.7	91.5
<b>Speed</b>	3576	3554	3530	3504	3477	3447	3488
<b>Line amperes</b>	5.26	7.07	9.36	11.9	14.8	17.8	13.6

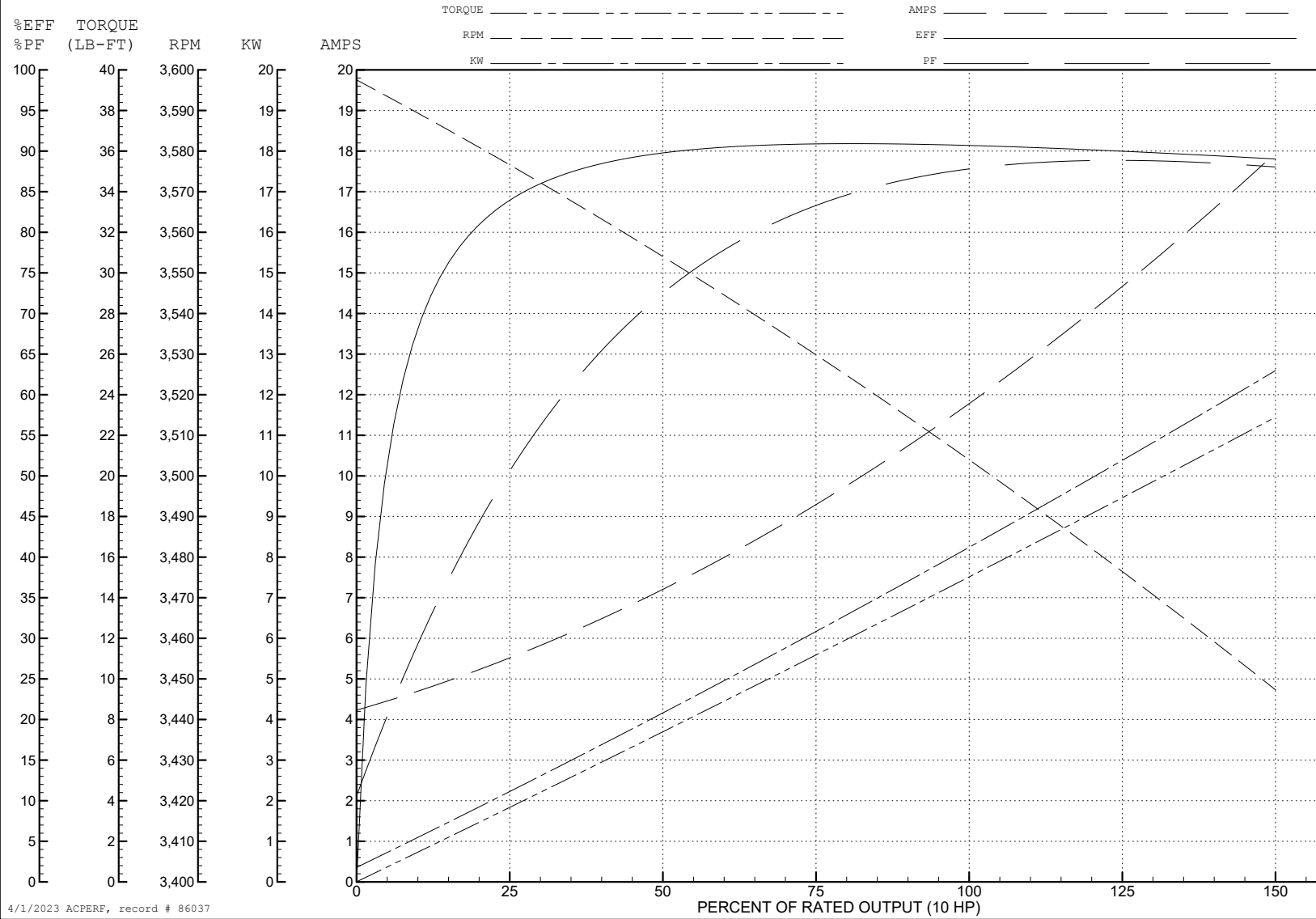
ABB Motors and Mechanical Inc.

WINDING # 37WGL871

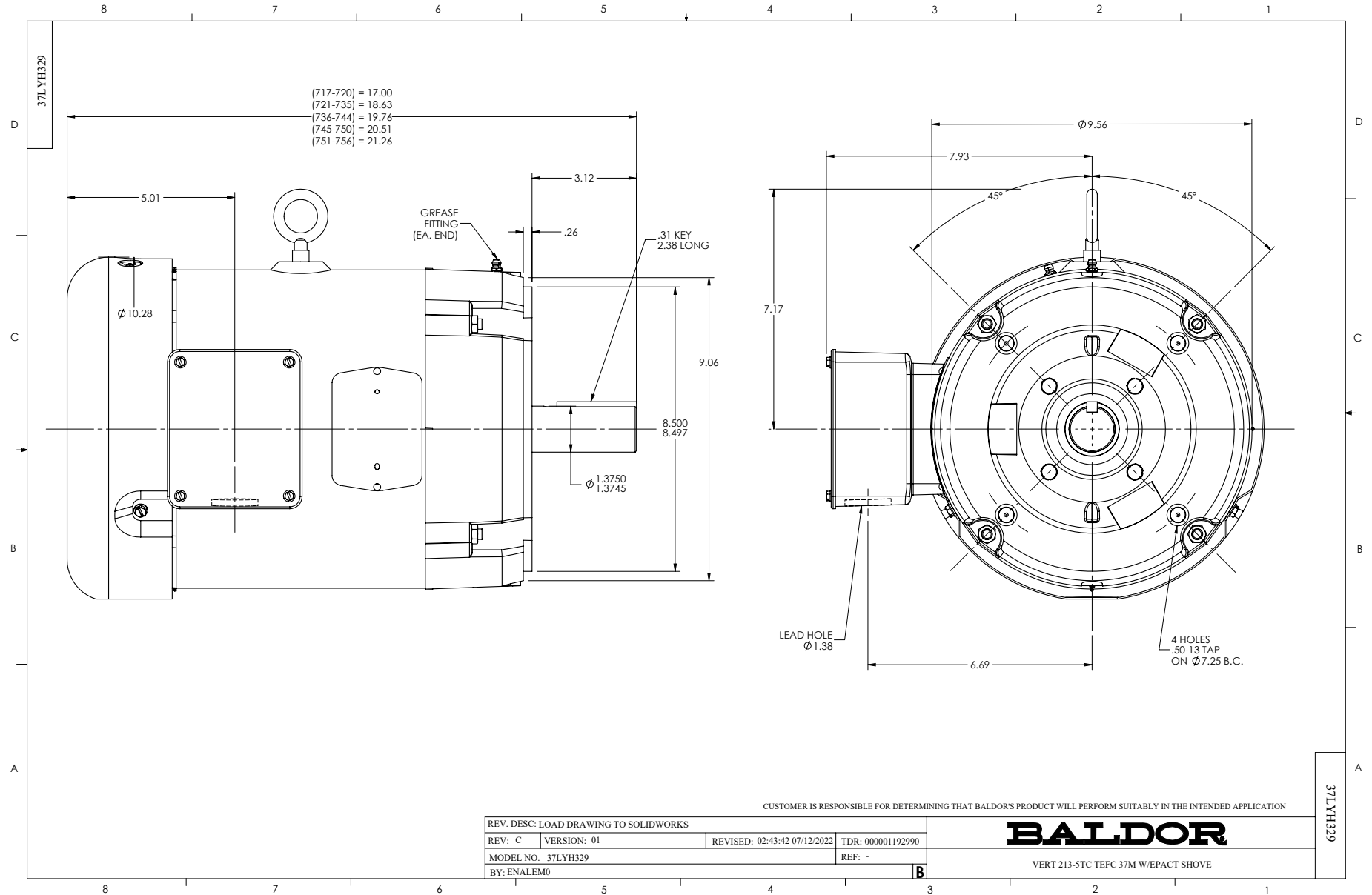
Typical performance - not guaranteed values.

10 HP 3 PH 60 HZ 3505 RPM 460 V 3732M

TORQUES (LB-FT): PO=59.7 PU=31.7 LR=35 LRA=95.5



4/1/2023 ACPERF, record # 86037



CD0005



LOW VOLTAGE  
(2Y)



LINE

HIGH VOLTAGE  
(1Y)



LINE

NOTES:

1. INTERCHANGE ANY TWO LINE LEADS TO REVERSE ROTATION.
2. OPTIONAL THERMOSTATS ARE PROVIDED WHEN SPECIFIED.
3. ACTUAL NUMBER OF INTERNAL PARALLEL CIRCUITS MAY BE A MULTIPLE OF THOSE SHOWN ABOVE.
4. LEAD COLORS ARE OPTIONAL. LEADS MUST ALWAYS BE NUMBERED AS SHOWN.

CD0005

REV. DESC: REVISE TO SHOW OPTIONAL COLORS			
REV. LTR: E	BY: JLP	REVISED: 01/19/99 10:15	TDR: 0171435
S00000		FILE: AAA00005140	MDL: -
		MTL: -	

**BALDOR ELECTRIC Co.**

3PH, DV, 9 LEADS