

BALDOR • RELIANCE

Customer information packet

VEM3215T

2HP, 1165RPM, 3PH, 60HZ, 184TC, 3636M, ODP, F1

Class - None

Division - Not Applicable

Specifications

Enclosure	ODP
Frame	184TC
Frame Material	Steel
Frequency	60.00 Hz
Haz Area Class and Group	None
Haz Area Division	Not Applicable
Motor Letter Type	Three Phase
Output @ Frequency	2.000 HP @ 60 HZ
Phase	3
Synchronous Speed @ Frequency	1200 RPM @ 60 HZ
Voltage @ Frequency	230.0 V @ 60 HZ 460.0 V @ 60 HZ
Agency Approvals	CSA EEV CURUSEEV NEMA PREMIUM NEMA_PREMIUM UR
Ambient Temperature	40 °C
Auxillary Box	No Auxillary Box
Auxillary Box Lead Termination	None
Base Indicator	No Mounting
Bearing Grease Type	Polyrex EM (-20F +300F)
Blower	None
Current @ Voltage	6.800 A @ 208.0 V 6.800 A @ 230.0 V 3.400 A @ 460.0 V
Design Code	B
Drip Cover	Drip Cover
Duty Rating	CONT
Efficiency @ 100% Load	87.5 %
Electrically Isolated Bearing	Not Electrically Isolated
Feedback Device	NO FEEDBACK

Part detail

Revision	J
Type	AC
Mech. spec.	36Q489
Base	
Status	PRD/A
Elec. spec.	36WGS947
Layout	36LYQ489
Eff. date	09-23-2024
CD Diagram	CD0005
Poles	06
Leads	9#16
Proprietary	False
Created date	05-05-2015

Front Face Code	Drip Cover Mounting
Front Shaft Indicator	None
Heater Indicator	No Heater
High Voltage Full Load Amps	3.4 a
Insulation Class	F
Inverter Code	Inverter Ready
KVA Code	L
Lifting Lugs	Standard Lifting Lugs
Locked Bearing Indicator	Locked Bearing
Motor Lead Exit	Ko Box
Motor Lead Quantity/Wire Size	9 @ 16 AWG
Motor Lead Termination	Flying Leads
Motor Standards	NEMA
Motor Type	3636M
Mounting Arrangement	F1
Number of Poles	6
Overall Length	18.03 IN
Power Factor	63
Product Family	General Purpose
Pulley End Bearing Type	Ball
Pulley Face Code	C-Face
Pulley Shaft Indicator	Standard
Rodent Screen	None
Service Factor	1.15
Shaft Diameter	1.125 IN
Shaft Extension Location	Pulley End
Shaft Ground Indicator	No Shaft Grounding
Shaft Rotation	Reversible
Shaft Slinger Indicator	No Slinger
Speed	1165 rpm
Speed Code	Single Speed
Starting Method	Direct on line
Thermal Device - Bearing	None
Thermal Device - Winding	None

Vibration Sensor Indicator	No Vibration Sensor
Winding Thermal 1	None
Winding Thermal 2	None

Nameplate

NP1259LUA									
CAT.NO.	VEM3215T								
SPEC.	36Q489S947G1								
HP	2								
VOLTS	230/460								
AMPS	6.8/3.4								
R.P.M.	1165								
FRAME	184TC	HZ	60	PH	3				
SER.F.	1.15	CODE	L	DES	B	CLASS	F		
NEMA NOM. EFF.	87.5	P.F.	63						
RATING	40C AMB-CONT								
CC	010A								
DE	6206	ODE	6205						
ENCL	ODP	SN							
USABLE AT	50HZ 2HP 190/380V 7.8/3.9A								SF1.0

AC Induction Motor Performance Data

Record # 53374

Typical performance - not guaranteed values

Winding: 36WGS947-R006		Type: 3636M		Enclosure: OPSB	
Nameplate Data			460 V, 60 Hz: High Voltage Connection		
Rated Output (HP)	2	Full Load Torque	9.01 LB-FT		
Volts	230/460	Start Configuration	direct on line		
Full Load Amps	6.8/3.4	Breakdown Torque	35.3 LB-FT		
R.P.M.	1165	Pull-up Torque	19.7 LB-FT		
Hz	60 Phase	3	Locked-rotor Torque	25.1 LB-FT	
NEMA Design Code	B KVA Code	L	Starting Current	23.9 A	
Service Factor (S.F.)		1.15	No-load Current	2.26 A	
NEMA Nom. Eff.	87.5 Power Factor	63	Line-line Res. @ 25°C	4.9075 Ω	
Rating - Duty		40C AMB-CONT	Temp. Rise @ Rated Load	24°C	
S.F. Amps			Temp. Rise @ S.F. Load	28°C	

Load Characteristics 460 V, 60 Hz, 2 HP

% of Rated Load	25	50	75	100	125	150	S.F.
Power Factor	27	43	55	62	68	72	66
Efficiency	77.9	85.5	87.6	88	87.6	86.8	87.8
Speed	1193.3	1187	1180.2	1173.2	1165.2	1155.9	1168
Line amperes	2.37	2.62	2.99	3.43	3.96	4.54	3.75

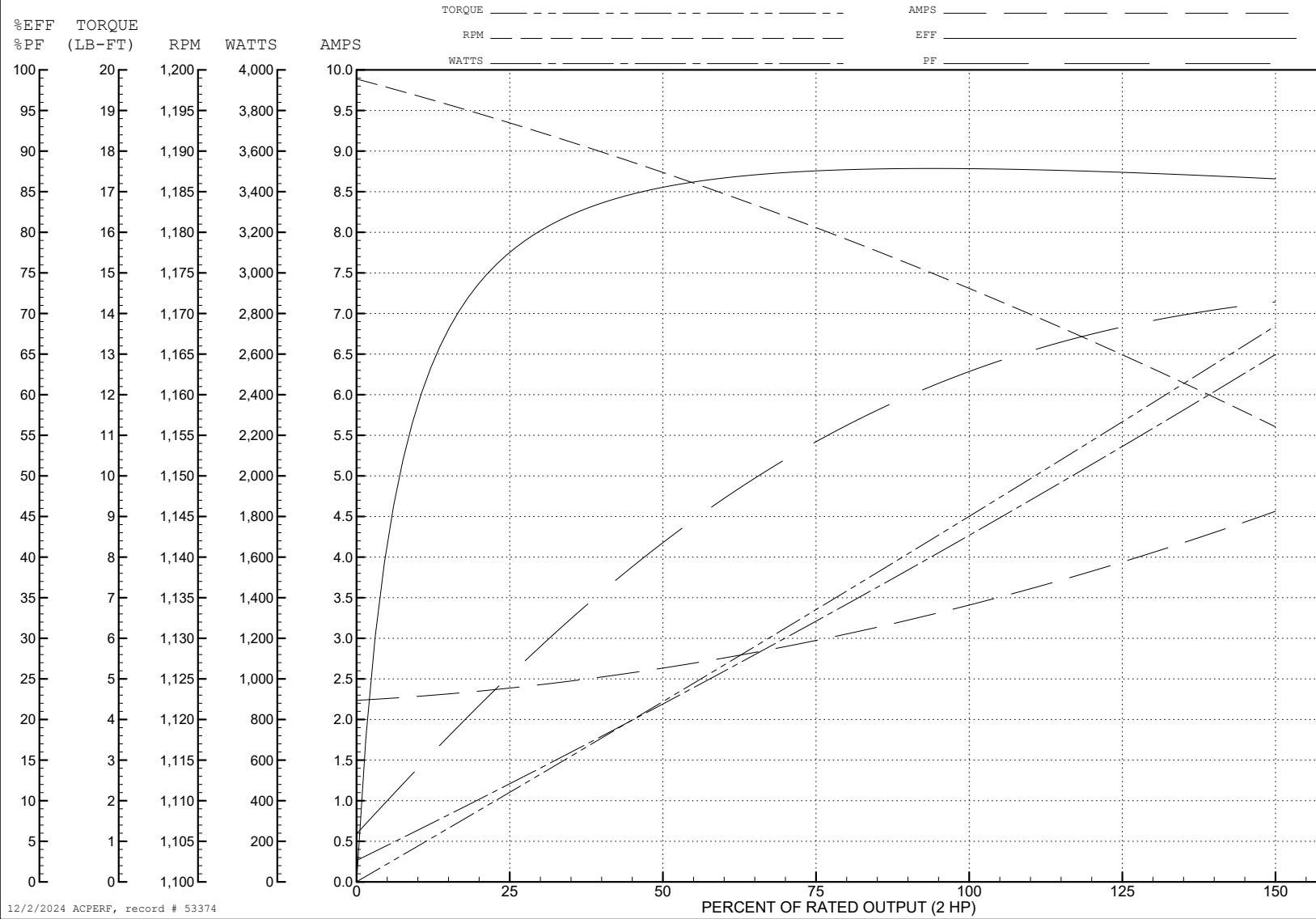
ABB Motors and Mechanical Inc.

WINDING # 36WGS947

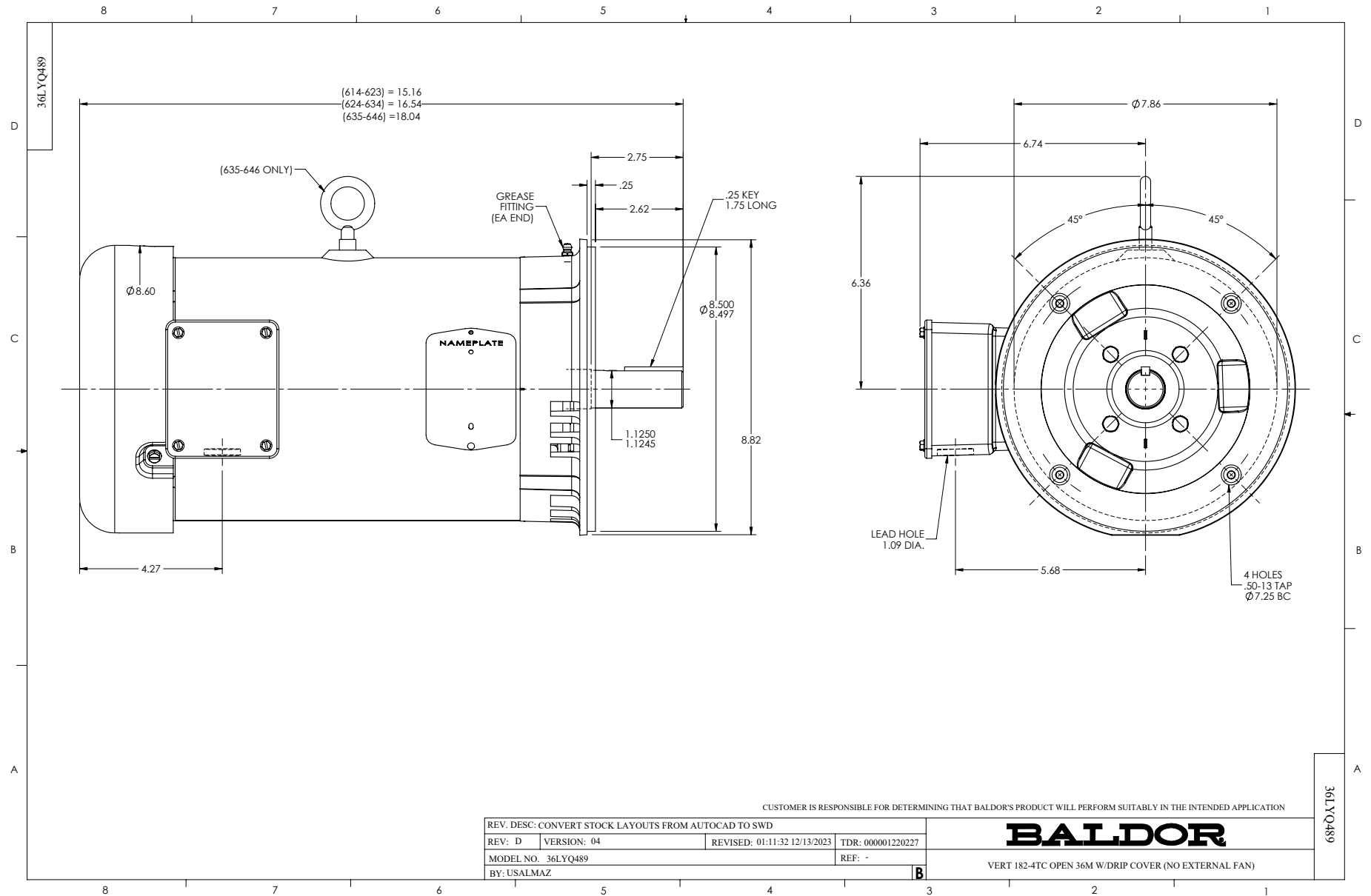
Typical performance - not guaranteed values.

2 HP 3 PH 60 HZ 1165 RPM 460 V 3636M

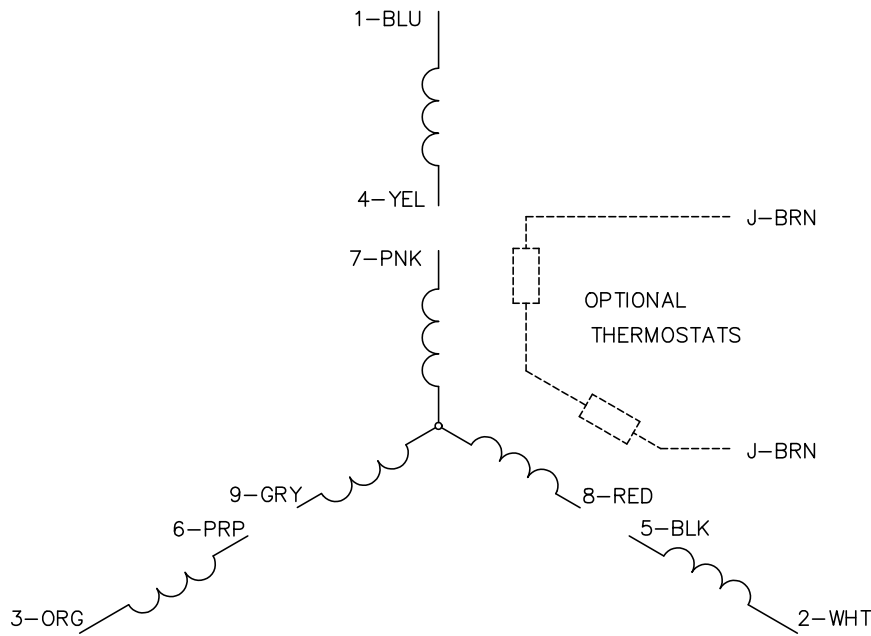
TORQUES (LB-FT): PO=35.3 PU=19.7 LR=25.1 LRA=23.9



12/2/2024 ACPERF, record # 53374



CD0005

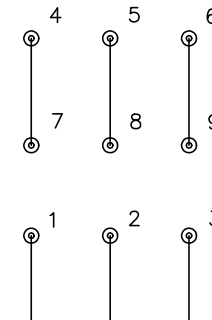


LOW VOLTAGE
(2Y)



LINE

HIGH VOLTAGE
(1Y)



LINE

NOTES:

1. INTERCHANGE ANY TWO LINE LEADS TO REVERSE ROTATION.
2. OPTIONAL THERMOSTATS ARE PROVIDED WHEN SPECIFIED.
3. ACTUAL NUMBER OF INTERNAL PARALLEL CIRCUITS MAY BE A MULTIPLE OF THOSE SHOWN ABOVE.
4. LEAD COLORS ARE OPTIONAL. LEADS MUST ALWAYS BE NUMBERED AS SHOWN.

CD0005

REV. DESC: REVISE TO SHOW OPTIONAL COLORS			
REV. LTR: E	BY: JLP	REVISED: 01/19/99 10:15	TDR: 0171435
S00000		FILE: AAA00005140	MDL: -
		MTL: -	

BALDOR ELECTRIC Co.

3PH, DV, 9 LEADS