

BALDOR • RELIANCE

Customer information packet

VEM31155

2HP, 3450RPM, 3PH, 60HZ, 56C, 3524M, OPEN, F1, N

Class - None

Division - Not Applicable

Copyright © All product information within this document is subject to ABB Motors and Mechanical Inc. copyright © protection, unless otherwise noted.

3/28/2023 7:27:13 AM

Specifications

Enclosure	OPEN
Frame	56C
Frame Material	Steel
Frequency	60.00 Hz
Motor Letter Type	Three Phase
Output @ Frequency	2.000 HP @ 60 HZ
Phase	3
Synchronous Speed @ Frequency	3600 RPM @ 60 HZ
Voltage @ Frequency	230.0 V @ 60 HZ 460.0 V @ 60 HZ
XP Class and Group	None
XP Division	Not Applicable
Agency Approvals	UR CSA
Ambient Temperature	40 °C
Auxillary Box	No Auxillary Box
Auxillary Box Lead Termination	None
Base Indicator	No Mounting
Bearing Grease Type	Polyrex EM (-20F +300F)
Blower	None
Current @ Voltage	2.600 A @ 460.0 V 5.200 A @ 230.0 V 5.600 A @ 208.0 V
Design Code	B
Drip Cover	Drip Cover
Duty Rating	CONT
Efficiency @ 100% Load	85.5 %
Electrically Isolated Bearing	Not Electrically Isolated
Feedback Device	NO FEEDBACK
Front Face Code	Standard
Front Shaft Indicator	None
Heater Indicator	No Heater

Part detail

Revision	L
Type	AC
Mech. spec.	35E4017
Base	
Status	PRD/A
Elec. spec.	35WGS254
Layout	35LYE4017
Eff. date	09-28-2022
CD Diagram	CD0005
Poles	02
Leads	9#18
Proprietary	False
Created date	09-30-2014

High Voltage Full Load Amps	2.6 a
Insulation Class	F
Inverter Code	Inverter Ready
KVA Code	K
Lifting Lugs	No Lifting Lugs
Locked Bearing Indicator	Locked Bearing
Motor Lead Exit	Ko Box
Motor Lead Quantity/Wire Size	9 @ 18 AWG
Motor Lead Termination	Flying Leads
Motor Standards	NEMA
Motor Type	3524M
Mounting Arrangement	F1
Number of Poles	2
Overall Length	13.23 IN
Power Factor	85
Product Family	General Purpose
Pulley End Bearing Type	Ball
Pulley Face Code	C-Face
Pulley Shaft Indicator	Standard
Rodent Screen	None
RoHS Status	ROHS COMPLIANT
Service Factor	1.15
Shaft Diameter	0.625 IN
Shaft Extension Location	Pulley End
Shaft Ground Indicator	No Shaft Grounding
Shaft Rotation	Reversible
Shaft Slinger Indicator	No Slinger
Speed	3450 rpm
Speed Code	Single Speed
Starting Method	Direct on line
Thermal Device - Bearing	None
Thermal Device - Winding	None
Vibration Sensor Indicator	No Vibration Sensor
Winding Thermal 1	None

Winding Thermal 2

None

Nameplate

NP3155LUA										
CAT.NO.	VEM31155									
SPEC.	35E4017S254G1									
HP	2									
VOLTS	230/460									
AMPS	5.2/2.6									
RPM	3450									
FRAME	56C		HZ	60		PH	3			
SF	1.15	CODE	K	DES	B	CLASS	F			
F.L. AVG. EFF.	85.5	PF	85							
RATING	40C AMB-CONT									
CC			USABLE AT 208V				5.6			
DE	6205	ODE	6203							
ENCL	OPEN	SN								
USABLE AT	50HZ 2HP 190/380V 6.2/3.1A							SF1.0		

AC Induction Motor Performance Data

Record # 57243

Typical performance - not guaranteed values

Winding: 35WGS254-R009		Type: 3524M	Enclosure: OPEN	
Nameplate Data			460 V, 60 Hz: High Voltage Connection	
Rated Output (HP)	2	Full Load Torque	3 LB-FT	
Volts	230/460	Start Configuration	direct on line	
Full Load Amps	5.2/2.6	Breakdown Torque	11.6 LB-FT	
R.P.M.	3450	Pull-up Torque	8.2 LB-FT	
Hz	60 Phase	Locked-rotor Torque	10.7 LB-FT	
NEMA Design Code	B KVA Code	Starting Current	18.8 A	
Service Factor (S.F.)	1.15	No-load Current	1 A	
NEMA Nom. Eff.	85.5 Power Factor	Line-line Res. @ 25°C	8.08 Ω	
Rating - Duty	40C AMB-CONT	Temp. Rise @ Rated Load	36°C	
S.F. Amps		Temp. Rise @ S.F. Load	43°C	
		Locked-rotor Power Factor	53.6	
		Rotor inertia	0.0657 LB-FT ²	

Load Characteristics 460 V, 60 Hz, 2 HP

% of Rated Load	25	50	75	100	125	150	S.F.
Power Factor	54	73	82	86	88	88	87
Efficiency	78.2	84.9	86.2	85.8	84.5	82.9	85
Speed	3566	3536	3504	3469	3429	3387	3445
Line amperes	1.2	1.6	2.1	2.6	3.2	3.8	3

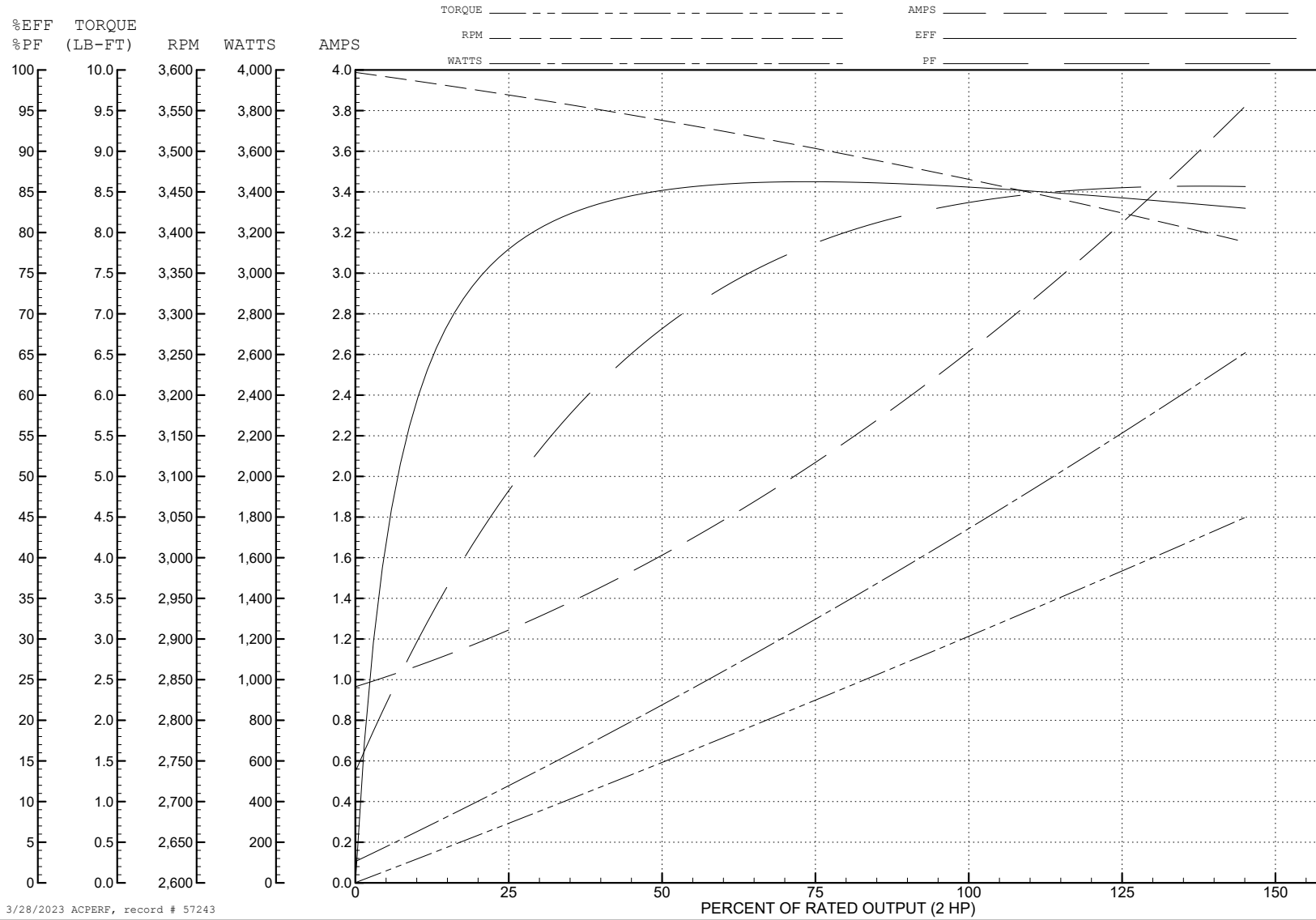
ABB Motors and Mechanical Inc.

WINDING # 35WGS254

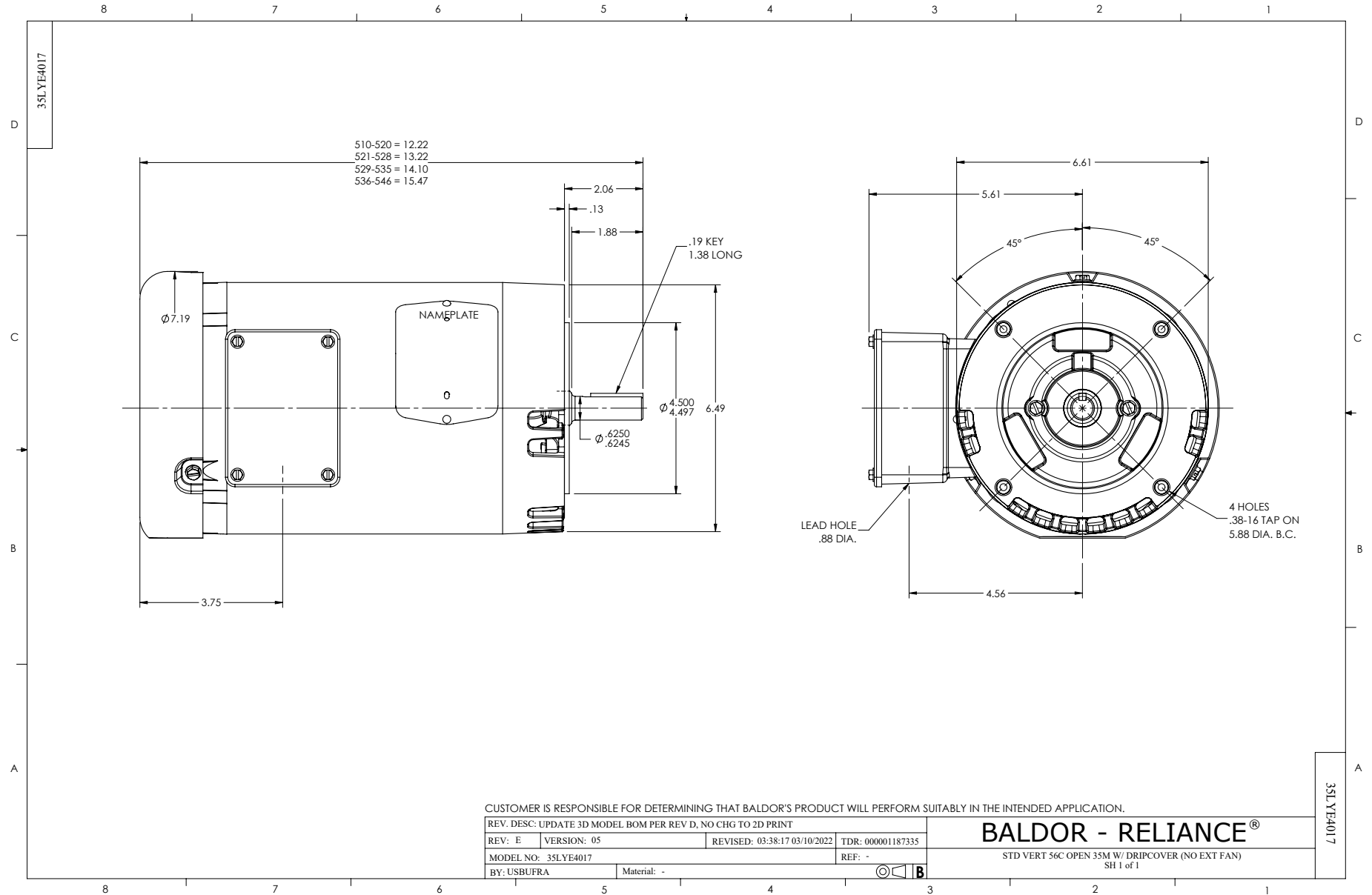
Typical performance - not guaranteed values.

2 HP 3 PH 60 HZ 3450 RPM 460 V 3524M

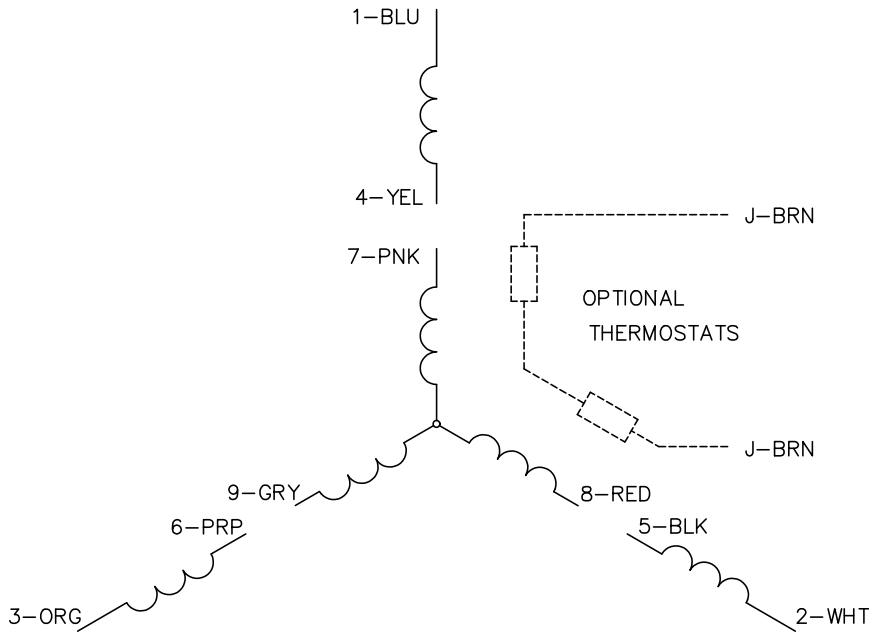
TORQUES (LB-FT): PO=11.6 PU=8.2 LR=10.7 LRA=18.8



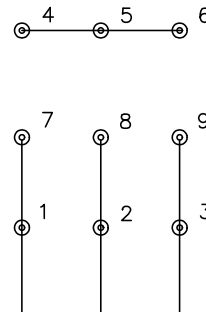
3/28/2023 ACPERF, record # 57243



CD0005

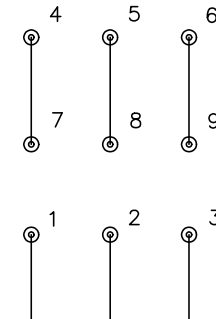


LOW VOLTAGE
(2Y)



LINE

HIGH VOLTAGE
(1Y)



LINE

NOTES:

1. INTERCHANGE ANY TWO LINE LEADS TO REVERSE ROTATION.
2. OPTIONAL THERMOSTATS ARE PROVIDED WHEN SPECIFIED.
3. ACTUAL NUMBER OF INTERNAL PARALLEL CIRCUITS MAY BE A MULTIPLE OF THOSE SHOWN ABOVE.
4. LEAD COLORS ARE OPTIONAL. LEADS MUST ALWAYS BE NUMBERED AS SHOWN.

CD0005

REV. DESC: REVISE TO SHOW OPTIONAL COLORS			
REV. LTR: E	BY: JLP	REVISED: 01/19/99 10:15	TDR: 0171435
S00000		FILE: AAA00005140	MDL: -
		MTL: -	

BALDOR ELECTRIC Co.

3PH, DV, 9 LEADS