

BALDOR • RELIANCE

Customer information packet

VEL11319

1.5HP, 1725RPM, 1PH, 60HZ, 56C, 3536LC, ODTF, F

Class - None

Division - Not Applicable

Specifications

Enclosure	ODTF
Frame	56C
Frame Material	Steel
Frequency	60.00 Hz
Haz Area Class and Group	None
Haz Area Division	Not Applicable
Motor Letter Type	Cap Start, Cap Run
Output @ Frequency	1.500 HP @ 60 HZ
Phase	1
Synchronous Speed @ Frequency	1800 RPM @ 60 HZ
Voltage @ Frequency	115.0 V @ 60 HZ 230.0 V @ 60 HZ
Agency Approvals	CURUSEEV
Ambient Temperature	40 °C
Auxillary Box	No Auxillary Box
Auxillary Box Lead Termination	None
Base Indicator	No Mounting
Bearing Grease Type	Polyrex EM (-20F +300F)
Blower	None
Current @ Voltage	12.300 A @ 115.0 V 6.100 A @ 230.0 V
Design Code	L
Drip Cover	Drip Cover
Duty Rating	CONT
Efficiency @ 100% Load	83.8 %
Electrically Isolated Bearing	Not Electrically Isolated
Feedback Device	NO FEEDBACK
Front Shaft Indicator	None
Heater Indicator	No Heater
High Voltage Full Load Amps	6.1 a
Insulation Class	F
Inverter Code	Not Inverter

Part detail

Revision	K
Type	AC
Mech. spec.	35E019
Base	
Status	PRD/A
Elec. spec.	35WGG129
Layout	35LYE019
Eff. date	07-23-2024
CD Diagram	CD0016A01
Poles	04
Leads	7#18
Proprietary	False
Created date	08-01-2022

KVA Code	J
Lifting Lugs	No Lifting Lugs
Locked Bearing Indicator	Locked Bearing
Motor Lead Quantity/Wire Size	7 @ 18 AWG
Motor Lead Termination	Flying Leads
Motor Standards	NEMA
Motor Type	3536LC
Mounting Arrangement	F1
Number of Poles	4
Overall Length	15.50 IN
Power Factor	94
Product Family	General Purpose
Pulley End Bearing Type	Ball
Pulley Face Code	C-Face
Pulley Shaft Indicator	Standard
Rodent Screen	None
Service Factor	1.15
Shaft Diameter	0.625 IN
Shaft Ground Indicator	No Shaft Grounding
Shaft Rotation	Reversible
Shaft Slinger Indicator	No Slinger
Speed	1725 rpm
Speed Code	Single Speed
Starting Method	Direct on line
Thermal Device - Bearing	None
Thermal Device - Winding	None
Vibration Sensor Indicator	No Vibration Sensor
Winding Thermal 1	None
Winding Thermal 2	None

Nameplate

NP3155L									
CAT.NO.	VEL11319								
SPEC.	35E019G129								
HP	1.5								
VOLTS	115/230								
AMP	12.3/6.1								
RPM	1725								
FRAME	56C		HZ	60		PH	1		
SER.F.	1.15	CODE	J	DES	L	CL	F		
F.L. AVG. EFF.	83.8	PF	94						
RATING	40C AMB-CONT								
CC									
DE	6205		ODE	6203					
ENCL	ODTF	SN							

AC Induction Motor Performance Data

Record # 83995

Typical performance - not guaranteed values

Winding: 35WGG129-R001		Type: 3536LC		Enclosure: ODP			
Nameplate Data			115 V, 60 Hz: Low Voltage Connection				
Rated Output (HP)	1.5	Full Load Torque	4.51 LB-FT				
Volts	115/230	Start Configuration	direct on line				
Full Load Amps	11.9/6.4	Breakdown Torque	12.2 LB-FT				
R.P.M.	1725	Pull-up Torque	8.7 LB-FT				
Hz	60 Phase	1	Locked-rotor Torque	13.1 LB-FT			
NEMA Design Code	L	KVA Code	J	Starting Current	97.5 A		
Service Factor (S.F.)	1.15	No-load Current	3.82 A				
NEMA Nom. Eff.	83.8	Power Factor	97	Line-line Res. @ 25°C	0.417 Ω A Ph 1.1 Ω B Ph		
Rating - Duty	40C	AMB-CONT	Temp. Rise @ Rated Load			48°C	
S.F. Amps				Temp. Rise @ S.F. Load	58°C		
			Locked-rotor Power Factor	89.5			
			Rotor inertia	0.261 lb-ft ²			

Load Characteristics 115 V, 60 Hz, 1.5 HP

% of Rated Load	25	50	75	100	125	150	S.F.
Power Factor	77	89	92	94	94	94	97
Efficiency	70.6	81.3	84.2	83.7	80.6	76	82.1
Speed	1786	1774	1759	1744	1721	1691	1723
Line amperes	4.57	6.72	9.43	12.3	16.12	20.55	14.2

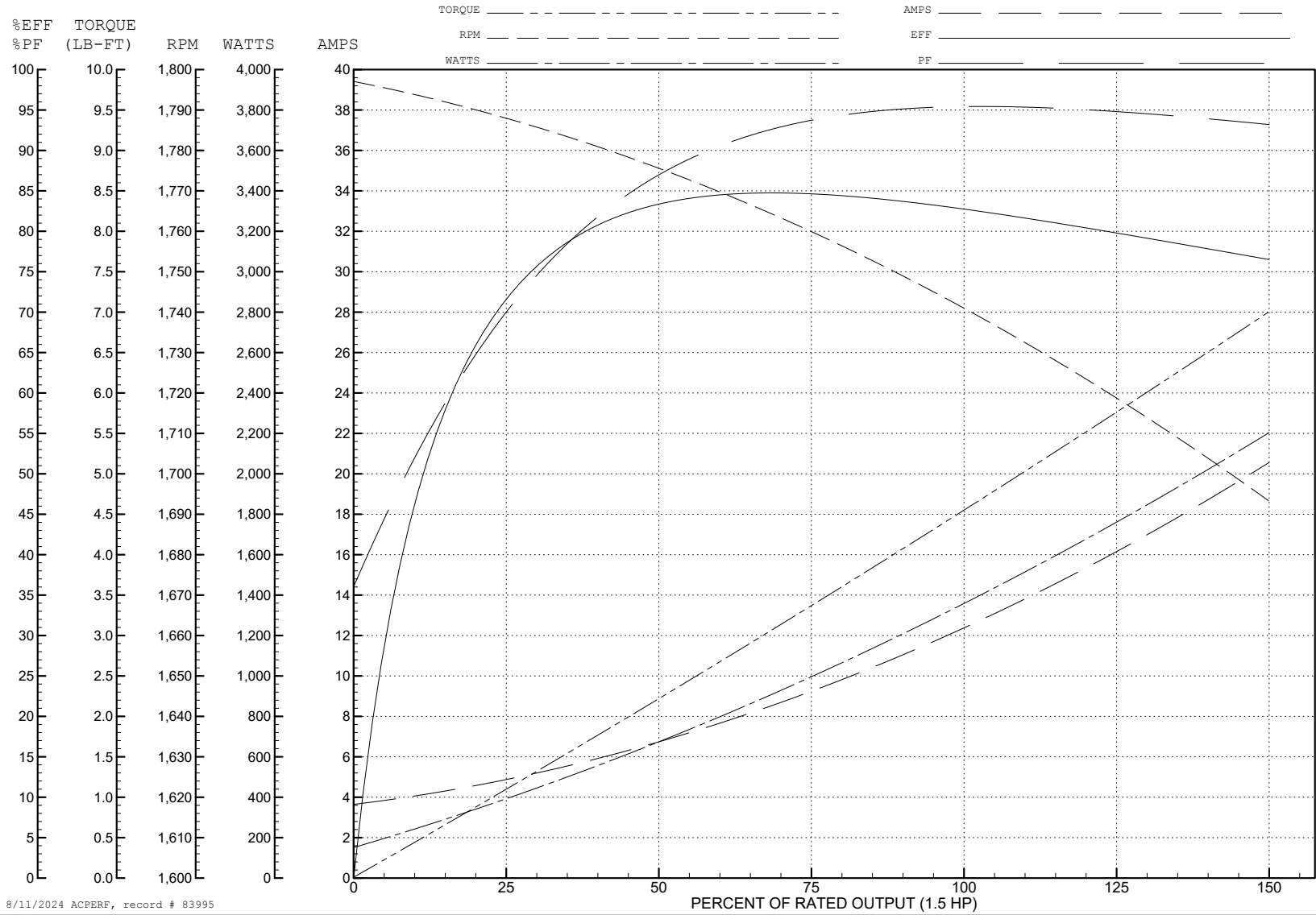
ABB Motors and Mechanical Inc.

WINDING # 35WGG129

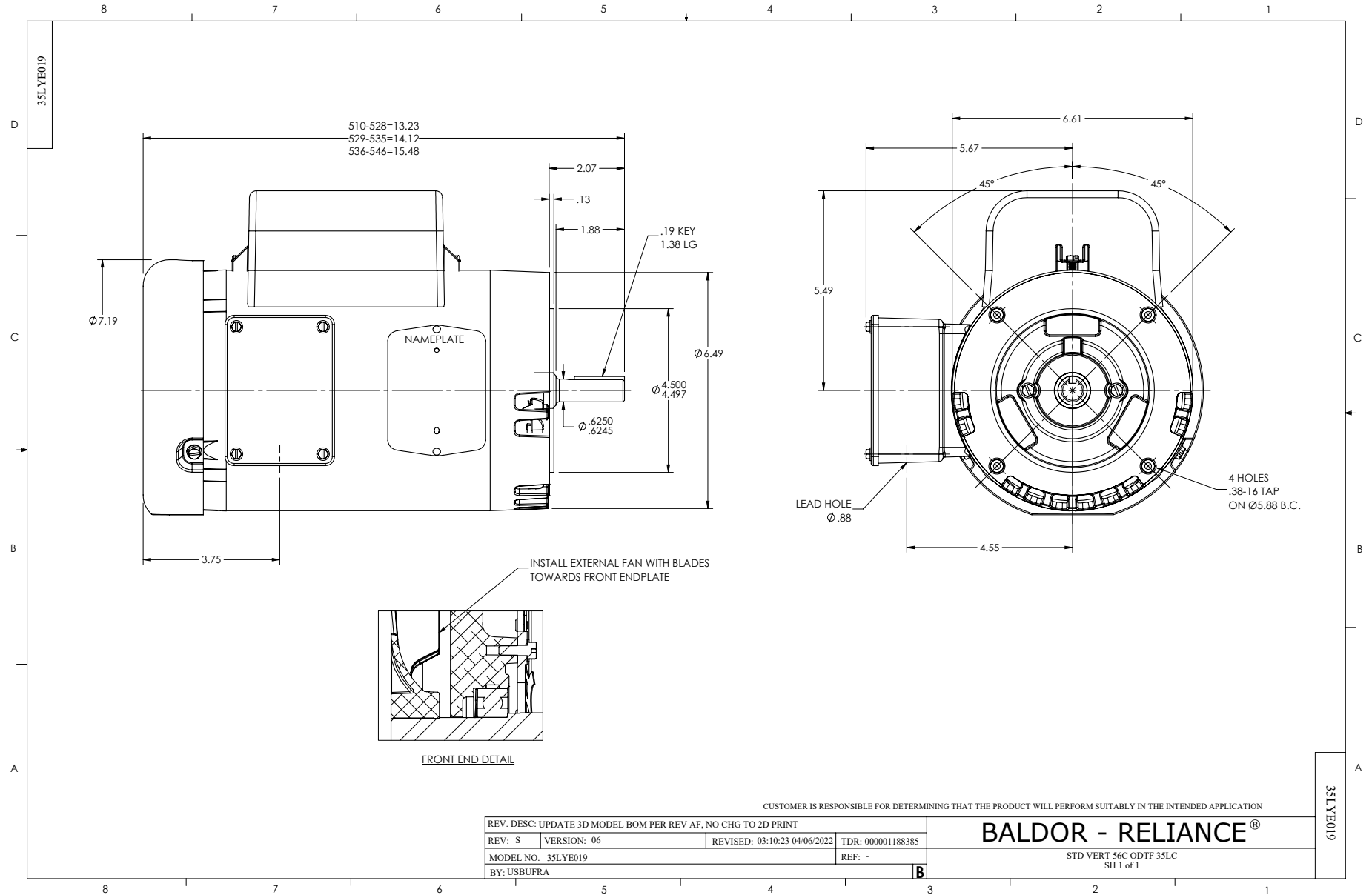
Typical performance - not guaranteed values.

1.5 HP 1 PH 60 HZ 1725 RPM 115 V 3536LC

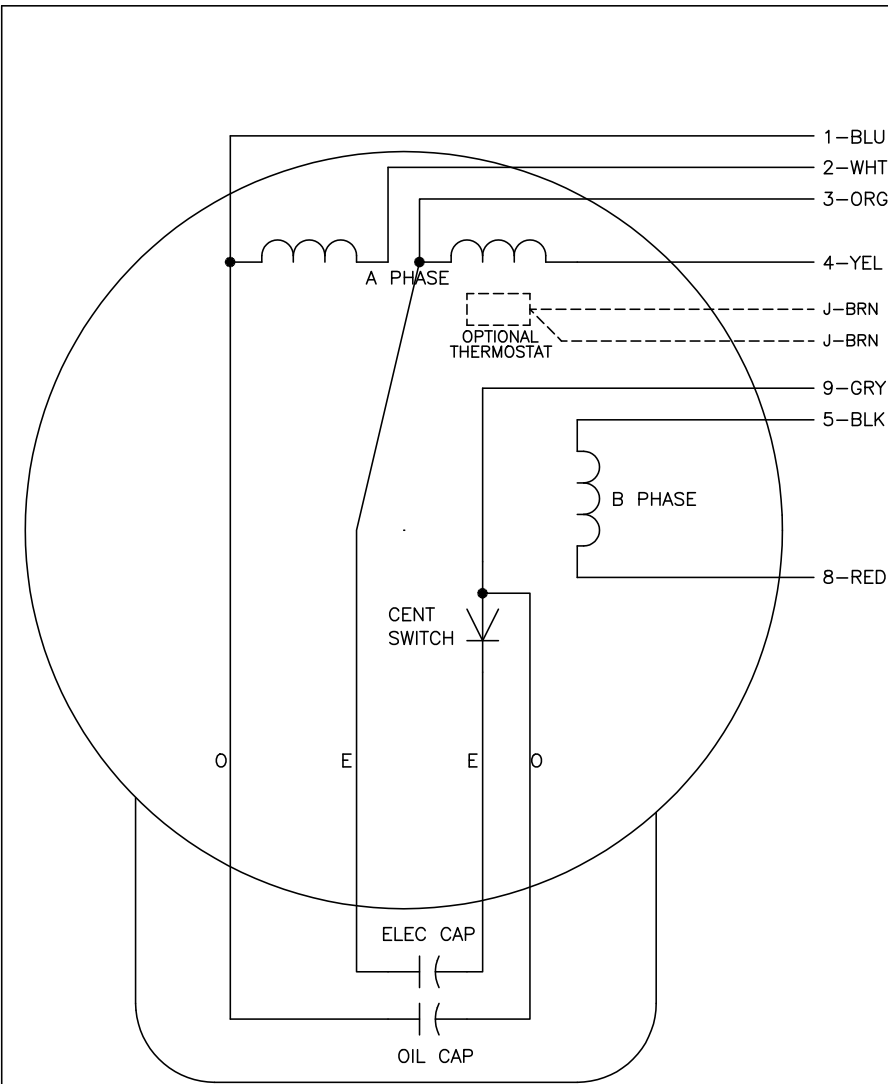
TORQUES (LB-FT): PO=12.2 PU=8.7 LR=13.1 LRA=97.5



8/11/2024 ACPERF, record # 83995



CD0016A01



	LINE A	LINE B	JOIN	JOIN
HIGH STD	1	4,5	2,3	8,9
HIGH OPP	1	4,8	2,3	5,9
LOW STD	1,3	2,4,5	8,9	-
LOW OPP	1,3	2,4,8	5,9	-

NOTES:

1. STANDARD ROTATION IS CCW FACING END OPPOSITE SHAFT EXTENSION.
2. OPTIONAL THERMOSTAT IS PROVIDED WHEN SPECIFIED.
3. MULTIPLE CAPACITORS ARE CONNECTED IN PARALLEL UNLESS OTHERWISE SPECIFIED.
4. LEAD COLORS ARE OPTIONAL. LEADS MUST ALWAYS BE NUMBERED AS SHOWN.

CD0016A01

REV. DESC: REVISE TO SHOW OPTIONAL COLORS			
REV. LTR: E	BY: JLP	REVISED: 04/09/99 1:19	TDR: 0178636
10A91000		FILE: AAA00007410	MDL: -
		MTL: -	

BALDOR ELECTRIC Co.

TYPE LC, DV, REV, OIL CAP ACR. LINE, 7 LEADS