



---

# Customer information packet

## VEL11317A

2HP, 3470RPM, 1PH, 60HZ, 56C, 3540LC, OPEN, F1

Class - None

Division - Not Applicable

## Specifications

Enclosure	OPEN
Frame	56C
Frame Material	Steel
Frequency	60.00 Hz
Haz Area Class and Group	None
Haz Area Division	Not Applicable
Motor Letter Type	Cap Start, Cap Run
Output @ Frequency	2.000 HP @ 60 HZ
Phase	1
Synchronous Speed @ Frequency	3600 RPM @ 60 HZ
Voltage @ Frequency	115.0 V @ 60 HZ 230.0 V @ 60 HZ
Ambient Temperature	40 °C
Auxillary Box	No Auxillary Box
Auxillary Box Lead Termination	None
Base Indicator	No Mounting
Bearing Grease Type	Polyrex EM (-20F +300F)
Blower	None
Current @ Voltage	15.600 A @ 115.0 V 7.800 A @ 230.0 V 9.900 A @ 208.0 V
Design Code	L
Drip Cover	Drip Cover
Duty Rating	CONT
Efficiency @ 100% Load	82.9 %
Electrically Isolated Bearing	Not Electrically Isolated
Feedback Device	NO FEEDBACK
Front Shaft Indicator	None
Heater Indicator	No Heater
High Voltage Full Load Amps	7.8 a
Insulation Class	B
Inverter Code	Not Inverter

## Part detail

Revision	B
Type	AC
Mech. spec.	35EL001
Base	
Status	PRD/A
Elec. spec.	35WGL153
Layout	35LYEL001
Eff. date	01-02-2025
CD Diagram	CD0881
Poles	02
Leads	6#16,1#14
Proprietary	False
Created date	02-07-2023

<b>KVA Code</b>	G
<b>Lifting Lugs</b>	No Lifting Lugs
<b>Locked Bearing Indicator</b>	Locked Bearing
<b>Motor Lead Quantity/Wire Size</b>	6 @ 16 AWG
<b>Motor Lead Termination</b>	Flying Leads
<b>Motor Standards</b>	NEMA
<b>Motor Type</b>	3540LC
<b>Mounting Arrangement</b>	F1
<b>Number of Poles</b>	2
<b>Overall Length</b>	15.47 IN
<b>Power Factor</b>	99
<b>Product Family</b>	General Purpose
<b>Pulley End Bearing Type</b>	Ball
<b>Pulley Face Code</b>	C-Face
<b>Pulley Shaft Indicator</b>	Standard
<b>Rodent Screen</b>	None
<b>RoHS Status</b>	ROHS COMPLIANT
<b>Service Factor</b>	1.15
<b>Shaft Diameter</b>	0.625 IN
<b>Shaft Ground Indicator</b>	No Shaft Grounding
<b>Shaft Rotation</b>	Reversible
<b>Shaft Slinger Indicator</b>	No Slinger
<b>Speed</b>	3470 rpm
<b>Speed Code</b>	Single Speed
<b>Starting Method</b>	Direct on line
<b>Thermal Device - Bearing</b>	None
<b>Thermal Device - Winding</b>	None
<b>Vibration Sensor Indicator</b>	No Vibration Sensor
<b>Winding Thermal 1</b>	Automatic Thermal Overload
<b>Winding Thermal 1 Location</b>	SB
<b>Winding Thermal 2</b>	None

**Nameplate**

<b>NP3273L</b>									
<b>CAT.NO.</b>	VEL11317A								
<b>SPEC.</b>	35EL001L153G1								
<b>HP</b>	2								
<b>VOLTS</b>	115/230								
<b>AMP</b>	15.6/7.8								
<b>RPM</b>	3470								
<b>FRAME</b>	56C		<b>HZ</b>	60		<b>PH</b>	1		
<b>SER.F.</b>	1.15	<b>CODE</b>	G	<b>DES</b>	L	<b>CL</b>	B		
<b>F.L. AVG. EFF.</b>	82.9	<b>PF</b>	99						
<b>RATING</b>	40C AMB-CONT								
<b>CC</b>									
<b>DE</b>	6205		<b>ODE</b>	6203					
<b>ENCL</b>	OPEN	<b>SN</b>							

**AC Induction Motor Performance Data**

Record # 49049

Typical performance - not guaranteed values

Winding: 35WGL153-R001		Type: 3540LC	Enclosure: OPEN		
<b>Nameplate Data</b>			<b>115 V, 60 Hz: Low Voltage Connection</b>		
Rated Output (HP)	2	Full Load Torque	3.02 LB-FT		
Volts	115/230	Start Configuration	direct on line		
Full Load Amps	15.6/7.8	Breakdown Torque	7.37 LB-FT		
R.P.M.	3470	Pull-up Torque	4.62 LB-FT		
Hz	60 Phase	1	Locked-rotor Torque	7.94 LB-FT	
NEMA Design Code	L	KVA Code	G	Starting Current	98.8 A
Service Factor (S.F.)	1.15	No-load Current	2.21 A		
NEMA Nom. Eff.	82.9	Power Factor	99	Line-line Res. @ 25°C	0.28842 Ω A Ph 0.56941 Ω B Ph
Rating - Duty	40C	AMB-CONT	Temp. Rise @ Rated Load	25°C	
S.F. Amps			Temp. Rise @ S.F. Load	33°C	

**Load Characteristics 115 V, 60 Hz, 2 HP**

% of Rated Load	25	50	75	100	125	150	S.F.
Power Factor	97	100	100	99	99	98	99
Efficiency	71.3	82	84.1	83.5	80.6	76.8	81.8
Speed	3570.3	3542.6	3508.2	3472.2	3424.1	3372.2	3443
Line amperes	4.73	7.91	11.7	15.6	20.5	25.8	18.5

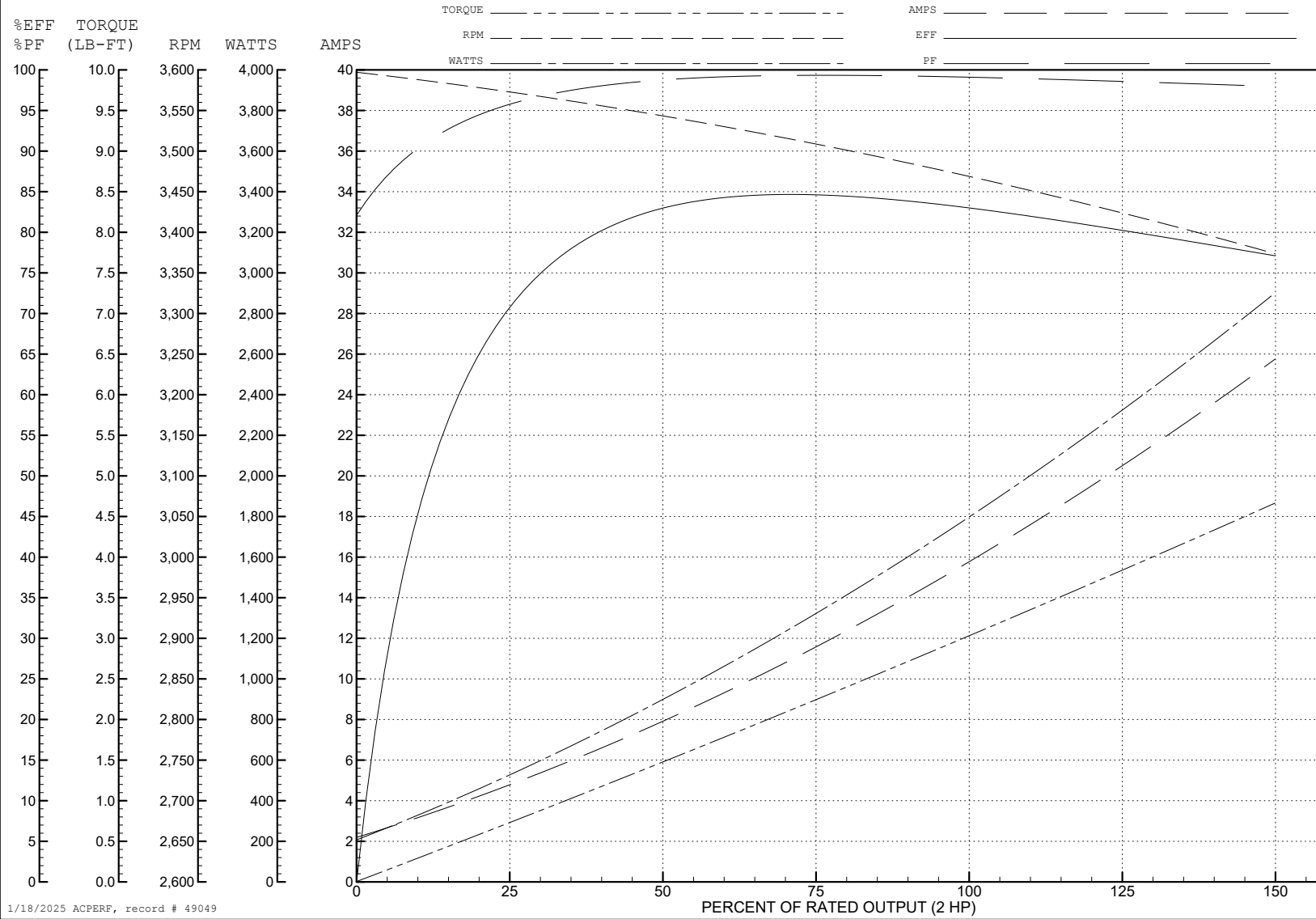
ABB Motors and Mechanical Inc.

WINDING # 35WGL153

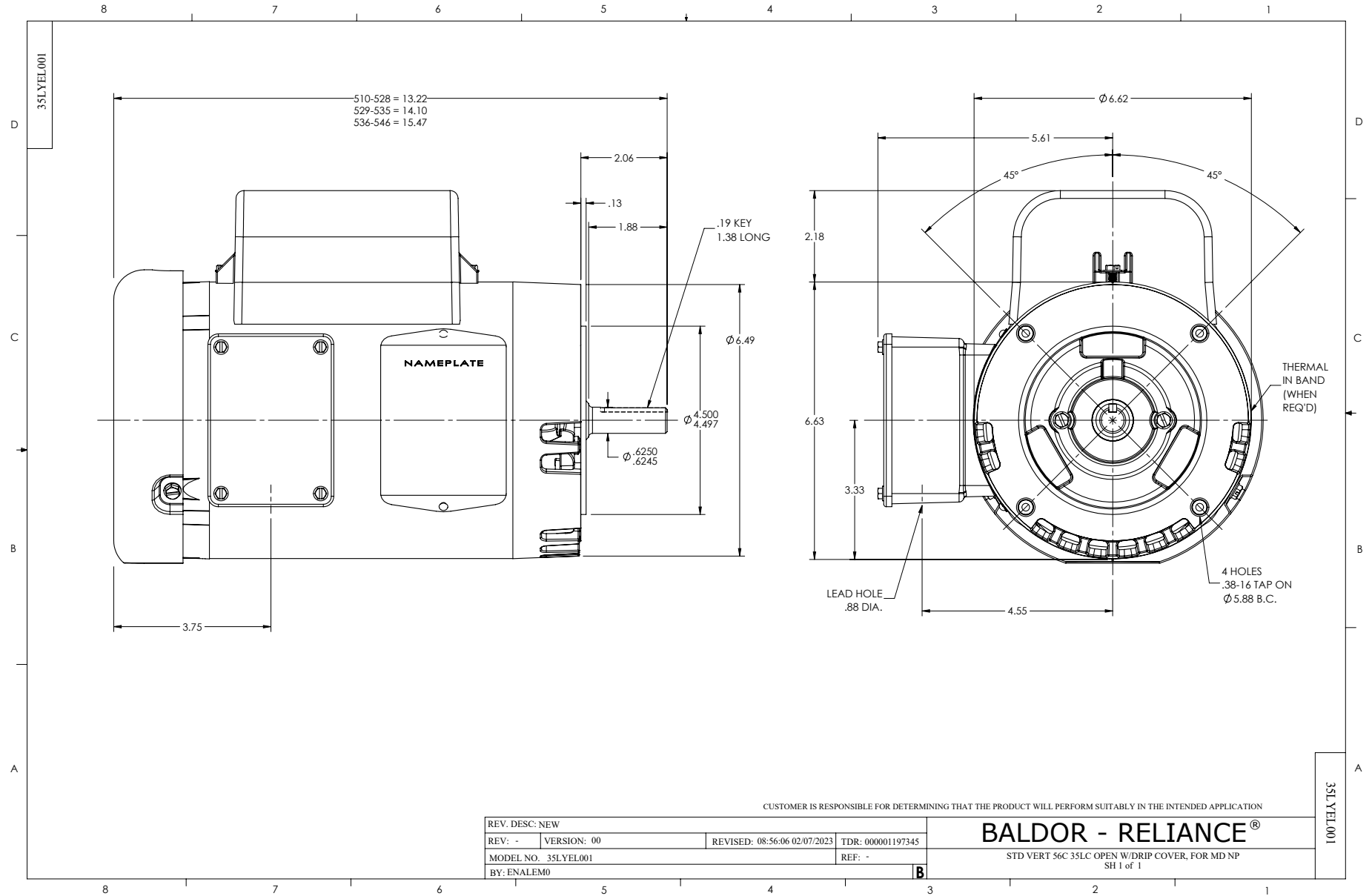
Typical performance - not guaranteed values.

2 HP 1 PH 60 HZ 3470 RPM 115 V 3540LC

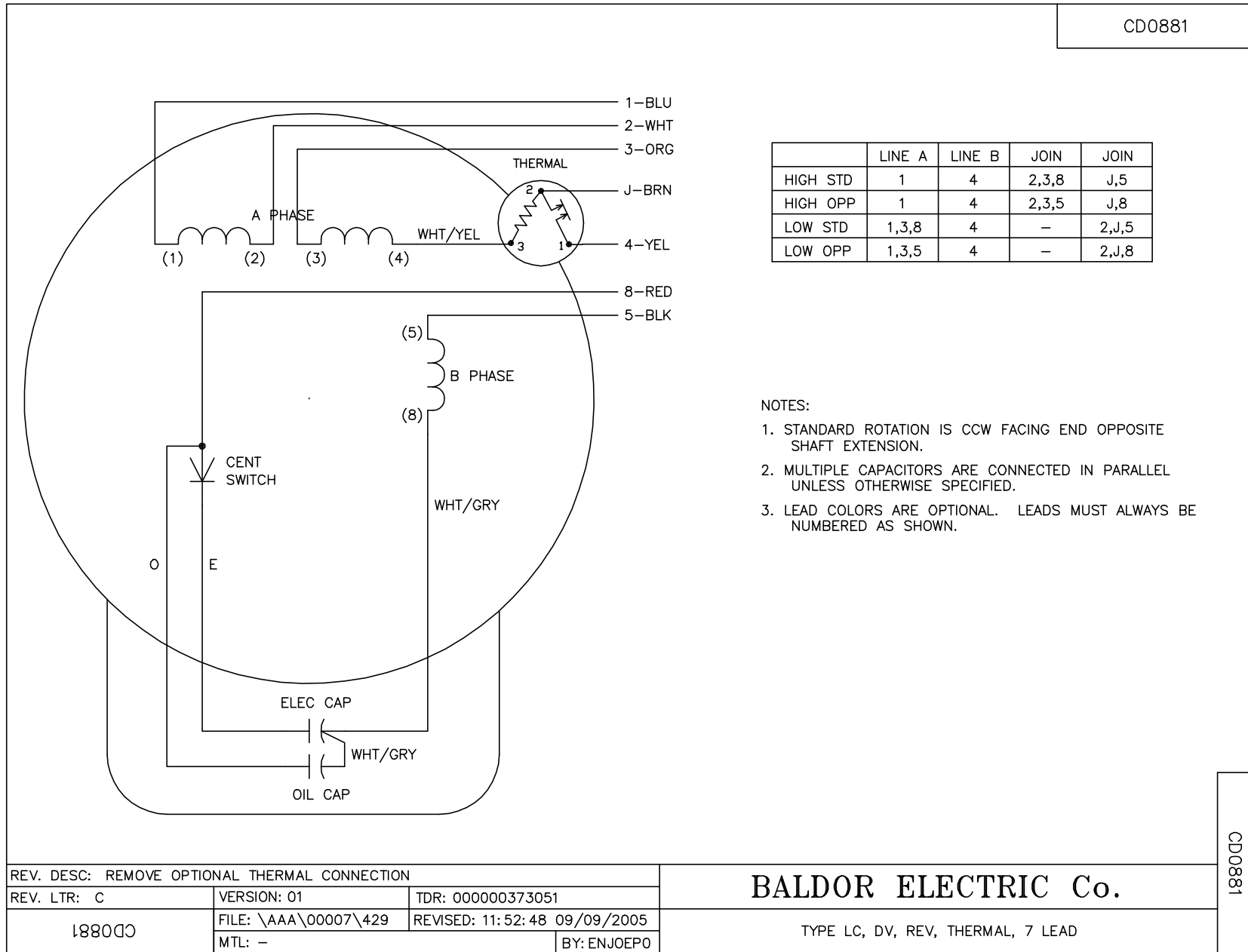
TORQUES (LB-FT): PO=7.37 PU=4.62 LR=7.94 LRA=98.8



1/18/2025 ACPERF, record # 49049



CD0881



REV. DESC: REMOVE OPTIONAL THERMAL CONNECTION		
REV. LTR: C	VERSION: 01	TDR: 000000373051
18800	FILE: \AAA\00007\429	REVISED: 11:52:48 09/09/2005
	MTL: -	BY: ENJOEPO

**BALDOR ELECTRIC Co.**

TYPE LC, DV, REV, THERMAL, 7 LEAD

CD0881