

**BALDOR • RELIANCE**

---

# Customer information packet

## VEL11317

2HP, 3470RPM, 1PH, 60HZ, 56C, 3540LC, OPEN, F1

Class - None

Division - Not Applicable

Copyright © All product information within this document is subject to ABB Motors and Mechanical Inc. copyright © protection, unless otherwise noted.

7/21/2024 8:17:03 PM

## Specifications

|                                |   |
|--------------------------------|---|
| Enclosure                      | OPEN                                    |
| Frame                          | 56C                                     |
| Frame Material                 | Steel                                   |
| Frequency                      | 60.00 Hz                                |
| Haz Area Class and Group       | None                                    |
| Haz Area Division              | Not Applicable                          |
| Motor Letter Type              | Cap Start, Cap Run                      |
| Output @ Frequency             | 2.000 HP @ 60 HZ                        |
| Phase                          | 1                                       |
| Synchronous Speed @ Frequency  | 3600 RPM @ 60 HZ                        |
| Voltage @ Frequency            | 115.0 V @ 60 HZ<br>230.0 V @ 60 HZ      |
| Agency Approvals               | CURUSEEV                                |
| Ambient Temperature            | 40 °C                                   |
| Auxillary Box                  | No Auxillary Box                        |
| Auxillary Box Lead Termination | None                                    |
| Base Indicator                 | No Mounting                             |
| Bearing Grease Type            | Polyrex EM (-20F +300F)                 |
| Blower                         | None                                    |
| Current @ Voltage              | 15.600 A @ 115.0 V<br>7.800 A @ 230.0 V |
| Design Code                    | L                                       |
| Drip Cover                     | Drip Cover                              |
| Duty Rating                    | CONT                                    |
| Efficiency @ 100% Load         | 82.9 %                                  |
| Electrically Isolated Bearing  | Not Electrically Isolated               |
| Feedback Device                | NO FEEDBACK                             |
| Front Face Code                | Standard                                |
| Front Shaft Indicator          | None                                    |
| Heater Indicator               | No Heater                               |
| High Voltage Full Load Amps    | 7.8 a                                   |
| Insulation Class               | B                                       |

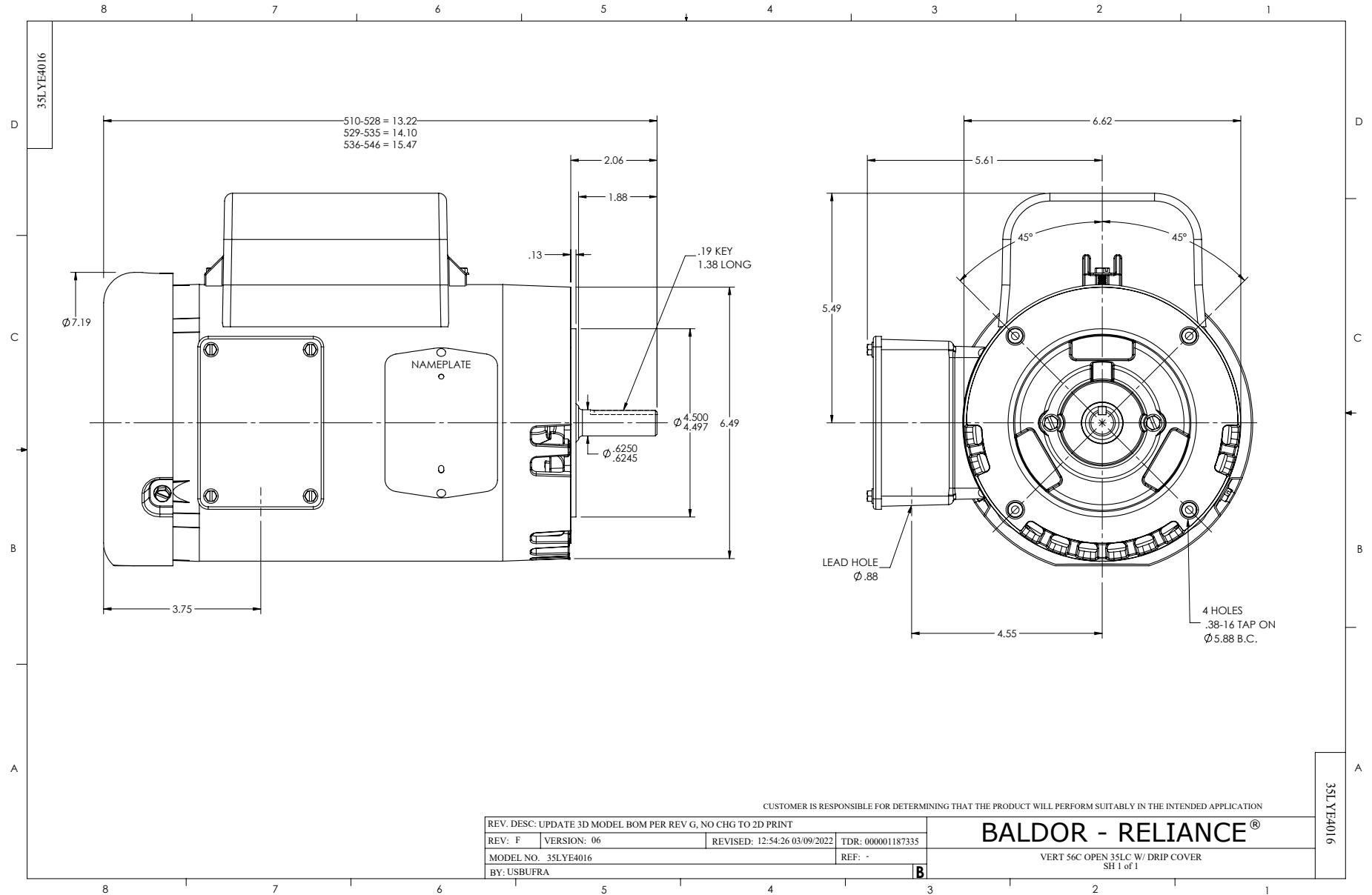
## Part detail

|              |            |
|--------------|------------|
| Revision     | L          |
| Type         | AC         |
| Mech. spec.  | 35E4016    |
| Base         |            |
| Status       | PRD/A      |
| Elec. spec.  | 35WGN674   |
| Layout       | 35LYE4016  |
| Eff. date    | 05-16-2024 |
| CD Diagram   | CD0055     |
| Poles        | 02         |
| Leads        | 6#16       |
| Proprietary  | False      |
| Created date | 09-29-2014 |

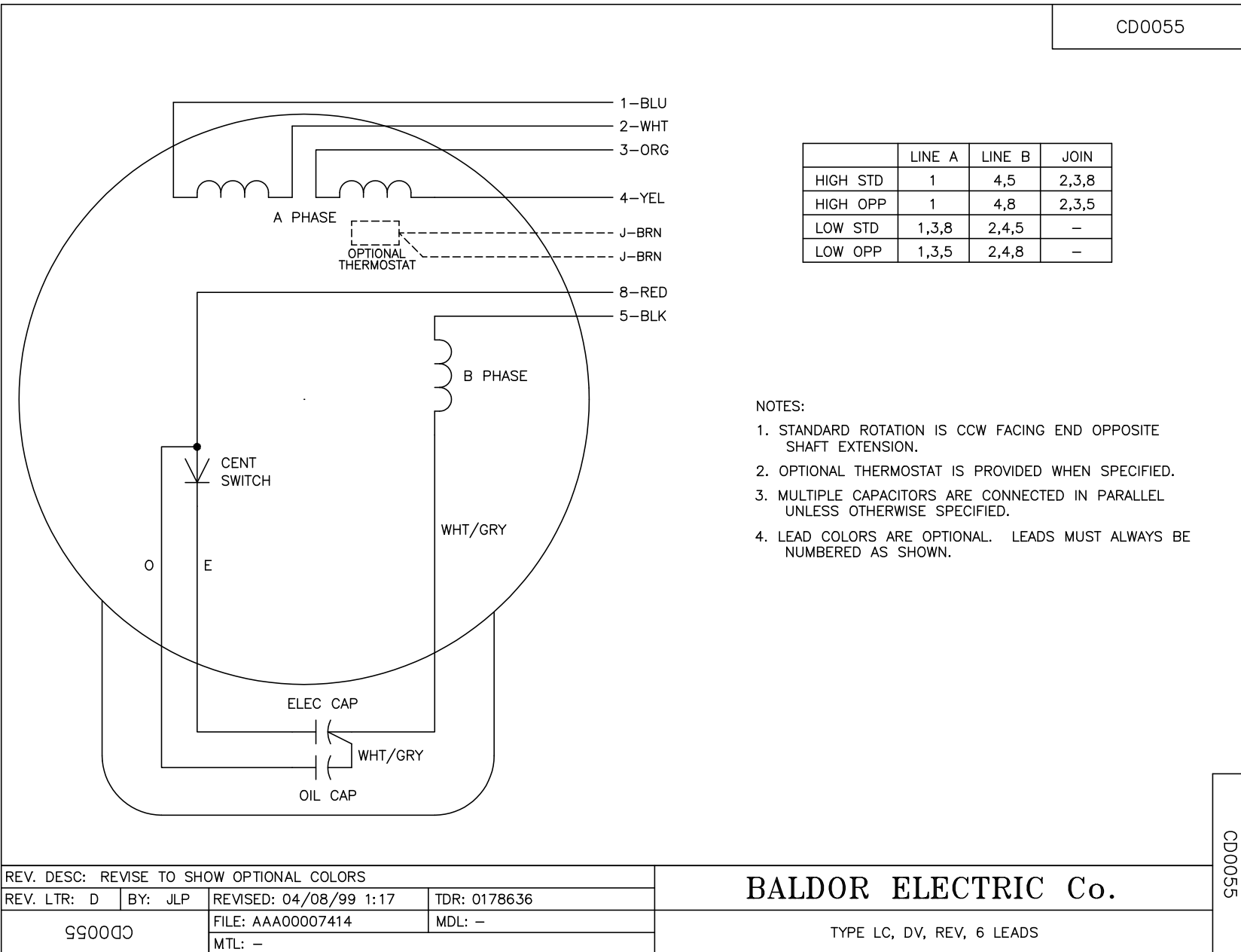
|                               |                     |
|-------------------------------|---------------------|
| Inverter Code                 | Not Inverter        |
| KVA Code                      | G                   |
| Lifting Lugs                  | No Lifting Lugs     |
| Locked Bearing Indicator      | Locked Bearing      |
| Motor Lead Exit               | Ko Box              |
| Motor Lead Quantity/Wire Size | 6 @ 16 AWG          |
| Motor Lead Termination        | Flying Leads        |
| Motor Standards               | NEMA                |
| Motor Type                    | 3540LC              |
| Mounting Arrangement          | F1                  |
| Number of Poles               | 2                   |
| Overall Length                | 15.47 IN            |
| Power Factor                  | 99                  |
| Product Family                | General Purpose     |
| Pulley End Bearing Type       | Ball                |
| Pulley Face Code              | C-Face              |
| Pulley Shaft Indicator        | Standard            |
| Rodent Screen                 | None                |
| RoHS Status                   | ROHS COMPLIANT      |
| Service Factor                | 1.15                |
| Shaft Diameter                | 0.625 IN            |
| Shaft Extension Location      | Pulley End          |
| Shaft Ground Indicator        | No Shaft Grounding  |
| Shaft Rotation                | Reversible          |
| Shaft Slinger Indicator       | No Slinger          |
| Speed                         | 3470 rpm            |
| Speed Code                    | Single Speed        |
| Starting Method               | Direct on line      |
| Thermal Device - Bearing      | None                |
| Thermal Device - Winding      | None                |
| Vibration Sensor Indicator    | No Vibration Sensor |
| Winding Thermal 1             | None                |
| Winding Thermal 2             | None                |

**Nameplate**

| <b>NP3155L</b>        |               |             |            |            |   |           |   |  |  |
|-----------------------|---------------|-------------|------------|------------|---|-----------|---|--|--|
| <b>CAT.NO.</b>        | VEL11317      |             |            |            |   |           |   |  |  |
| <b>SPEC.</b>          | 35E4016N674G1 |             |            |            |   |           |   |  |  |
| <b>HP</b>             | 2             |             |            |            |   |           |   |  |  |
| <b>VOLTS</b>          | 115/230       |             |            |            |   |           |   |  |  |
| <b>AMP</b>            | 15.6/7.8      |             |            |            |   |           |   |  |  |
| <b>RPM</b>            | 3470          |             |            |            |   |           |   |  |  |
| <b>FRAME</b>          | 56C           |             | <b>HZ</b>  | 60         |   | <b>PH</b> | 1 |  |  |
| <b>SER.F.</b>         | 1.15          | <b>CODE</b> | G          | <b>DES</b> | L | <b>CL</b> | B |  |  |
| <b>F.L. AVG. EFF.</b> | 82.9          | <b>PF</b>   | 99         |            |   |           |   |  |  |
| <b>RATING</b>         | 40C AMB-CONT  |             |            |            |   |           |   |  |  |
| <b>CC</b>             |               |             |            |            |   |           |   |  |  |
| <b>DE</b>             | 6205          |             | <b>ODE</b> | 6203       |   |           |   |  |  |
| <b>ENCL</b>           | OPEN          | <b>SN</b>   |            |            |   |           |   |  |  |



CD0055



CD0055

|   |         |                        |              |
|---|---------|------------------------|--------------|
| REV. DESC: REVISE TO SHOW OPTIONAL COLORS |         |                        |              |
| REV. LTR: D                               | BY: JLP | REVISED: 04/08/99 1:17 | TDR: 0178636 |
| C00000                                    |         | FILE: AAA00007414      | MDL: -       |
|   |         | MTL: -                 |              |

**BALDOR ELECTRIC Co.**

TYPE LC, DV, REV, 6 LEADS