

BALDOR • RELIANCE

Customer information packet

VEL11313A

1.5HP, 3480RPM, 1PH, 60HZ, 56C, 3532LC, OPEN, F

Class - None

Division - Not Applicable

Specifications

Enclosure	OPEN
Frame	56C
Frame Material	Steel
Frequency	60.00 Hz
Haz Area Class and Group	None
Haz Area Division	Not Applicable
Motor Letter Type	Cap Start, Cap Run
Output @ Frequency	1.500 HP @ 60 HZ
Phase	1
Synchronous Speed @ Frequency	3600 RPM @ 60 HZ
Voltage @ Frequency	115.0 V @ 60 HZ 230.0 V @ 60 HZ
Ambient Temperature	40 °C
Auxillary Box	No Auxillary Box
Auxillary Box Lead Termination	None
Base Indicator	No Mounting
Bearing Grease Type	Polyrex EM (-20F +300F)
Blower	None
Current @ Voltage	11.800 A @ 115.0 V 5.900 A @ 230.0 V 7.800 A @ 208.0 V
Design Code	L
Drip Cover	Drip Cover
Duty Rating	CONT
Efficiency @ 100% Load	82.0 %
Electrically Isolated Bearing	Not Electrically Isolated
Feedback Device	NO FEEDBACK
Front Shaft Indicator	None
Heater Indicator	No Heater
High Voltage Full Load Amps	5.9 a
Insulation Class	B
Inverter Code	Not Inverter

Part detail

Revision	B
Type	AC
Mech. spec.	35EL001
Base	
Status	PRD/A
Elec. spec.	35WGL162
Layout	35LYEL001
Eff. date	04-30-2024
CD Diagram	CD0320
Poles	02
Leads	6#16,1#14 #4TH
Proprietary	False
Created date	02-07-2023

KVA Code	G
Lifting Lugs	No Lifting Lugs
Locked Bearing Indicator	Locked Bearing
Motor Lead Quantity/Wire Size	6 @ 16 AWG
Motor Lead Termination	Flying Leads
Motor Standards	NEMA
Motor Type	3532LC
Mounting Arrangement	F1
Number of Poles	2
Overall Length	14.10 IN
Power Factor	99
Product Family	General Purpose
Pulley End Bearing Type	Ball
Pulley Face Code	C-Face
Pulley Shaft Indicator	Standard
Rodent Screen	None
RoHS Status	ROHS COMPLIANT
Service Factor	1.15
Shaft Diameter	0.625 IN
Shaft Ground Indicator	No Shaft Grounding
Shaft Rotation	Reversible
Shaft Slinger Indicator	No Slinger
Speed	3480 rpm
Speed Code	Single Speed
Starting Method	Direct on line
Thermal Device - Bearing	None
Thermal Device - Winding	None
Vibration Sensor Indicator	No Vibration Sensor
Winding Thermal 1	Automatic Thermal Overload
Winding Thermal 1 Location	SB
Winding Thermal 2	None

Nameplate

NP4423B14M36L									
CAT #	VEL11313A			WGT	52	LBS			
SPEC	35EL001L162G1			ENCL	OPEN				
SER #				CC		IP	23		
HP	1.5	NEMA NOM. EFF			82				
VOLTS	115/230								
AMPS	11.8/5.9			PF	99				
RATING	40C AMB-CONT								
RPM	3480								
FRAME	56C	HZ	60	CODE	G	CLASS	B		
SER.F.	1.15	SF AMP		PH	1	DES	L		
DE	6205	ODE	6203						
LUBRICATION	POLYREX EM								
	35WGL162								
				QR					
YR									

AC Induction Motor Performance Data

Record # 48724

Typical performance - not guaranteed values

Winding: 35WGL162-R001		Type: 3532LC	Enclosure: OPEN	
Nameplate Data			115 V, 60 Hz: Low Voltage Connection	
Rated Output (HP)	1.5	Full Load Torque	2.26 LB-FT	
Volts	115/230	Start Configuration	direct on line	
Full Load Amps	11.8/5.9	Breakdown Torque	5.43 LB-FT	
R.P.M.	3480	Pull-up Torque	3.28 LB-FT	
Hz	60 Phase	1	Locked-rotor Torque	5.8 LB-FT
NEMA Design Code	L KVA Code	G	Starting Current	73.7 A
Service Factor (S.F.)	1.15	No-load Current	2.44 A	
NEMA Nom. Eff.	82 Power Factor	99	Line-line Res. @ 25°C	0.43089 Ω A Ph 0.72107 Ω B Ph
Rating - Duty	40C AMB-CONT	Temp. Rise @ Rated Load	17°C	
S.F. Amps		Temp. Rise @ S.F. Load	22°C	

Load Characteristics 115 V, 60 Hz, 1.5 HP

% of Rated Load	25	50	75	100	125	150	S.F.
Power Factor	89	98	99	100	99	98	99
Efficiency	70.1	80.9	83.3	82.9	80.3	76	81.3
Speed	3573.6	3549.3	3520	3484.9	3443.3	3387.4	3460
Line amperes	3.88	6.09	8.8	11.8	15.3	19.6	13.9

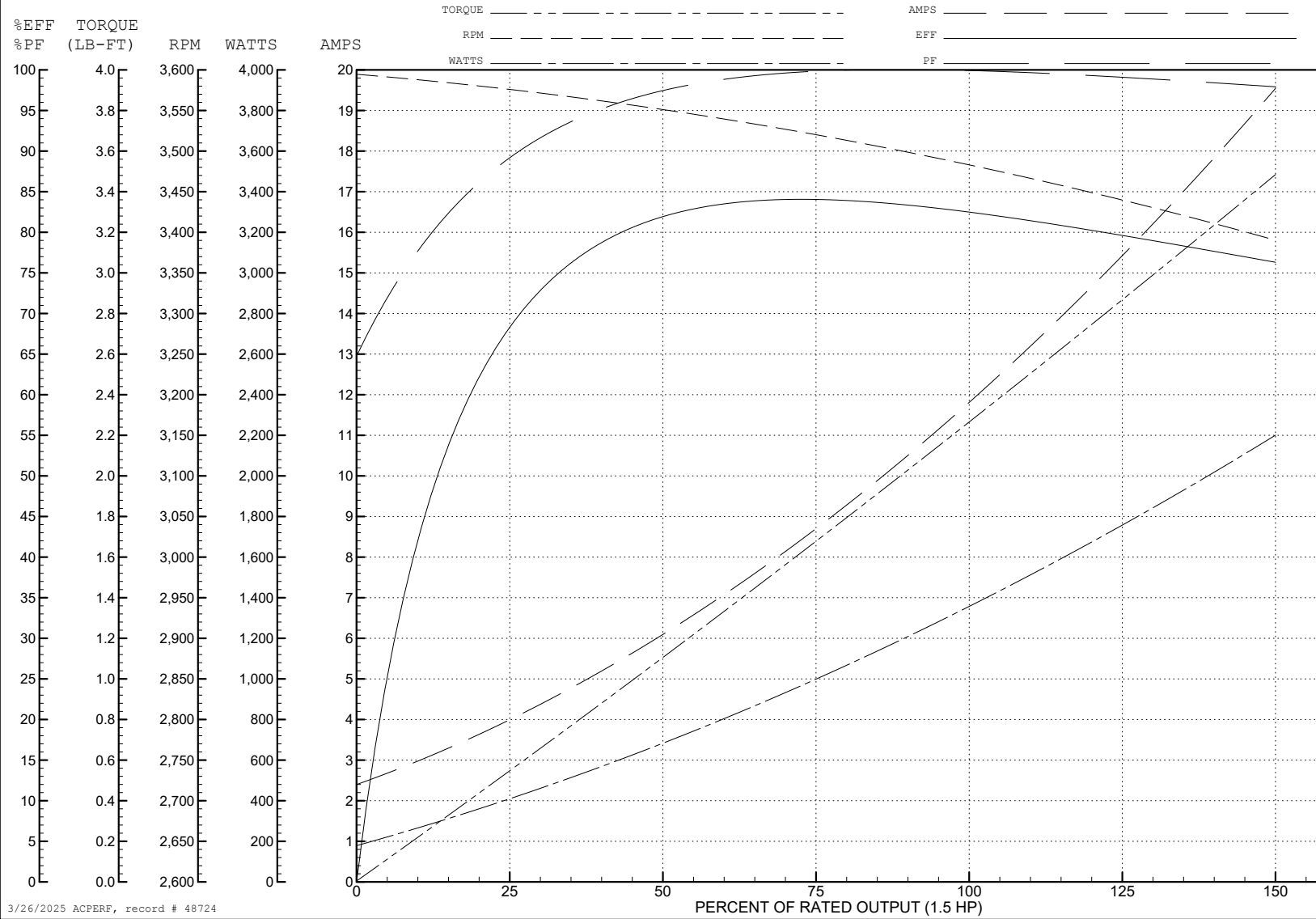
ABB Motors and Mechanical Inc.

WINDING # 35WGL162

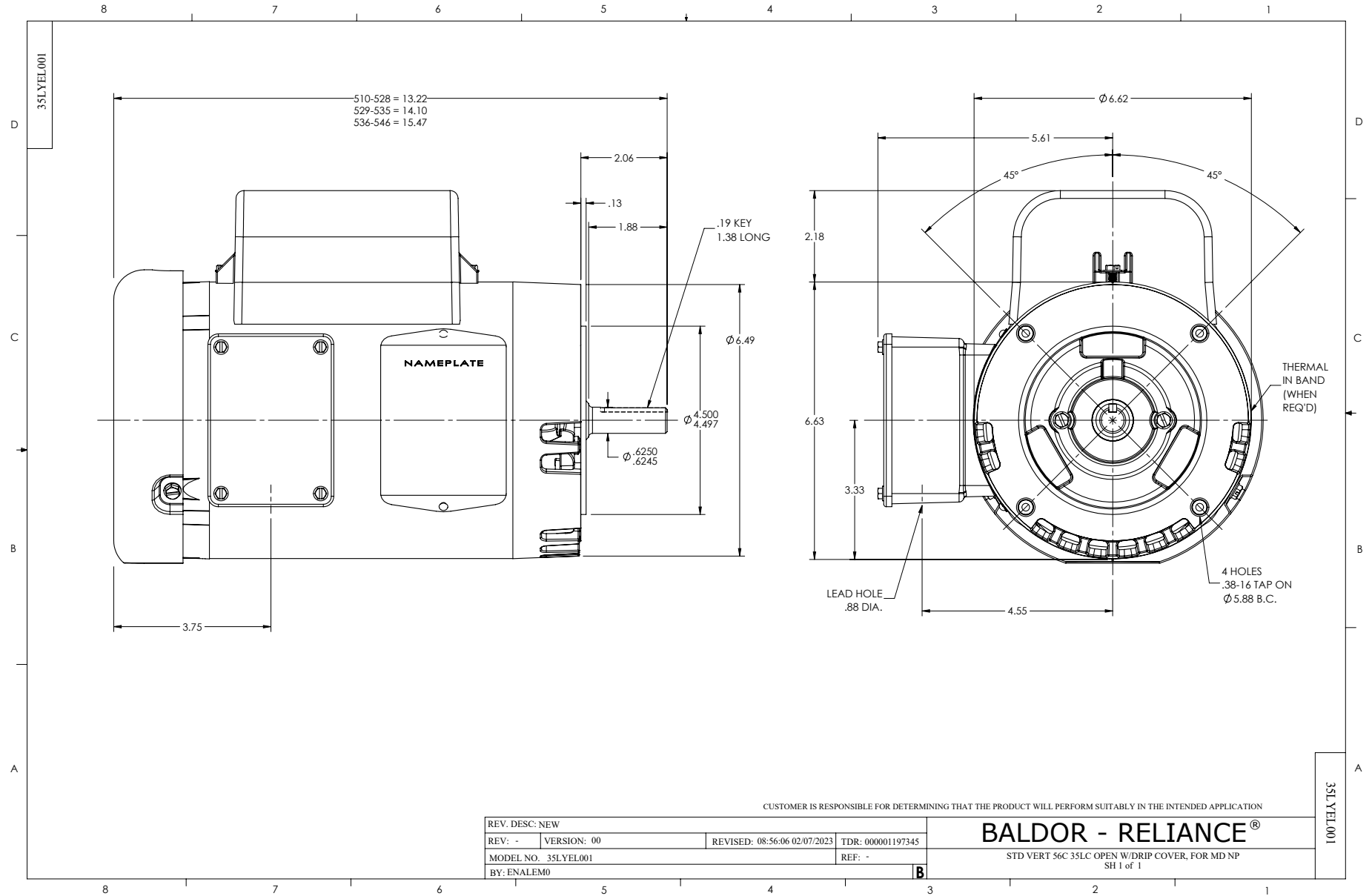
Typical performance - not guaranteed values.

1.5 HP 1 PH 60 HZ 3480 RPM 115 V 3532LC

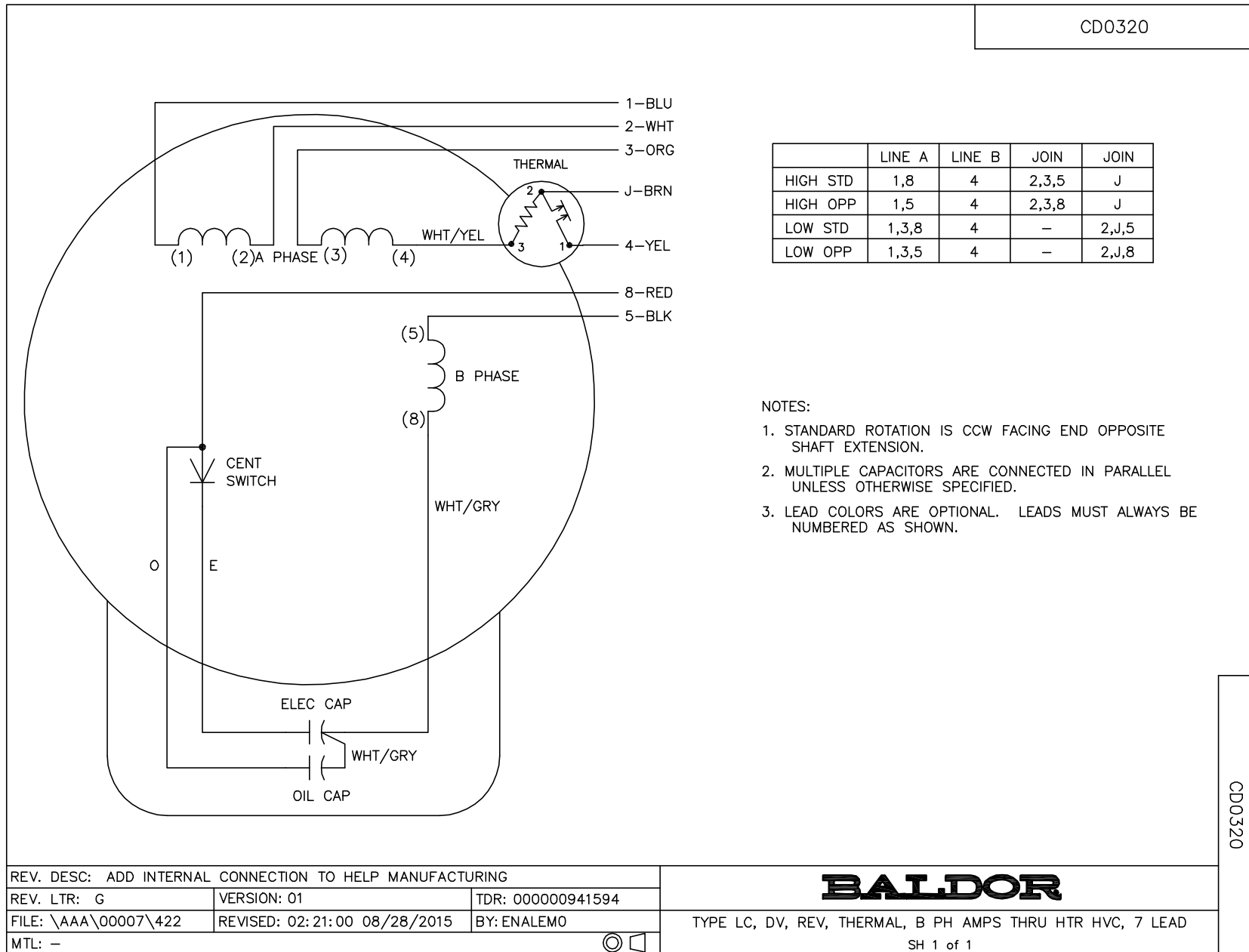
TORQUES (LB-FT): PO=5.43 PU=3.28 LR=5.8 LRA=73.7



3/26/2025 ACPERF, record # 48724



CD0320



	LINE A	LINE B	JOIN	JOIN
HIGH STD	1,8	4	2,3,5	J
HIGH OPP	1,5	4	2,3,8	J
LOW STD	1,3,8	4	-	2,J,5
LOW OPP	1,3,5	4	-	2,J,8

NOTES:

1. STANDARD ROTATION IS CCW FACING END OPPOSITE SHAFT EXTENSION.
2. MULTIPLE CAPACITORS ARE CONNECTED IN PARALLEL UNLESS OTHERWISE SPECIFIED.
3. LEAD COLORS ARE OPTIONAL. LEADS MUST ALWAYS BE NUMBERED AS SHOWN.

CD0320

REV. DESC: ADD INTERNAL CONNECTION TO HELP MANUFACTURING		
REV. LTR: G	VERSION: 01	TDR: 00000941594
FILE: \AAA\00007\422	REVISED: 02:21:00 08/28/2015	BY: ENALEMO
MTL: -		© □

BALDOR

TYPE LC, DV, REV, THERMAL, B PH AMPS THRU HTR HVC, 7 LEAD
SH 1 of 1