



---

# Customer information packet

## VEL11309A

1HP, 3480RPM, 1PH, 60HZ, 56C, 3524LC, OPEN, F1

Class - None

Division - Not Applicable

## Specifications

Enclosure	OPEN
Frame	56C
Frame Material	Steel
Frequency	60.00 Hz
Haz Area Class and Group	None
Haz Area Division	Not Applicable
Motor Letter Type	Cap Start, Cap Run
Output @ Frequency	1.000 HP @ 60 HZ
Phase	1
Synchronous Speed @ Frequency	3600 RPM @ 60 HZ
Voltage @ Frequency	115.0 V @ 60 HZ 230.0 V @ 60 HZ
Ambient Temperature	40 °C
Auxillary Box	No Auxillary Box
Auxillary Box Lead Termination	None
Base Indicator	No Mounting
Bearing Grease Type	Polyrex EM (-20F +300F)
Blower	None
Current @ Voltage	3.900 A @ 230.0 V 4.300 A @ 208.0 V 7.800 A @ 115.0 V
Design Code	N
Drip Cover	Drip Cover
Duty Rating	CONT
Efficiency @ 100% Load	82.0 %
Electrically Isolated Bearing	Not Electrically Isolated
Feedback Device	NO FEEDBACK
Front Shaft Indicator	None
Heater Indicator	No Heater
High Voltage Full Load Amps	3.9 a
Insulation Class	B
Inverter Code	Not Inverter

## Part detail

Revision	C
Type	AC
Mech. spec.	35EL001
Base	
Status	PRD/A
Elec. spec.	35WGG103
Layout	35LYEL001
Eff. date	04-30-2024
CD Diagram	CD0320
Poles	02
Leads	4#16 A&J,2#18 B PH,1#14 #4TH
Proprietary	False
Created date	02-07-2023

<b>KVA Code</b>	H
<b>Lifting Lugs</b>	No Lifting Lugs
<b>Locked Bearing Indicator</b>	Locked Bearing
<b>Motor Lead Quantity/Wire Size</b>	4 @ 16 AWG, A&J
<b>Motor Lead Termination</b>	None
<b>Motor Standards</b>	NEMA
<b>Motor Type</b>	3524LC
<b>Mounting Arrangement</b>	F1
<b>Number of Poles</b>	2
<b>Overall Length</b>	13.22 IN
<b>Power Factor</b>	99
<b>Product Family</b>	General Purpose
<b>Pulley End Bearing Type</b>	Ball
<b>Pulley Face Code</b>	C-Face
<b>Pulley Shaft Indicator</b>	Standard
<b>Rodent Screen</b>	None
<b>RoHS Status</b>	ROHS COMPLIANT
<b>Service Factor</b>	1.25
<b>Shaft Diameter</b>	0.625 IN
<b>Shaft Ground Indicator</b>	No Shaft Grounding
<b>Shaft Rotation</b>	Reversible
<b>Shaft Slinger Indicator</b>	No Slinger
<b>Speed</b>	3480 rpm
<b>Speed Code</b>	Single Speed
<b>Starting Method</b>	Direct on line
<b>Thermal Device - Bearing</b>	None
<b>Thermal Device - Winding</b>	None
<b>Vibration Sensor Indicator</b>	No Vibration Sensor
<b>Winding Thermal 1</b>	Automatic Thermal Overload
<b>Winding Thermal 1 Location</b>	SB
<b>Winding Thermal 2</b>	None

**Nameplate**

**NP4423B14M36L**

<b>CAT #</b>	VEL11309A		<b>WGT</b>	43	<b>LBS</b>	
<b>SPEC</b>	35EL001G103G1		<b>ENCL</b>	OPEN		
<b>SER #</b>		<b>CC</b>		<b>IP</b>	23	
<b>HP</b>	1	<b>NEMA NOM. EFF</b>	82			
<b>VOLTS</b>	115/230					
<b>AMPS</b>	7.8/3.9		<b>PF</b>	99		
<b>RATING</b>	40C AMB-CONT					
<b>RPM</b>	3480					
<b>FRAME</b>	56C	<b>HZ</b>	60	<b>CODE</b>	H	<b>CLASS</b> B
<b>SER.F.</b>	1.25	<b>SF AMP</b>	10/5	<b>PH</b>	1	<b>DES</b> N
<b>DE</b>	6205	<b>ODE</b>	6203			
<b>LUBRICATION</b>	POLYREX EM					
				<b>QR</b>		
<b>YR</b>						

**AC Induction Motor Performance Data**

Record # 97104

Typical performance - not guaranteed values

Winding: 35WGG103-R002		Type: 3524LC	Enclosure: OPEN		
<b>Nameplate Data</b>			<b>115 V, 60 Hz: Low Voltage Connection</b>		
Rated Output (HP)	1	Full Load Torque	1.51 LB-FT		
Volts	115/230	Start Configuration	direct on line		
Full Load Amps	7.8/3.9	Breakdown Torque	4.54 LB-FT		
R.P.M.	3480	Pull-up Torque	2.68 LB-FT		
Hz	60 Phase	1	Locked-rotor Torque	5.62 LB-FT	
NEMA Design Code	N	KVA Code	H	Starting Current	60 A
Service Factor (S.F.)	1.25	No-load Current	1.8 A		
NEMA Nom. Eff.	82	Power Factor	99	Line-line Res. @ 25°C	0.599 Ω A Ph 0.913 Ω B Ph
Rating - Duty	40C	AMB-CONT	Temp. Rise @ Rated Load	11°C	
S.F. Amps	10/5	Temp. Rise @ S.F. Load	15°C		
		Locked-rotor Power Factor	99.9		
		Rotor inertia	0.0516 lb-ft <sup>2</sup>		

**Load Characteristics 115 V, 60 Hz, 1 HP**

% of Rated Load	25	50	75	100	125	150	S.F.
Power Factor	90	98	100	100	99	99	99
Efficiency	67.6	79.9	83	83.5	81.9	78.7	81.9
Speed	3573	3548	3522	3492	3452	3406	3452
Line amperes	2.72	4.17	5.87	7.77	9.99	12.5	9.99

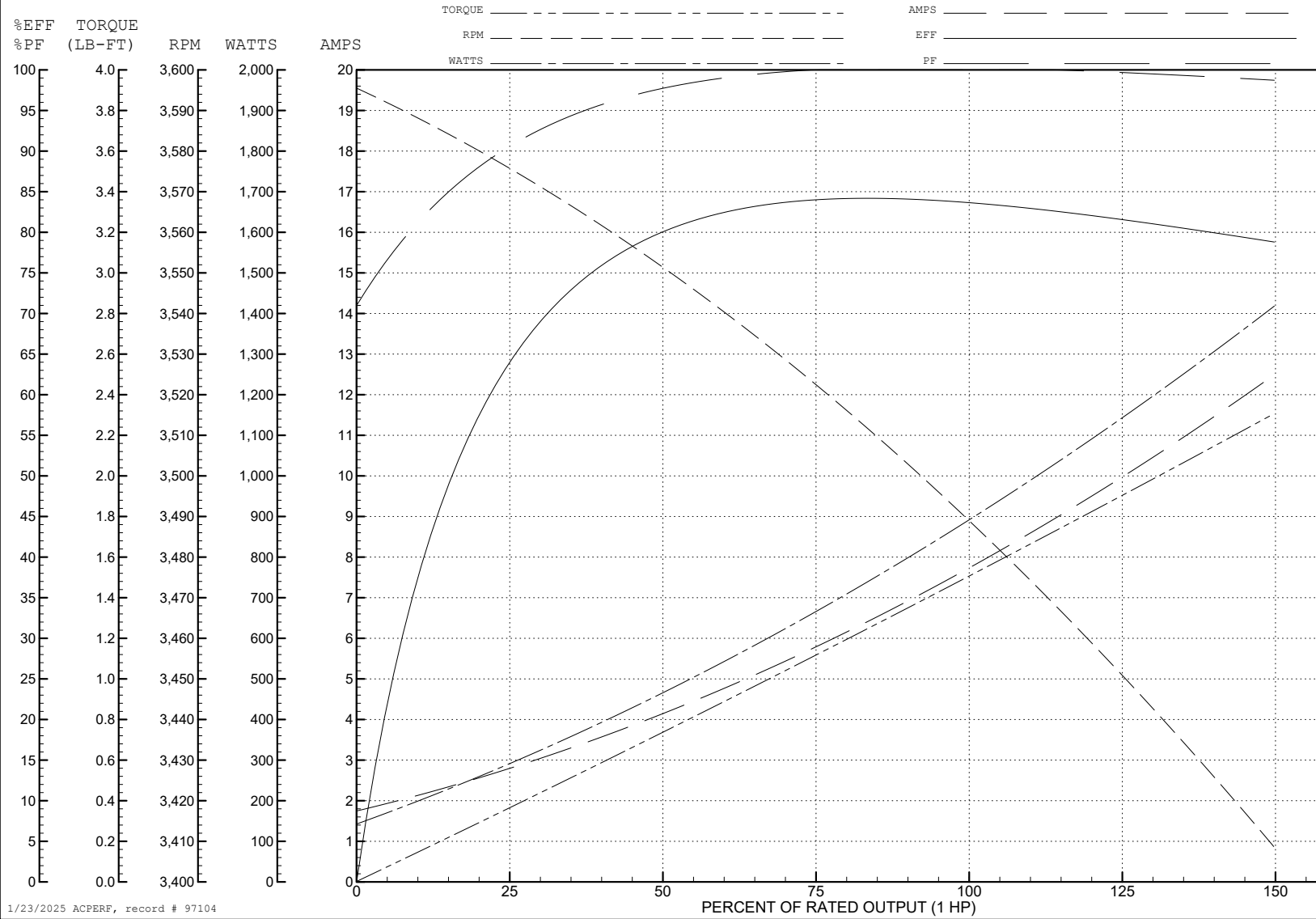
ABB Motors and Mechanical Inc.

WINDING # 35WGG103

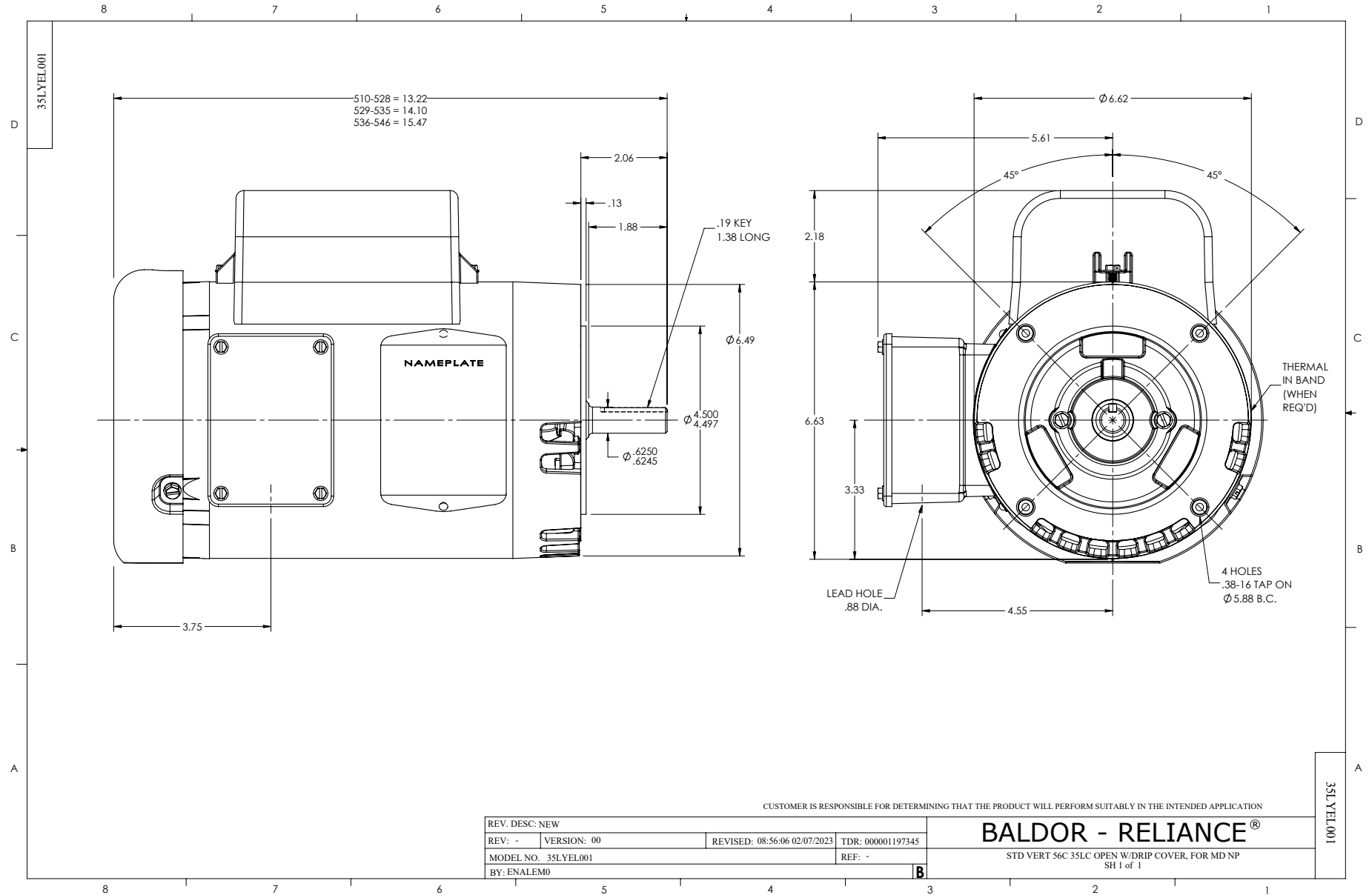
Typical performance - not guaranteed values.

1 HP 1 PH 60 HZ 3480 RPM 115 V 3524LC

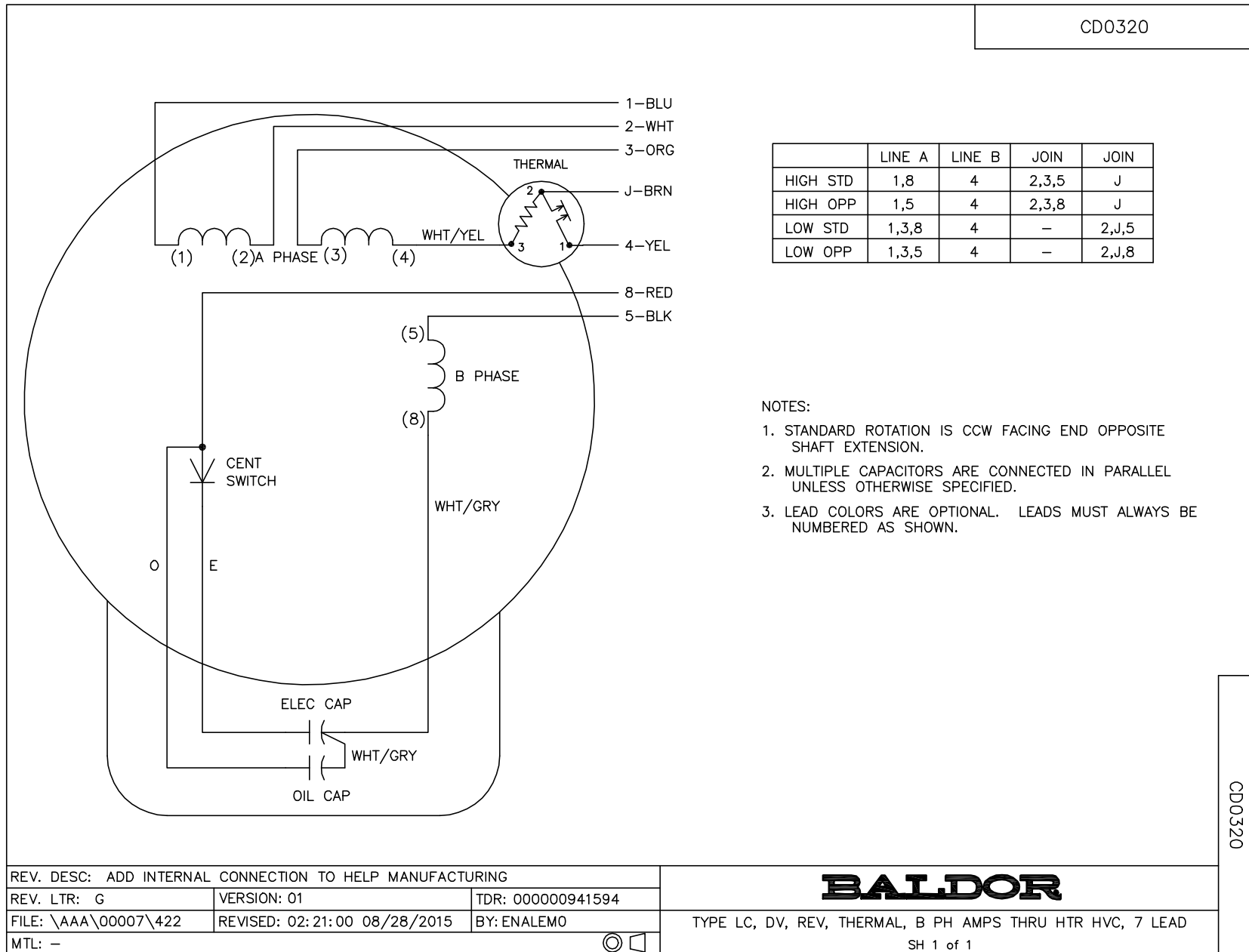
TORQUES (LB-FT): PO=4.54 PU=2.68 LR=5.62 LRA=60



1/23/2025 ACPERF, record # 97104



CD0320



	LINE A	LINE B	JOIN	JOIN
HIGH STD	1,8	4	2,3,5	J
HIGH OPP	1,5	4	2,3,8	J
LOW STD	1,3,8	4	-	2,J,5
LOW OPP	1,3,5	4	-	2,J,8

**NOTES:**

1. STANDARD ROTATION IS CCW FACING END OPPOSITE SHAFT EXTENSION.
2. MULTIPLE CAPACITORS ARE CONNECTED IN PARALLEL UNLESS OTHERWISE SPECIFIED.
3. LEAD COLORS ARE OPTIONAL. LEADS MUST ALWAYS BE NUMBERED AS SHOWN.

CD0320

REV. DESC: ADD INTERNAL CONNECTION TO HELP MANUFACTURING		
REV. LTR: G	VERSION: 01	TDR: 00000941594
FILE: \AAA\00007\422	REVISED: 02:21:00 08/28/2015	BY: ENALEMO
MTL: -		

**BALDOR**

TYPE LC, DV, REV, THERMAL, B PH AMPS THRU HTR HVC, 7 LEAD  
SH 1 of 1