



Customer information packet

VEL11308

.75HP, 1160RPM, 1PH, 60HZ, 56C, 3530LC, ODTF, F

Class - None

Division - Not Applicable

Specifications

Enclosure	ODTF
Frame	56C
Frame Material	Steel
Frequency	60.00 Hz
Haz Area Class and Group	None
Haz Area Division	Not Applicable
Motor Letter Type	Cap Start, Cap Run
Output @ Frequency	.750 HP @ 60 HZ
Phase	1
Synchronous Speed @ Frequency	1200 RPM @ 60 HZ
Voltage @ Frequency	115.0 V @ 60 HZ 230.0 V @ 60 HZ
Agency Approvals	CURUSEEV
Ambient Temperature	40 °C
Auxillary Box	No Auxillary Box
Auxillary Box Lead Termination	None
Base Indicator	No Mounting
Bearing Grease Type	Polyrex EM (-20F +300F)
Blower	None
Current @ Voltage	3.200 A @ 230.0 V 6.300 A @ 115.0 V
Design Code	L
Drip Cover	Drip Cover
Duty Rating	CONT
Efficiency @ 100% Load	81.5 %
Electrically Isolated Bearing	Not Electrically Isolated
Feedback Device	NO FEEDBACK
Front Shaft Indicator	None
Heater Indicator	No Heater
High Voltage Full Load Amps	3.2 a
Insulation Class	F
Inverter Code	Not Inverter

Part detail

Revision	G
Type	AC
Mech. spec.	35E019
Base	
Status	PRD/A
Elec. spec.	35WGG064
Layout	35LYE019
Eff. date	07-02-2024
CD Diagram	CD0055
Poles	06
Leads	6#18
Proprietary	False
Created date	08-01-2022

IP Rating	NONE
KVA Code	H
Lifting Lugs	No Lifting Lugs
Locked Bearing Indicator	Locked Bearing
Motor Lead Quantity/Wire Size	6 @ 18 AWG
Motor Lead Termination	Flying Leads
Motor Standards	NEMA
Motor Type	3530LC
Mounting Arrangement	F1
Number of Poles	6
Overall Length	14.12 IN
Power Factor	95
Product Family	General Purpose
Pulley End Bearing Type	Ball
Pulley Face Code	C-Face
Pulley Shaft Indicator	Standard
Rodent Screen	None
Service Factor	1.00
Shaft Diameter	0.625 IN
Shaft Ground Indicator	No Shaft Grounding
Shaft Rotation	Reversible
Shaft Slinger Indicator	No Slinger
Speed	1160 rpm
Speed Code	Single Speed
Starting Method	Direct on line
Thermal Device - Bearing	None
Thermal Device - Winding	None
Vibration Sensor Indicator	No Vibration Sensor
Winding Thermal 1	None
Winding Thermal 2	None

Nameplate

NP3155L									
CAT.NO.	VEL11308								
SPEC.	35E019G064								
HP	.75								
VOLTS	115/230								
AMP	6.3/3.2								
RPM	1160								
FRAME	56C		HZ	60		PH	1		
SER.F.	1.00	CODE	H	DES	L	CL	F		
F.L. AVG. EFF.	81.5	PF	95						
RATING	40C AMB-CONT								
CC									
DE	6205		ODE	6203					
ENCL	ODTF	SN							

AC Induction Motor Performance Data

Record # 88895

Typical performance - not guaranteed values

Winding: 35WGG064-R002		Type: 3530LC	Enclosure: OPEN		
Nameplate Data			115 V, 60 Hz: Low Voltage Connection		
Rated Output (HP)	.75	Full Load Torque	3.4 LB-FT		
Volts	115/230	Start Configuration	direct on line		
Full Load Amps	6.3/3.2	Breakdown Torque	8.03 LB-FT		
R.P.M.	1160	Pull-up Torque	5.18 LB-FT		
Hz	60 Phase	1	Locked-rotor Torque	11.2 LB-FT	
NEMA Design Code	L	KVA Code	H	Starting Current	44.2 A
Service Factor (S.F.)			1	No-load Current	1.97 A
NEMA Nom. Eff.	81.5	Power Factor	95	Line-line Res. @ 25°C	1.4 Ω A Ph 1.84 Ω B Ph
Rating - Duty		40C AMB-CONT		Temp. Rise @ Rated Load	39°C
				Locked-rotor Power Factor	98.1
				Rotor inertia	0.217 lb-ft ²

Load Characteristics 115 V, 60 Hz, 0.75 HP

% of Rated Load	25	50	75	100	125	150
Power Factor	84	91	94	95	95	93
Efficiency	54.8	72.8	79.9	81.6	79.7	73.7
Speed	1190	1182	1172	1160	1143	1115
Line amperes	2.66	3.66	4.84	6.28	8.03	10.6

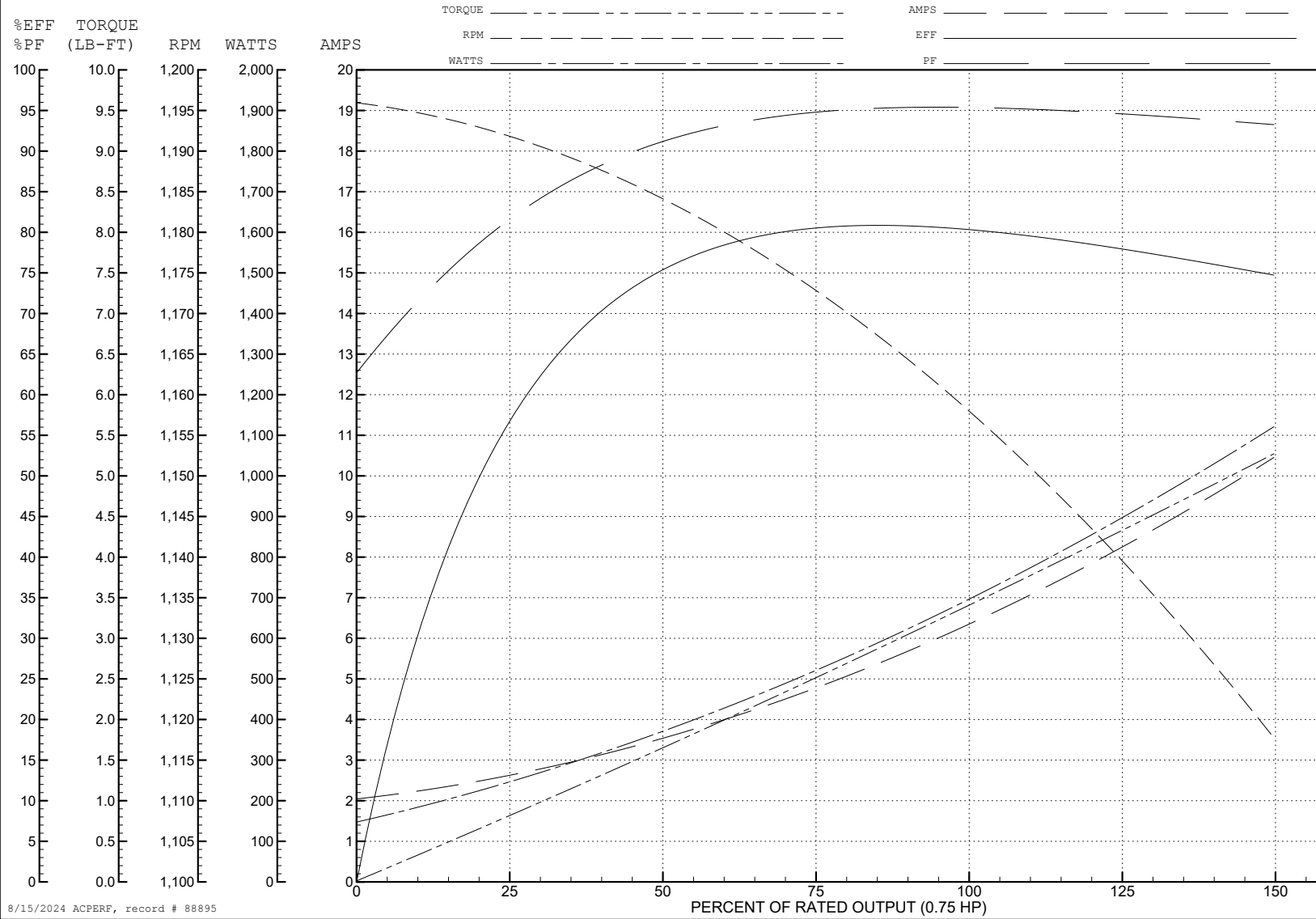
ABB Motors and Mechanical Inc.

WINDING # 35WGG064

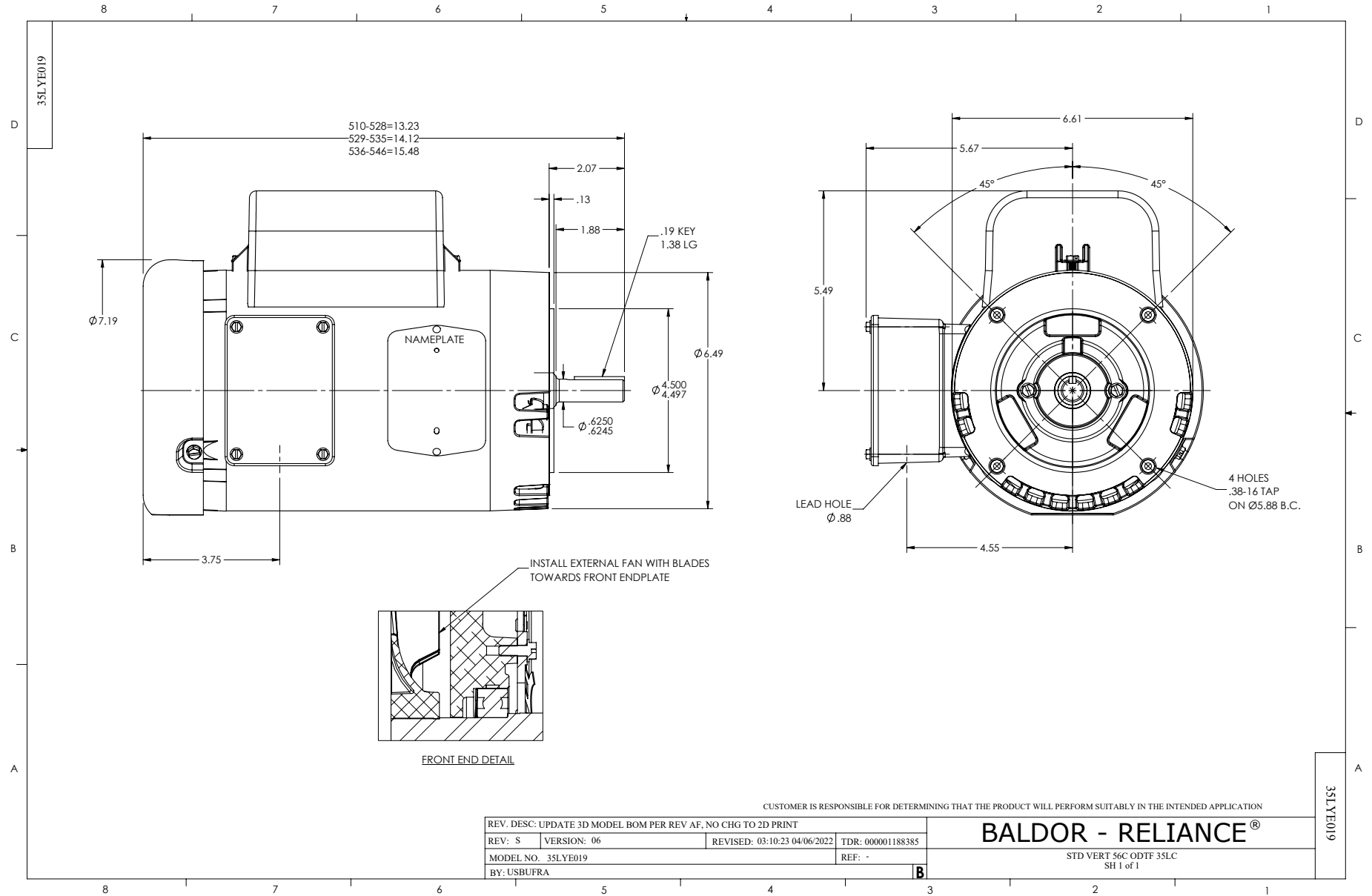
Typical performance - not guaranteed values.

0.75 HP 1 PH 60 HZ 1160 RPM 115 V 3530LC

TORQUES (LB-FT): PO=8.03 PU=5.18 LR=11.2 LRA=44.2



8/15/2024 ACPERF, record # 88895



CD0055

