

# ABB BALDOR RELIANCE III

---

## Customer information packet

VEL11307

.75HP, 1755RPM, 1PH, 60HZ, 56C, 3522LC, OPEN, F

Class - None

Division - Not Applicable

**Specifications**

<b>Enclosure</b>	OPEN
<b>Frame</b>	56C
<b>Frame Material</b>	Steel
<b>Frequency</b>	60.00 Hz
<b>Haz Area Class and Group</b>	None
<b>Haz Area Division</b>	Not Applicable
<b>Motor Letter Type</b>	Cap Start, Cap Run
<b>Output @ Frequency</b>	.750 HP @ 60 HZ
<b>Phase</b>	1
<b>Synchronous Speed @ Frequency</b>	1800 RPM @ 60 HZ
<b>Voltage @ Frequency</b>	115.0 V @ 60 HZ 230.0 V @ 60 HZ
<b>Agency Approvals</b>	CURUSEEV
<b>Ambient Temperature</b>	40 °C
<b>Auxiliary Box</b>	NO AUXILLARY BOX
<b>Auxiliary Box Lead Termination</b>	None
<b>Base Indicator</b>	No Mounting
<b>Bearing Grease Type</b>	Polyrex EM (-20F +300F)
<b>Blower</b>	None
<b>Current @ Voltage</b>	6.100 A @ 115.0 V 3.350 A @ 208.0 V 3.050 A @ 230.0 V
<b>Design Code</b>	N
<b>Drip Cover</b>	Drip Cover
<b>Duty Rating</b>	CONT
<b>Efficiency @ 100% Load</b>	82.5 %
<b>Electrically Isolated Bearing</b>	Not Electrically Isolated
<b>Feedback Device</b>	NO FEEDBACK
<b>Front Shaft Indicator</b>	None
<b>Heater Indicator</b>	No Heater
<b>High Voltage Full Load Amps</b>	3.1 a
<b>Insulation Class</b>	F

**Part Detail**

<b>Revision</b>	C
<b>Type</b>	AC
<b>Mech. spec.</b>	35E4016
<b>Base</b>	
<b>Status</b>	PRD/A
<b>Elec. spec.</b>	35WGL999
<b>Layout</b>	35LYE4016
<b>Eff. date</b>	05-16-2024
<b>CD Diagram</b>	CD0055
<b>Poles</b>	04
<b>Leads</b>	6#18
<b>Proprietary</b>	False
<b>Created date</b>	08-11-2022

<b>Inverter Code</b>	Not Inverter
<b>KVA Code</b>	L
<b>Lifting Lugs</b>	No Lifting Lugs
<b>Locked Bearing Indicator</b>	Locked Bearing
<b>Motor Lead Quantity/Wire Size</b>	6 @ 18 AWG
<b>Motor Lead Termination</b>	Flying Leads
<b>Motor Standards</b>	NEMA
<b>Motor Type</b>	3522LC
<b>Mounting Arrangement</b>	F1
<b>Number of Poles</b>	4
<b>Overall Length</b>	13.22 IN
<b>Power Factor</b>	95
<b>Product Family</b>	General Purpose
<b>Pulley End Bearing Type</b>	Ball
<b>Pulley Face Code</b>	C-Face
<b>Pulley Shaft Indicator</b>	Standard
<b>Rodent Screen</b>	None
<b>Service Factor</b>	1.25
<b>Shaft Diameter</b>	0.625 IN
<b>Shaft Ground Indicator</b>	No Shaft Grounding
<b>Shaft Rotation</b>	Reversible
<b>Shaft Slinger Indicator</b>	No Slinger
<b>Speed</b>	1755 rpm
<b>Speed Code</b>	Single Speed
<b>Starting Method</b>	Direct on line
<b>Thermal Device - Bearing</b>	None
<b>Thermal Device - Winding</b>	None
<b>Vibration Sensor Indicator</b>	No Vibration Sensor
<b>Winding Thermal 1</b>	None
<b>Winding Thermal 2</b>	None

**Nameplate**

<b>NP3155L</b>									
<b>CAT.NO.</b>	VEL11307								
<b>SPEC.</b>	35E4016L999								
<b>HP</b>	.75								
<b>VOLTS</b>	115/230								
<b>AMP</b>	6.1/3.05								
<b>RPM</b>	1755								
<b>FRAME</b>	56C	<b>HZ</b>	60	<b>PH</b>	1				
<b>SER.F.</b>	1.25	<b>CODE</b>	L	<b>DES</b>	N	<b>CL</b>	F		
<b>F.L. AVG. EFF.</b>	82.5	<b>PF</b>	95						
<b>RATING</b>	40C AMB-CONT								
<b>CC</b>									
<b>DE</b>	6205	<b>ODE</b>	6203						
<b>ENCL</b>	OPEN	<b>SN</b>							
	SFA 7.6/3.8								

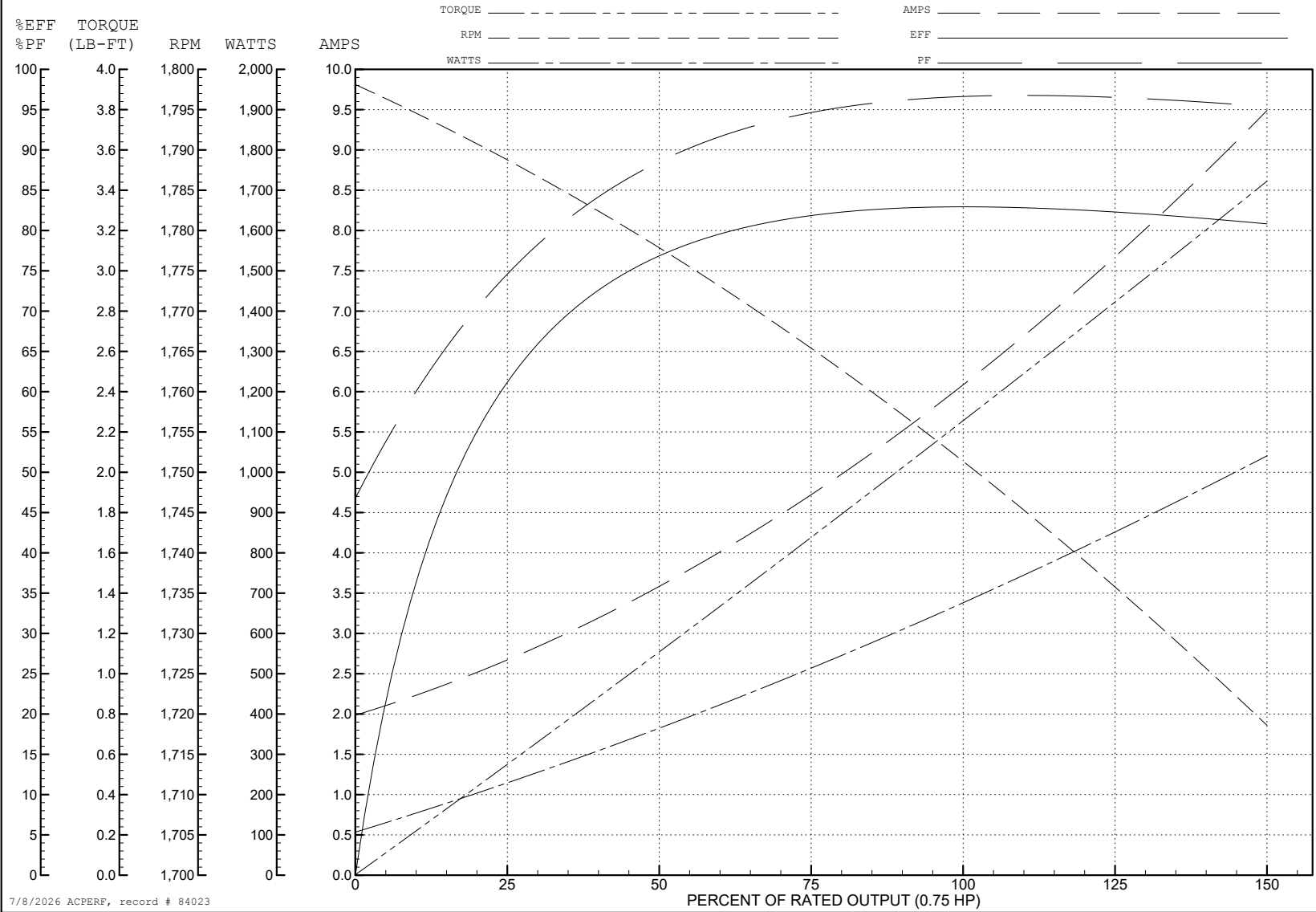
ABB Motors and Mechanical Inc.

WINDING # 35WGL999

0.75 HP 1 PH 60 HZ 1750 RPM 115 V 3522LC

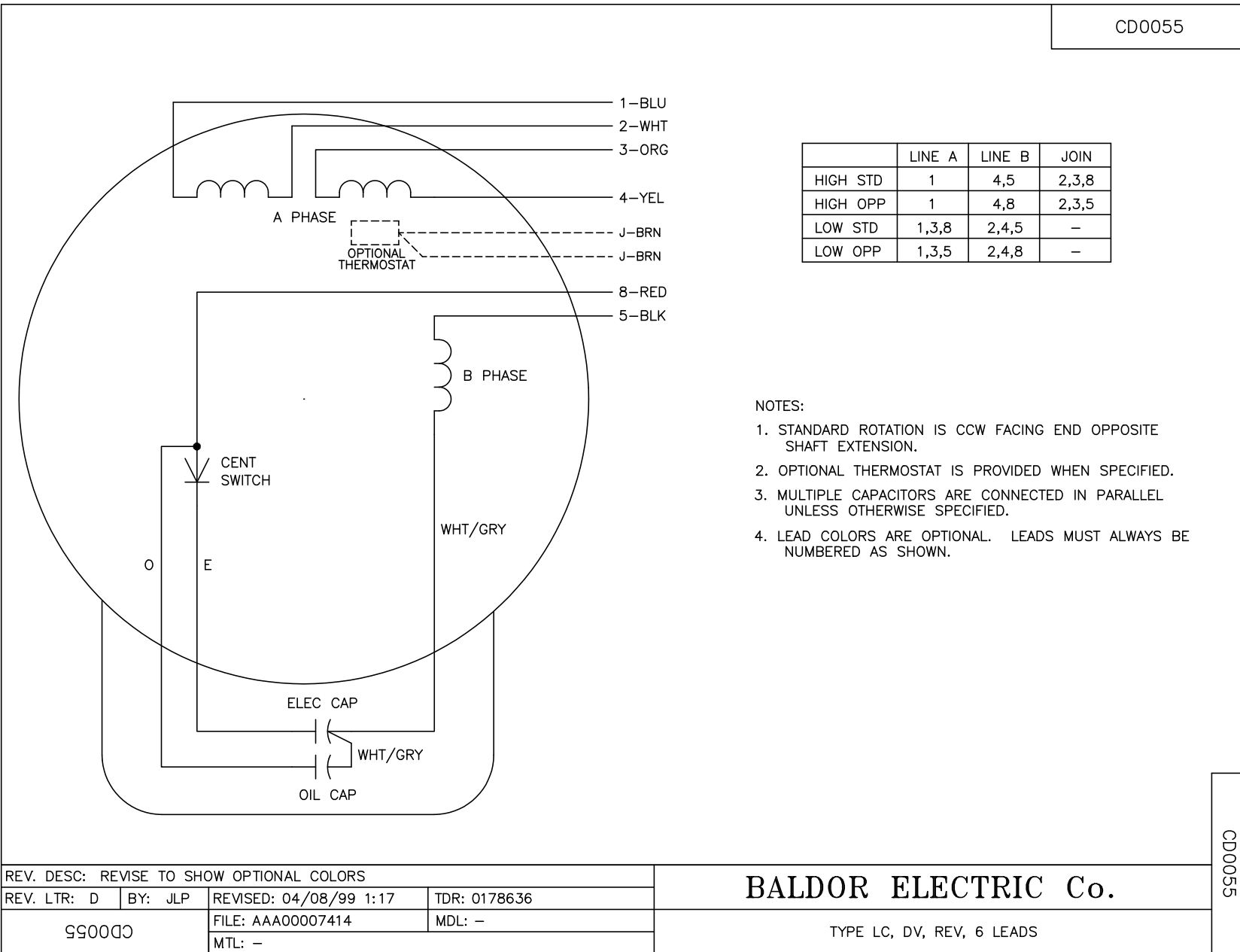
Typical performance - not guaranteed values.

TORQUES (LB-FT): PO=6.17 PU=5.27 LR=9.16 LRA=59





CD0055



CD0055

REV. DESC: REVISE TO SHOW OPTIONAL COLORS			
REV. LTR: D	BY: JLP	REVISED: 04/08/99 1:17	TDR: 0178636
C00000		FILE: AAA00007414	MDL: -
		MTL: -	

**BALDOR ELECTRIC Co.**

TYPE LC, DV, REV, 6 LEADS