

**BALDOR • RELIANCE**

---

# Customer information packet

## VEL11306A

.75HP, 3450RPM, 1PH, 60HZ, 56C, 3428LC, OPEN, F

Class - None

Division - Not Applicable

## Specifications

Enclosure	OPEN
Frame	56C
Frame Material	Steel
Frequency	60.00 Hz
Haz Area Class and Group	None
Haz Area Division	Not Applicable
Motor Letter Type	Cap Start, Cap Run
Output @ Frequency	.750 HP @ 60 HZ
Phase	1
Synchronous Speed @ Frequency	3600 RPM @ 60 HZ
Voltage @ Frequency	115.0 V @ 60 HZ 230.0 V @ 60 HZ
Ambient Temperature	40 °C
Auxillary Box	No Auxillary Box
Auxillary Box Lead Termination	None
Base Indicator	No Mounting
Bearing Grease Type	Polyrex EM (-20F +300F)
Blower	None
Current @ Voltage	3.300 A @ 230.0 V 4.700 A @ 208.0 V 6.300 A @ 115.0 V
Design Code	N
Drip Cover	Drip Cover
Duty Rating	CONT
Efficiency @ 100% Load	76.2 %
Electrically Isolated Bearing	Not Electrically Isolated
Feedback Device	NO FEEDBACK
Front Shaft Indicator	None
Heater Indicator	No Heater
High Voltage Full Load Amps	3.3 a
Insulation Class	B
Inverter Code	Not Inverter

## Part detail

Revision	D
Type	AC
Mech. spec.	34EL001
Base	
Status	PRD/A
Elec. spec.	34WGR220
Layout	34LYEL001
Eff. date	10-29-2024
CD Diagram	CD0320
Poles	02
Leads	6#18,1#16 #4TH
Proprietary	False
Created date	02-07-2023

<b>KVA Code</b>	J
<b>Lifting Lugs</b>	No Lifting Lugs
<b>Locked Bearing Indicator</b>	Locked Bearing
<b>Motor Lead Quantity/Wire Size</b>	6 @ 18 AWG
<b>Motor Lead Termination</b>	Flying Leads
<b>Motor Standards</b>	NEMA
<b>Motor Type</b>	3428LC
<b>Mounting Arrangement</b>	F1
<b>Number of Poles</b>	2
<b>Overall Length</b>	14.04 IN
<b>Power Factor</b>	95
<b>Product Family</b>	General Purpose
<b>Pulley End Bearing Type</b>	Ball
<b>Pulley Face Code</b>	C-Face
<b>Pulley Shaft Indicator</b>	Standard
<b>Rodent Screen</b>	None
<b>RoHS Status</b>	ROHS COMPLIANT
<b>Service Factor</b>	1.25
<b>Shaft Diameter</b>	0.625 IN
<b>Shaft Ground Indicator</b>	No Shaft Grounding
<b>Shaft Rotation</b>	Reversible
<b>Shaft Slinger Indicator</b>	No Slinger
<b>Speed</b>	3450 rpm
<b>Speed Code</b>	Single Speed
<b>Starting Method</b>	Direct on line
<b>Thermal Device - Bearing</b>	None
<b>Thermal Device - Winding</b>	None
<b>Vibration Sensor Indicator</b>	No Vibration Sensor
<b>Winding Thermal 1</b>	Automatic Thermal Overload
<b>Winding Thermal 1 Location</b>	SB
<b>Winding Thermal 2</b>	None

**Nameplate**

<b>NP4423B14M36L</b>											
<b>CAT #</b>	VEL11306A			<b>WGT</b>	39	<b>LBS</b>					
<b>SPEC</b>	34EL001R220G1			<b>ENCL</b>	OPEN						
<b>SER #</b>				<b>CC</b>		<b>IP</b>	23				
<b>HP</b>	.75	<b>NEMA NOM. EFF</b>			76.2						
<b>VOLTS</b>	115/230										
<b>AMPS</b>	6.3/3.3			<b>PF</b>	95						
<b>RATING</b>	40C AMB-CONT										
<b>RPM</b>	3450										
<b>FRAME</b>	56C	<b>HZ</b>	60	<b>CODE</b>	J	<b>CLASS</b>	B				
<b>SER.F.</b>	1.25	<b>SF AMP</b>	8.4/4.2	<b>PH</b>	1	<b>DES</b>	N				
<b>DE</b>	6203		<b>ODE</b>	6203							
<b>LUBRICATION</b>	POLYREX EM										
<b>YR</b>											

**AC Induction Motor Performance Data**

Record # 52884

Typical performance - not guaranteed values

<b>Winding: 34WGR220-R001</b>		<b>Type: 3428LC</b>		<b>Enclosure: OPEN</b>	
<b>Nameplate Data</b>			<b>230 V, 60 Hz: High Voltage Connection</b>		
<b>Rated Output (HP)</b>	.75	<b>Full Load Torque</b>	1.14 LB-FT		
<b>Volts</b>	115/230	<b>Start Configuration</b>	direct on line		
<b>Full Load Amps</b>	6.3/3.3	<b>Breakdown Torque</b>	3.88 LB-FT		
<b>R.P.M.</b>	3450	<b>Pull-up Torque</b>	2.07 LB-FT		
<b>Hz</b>	60 <b>Phase</b>	1	<b>Locked-rotor Torque</b>	3.92 LB-FT	
<b>NEMA Design Code</b>	N <b>KVA Code</b>	J	<b>Starting Current</b>	24.8 A	
<b>Service Factor (S.F.)</b>		1.25	<b>No-load Current</b>	0.961 A	
<b>NEMA Nom. Eff.</b>	76.2 <b>Power Factor</b>	95	<b>Line-line Res. @ 25°C</b>	2.4012 Ω A Ph 2.118 Ω B Ph	
<b>Rating - Duty</b>		40C AMB-CONT	<b>Temp. Rise @ Rated Load</b>	12°C	
<b>S.F. Amps</b>		8.4/4.2	<b>Temp. Rise @ S.F. Load</b>	16°C	

**Load Characteristics 230 V, 60 Hz, 0.75 HP**

<b>% of Rated Load</b>	<b>25</b>	<b>50</b>	<b>75</b>	<b>100</b>	<b>125</b>	<b>150</b>	<b>S.F.</b>
<b>Power Factor</b>	77	89	93	95	95	95	95
<b>Efficiency</b>	62.6	74.2	78.2	77.5	76.1	74.7	76.1
<b>Speed</b>	3567.6	3537.1	3504.2	3465	3419.8	3372.1	3420
<b>Line amperes</b>	1.23	1.84	2.51	3.32	4.21	5.14	4.21

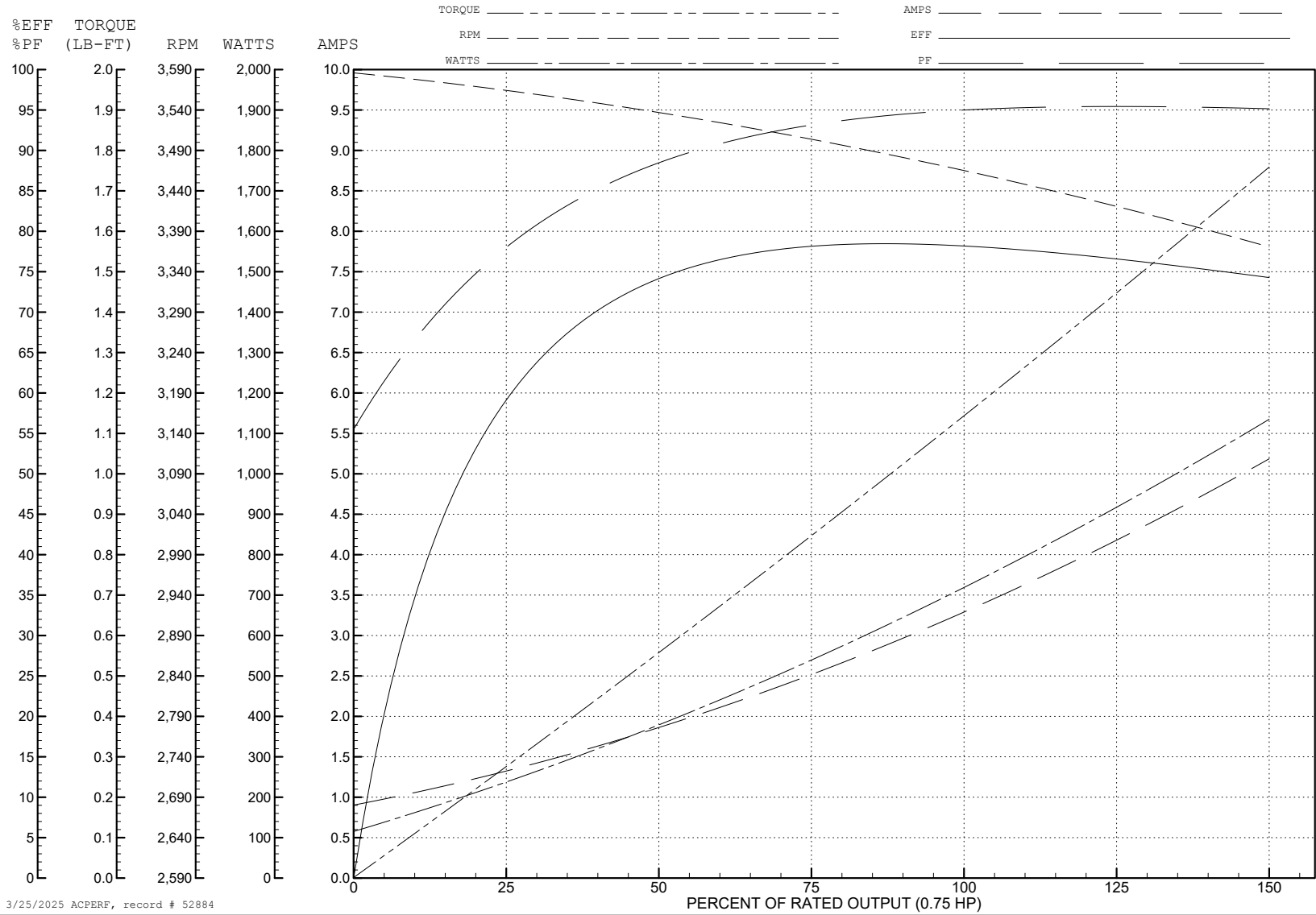
ABB Motors and Mechanical Inc.

WINDING # 34WGR220

Typical performance - not guaranteed values.

0.75 HP 1 PH 60 HZ 3450 RPM 230 V 3428LC

TORQUES (LB-FT): PO=3.88 PU=2.07 LR=3.92 LRA=24.8



3/25/2025 ACPERF, record # 52884

**AC Induction Motor Performance Data**

Record # 52885

Typical performance - not guaranteed values

Winding: 34WGR220-R001		Type: 3428LC	Enclosure: OPEN		
<b>Nameplate Data</b>			<b>115 V, 60 Hz: Low Voltage Connection</b>		
Rated Output (HP)	.75	Full Load Torque	1.13 LB-FT		
Volts	115/230	Start Configuration	direct on line		
Full Load Amps	6.3/3.3	Breakdown Torque	3.28 LB-FT		
R.P.M.	3450	Pull-up Torque	2.55 LB-FT		
Hz	60 Phase	1	Locked-rotor Torque	3.81 LB-FT	
NEMA Design Code	N	KVA Code	J	Starting Current	49.8 A
Service Factor (S.F.)	1.25	No-load Current	1.82 A		
NEMA Nom. Eff.	76.2	Power Factor	95	Line-line Res. @ 25°C	0.58846 Ω A Ph 2.1681 Ω B Ph
Rating - Duty	40C	AMB-CONT	Temp. Rise @ Rated Load	27°C	
S.F. Amps	8.4/4.2	Temp. Rise @ S.F. Load	36°C		

**Load Characteristics 115 V, 60 Hz, 0.75 HP**

% of Rated Load	25	50	75	100	125	150	S.F.
Power Factor	80	89	93	94	95	95	95
Efficiency	60.3	73.2	77.3	78.2	77.3	74.8	77.3
Speed	3570	3543.5	3508.4	3477.4	3436.9	3387.6	3437
Line amperes	2.54	3.7	5.12	6.53	8.27	10.3	8.27

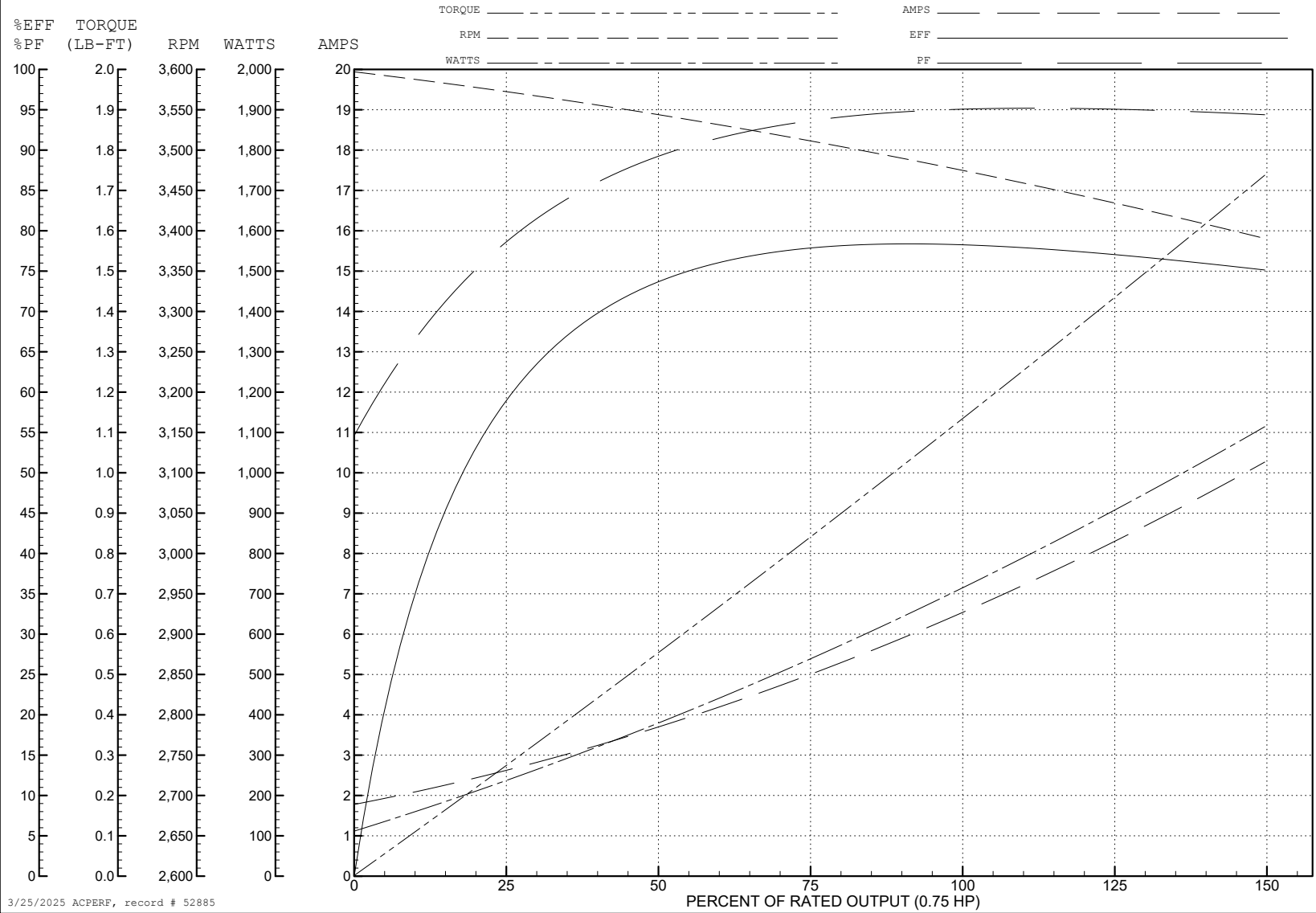
ABB Motors and Mechanical Inc.

WINDING # 34WGR220

Typical performance - not guaranteed values.

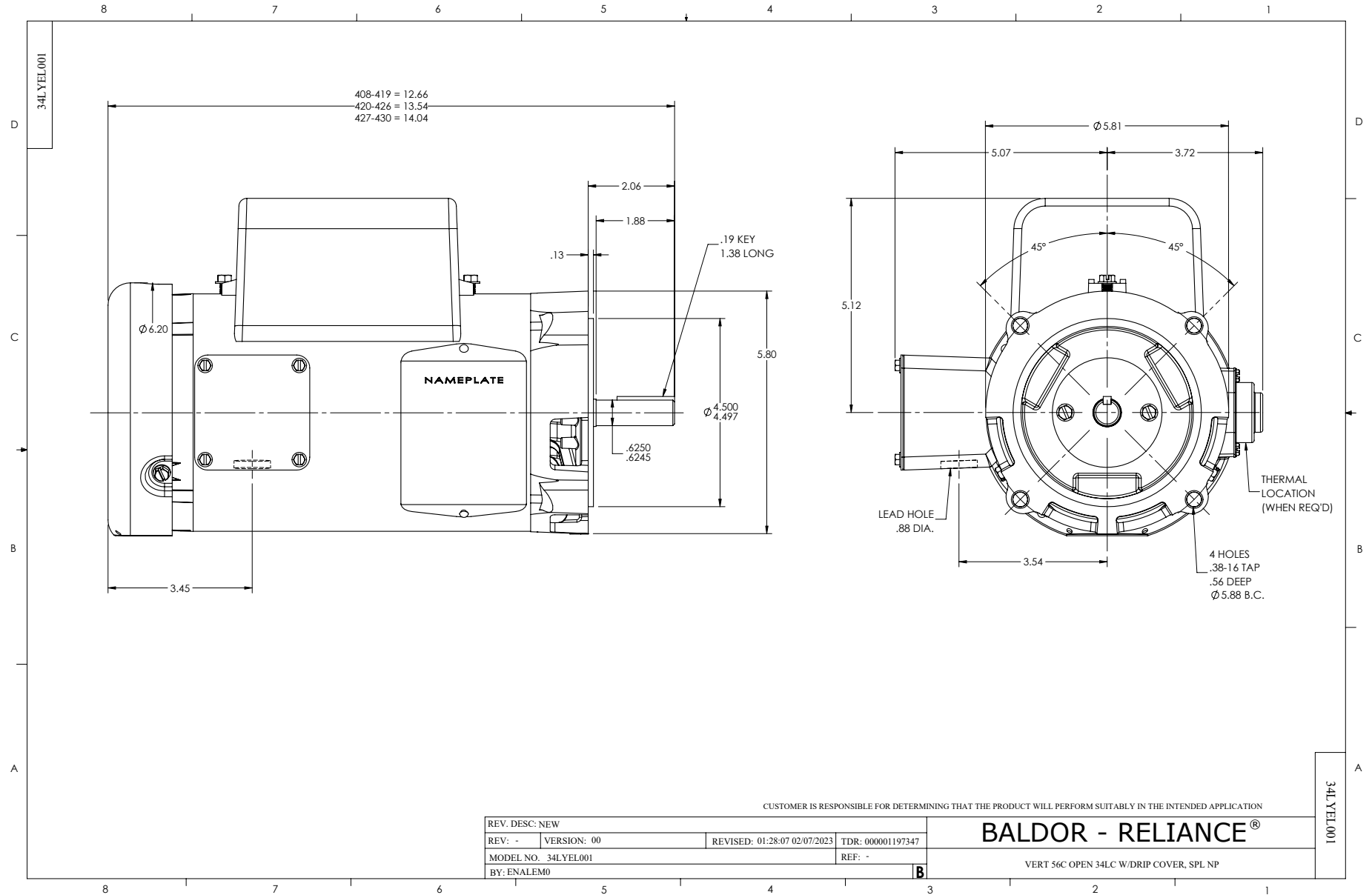
0.75 HP 1 PH 60 HZ 3450 RPM 115 V 3428LC

TORQUES (LB-FT): PO=3.28 PU=2.55 LR=3.81 LRA=49.8

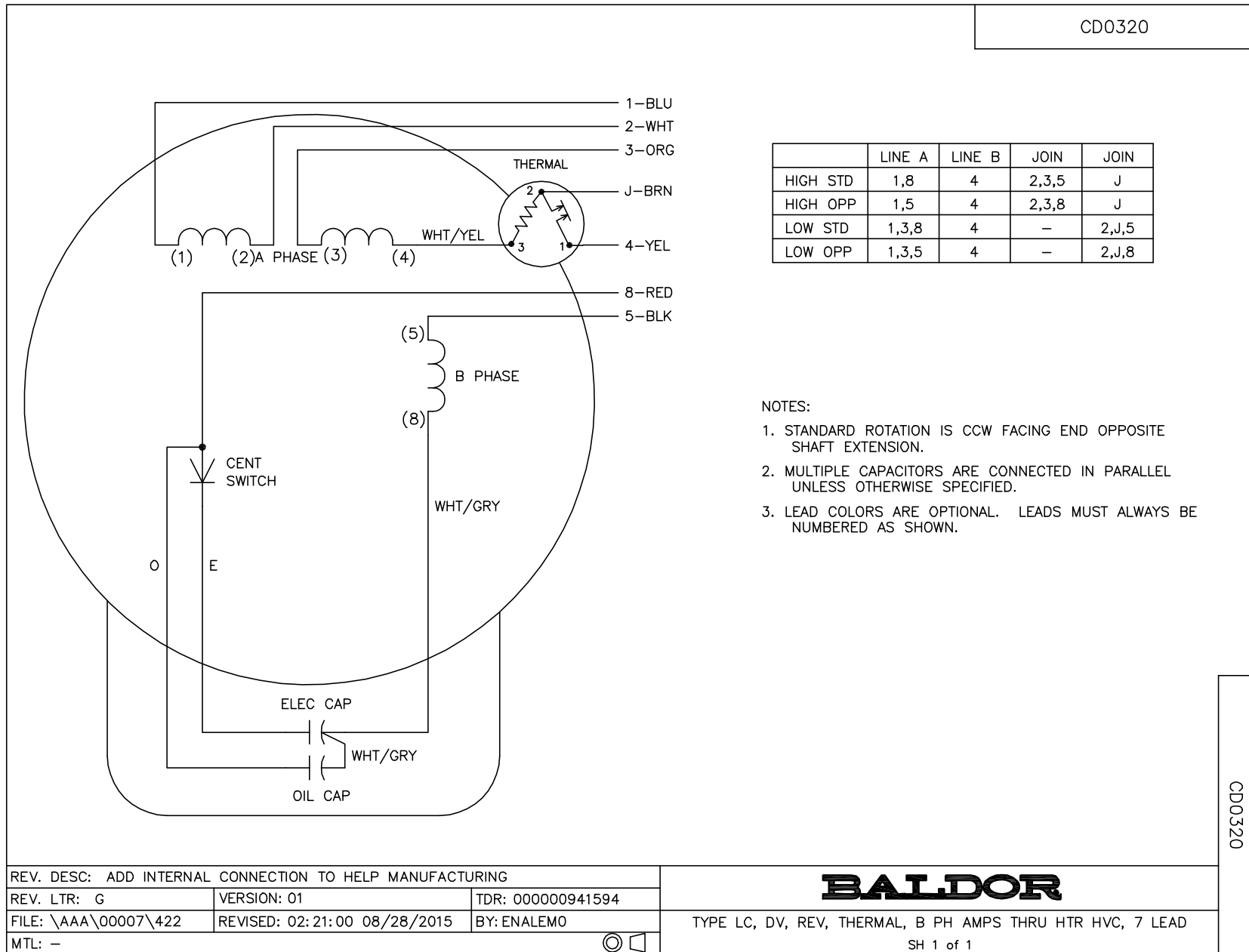


3/25/2025 ACPERF, record # 52885





CD0320



	LINE A	LINE B	JOIN	JOIN
HIGH STD	1,8	4	2,3,5	J
HIGH OPP	1,5	4	2,3,8	J
LOW STD	1,3,8	4	-	2,J,5
LOW OPP	1,3,5	4	-	2,J,8

**NOTES:**

1. STANDARD ROTATION IS CCW FACING END OPPOSITE SHAFT EXTENSION.
2. MULTIPLE CAPACITORS ARE CONNECTED IN PARALLEL UNLESS OTHERWISE SPECIFIED.
3. LEAD COLORS ARE OPTIONAL. LEADS MUST ALWAYS BE NUMBERED AS SHOWN.

CD0320

REV. DESC: ADD INTERNAL CONNECTION TO HELP MANUFACTURING		
REV. LTR: G	VERSION: 01	TDR: 00000941594
FILE: \AAA\00007\422	REVISED: 02: 21: 00 08/28/2015	BY: ENALEMO
MTL: -		© □

**BALDOR**

TYPE LC, DV, REV, THERMAL, B PH AMPS THRU HTR HVC, 7 LEAD  
SH 1 of 1