

**BALDOR • RELIANCE**

---

# Customer information packet

## VEJMM3212T

5HP, 3450RPM, 3PH, 60HZ, 182JM, 3622M, ODP, F1

Class - None

Division - Not Applicable

## Specifications

Enclosure	ODP
Frame	182JM
Frame Material	Steel
Frequency	60.00 Hz
Motor Letter Type	Three Phase
Output @ Frequency	5.000 HP @ 60 HZ
Phase	3
Synchronous Speed @ Frequency	3600 RPM @ 60 HZ
Voltage @ Frequency	460.0 V @ 60 HZ 230.0 V @ 60 HZ
XP Class and Group	None
XP Division	Not Applicable
Agency Approvals	CSA CSA EEV UR
Ambient Temperature	40 °C
Auxillary Box	No Auxillary Box
Auxillary Box Lead Termination	None
Base Indicator	No Mounting
Bearing Grease Type	Polyrex EM (-20F +300F)
Blower	None
Current @ Voltage	12.800 A @ 208.0 V 6.000 A @ 460.0 V 12.000 A @ 230.0 V
Design Code	A
Drip Cover	Drip Cover
Duty Rating	CONT
Efficiency @ 100% Load	86.5 %
Electrically Isolated Bearing	Not Electrically Isolated
Feedback Device	NO FEEDBACK
Front Face Code	Standard
Front Shaft Indicator	None

## Part detail

Revision	N
Type	AC
Mech. spec.	36Q302
Base	
Status	PRD/A
Elec. spec.	36WGS040
Layout	36LYQ302
Eff. date	05-01-2024
CD Diagram	CD0005
Poles	02
Leads	9#16
Proprietary	False
Created date	05-28-2015

Heater Indicator	No Heater
High Voltage Full Load Amps	6.0 a
Insulation Class	F
Inverter Code	Inverter Ready
KVA Code	K
Lifting Lugs	Standard Lifting Lugs
Locked Bearing Indicator	Locked Bearing
Motor Lead Exit	Ko Box
Motor Lead Quantity/Wire Size	9 @ 16 AWG
Motor Lead Termination	Flying Leads
Motor Standards	NEMA
Motor Type	3622M
Mounting Arrangement	F1
Number of Poles	2
Overall Length	16.66 IN
Power Factor	91
Product Family	General Purpose
Pulley End Bearing Type	Ball
Pulley Face Code	C-Face
Pulley Shaft Indicator	Tapped & Key
Rodent Screen	Included
RoHS Status	ROHS COMPLIANT
Service Factor	1.15
Shaft Diameter	0.875 IN
Shaft Extension Location	Pulley End
Shaft Ground Indicator	No Shaft Grounding
Shaft Rotation	Reversible
Shaft Slinger Indicator	Shaft Slinger
Speed	3450 rpm
Speed Code	Single Speed
Starting Method	Direct on line
Thermal Device - Bearing	None
Thermal Device - Winding	None
Vibration Sensor Indicator	No Vibration Sensor

Winding Thermal 1	None
Winding Thermal 2	None

**Nameplate**

**NP3553LUA**

<b>CAT.NO.</b>	VEJMM3212T						
<b>SPEC.</b>	36Q302S040G1						
<b>HP</b>	5						
<b>VOLTS</b>	230/460						
<b>AMPS</b>	12/6						
<b>RPM</b>	3450						
<b>FRAME</b>	182JM		<b>HZ</b>	60		<b>PH</b>	3
<b>SF</b>	1.15	<b>CODE</b>	K	<b>DES</b>	A	<b>CLASS</b>	F
<b>NEMA NOM. EFF</b>	86.5	<b>PF</b>	91				
<b>RATING</b>	40C AMB-CONT						
<b>CC</b>	010A	<b>USABLE AT 208V</b>				N/A	
<b>DE</b>	6207	<b>ODE</b>	6205				
<b>ENCL</b>	ODP	<b>SN</b>					
<b>VPWM INVERTER READY</b>							
<b>CT30-60(2:1) VT3-60(20:1)</b>							
<b>USABLE AT</b>	50Hz 5HP 190/380V 14.6/7.3A						SF1.0

**AC Induction Motor Performance Data**

Record # 57977

Typical performance - not guaranteed values

<b>Winding:</b> 36WGS040-R018		<b>Type:</b> 3622M		<b>Enclosure:</b> ODP	
<b>Nameplate Data</b>			<b>460 V, 60 Hz: High Voltage Connection</b>		
<b>Rated Output (HP)</b>	5	<b>Full Load Torque</b>	7.66 LB-FT		
<b>Volts</b>	230/460	<b>Start Configuration</b>	direct on line		
<b>Full Load Amps</b>	12/6	<b>Breakdown Torque</b>	29.99 LB-FT		
<b>R.P.M.</b>	3450	<b>Pull-up Torque</b>	17.89 LB-FT		
<b>Hz</b>	60 Phase	<b>Locked-rotor Torque</b>	22.24 LB-FT		
<b>NEMA Design Code</b>	A	<b>KVA Code</b>	K	<b>Starting Current</b>	49.63 A
<b>Service Factor (S.F.)</b>	1.15	<b>No-load Current</b>	1.99 A		
<b>NEMA Nom. Eff.</b>	86.5	<b>Power Factor</b>	91	<b>Line-line Res. @ 25°C</b>	3.07 Ω
<b>Rating - Duty</b>	40C AMB-CONT		<b>Temp. Rise @ Rated Load</b>	34°C	
<b>S.F. Amps</b>			<b>Temp. Rise @ S.F. Load</b>	42°C	
			<b>Locked-rotor Power Factor</b>	49.2	
			<b>Rotor inertia</b>	0.0988 LB-FT <sup>2</sup>	

**Load Characteristics 460 V, 60 Hz, 5 HP**

<b>% of Rated Load</b>	<b>25</b>	<b>50</b>	<b>75</b>	<b>100</b>	<b>125</b>	<b>150</b>	<b>S.F.</b>
<b>Power Factor</b>	61	79	87	90	92	93	92
<b>Efficiency</b>	81.4	86.5	87.6	86.6	85.3	83.5	85.9
<b>Speed</b>	3566	3535	3503	3465	3423	3379	3445
<b>Line amperes</b>	2.5	3.49	4.68	6.06	7.56	9.15	6.91

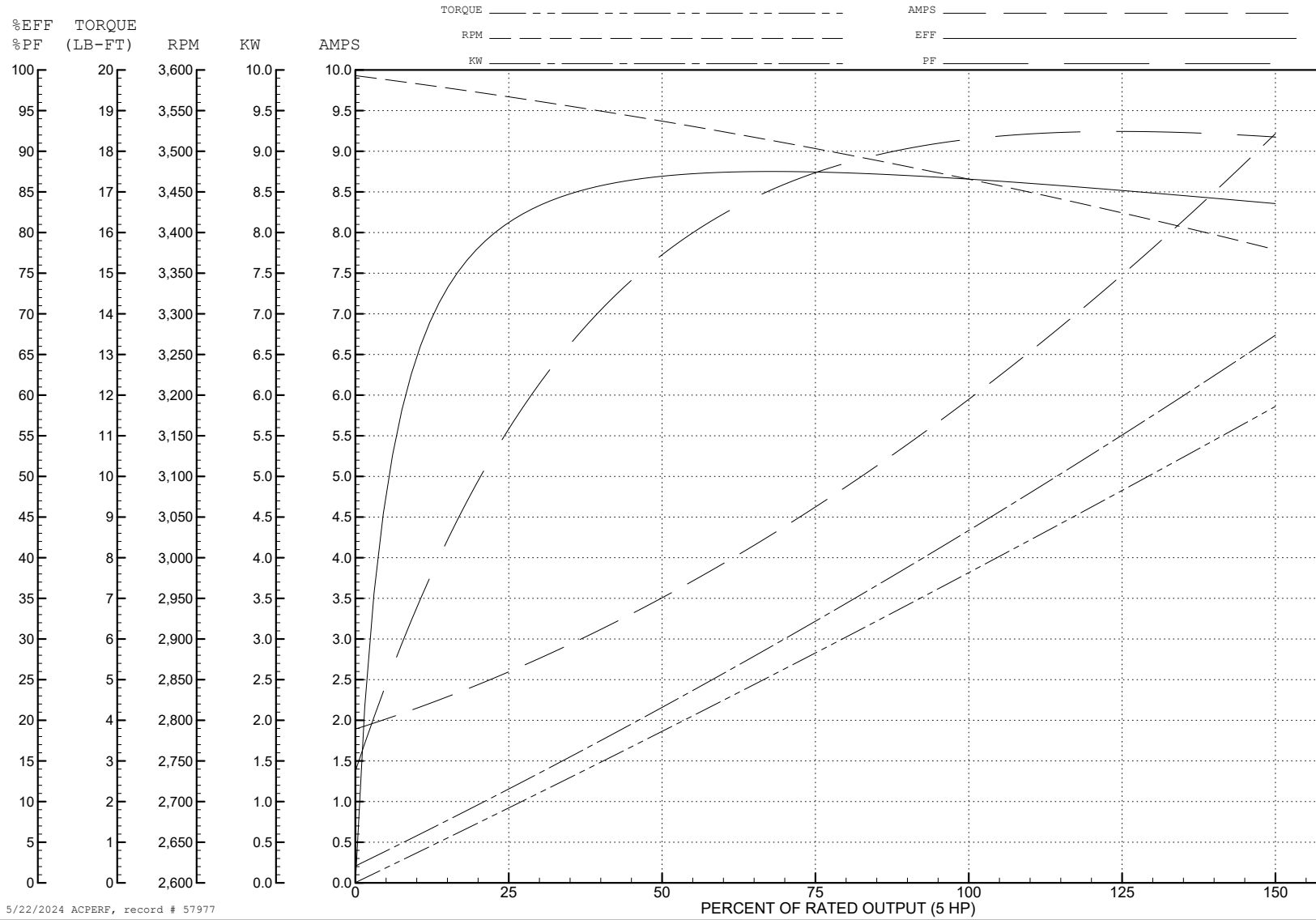
ABB Motors and Mechanical Inc.

WINDING # 36WGS040

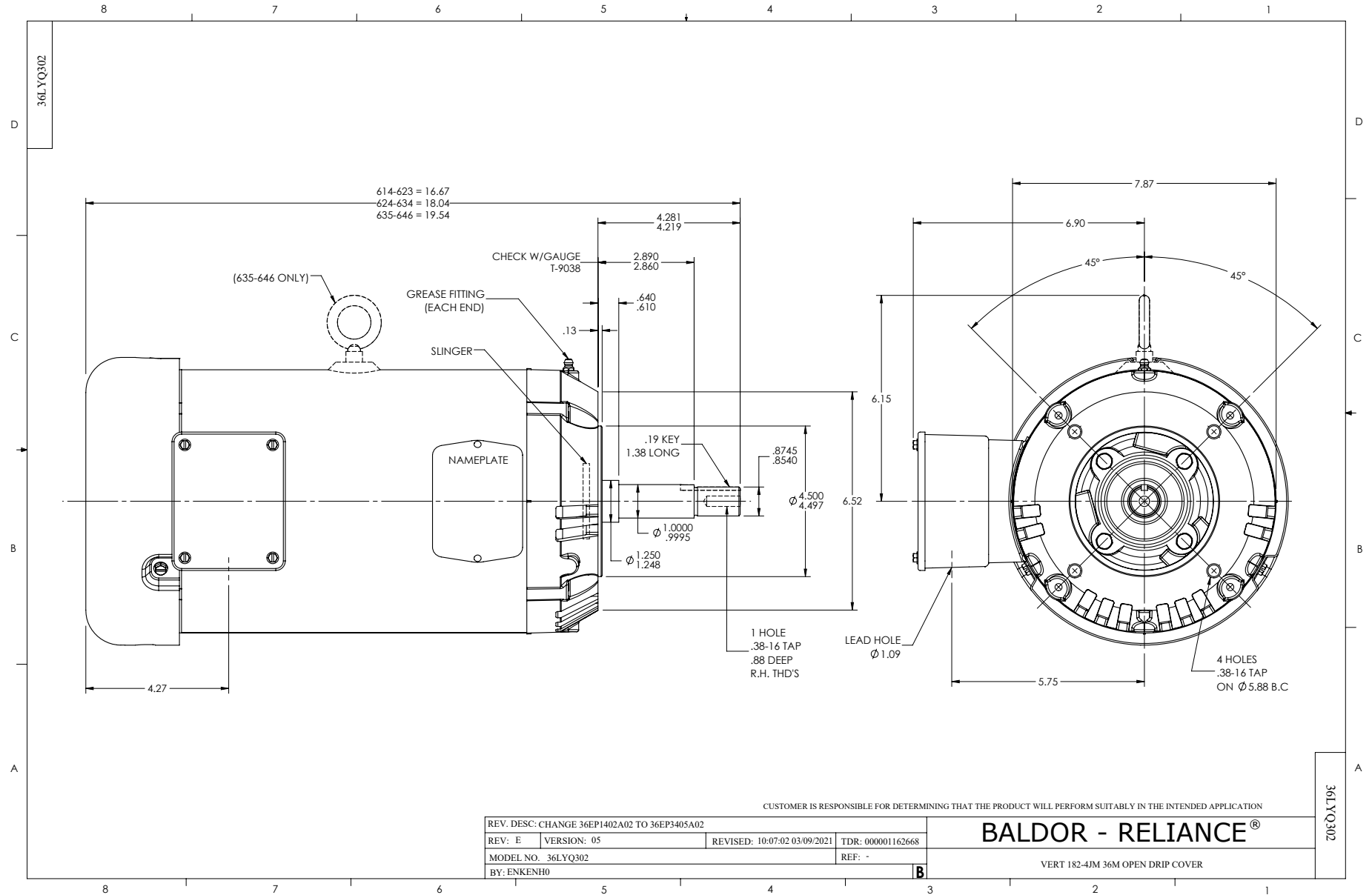
5 HP 3 PH 60 HZ 3450 RPM 460 V 3622M

Typical performance - not guaranteed values.

TORQUES (LB-FT): PO=29.99 PU=17.89 LR=22.24 LRA=49.63

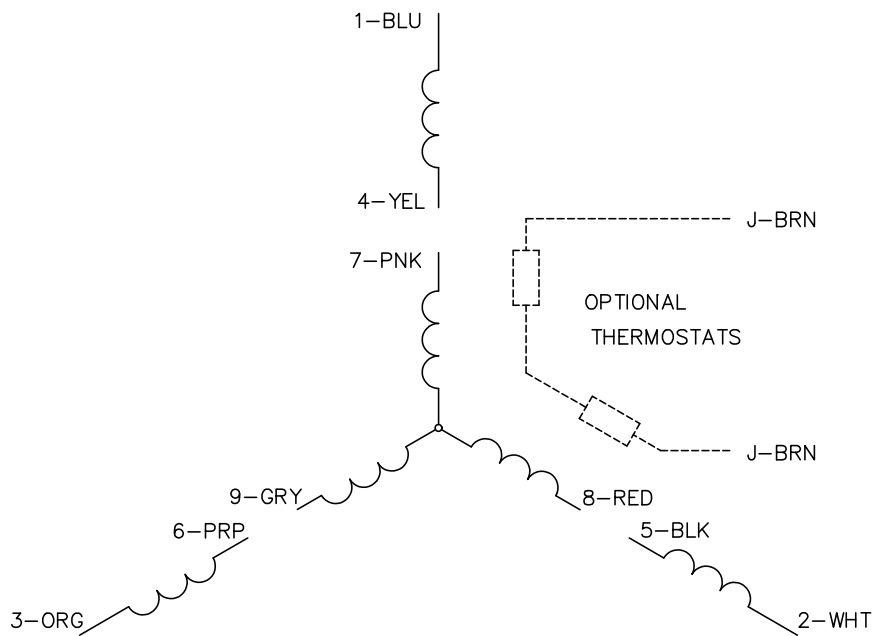


5/22/2024 ACPERF, record # 57977





CD0005

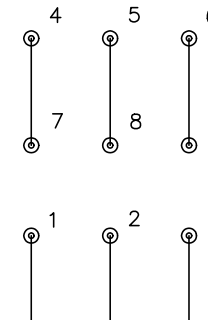


LOW VOLTAGE  
(2Y)



LINE

HIGH VOLTAGE  
(1Y)



LINE

NOTES:

1. INTERCHANGE ANY TWO LINE LEADS TO REVERSE ROTATION.
2. OPTIONAL THERMOSTATS ARE PROVIDED WHEN SPECIFIED.
3. ACTUAL NUMBER OF INTERNAL PARALLEL CIRCUITS MAY BE A MULTIPLE OF THOSE SHOWN ABOVE.
4. LEAD COLORS ARE OPTIONAL. LEADS MUST ALWAYS BE NUMBERED AS SHOWN.

CD0005

REV. DESC: REVISE TO SHOW OPTIONAL COLORS			
REV. LTR: E	BY: JLP	REVISED: 01/19/99 10:15	TDR: 0171435
S00000		FILE: AAA00005140	MDL: -
		MTL: -	

**BALDOR ELECTRIC Co.**

3PH, DV, 9 LEADS