



Customer information packet

VEJMM3157T-5

2HP, 1760RPM, 3PH, 60HZ, 145JM, 3530M, ODTF, F1

Class - None

Division - Not Applicable

Specifications

Enclosure	ODTF
Frame	145JM
Frame Material	Steel
Frequency	60.00 Hz
Haz Area Class and Group	None
Haz Area Division	Not Applicable
Motor Letter Type	Three Phase
Output @ Frequency	2.000 HP @ 60 HZ
Phase	3
Synchronous Speed @ Frequency	1800 RPM @ 60 HZ
Voltage @ Frequency	575.0 V @ 60 HZ
Agency Approvals	CURUSEEV NEMA PREMIUM
Ambient Temperature	40 °C
Auxiliary Box	NO AUXILLARY BOX
Auxiliary Box Lead Termination	None
Base Indicator	No Mounting
Bearing Grease Type	Polyrex EM (-20F +300F)
Blower	None
Current @ Voltage	2.300 A @ 575.0 V
Design Code	B
Drip Cover	Drip Cover
Duty Rating	CONT
Efficiency @ 100% Load	86.5 %
Electrically Isolated Bearing	Not Electrically Isolated
Feedback Device	NO FEEDBACK
Front Shaft Indicator	None
Heater Indicator	No Heater
High Voltage Full Load Amps	2.3 a
Insulation Class	F
Inverter Code	Inverter Ready
KVA Code	L

Part detail

Revision	B
Type	AC
Mech. spec.	35E422
Base	
Status	PRD/A
Elec. spec.	35WGG866
Layout	35LYE422
Eff. date	02-25-2025
CD Diagram	CD0006
Poles	04
Leads	3#18
Proprietary	False
Created date	12-20-2023

Lifting Lugs	No Lifting Lugs
Locked Bearing Indicator	Locked Bearing
Motor Lead Quantity/Wire Size	3 @ 18 AWG
Motor Lead Termination	Flying Leads
Motor Standards	NEMA
Motor Type	3530M
Mounting Arrangement	F1
Number of Poles	4
Overall Length	16.29 IN
Power Factor	74
Product Family	General Purpose
Pulley End Bearing Type	Ball
Pulley Face Code	C-Face
Pulley Shaft Indicator	Tapped & Key
Rodent Screen	Included
Service Factor	1.15
Shaft Diameter	0.875 IN
Shaft Ground Indicator	No Shaft Grounding
Shaft Rotation	Reversible
Shaft Slinger Indicator	Shaft Slinger
Speed	1760 rpm
Speed Code	Single Speed
Starting Method	Direct on line
Thermal Device - Bearing	None
Thermal Device - Winding	None
Vibration Sensor Indicator	No Vibration Sensor
Winding Thermal 1	None
Winding Thermal 2	None

Nameplate

NP1259L									
CAT.NO.	VEJMM3157T-5								
SPEC.	35E422G866								
HP	2								
VOLTS	575								
AMP	2.3								
RPM	1760								
FRAME	145JM	HZ	60	PH	3				
SER.F.	1.15	CODE	L	DES	B	CL	F		
NEMA-NOM-EFF	86.5	PF	74						
RATING	40C AMB-CONT								
CC	010A								
DE	6206	ODE	6203						
ENCL	ODTF	SN							
INVERTER DUTY 20:1 VT									

AC Induction Motor Performance Data

Record # 101388

Typical performance - not guaranteed values

Winding: 35WGG866-R001		Type: 3530M		Enclosure: OPSB	
Nameplate Data			575 V, 60 Hz: Single Voltage Motor		
Rated Output (HP)	2	Full Load Torque	5.98 LB-FT		
Volts	575	Start Configuration	direct on line		
Full Load Amps	2.3	Breakdown Torque	23 LB-FT		
R.P.M.	1760	Pull-up Torque	15.5 LB-FT		
Hz	60	Locked-rotor Torque	16.9 LB-FT		
NEMA Design Code	B	Starting Current	20 A		
Service Factor (S.F.)	1.15	No-load Current	1.42 A		
NEMA Nom. Eff.	86.5	Line-line Res. @ 25°C	12.8 Ω		
Rating - Duty	40C	Temp. Rise @ Rated Load	61°C		
S.F. Amps	AMB-CONT	Temp. Rise @ S.F. Load	73°C		
		Locked-rotor Power Factor	56.5		
		Rotor inertia	0.217 lb-ft ²		

Load Characteristics 575 V, 60 Hz, 2 HP

% of Rated Load	25	50	75	100	125	150	S.F.
Power Factor	33	52	66	74	80	83	78
Efficiency	77.8	85	87	87	86.1	84.6	86.5
Speed	1792	1783	1773	1763	1753	1739	1757
Line amperes	1.48	1.68	1.95	2.32	2.73	3.19	2.57

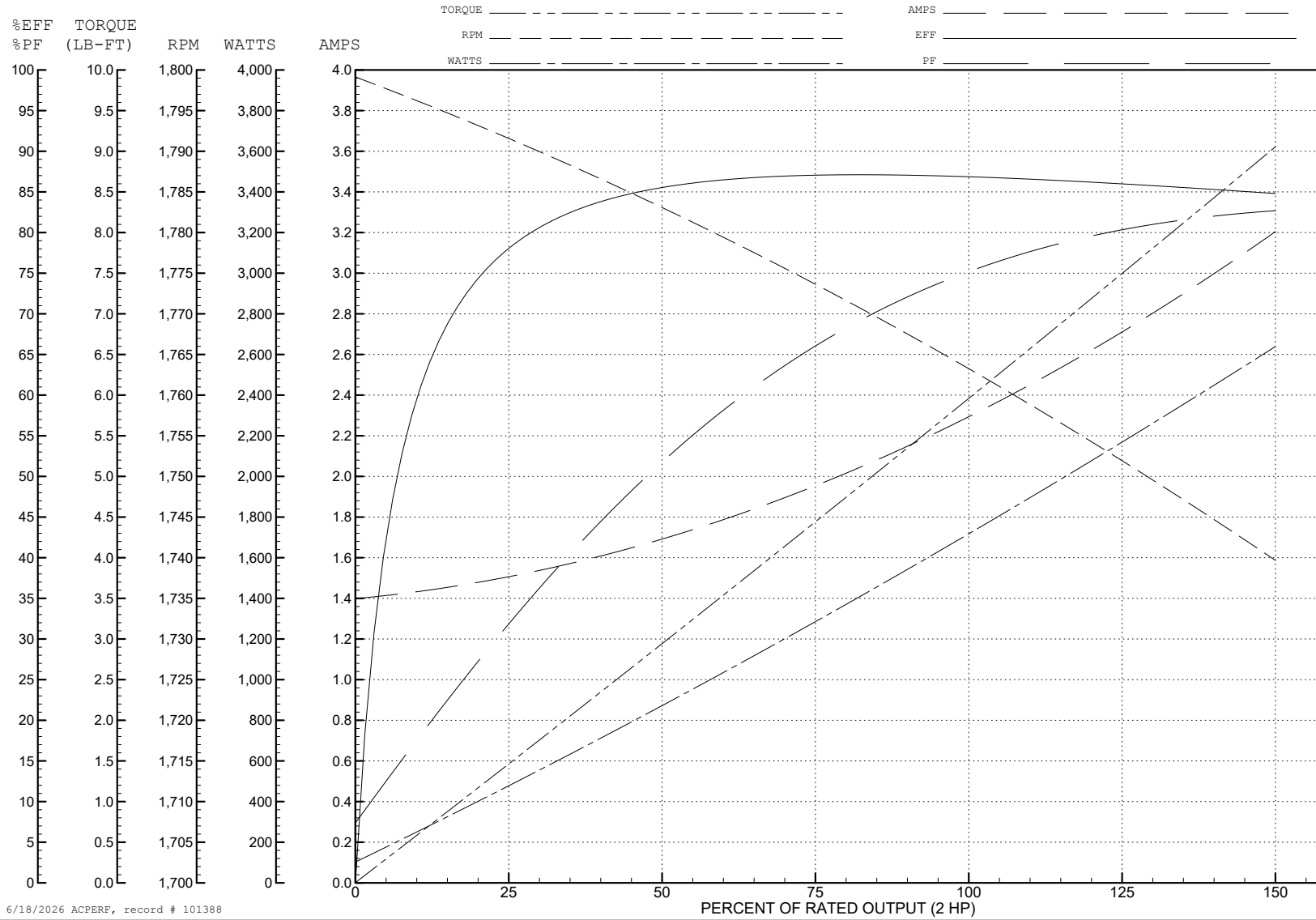
ABB Motors and Mechanical Inc.

WINDING # 35WGG866

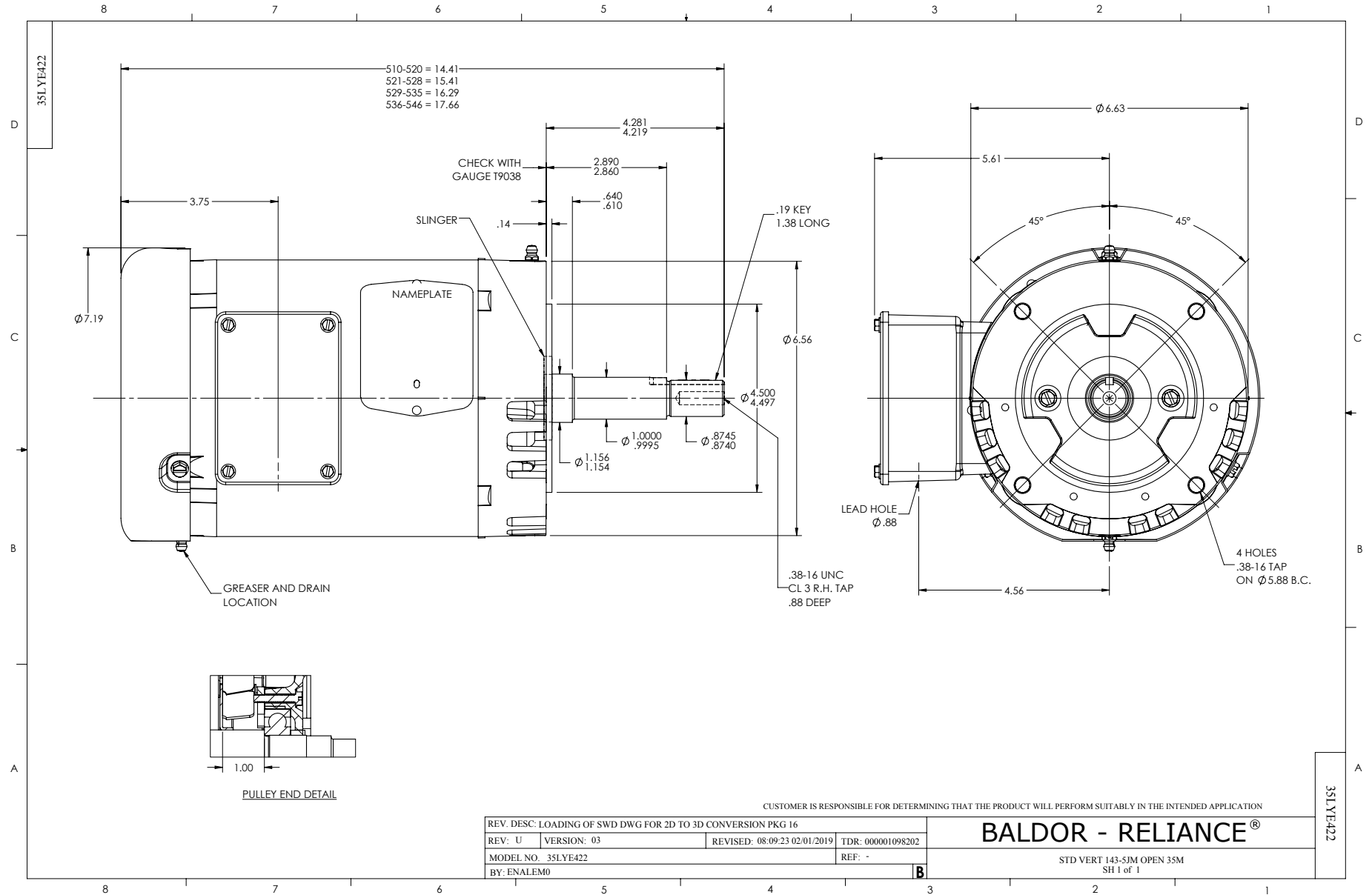
Typical performance - not guaranteed values.

2 HP 3 PH 60 HZ 1760 RPM 575 V 3530M

TORQUES (LB-FT): PO=23 PU=15.5 LR=16.9 LRA=20



6/18/2026 ACPERF, record # 101388



CD0006



NOTES:

1. THREE LEAD MOTOR MAY BE EITHER WYE CONNECTED OR DELTA CONNECTED.
2. INTERCHANGE ANY TWO LINE LEADS TO REVERSE ROTATION.
3. OPTIONAL THERMOSTATS ARE PROVIDED WHEN SPECIFIED.
4. ACTUAL NUMBER OF INTERNAL PARALLEL CIRCUITS MAY VARY.
5. LEAD COLORS ARE OPTIONAL. LEADS MUST BE NUMBERED AS SHOWN.

CD0006

REV. DESC: ADD CLASS CONN00000007		
REV. LTR: E	VERSION: 01	TDR: 000001099922
FILE: \AAA\00005\141	REVISED: 10:24:49 02/19/2019	BY: ENBRIRO
MTL: -	© □	

BALDOR - RELIANCE®

3PH, SV, 3 LEADS, WYE OR DELTA CONNECTED

SH 1 of 1