

**BALDOR • RELIANCE**

---

# Customer information packet

## VEJMM3154T

1.5HP, 1755RPM, 3PH, 60HZ, 145JM, 3522M, ODP, F

Class - None

Division - Not Applicable

## Specifications

Enclosure	ODP
Frame	145JM
Frame Material	Steel
Frequency	60.00 Hz
Motor Letter Type	Three Phase
Output @ Frequency	1.500 HP @ 60 HZ
Phase	3
Synchronous Speed @ Frequency	1800 RPM @ 60 HZ
Voltage @ Frequency	460.0 V @ 60 HZ 230.0 V @ 60 HZ
XP Class and Group	None
XP Division	Not Applicable
Agency Approvals	CSA CSA EEV UR
Ambient Temperature	40 °C
Auxillary Box	No Auxillary Box
Auxillary Box Lead Termination	None
Base Indicator	No Mounting
Bearing Grease Type	Polyrex EM (-20F +300F)
Blower	None
Current @ Voltage	4.400 A @ 230.0 V 4.500 A @ 208.0 V 2.200 A @ 460.0 V
Design Code	B
Drip Cover	Drip Cover
Duty Rating	CONT
Efficiency @ 100% Load	86.5 %
Electrically Isolated Bearing	Not Electrically Isolated
Feedback Device	NO FEEDBACK
Front Face Code	Standard
Front Shaft Indicator	None

## Part detail

Revision	Q
Type	AC
Mech. spec.	35E4124
Base	
Status	PRD/A
Elec. spec.	35WGM495
Layout	35LYE4124
Eff. date	02-21-2023
CD Diagram	CD0005
Poles	04
Leads	9#18
Proprietary	False
Created date	07-18-2016

Heater Indicator	No Heater
High Voltage Full Load Amps	2.2 a
Insulation Class	F
Inverter Code	Inverter Ready
KVA Code	L
Lifting Lugs	No Lifting Lugs
Locked Bearing Indicator	Locked Bearing
Motor Lead Exit	Ko Box
Motor Lead Quantity/Wire Size	9 @ 18 AWG
Motor Lead Termination	Flying Leads
Motor Standards	NEMA
Motor Type	3522M
Mounting Arrangement	F1
Number of Poles	4
Overall Length	15.43 IN
Power Factor	72
Product Family	General Purpose
Pulley End Bearing Type	Ball
Pulley Face Code	C-Face
Pulley Shaft Indicator	Tapped & Key
Rodent Screen	Included
RoHS Status	ROHS COMPLIANT
Service Factor	1.15
Shaft Diameter	0.875 IN
Shaft Extension Location	Pulley End
Shaft Ground Indicator	No Shaft Grounding
Shaft Rotation	Reversible
Shaft Slinger Indicator	Shaft Slinger
Speed	1755 rpm
Speed Code	Single Speed
Starting Method	Direct on line
Thermal Device - Bearing	None
Thermal Device - Winding	None
Vibration Sensor Indicator	No Vibration Sensor

Winding Thermal 1	None
Winding Thermal 2	None

---

**Nameplate**

<b>NP3553LUA</b>										
<b>CAT.NO.</b>	VEJMM3154T									
<b>SPEC.</b>	35E4124M495G1									
<b>HP</b>	1.5									
<b>VOLTS</b>	230/460									
<b>AMPS</b>	4.4/2.2									
<b>RPM</b>	1755									
<b>FRAME</b>	145JM		<b>HZ</b>	60		<b>PH</b>	3			
<b>SF</b>	1.15	<b>CODE</b>	L	<b>DES</b>	B	<b>CLASS</b>	F			
<b>NEMA NOM. EFF</b>	86.5	<b>PF</b>	72							
<b>RATING</b>	40C AMB-CONT									
<b>CC</b>	010A		<b>USABLE AT 208V</b>	4.5						
<b>DE</b>	6206		<b>ODE</b>	6203						
<b>ENCL</b>	ODP	<b>SN</b>								
<b>VPWM INVERTER READY</b>										
<b>CT30-60(2:1) VT3-60(20:1)</b>										
<b>USABLE AT</b>	50HZ 1.5HP 190/380V 5.2/2.6A							SF1.0		

**AC Induction Motor Performance Data**

Record # 58172

Typical performance - not guaranteed values

Winding: 35WGM495-R013		Type: 3522M		Enclosure: ODP	
<b>Nameplate Data</b>			<b>460 V, 60 Hz: High Voltage Connection</b>		
Rated Output (HP)	1.5		Full Load Torque	4.46 LB-FT	
Volts	230/460		Start Configuration	direct on line	
Full Load Amps	4.4/2.2		Breakdown Torque	17.7 LB-FT	
R.P.M.	1755		Pull-up Torque	10.8 LB-FT	
Hz	60 Phase	3	Locked-rotor Torque	12.6 LB-FT	
NEMA Design Code	B	KVA Code	L	Starting Current	17.5 A
Service Factor (S.F.)	1.15		No-load Current	1.43 A	
NEMA Nom. Eff.	86.5	Power Factor	72	Line-line Res. @ 25°C	10.73 Ω
Rating - Duty	40C AMB-CONT		Temp. Rise @ Rated Load	34°C	
S.F. Amps			Temp. Rise @ S.F. Load	40°C	
			Locked-rotor Power Factor	52.5	

**Load Characteristics 460 V, 60 Hz, 1.5 HP**

% of Rated Load	25	50	75	100	125	150	S.F.
Power Factor	32	50	63	72	78	81	76
Efficiency	74.7	83.5	86	86.6	86.3	85.3	86.4
Speed	1789.9	1780.2	1769.2	1758.4	1746.3	1732.6	1751
Line amperes	1.5	1.67	1.93	2.24	2.61	3.05	2.46

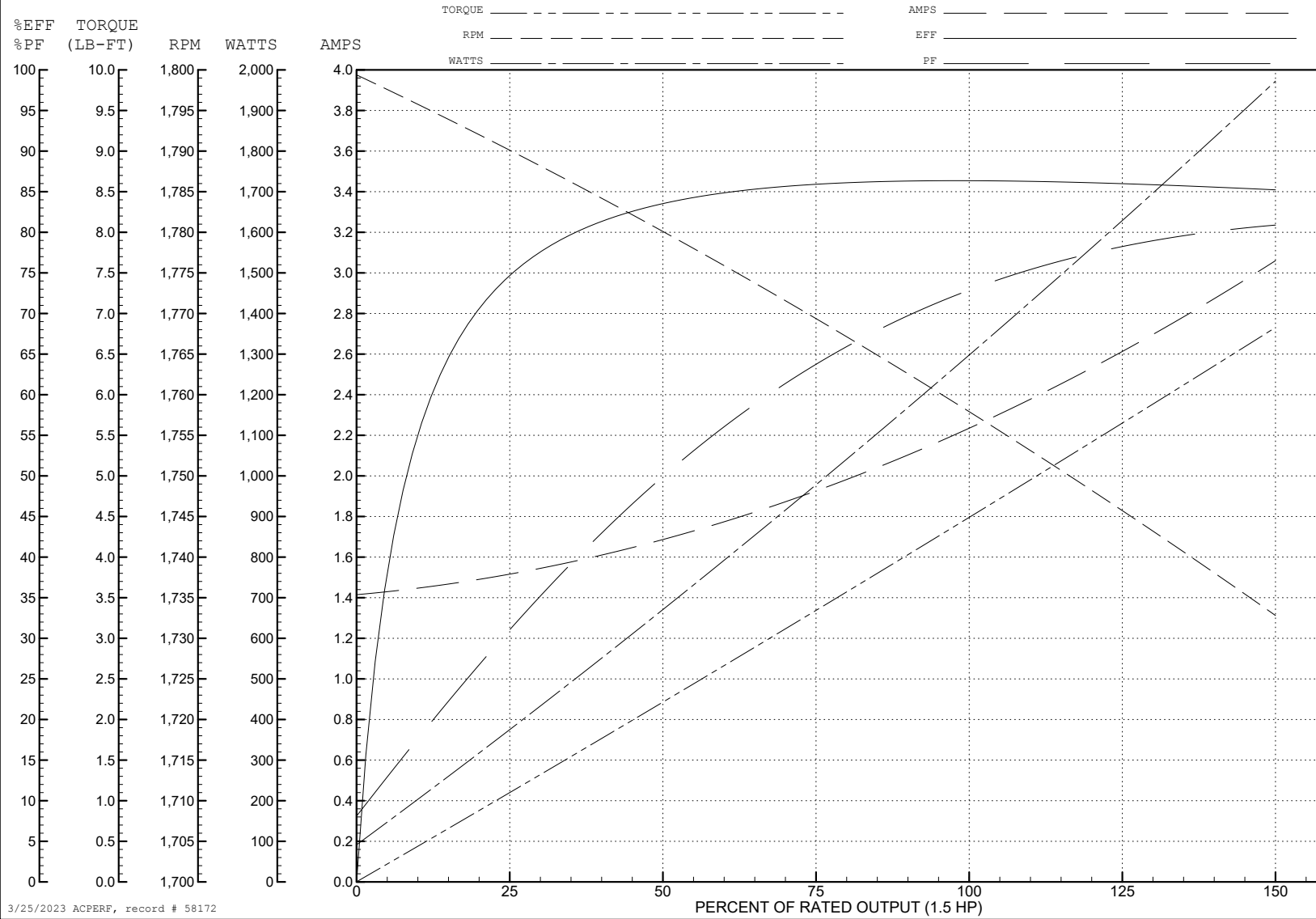
ABB Motors and Mechanical Inc.

WINDING # 35WGM495

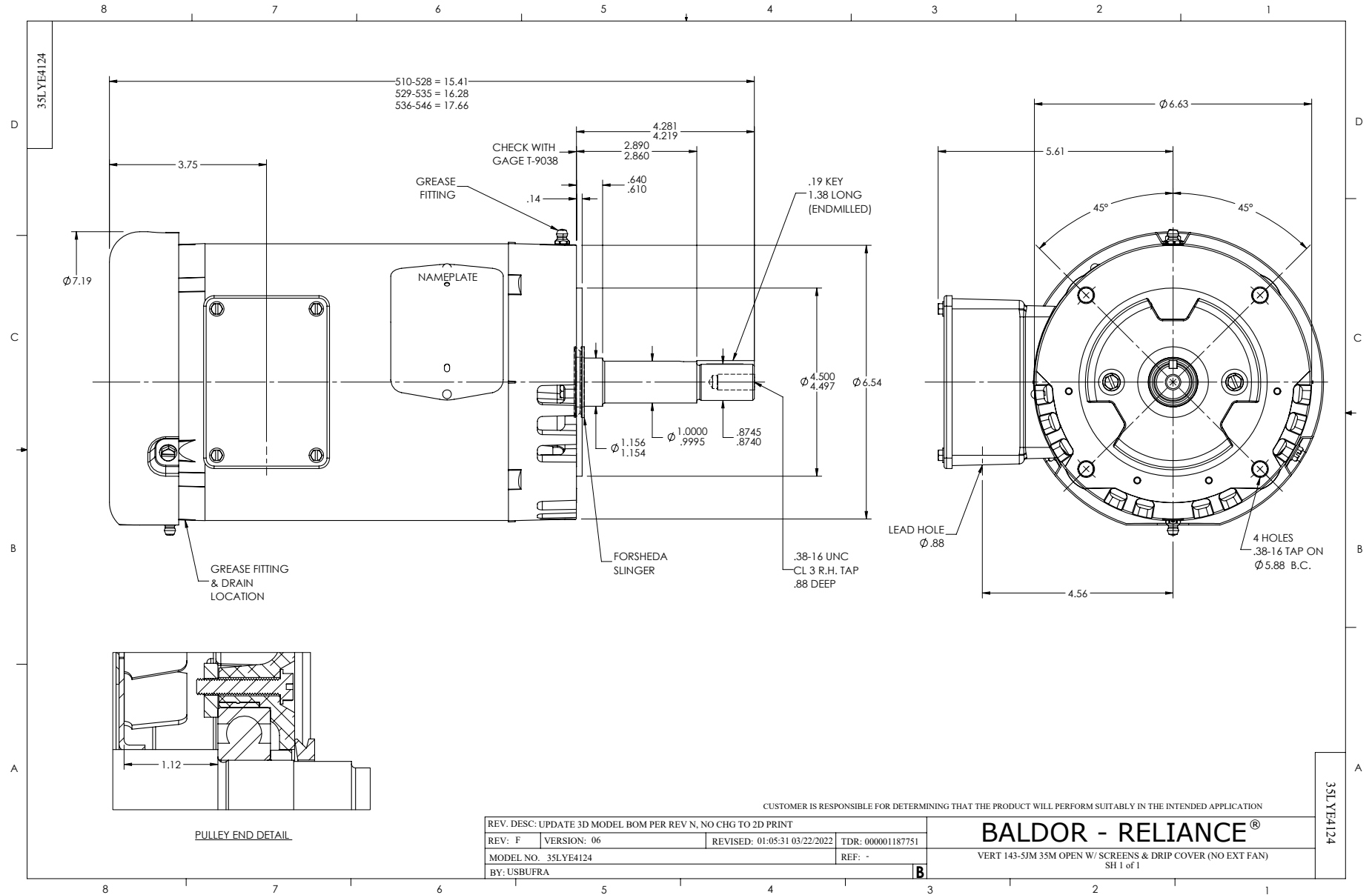
Typical performance - not guaranteed values.

1.5 HP 3 PH 60 HZ 1755 RPM 460 V 3522M

TORQUES (LB-FT): PO=17.7 PU=10.8 LR=12.6 LRA=17.5

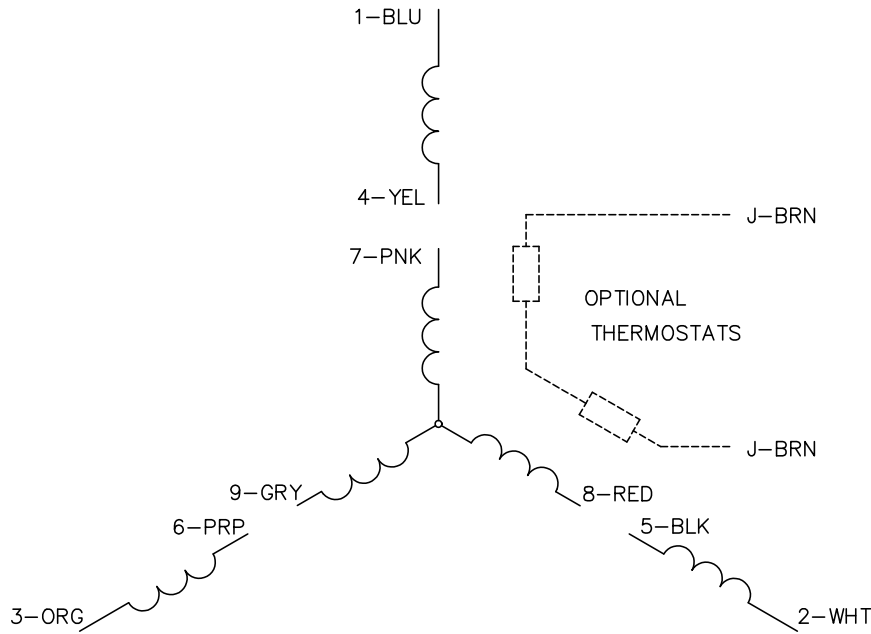


3/25/2023 ACPERF, record # 58172

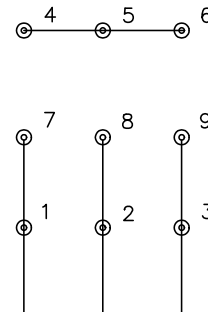




CD0005

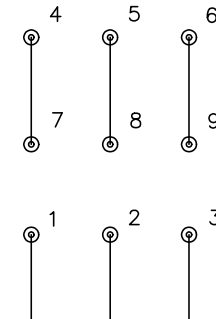


LOW VOLTAGE  
(2Y)



LINE

HIGH VOLTAGE  
(1Y)



LINE

**NOTES:**

1. INTERCHANGE ANY TWO LINE LEADS TO REVERSE ROTATION.
2. OPTIONAL THERMOSTATS ARE PROVIDED WHEN SPECIFIED.
3. ACTUAL NUMBER OF INTERNAL PARALLEL CIRCUITS MAY BE A MULTIPLE OF THOSE SHOWN ABOVE.
4. LEAD COLORS ARE OPTIONAL. LEADS MUST ALWAYS BE NUMBERED AS SHOWN.

CD0005

REV. DESC: REVISE TO SHOW OPTIONAL COLORS			
REV. LTR: E	BY: JLP	REVISED: 01/19/99 10:15	TDR: 0171435
S00000		FILE: AAA00005140	MDL: -
		MTL: -	

**BALDOR ELECTRIC Co.**

3PH, DV, 9 LEADS