

# **ABB BALDOR RELIANCE III**

---

## **Customer information packet**

### VEDM3611T

3HP, 1764RPM, 3PH, 60HZ, 182TC, 3630M, TEFC, F1

Class - None

Division - Not Applicable

**Specifications**

<b>Enclosure</b>	TEFC
<b>Frame</b>	182TC
<b>Frame Material</b>	Steel
<b>Frequency</b>	60.00 Hz
<b>Haz Area Class and Group</b>	None
<b>Haz Area Division</b>	Not Applicable
<b>Motor Letter Type</b>	Three Phase
<b>Output @ Frequency</b>	3.000 HP @ 60 HZ
<b>Phase</b>	3
<b>Synchronous Speed @ Frequency</b>	1800 RPM @ 60 HZ
<b>Voltage @ Frequency</b>	230.0 V @ 60 HZ 460.0 V @ 60 HZ
<b>Agency Approvals</b>	NEMA PREMIUM CURUSEEV
<b>Ambient Temperature</b>	40 °C
<b>Auxiliary Box</b>	NO AUXILLARY BOX
<b>Auxiliary Box Lead Termination</b>	None
<b>Base Indicator</b>	No Mounting
<b>Bearing Grease Type</b>	Polyrex EM (-20F +300F)
<b>Blower</b>	None
<b>Constant Torque Speed Range</b>	6
<b>Current @ Voltage</b>	4.160 A @ 460.0 V 8.320 A @ 230.0 V 8.800 A @ 208.0 V
<b>Design Code</b>	B
<b>Drip Cover</b>	No Drip Cover
<b>Duty Rating</b>	CONT
<b>Efficiency @ 100% Load</b>	89.5 %
<b>Electrically Isolated Bearing</b>	Not Electrically Isolated
<b>Feedback Device</b>	NO FEEDBACK
<b>Front Shaft Indicator</b>	None
<b>Heater Indicator</b>	No Heater

**Part Detail**

<b>Revision</b>	A
<b>Type</b>	AC
<b>Mech. spec.</b>	36Q733
<b>Base</b>	
<b>Status</b>	PRD/A
<b>Elec. spec.</b>	36WGZ650
<b>Layout</b>	36LYQ733
<b>Eff. date</b>	04-16-2026
<b>CD Diagram</b>	CD0005
<b>Poles</b>	04
<b>Leads</b>	9#16
<b>Proprietary</b>	False
<b>Created date</b>	11-05-2025

<b>High Voltage Full Load Amps</b>	4.2 a
<b>Insulation Class</b>	F
<b>Inverter Code</b>	Inverter Ready
<b>KVA Code</b>	K
<b>Lifting Lugs</b>	No Lifting Lugs
<b>Locked Bearing Indicator</b>	Locked Bearing
<b>Motor Lead Quantity/Wire Size</b>	9 @ 16 AWG
<b>Motor Lead Termination</b>	Flying Leads
<b>Motor Standards</b>	NEMA
<b>Motor Type</b>	3630M
<b>Mounting Arrangement</b>	F1
<b>Number of Poles</b>	4
<b>Overall Length</b>	16.60 IN
<b>Power Factor</b>	74
<b>Product Family</b>	Dirty Duty Plus
<b>Pulley End Bearing Type</b>	Ball
<b>Pulley Face Code</b>	C-Face
<b>Pulley Shaft Indicator</b>	Standard
<b>Rodent Screen</b>	None
<b>Service Factor</b>	1.15
<b>Shaft Diameter</b>	1.125 IN
<b>Shaft Ground Indicator</b>	No Shaft Grounding
<b>Shaft Rotation</b>	Reversible
<b>Shaft Slinger Indicator</b>	No Slinger
<b>Speed</b>	1764 rpm
<b>Speed Code</b>	Single Speed
<b>Starting Method</b>	Direct on line
<b>Thermal Device - Bearing</b>	None
<b>Thermal Device - Winding</b>	None
<b>Vibration Sensor Indicator</b>	No Vibration Sensor
<b>Winding Thermal 1</b>	None
<b>Winding Thermal 2</b>	None

**Nameplate**

**NP3504**

<b>CAT NO</b>	VEDM3611T					
<b>SPEC.</b>	36Q733Z650	<b>ENCL</b>	TEFC			
<b>FRAME</b>	182TC	<b>HP</b>	3			
<b>VOLTS</b>	230/460					
<b>FLA</b>	8.4/4.2	<b>I.P.</b>	56			
<b>RPM</b>	1765	<b>RPM MAX</b>				
<b>HZ</b>	60	<b>PH</b>	3	<b>CLASS</b>	F	
<b>SER.F.</b>	1.15	<b>DES</b>	B	<b>CC</b>	010A	
<b>NEMA-NOM-EFF</b>	89.5					
<b>RATING</b>	40C AMB-CONT					
<b>DE BRG</b>	6206	<b>ODE BRG</b>	6205			
<b>GREASE</b>	POLYREX EM					
<b>INV. TYPE</b>		<b>C HP FR</b>	60	<b>C HP TO</b>	90	
<b>CT HZ FROM</b>	6	<b>CT HZ TO</b>	60	<b>VT HZ FROM</b>	6	<b>VT HZ TO</b> 60
<b>SER.NO</b>	50C AT 1.0SF					

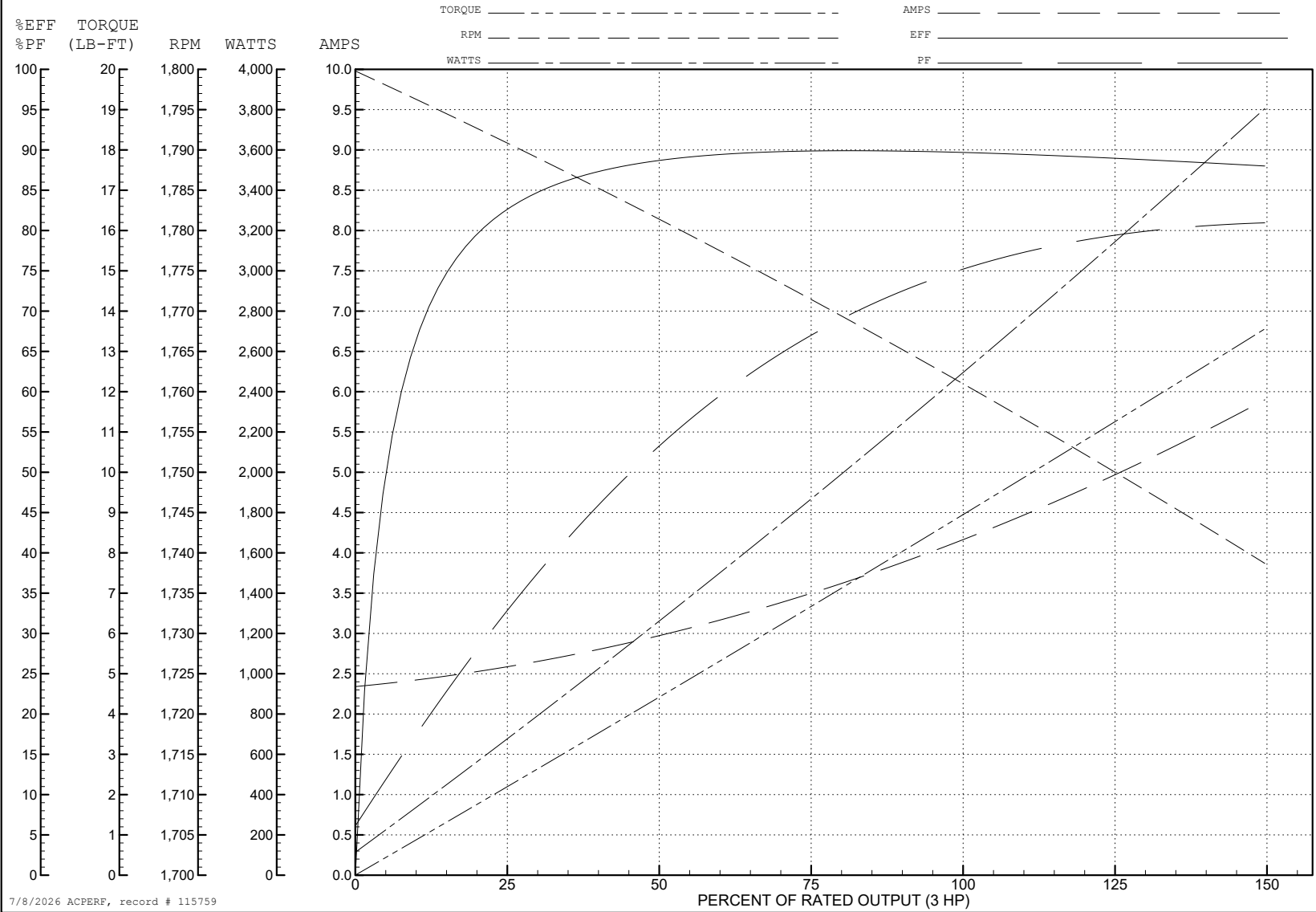
ABB Motors and Mechanical Inc.

WINDING # 36WGZ650

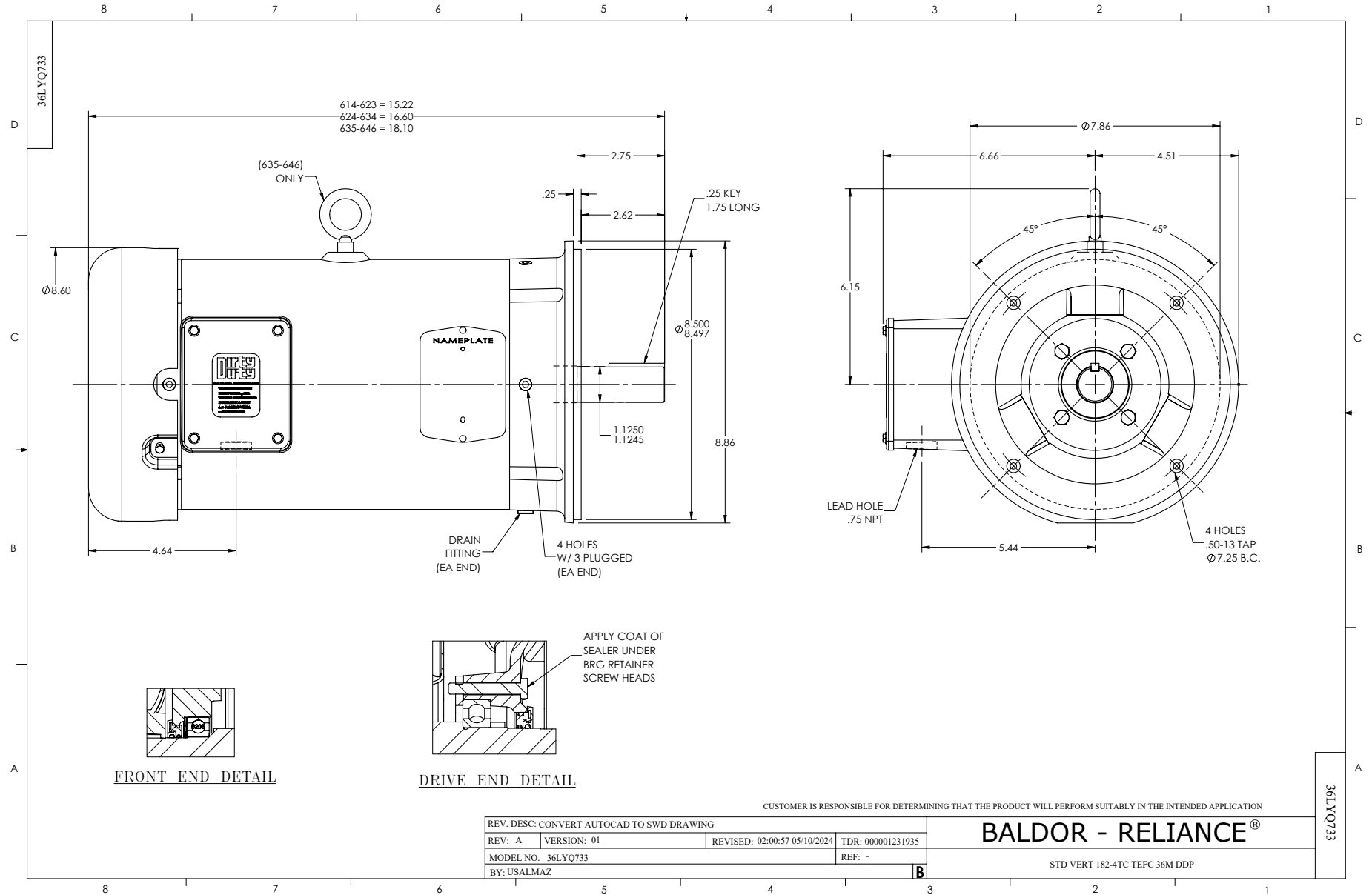
3 HP 3 PH 60 HZ 1765 RPM 460 V 3630M

Typical performance - not guaranteed values.

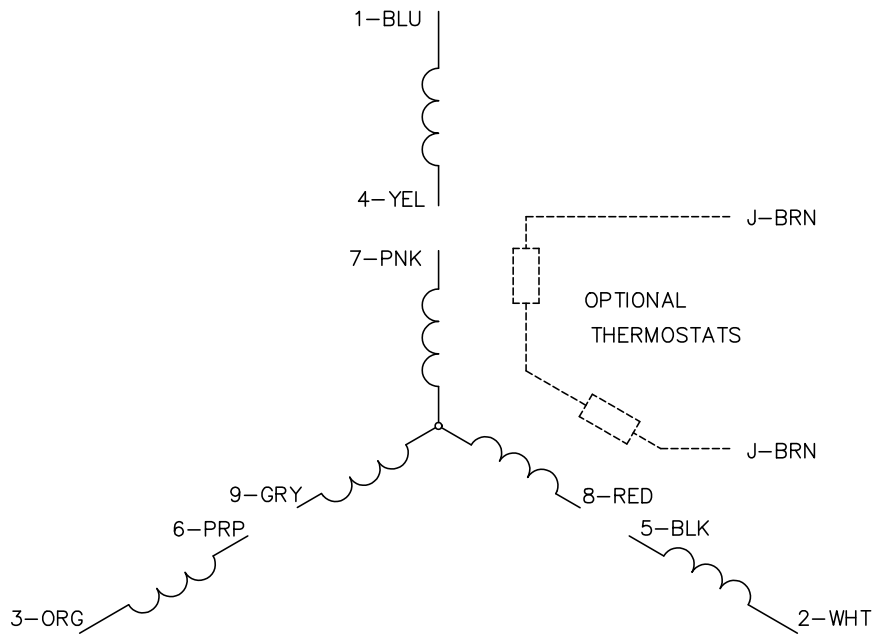
TORQUES (LB-FT): PO=38.2 PU=19.1 LR=22.4 LRA=32.2



7/8/2026 ACPERF, record # 115759



CD0005

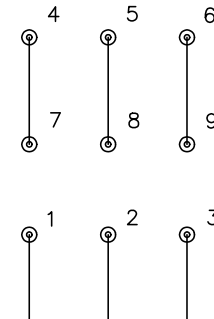


LOW VOLTAGE  
(2Y)



LINE

HIGH VOLTAGE  
(1Y)



LINE

NOTES:

1. INTERCHANGE ANY TWO LINE LEADS TO REVERSE ROTATION.
2. OPTIONAL THERMOSTATS ARE PROVIDED WHEN SPECIFIED.
3. ACTUAL NUMBER OF INTERNAL PARALLEL CIRCUITS MAY BE A MULTIPLE OF THOSE SHOWN ABOVE.
4. LEAD COLORS ARE OPTIONAL. LEADS MUST ALWAYS BE NUMBERED AS SHOWN.

CD0005

REV. DESC: REVISE TO SHOW OPTIONAL COLORS			
REV. LTR: E	BY: JLP	REVISED: 01/19/99 10:15	TDR: 0171435
S00000		FILE: AAA00005140	MDL: -
		MTL: -	

**BALDOR ELECTRIC Co.**

3PH, DV, 9 LEADS