



Customer information packet

VECP3764T

3HP, 1165RPM, 3PH, 60HZ, 213TC, 0738M, TEFC, F1

Class - CLI GP A,B,C,D

Division - Division II

Specifications

| | |
|--------------------------------|----------------------------------------------------------|
| Enclosure | TEFC |
| Frame | 213TC |
| Frame Material | Iron |
| Frequency | 60.00 Hz |
| Haz Area Class and Group | CLI GP A,B,C,D |
| Haz Area Division | Division II |
| Motor Letter Type | Three Phase |
| Output @ Frequency | 3.000 HP @ 60 HZ |
| Phase | 3 |
| Synchronous Speed @ Frequency | 1200 RPM @ 60 HZ |
| Voltage @ Frequency | 230.0 V @ 60 HZ 460.0 V @ 60 HZ |
| Agency Approvals | CSA EEV NEMA PREMIUM NEMA_PREMIUM UR CCSA US |
| Ambient Temperature | 40 °C |
| Auxillary Box | No Auxillary Box |
| Auxillary Box Lead Termination | None |
| Base Indicator | No Mounting |
| Bearing Grease Type | Polyrex EM (-20F +300F) |
| Blower | None |
| Constant Torque Speed Range | 1.8 |
| Current @ Voltage | 9.000 A @ 230.0 V 4.500 A @ 460.0 V |
| Design Code | B |
| Drip Cover | Drip Cover |
| Duty Rating | CONT |
| Efficiency @ 100% Load | 90.2 % |
| Electrically Isolated Bearing | Not Electrically Isolated |
| Feedback Device | NO FEEDBACK |

Part detail

| | |
|--------------|------------|
| Revision | AA |
| Type | AC |
| Mech. spec. | 07K370 |
| Base | |
| Status | PRD/A |
| Elec. spec. | 07WGX822 |
| Layout | 07LYK370 |
| Eff. date | 09-09-2022 |
| CD Diagram | CD0005 |
| Poles | 06 |
| Leads | 9#14 |
| Proprietary | False |
| Created date | 08-02-2006 |

| | |
|-------------------------------|------------------------------|
| Front Face Code | Standard |
| Front Shaft Indicator | None |
| Haz Area Temp Code | T3C |
| Heater Indicator | No Heater |
| High Voltage Full Load Amps | 4.5 a |
| Insulation Class | F |
| Inverter Code | Inverter Duty |
| KVA Code | K |
| Lifting Lugs | Standard Lifting Lugs |
| Locked Bearing Indicator | Locked Bearing |
| Max Speed | 1800 rpm |
| Motor Lead Exit | Ko Box |
| Motor Lead Quantity/Wire Size | 9 @ 14 AWG |
| Motor Lead Termination | Flying Leads |
| Motor Standards | NEMA |
| Motor Type | 0738M |
| Mounting Arrangement | F1 |
| Number of Poles | 6 |
| Overall Length | 21.36 IN |
| Power Factor | 70 |
| Product Family | Chemical Processing (Not DC) |
| Pulley End Bearing Type | Ball |
| Pulley Face Code | C-Face |
| Pulley Shaft Indicator | Standard |
| Rodent Screen | None |
| RoHS Status | ROHS COMPLIANT |
| Service Factor | 1.15 |
| Shaft Diameter | 1.375 IN |
| Shaft Extension Location | Pulley End |
| Shaft Ground Indicator | No Shaft Grounding |
| Shaft Rotation | Reversible |
| Shaft Slinger Indicator | Shaft Slinger |
| Speed | 1165 rpm |
| Speed Code | Single Speed |

| | |
|-----------------------------------|---------------------|
| Starting Method | Direct on line |
| Thermal Device - Bearing | None |
| Thermal Device - Winding | None |
| Vibration Sensor Indicator | No Vibration Sensor |
| Winding Thermal 1 | None |
| Winding Thermal 2 | None |

Nameplate

| NP3257 | | | | | | | | | |
|---------------------|--------------|-------------|------|------------|---|-----------|---|--|--|
| CAT.NO. | VECP3764T | | | | | | | | |
| SPEC. | 07K370X822G1 | | | | | | | | |
| HP | 3 TE | | | | | | | | |
| VOLTS | 230/460 | | | | | | | | |
| AMP | 9/4.5 | | | | | | | | |
| RPM | 1165 | | | | | | | | |
| FRAME | 213TC | HZ | 60 | PH | 3 | | | | |
| SER.F. | 1.15 | CODE | K | DES | B | CL | F | | |
| RATING | 40C AMB-CONT | | | | | | | | |
| SN | | | | | | | | | |
| DE | 6307 | ODE | 6307 | | | | | | |
| NEMA-NOM-EFF | 90.2 | PF | 70 | | | | | | |
| G.MIN.EFF | 88.5 | CC | 010A | | | | | | |
| T. CODE | T3C | T= | 160 | | | | | | |

| NP3260 | | | |
|--------------------|--------------|--------------------------------|-----|
| SPEC. | 07K370X822G1 | | |
| D.E. BRG. | 35BC03XP30X | | |
| O.D.E. BRG. | 35BC03XP30X | | |
| GREASE | POLYREX EM | | |
| RPM MAX | 1800 | MAX. KVAR | N/A |
| BLANK | | | |
| INV.TYPE | PWM | | |
| T= | 160 | | |
| C HP FR | 60 | C HP TO | 90 |
| CT HZ FROM | 1.8 | CT HZ TO | 60 |
| VT HZ FROM | -0 | VT HZ TO | 60 |
| HTR-VOLTS | | HTR-AMPS | |
| HTR-WATTS | | MAX. SPACE HEATER TEMP. | |

AC Induction Motor Performance Data

Record # 47059

Typical performance - not guaranteed values

| Winding: 07WGX822-R032 | | Type: 0738M | Enclosure: TEFC |
|------------------------|-------------------|--------------------------------------------------|--------------------------|
| Nameplate Data | | 460 V, 60 Hz: High Voltage Connection | |
| Rated Output (HP) | 3 | Full Load Torque | 13.46 LB-FT |
| Volts | 230/460 | Start Configuration | direct on line |
| Full Load Amps | 9/4.5 | Breakdown Torque | 46.79 LB-FT |
| R.P.M. | 1165 | Pull-up Torque | 30.52 LB-FT |
| Hz | 60 Phase | Locked-rotor Torque | 34.44 LB-FT |
| NEMA Design Code | B KVA Code | Starting Current | 32 A |
| Service Factor (S.F.) | 1.15 | No-load Current | 2.35 A |
| NEMA Nom. Eff. | 90.2 Power Factor | Line-line Res. @ 25°C | 2.62 Ω |
| Rating - Duty | 40C AMB-CONT | Temp. Rise @ Rated Load | 31°C |
| S.F. Amps | | Temp. Rise @ S.F. Load | 37°C |
| | | Locked-rotor Power Factor | 22.7 |
| | | Rotor inertia | 0.945 LB-FT ² |

Load Characteristics 460 V, 60 Hz, 3 HP

| % of Rated Load | 25 | 50 | 75 | 100 | 125 | 150 | S.F. |
|-----------------|------|------|------|------|------|------|------|
| Power Factor | 33 | 51 | 62 | 69 | 73 | 75 | 72 |
| Efficiency | 83.1 | 88.7 | 90.7 | 90.3 | 89.4 | 87.7 | 89.6 |
| Speed | 1191 | 1184 | 1176 | 1170 | 1160 | 1147 | 1162 |
| Line amperes | 2.62 | 3.11 | 3.75 | 4.51 | 5.38 | 6.39 | 5 |

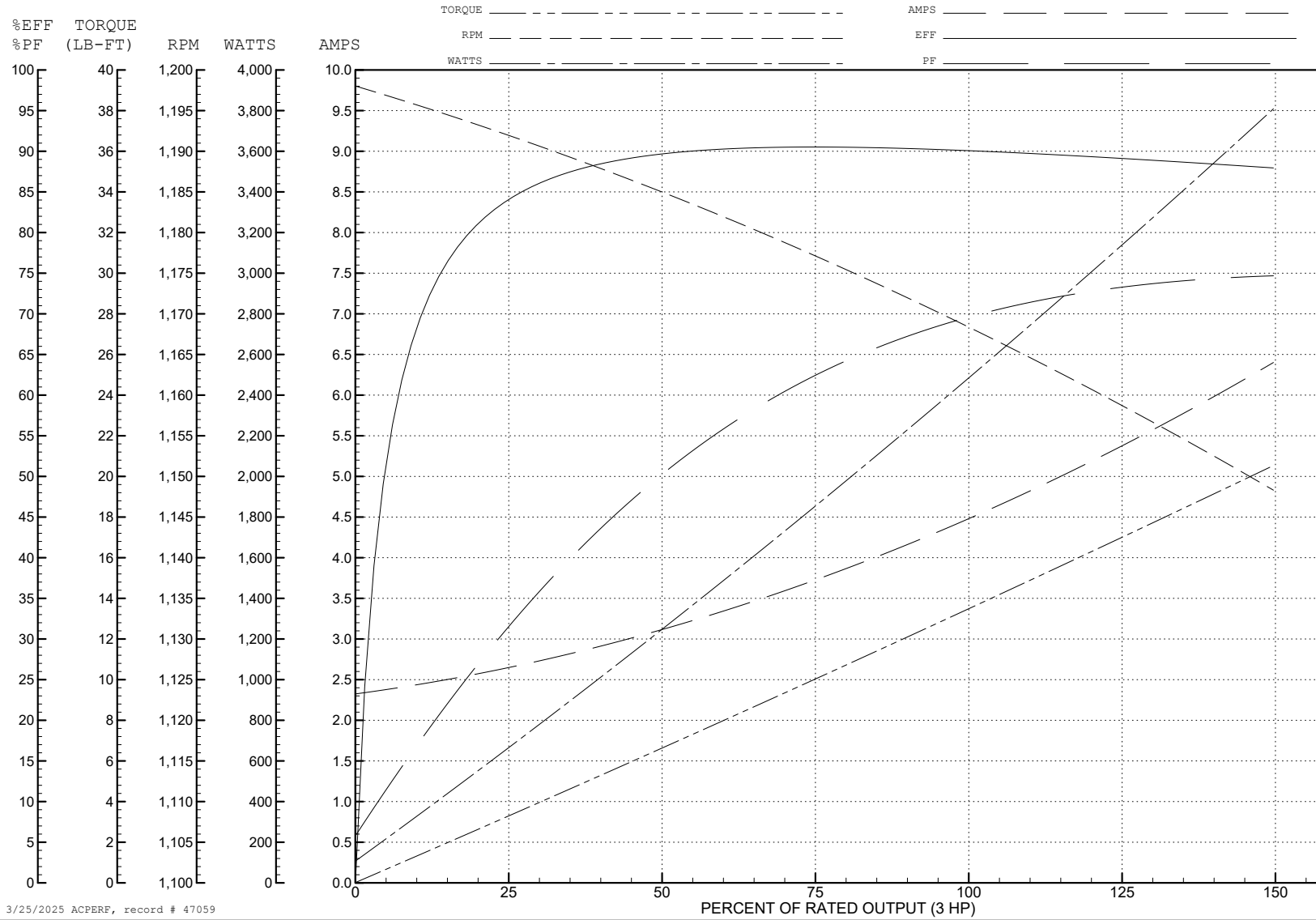
ABB Motors and Mechanical Inc.

WINDING # 07WGX822

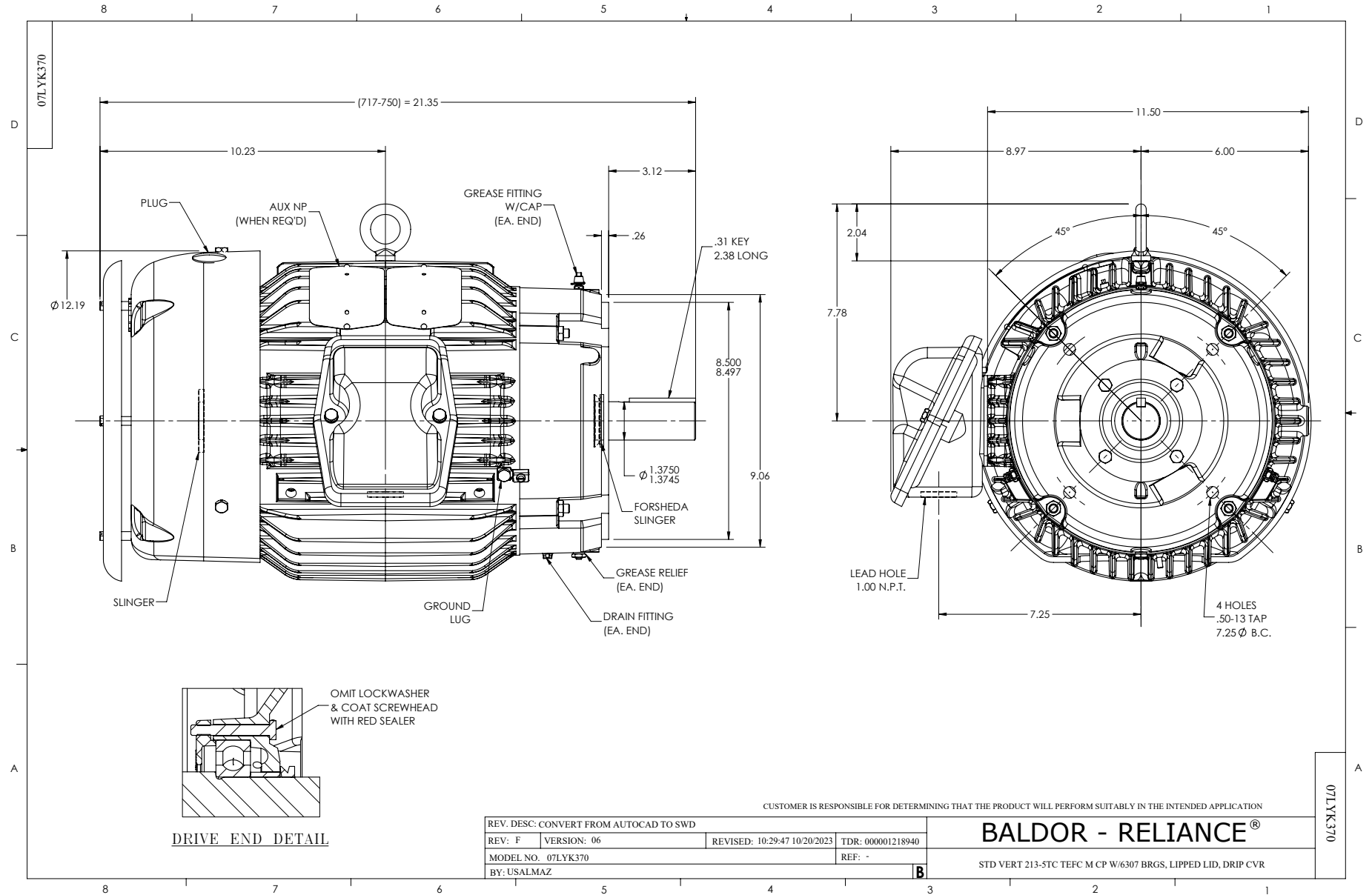
Typical performance - not guaranteed values.

3 HP 3 PH 60 HZ 1165 RPM 460 V 0738M

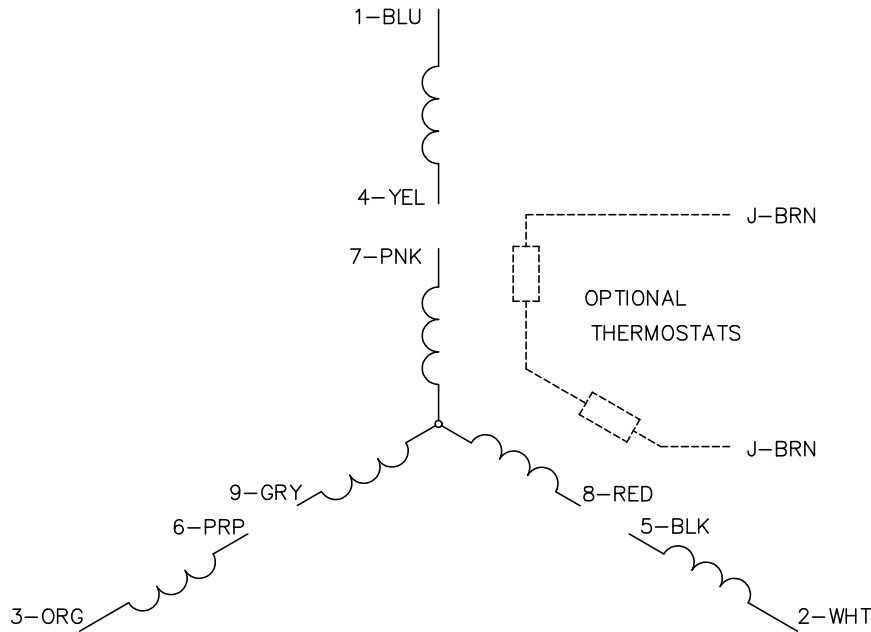
TORQUES (LB-FT): PO=46.79 PU=30.52 LR=34.44 LRA=32



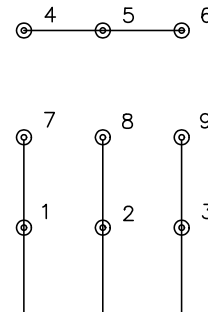
3/25/2025 ACPERF, record # 47059



CD0005

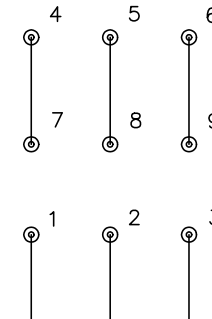


LOW VOLTAGE
(2Y)



LINE

HIGH VOLTAGE
(1Y)



LINE

NOTES:

1. INTERCHANGE ANY TWO LINE LEADS TO REVERSE ROTATION.
2. OPTIONAL THERMOSTATS ARE PROVIDED WHEN SPECIFIED.
3. ACTUAL NUMBER OF INTERNAL PARALLEL CIRCUITS MAY BE A MULTIPLE OF THOSE SHOWN ABOVE.
4. LEAD COLORS ARE OPTIONAL. LEADS MUST ALWAYS BE NUMBERED AS SHOWN.

CD0005

| | | | |
|-------------------------------------------|---------|-------------------------|--------------|
| REV. DESC: REVISE TO SHOW OPTIONAL COLORS | | | |
| REV. LTR: E | BY: JLP | REVISED: 01/19/99 10:15 | TDR: 0171435 |
| S00000 | | FILE: AAA00005140 | MDL: - |
| | | MTL: - | |

BALDOR ELECTRIC Co.

3PH, DV, 9 LEADS