

BALDOR • RELIANCE

Customer information packet

VECP2276T

7.5HP, 1180RPM, 3PH, 60HZ, 254TC, 0954M, TEFC

Class - CLI GP A,B,C,D

Division - Division II

Specifications

Enclosure	TEFC
Frame	254TC
Frame Material	Iron
Frequency	60.00 Hz
Motor Letter Type	Three Phase
Output @ Frequency	7.500 HP @ 60 HZ
Phase	3
Synchronous Speed @ Frequency	1200 RPM @ 60 HZ
Voltage @ Frequency	460.0 V @ 60 HZ 230.0 V @ 60 HZ
XP Class and Group	CL I GP A,B,C,D
XP Division	Division II
Agency Approvals	CCSA US CSA EEV NEMA PREMIUM NEMA_PREMIUM UR
Ambient Temperature	40 °C
Auxillary Box	No Auxillary Box
Auxillary Box Lead Termination	None
Base Indicator	No Mounting
Bearing Grease Type	Polyrex EM (-20F +300F)
Blower	None
Constant Torque Speed Range	1.0
Current @ Voltage	25.000 A @ 208.0 V 21.400 A @ 230.0 V 10.700 A @ 460.0 V
Design Code	A
Drip Cover	Drip Cover
Duty Rating	CONT
Efficiency @ 100% Load	91.0 %
Electrically Isolated Bearing	Not Electrically Isolated

Part detail

Revision	AT
Type	AC
Mech. spec.	09H181
Base	
Status	PRD/A
Elec. spec.	09WGX827
Layout	09LYH181
Eff. date	02-01-2024
CD Diagram	CD0005
Poles	06
Leads	9#12
Proprietary	False
Created date	10-30-2006

Feedback Device	NO FEEDBACK
Front Face Code	Standard
Front Shaft Indicator	None
Heater Indicator	No Heater
High Voltage Full Load Amps	10.7 a
Insulation Class	F
Inverter Code	Inverter Duty
KVA Code	J
Lifting Lugs	Standard Lifting Lugs
Locked Bearing Indicator	Locked Bearing
Max Speed	1800 rpm
Motor Lead Exit	Ko Box
Motor Lead Quantity/Wire Size	9 @ 12 AWG
Motor Lead Termination	Flying Leads
Motor Standards	NEMA
Motor Type	0954M
Mounting Arrangement	F1
Number of Poles	6
Overall Length	27.41 IN
Power Factor	71
Product Family	Super-E Chemical Processing
Pulley End Bearing Type	Ball
Pulley Face Code	C-Face
Pulley Shaft Indicator	Standard
Rodent Screen	None
Service Factor	1.15
Shaft Diameter	1.625 IN
Shaft Extension Location	Pulley End
Shaft Ground Indicator	No Shaft Grounding
Shaft Rotation	Reversible
Shaft Slinger Indicator	Shaft Slinger
Speed	1180 rpm
Speed Code	Single Speed
Starting Method	Direct on line

Thermal Device - Bearing	None
Thermal Device - Winding	None
Vibration Sensor Indicator	No Vibration Sensor
Winding Thermal 1	None
Winding Thermal 2	None
XP Temp Code	T3C

Nameplate

NP3995ABAL

CAT #	VECP2276T			SER				CC	010A			
SPEC	09H181X827			RATING	40C AMB-CONT							
HZ	VOLTS		AMPS		RPM	HP	CODE	SF	DES	PF	NEMA NOM. EFF	
60	230/460		21.4/10.7		1180	7.5	J	1.15	A	71 %	91 %	%
										%		%
PH	3	CL	F	MAX RPM	1800	MAX CORR KVAR	4.15	USABLE AT 208V		N/A		
IP55	FR	254TC	ENCL	TEFC	DE BRG	6309	ODE BRG	6309				
GREASE	POLYREX EM			MTR WT	338	LBS						
USABLE AT	50HZ 5HP 190/380V 18.6/9.3A					SF1.0						
CL I DIV 2 GRPS A,B,C,D				CL I ZONE 2 GRPS				IIA,IIB,IIC		TEMP T	160	C
1.0 SF ON PWM INVERTER			POWER	INV TEMP CL		180	C					
CHP	60-90	HZ	1.5:1	CT	1.0-60	HZ	60:1	VT	0-60	HZ	1000:1	
SPACE HEATER LEADS H1-H2:				TIE LIKE NUMBERS				TOGETHER				
V		A		W		MAX SPACE HEATER TEMP						

AC Induction Motor Performance Data

Record # 47260

Typical performance - not guaranteed values

Winding: 09WGX827-R040		Type: 0954M		Enclosure: TEFC	
Nameplate Data			460 V, 60 Hz: High Voltage Connection		
Rated Output (HP)	7.5		Full Load Torque	32.4 LB-FT	
Volts	230/460		Start Configuration	direct on line	
Full Load Amps	21.4/10.7		Breakdown Torque	99.2 LB-FT	
R.P.M.	1180		Pull-up Torque	39.4 LB-FT	
Hz	60 Phase	3	Locked-rotor Torque	57.8 LB-FT	
NEMA Design Code	A KVA Code	J	Starting Current	69.7 A	
Service Factor (S.F.)	1.15		No-load Current	5.84 A	
NEMA Nom. Eff.	91 Power Factor	71	Line-line Res. @ 25°C	0.89 Ω	
Rating - Duty	40C AMB-CONT		Temp. Rise @ Rated Load	31°C	
S.F. Amps			Temp. Rise @ S.F. Load	36°C	
			Rotor inertia	4.34 LB-FT ²	

Load Characteristics 460 V, 60 Hz, 7.5 HP

% of Rated Load	25	50	75	100	125	150	S.F.
Power Factor	32	52	63	71	73	75	72
Efficiency	83	89.7	91.5	91.5	91.8	91.2	91.9
Speed	1196	1192	1189	1184	1179	1173	1181
Line amperes	6.34	7.49	8.87	10.7	12.9	15.7	12

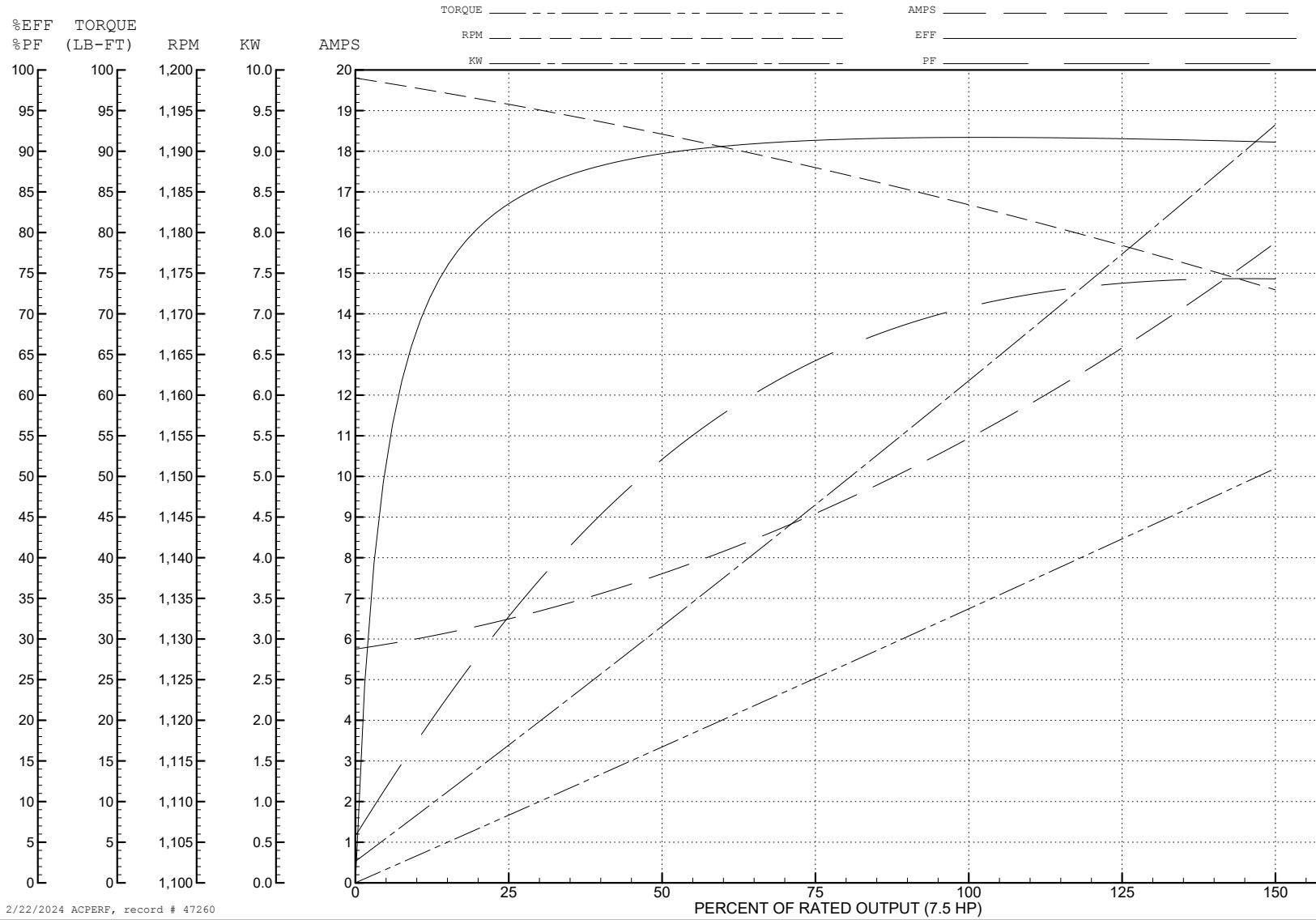
ABB Motors and Mechanical Inc.

WINDING # 09WGX827

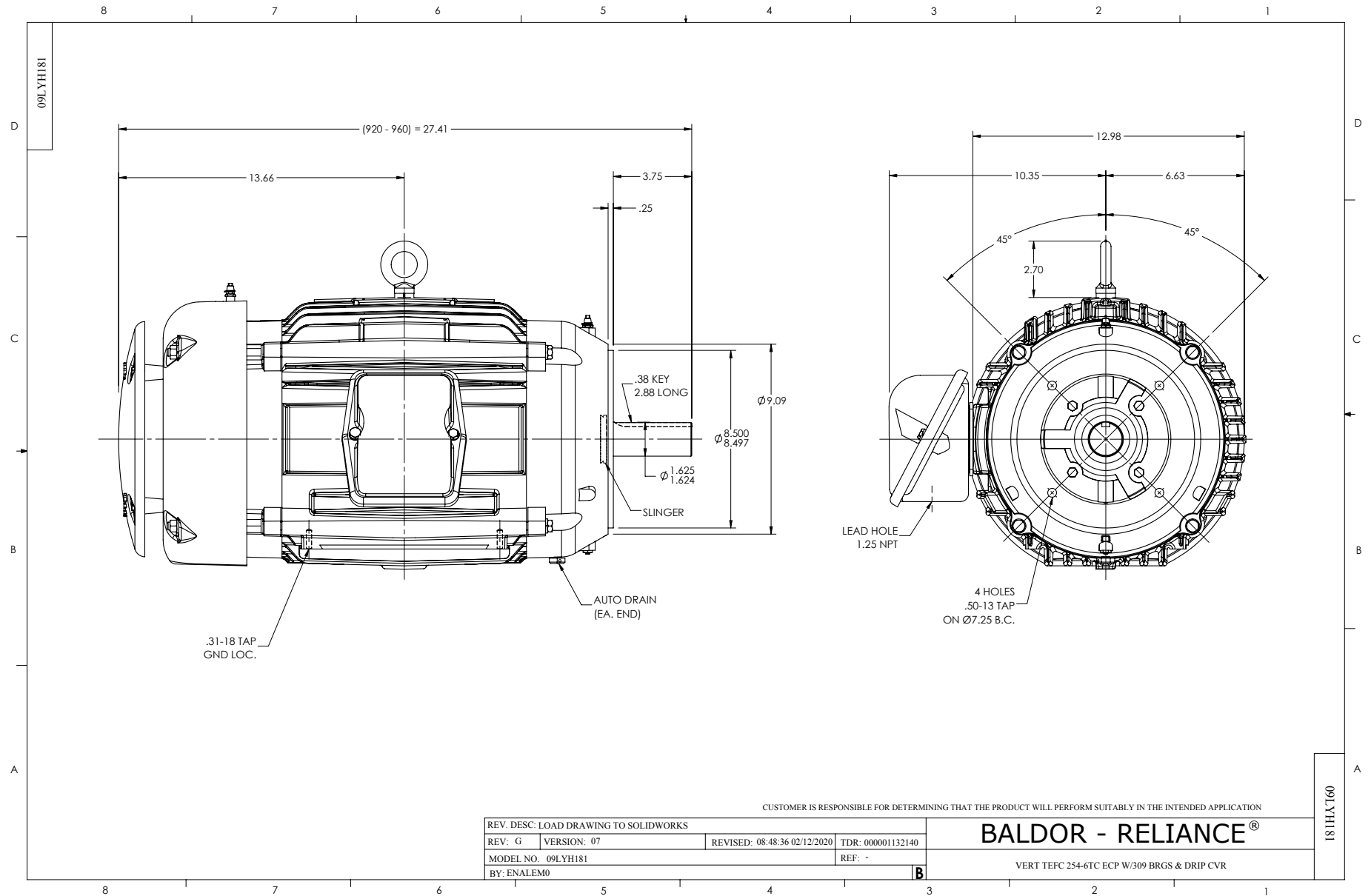
Typical performance - not guaranteed values.

7.5 HP 3 PH 60 HZ 1180 RPM 460 V 0954M

TORQUES (LB-FT): PO=99.2 PU=39.4 LR=57.8 LRA=69.7



2/22/2024 ACPERF, record # 47260



CD0005



LOW VOLTAGE
(2Y)



LINE

HIGH VOLTAGE
(1Y)



LINE

NOTES:

1. INTERCHANGE ANY TWO LINE LEADS TO REVERSE ROTATION.
2. OPTIONAL THERMOSTATS ARE PROVIDED WHEN SPECIFIED.
3. ACTUAL NUMBER OF INTERNAL PARALLEL CIRCUITS MAY BE A MULTIPLE OF THOSE SHOWN ABOVE.
4. LEAD COLORS ARE OPTIONAL. LEADS MUST ALWAYS BE NUMBERED AS SHOWN.

CD0005

REV. DESC: REVISE TO SHOW OPTIONAL COLORS			
REV. LTR: E	BY: JLP	REVISED: 01/19/99 10:15	TDR: 0171435
S00000		FILE: AAA00005140	MDL: -
		MTL: -	

BALDOR ELECTRIC Co.

3PH, DV, 9 LEADS