



Customer information packet

VEBNM3542

.75HP, 1765RPM, 3PH, 60HZ, 56C, 3514M, TENV, F1

Class - None

Division - Not Applicable

Specifications

| | |
|--------------------------------|--|
| Enclosure | TENV |
| Frame | 56C |
| Frame Material | Steel |
| Frequency | 60.00 Hz |
| Motor Letter Type | Three Phase |
| Output @ Frequency | .750 HP @ 60 HZ |
| Phase | 3 |
| Synchronous Speed @ Frequency | 1800 RPM @ 60 HZ |
| Voltage @ Frequency | 230.0 V @ 60 HZ 208.0 V @ 60 HZ 460.0 V @ 60 HZ |
| XP Class and Group | None |
| XP Division | Not Applicable |
| Agency Approvals | CSA UR |
| Ambient Temperature | 40 °C |
| Auxillary Box | No Auxillary Box |
| Auxillary Box Lead Termination | None |
| Base Indicator | No Mounting |
| Bearing Grease Type | Polyrex EM (-20F +300F) |
| Blower | None |
| Current @ Voltage | 2.400 A @ 208.0 V 2.360 A @ 208.0 V 2.280 A @ 230.0 V 1.140 A @ 460.0 V |
| Design Code | B |
| Drip Cover | No Drip Cover |
| Duty Rating | CONT |
| Efficiency @ 100% Load | 82.5 % |
| Electrically Isolated Bearing | Not Electrically Isolated |
| Feedback Device | NO FEEDBACK |
| Front Shaft Indicator | None |

Part detail

| | |
|--------------|------------|
| Revision | B |
| Type | AC |
| Mech. spec. | 35F893 |
| Base | |
| Status | PRD/A |
| Elec. spec. | 35WGG069 |
| Layout | 35LYF893 |
| Eff. date | 03-21-2023 |
| CD Diagram | CD0005 |
| Poles | 04 |
| Leads | 9#18 |
| Proprietary | False |
| Created date | 01-10-2022 |

| | |
|-------------------------------|---------------------|
| Heater Indicator | No Heater |
| High Voltage Full Load Amps | 1.1 a |
| Insulation Class | F |
| Inverter Code | Not Inverter |
| KVA Code | K |
| Lifting Lugs | No Lifting Lugs |
| Locked Bearing Indicator | Locked Bearing |
| Motor Lead Quantity/Wire Size | 9 @ 18 AWG |
| Motor Lead Termination | Flying Leads |
| Motor Standards | NEMA |
| Motor Type | 3514M |
| Mounting Arrangement | F1 |
| Number of Poles | 4 |
| Overall Length | 15.26 IN |
| Power Factor | 74 |
| Product Family | General Purpose |
| Pulley End Bearing Type | Ball |
| Pulley Face Code | C-Face |
| Pulley Shaft Indicator | Standard |
| Rodent Screen | None |
| Service Factor | 1.15 |
| Shaft Diameter | 0.625 IN |
| Shaft Ground Indicator | No Shaft Grounding |
| Shaft Rotation | Reversible |
| Shaft Slinger Indicator | No Slinger |
| Speed | 1765 rpm |
| Speed Code | Single Speed |
| Starting Method | Direct on line |
| Thermal Device - Bearing | None |
| Thermal Device - Winding | None |
| Vibration Sensor Indicator | No Vibration Sensor |
| Winding Thermal 1 | None |
| Winding Thermal 2 | None |

Nameplate

| NP2116L | | | | | | | | | |
|---------------------|-------------------|-------------|------|-----------------------|----|-----------|-----------|---|--|
| CAT.NO. | VEBNM3542 | | | | | | | | |
| SPEC. | 35F893G069G1 | | | | | | | | |
| HP | .75 | | | | | | | | |
| VOLTS | 208-230/460 | | | | | | | | |
| AMP | 2.36-2.28/1.14 | | | | | | | | |
| RPM | 1765 | | | | | | | | |
| FRAME | 56C | | | HZ | 60 | | PH | 3 | |
| SER.F. | 1.15 | CODE | K | DES | B | CL | F | | |
| NEMA-NOM-EFF | 82.5 | PF | 74 | | | | | | |
| RATING | 40C AMB-CONT | | | | | | | | |
| CC | | | | USABLE AT 208V | | | | | |
| DE | 6205 | ODE | 6203 | | | | | | |
| ENCL | TENV | SN | | | | | | | |
| | SFA 2.6-2.52/1.26 | | | | | | | | |

AC Induction Motor Performance Data

Record # 87328

Typical performance - not guaranteed values

| Winding: 35WGG069-R012 | | Type: 3514M | Enclosure: TENV | | | |
|------------------------|----------------|------------------------|--|--------------------------|--------|------|
| Nameplate Data | | | 460 V, 60 Hz: High Voltage Connection | | | |
| Rated Output (HP) | .75 | Full Load Torque | 2.25 LB-FT | | | |
| Volts | 208-230/460 | Start Configuration | direct on line | | | |
| Full Load Amps | 2.36-2.28/1.14 | Breakdown Torque | 7.38 LB-FT | | | |
| R.P.M. | 1730 | Pull-up Torque | 4.07 LB-FT | | | |
| Hz | 60 Phase | 3 | Locked-rotor Torque | 4.7 LB-FT | | |
| NEMA Design Code | B | KVA Code | K | Starting Current | 7.7 A | |
| Service Factor (S.F.) | 1.15 | No-load Current | 0.734 A | | | |
| NEMA Nom. Eff. | 82.5 | Power Factor | 74 | Line-line Res. @ 25°C | 31.8 Ω | |
| Rating - Duty | 40C | AMB-CONT | Temp. Rise @ Rated Load | | | 56°C |
| S.F. Amps | 2.6-2.52/1.26 | Temp. Rise @ S.F. Load | | | 67°C | |
| | | | Locked-rotor Power Factor | 64.9 | | |
| | | | Rotor inertia | 0.101 lb-ft ² | | |

Load Characteristics 460 V, 60 Hz, 0.75 HP

| % of Rated Load | 25 | 50 | 75 | 100 | 125 | 150 | S.F. |
|-----------------|-------|-------|-------|------|------|------|------|
| Power Factor | 33 | 52 | 65 | 74 | 80 | 83 | 78 |
| Efficiency | 71.4 | 81 | 83.3 | 83.6 | 82.7 | 81.2 | 83.1 |
| Speed | 1790 | 1782 | 1773 | 1763 | 1753 | 1740 | 1757 |
| Line amperes | 0.761 | 0.849 | 0.976 | 1.14 | 1.34 | 1.57 | 1.26 |

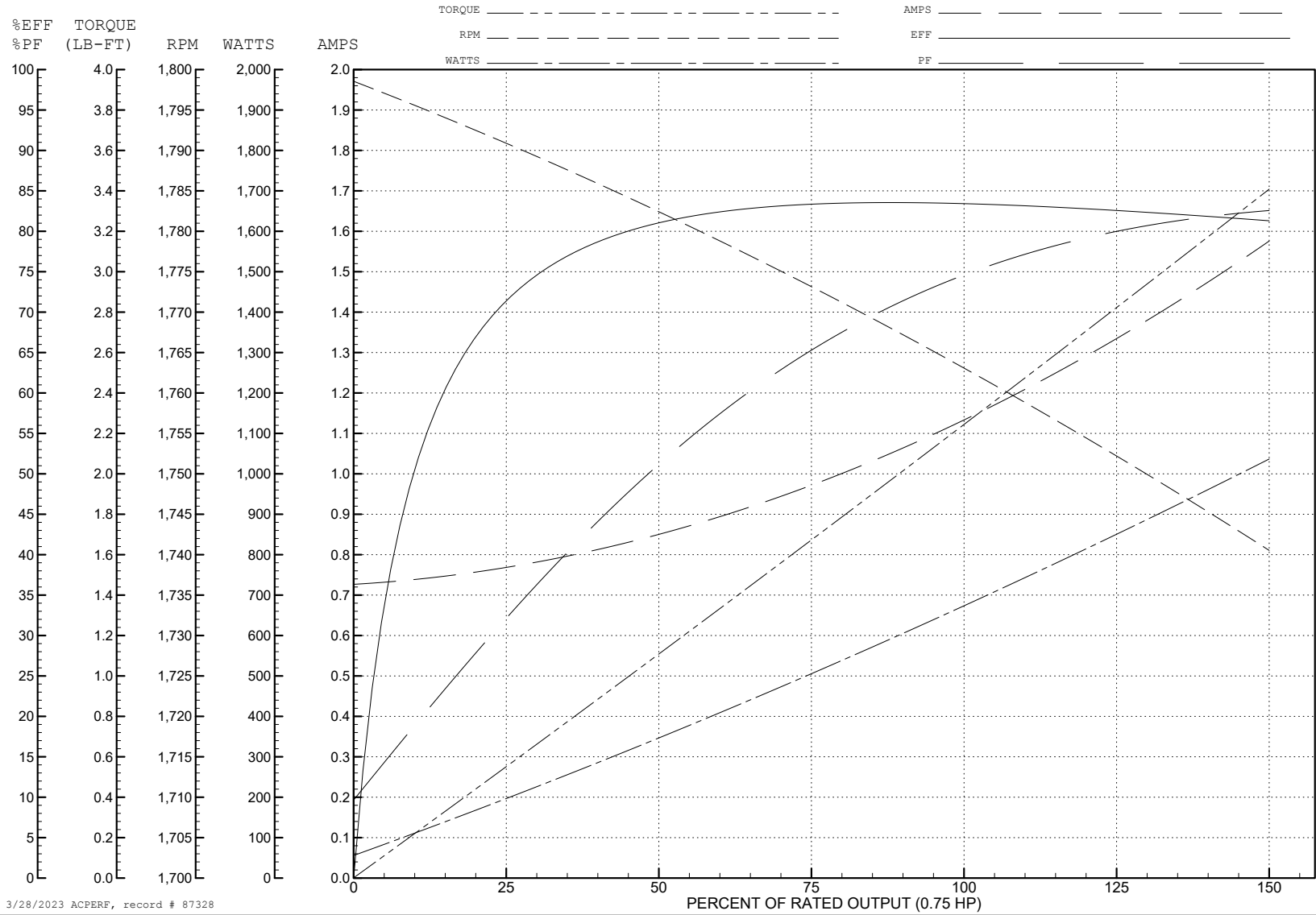
ABB Motors and Mechanical Inc.

WINDING # 35WGG069

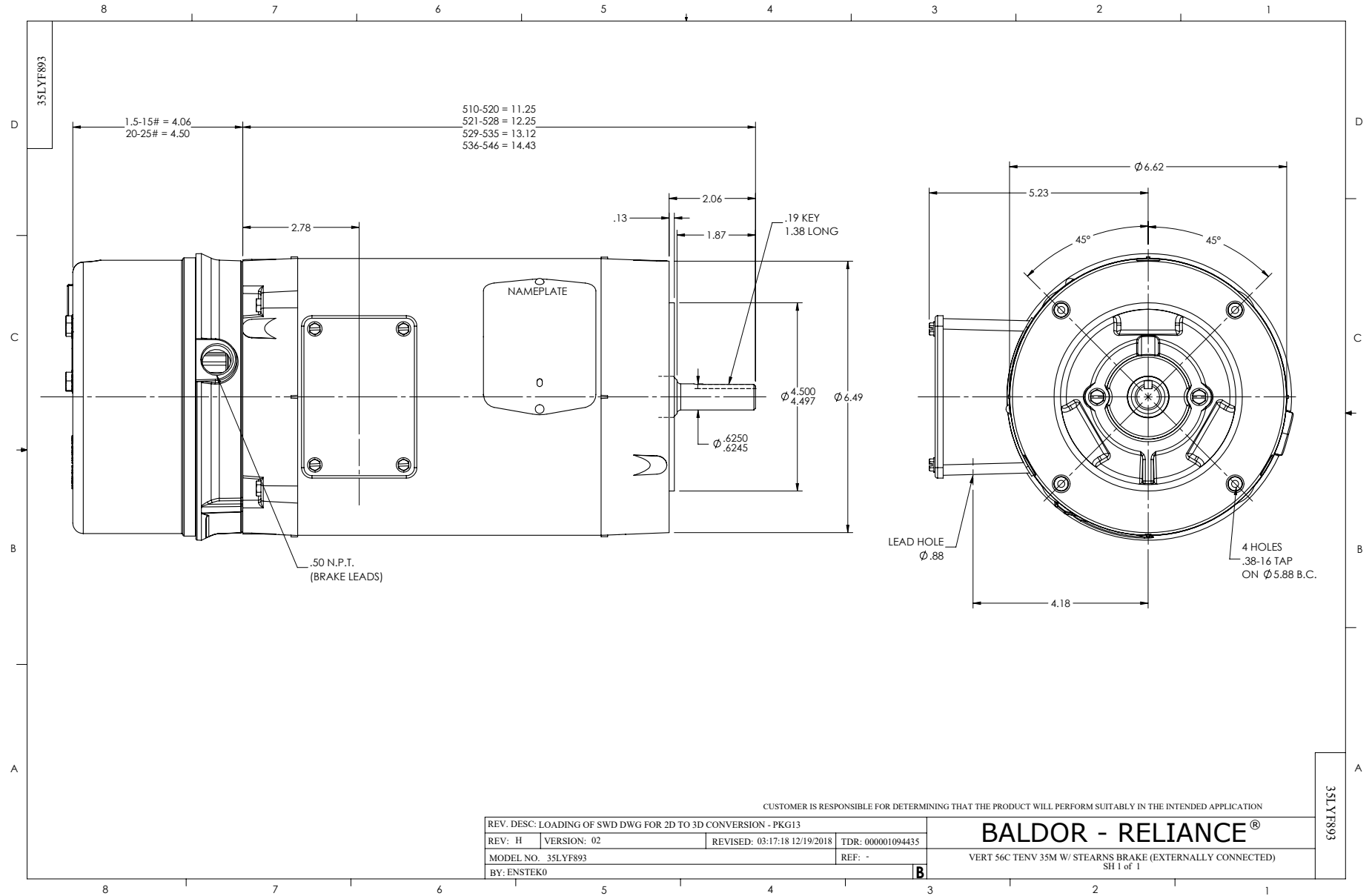
0.75 HP 3 PH 60 HZ 1730 RPM 460 V 3514M

Typical performance - not guaranteed values.

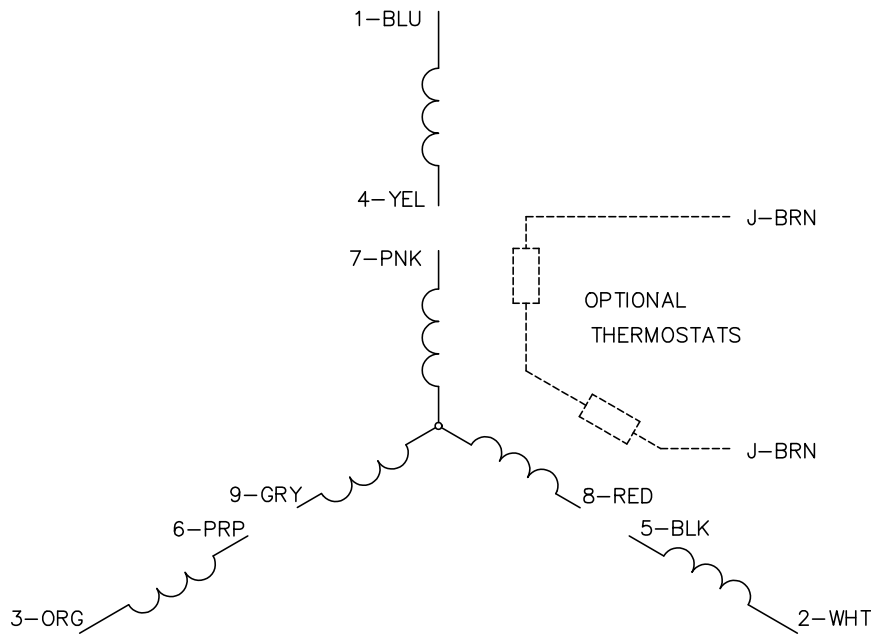
TORQUES (LB-FT): PO=7.38 PU=4.07 LR=4.7 LRA=7.7



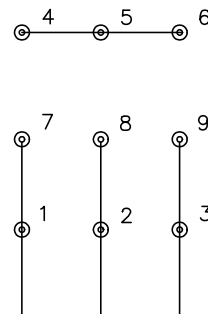
3/28/2023 ACPERF, record # 87328



CD0005

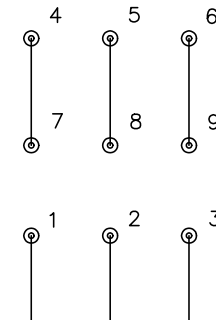


LOW VOLTAGE
(2Y)



LINE

HIGH VOLTAGE
(1Y)



LINE

NOTES:

1. INTERCHANGE ANY TWO LINE LEADS TO REVERSE ROTATION.
2. OPTIONAL THERMOSTATS ARE PROVIDED WHEN SPECIFIED.
3. ACTUAL NUMBER OF INTERNAL PARALLEL CIRCUITS MAY BE A MULTIPLE OF THOSE SHOWN ABOVE.
4. LEAD COLORS ARE OPTIONAL. LEADS MUST ALWAYS BE NUMBERED AS SHOWN.

CD0005

| | | | |
|---|---------|-------------------------|--------------|
| REV. DESC: REVISE TO SHOW OPTIONAL COLORS | | | |
| REV. LTR: E | BY: JLP | REVISED: 01/19/99 10:15 | TDR: 0171435 |
| S00000 | | FILE: AAA00005140 | MDL: - |
| | | MTL: - | |

BALDOR ELECTRIC Co.

3PH, DV, 9 LEADS