

BALDOR • RELIANCE

Customer information packet

VEBNM3538

.5HP, 1775RPM, 3PH, 60HZ, 56C, 3514M, TENV, F1

Class - None

Division - Not Applicable

Specifications

Enclosure	TENV
Frame	56C
Frame Material	Steel
Frequency	60.00 Hz
Haz Area Class and Group	None
Haz Area Division	Not Applicable
Motor Letter Type	Three Phase
Output @ Frequency	.500 HP @ 60 HZ
Phase	3
Synchronous Speed @ Frequency	1800 RPM @ 60 HZ
Voltage @ Frequency	230.0 V @ 60 HZ 460.0 V @ 60 HZ
Agency Approvals	CSA UR
Ambient Temperature	40 °C
Auxillary Box	No Auxillary Box
Auxillary Box Lead Termination	None
Base Indicator	No Mounting
Bearing Grease Type	Polyrex EM (-20F +300F)
Blower	None
Current @ Voltage	2.020 A @ 230.0 V 1.010 A @ 460.0 V
Design Code	B
Drip Cover	No Drip Cover
Duty Rating	CONT
Efficiency @ 100% Load	81.5 %
Electrically Isolated Bearing	Not Electrically Isolated
Feedback Device	NO FEEDBACK
Front Shaft Indicator	None
Heater Indicator	No Heater
High Voltage Full Load Amps	1.0 a
Insulation Class	F

Part detail

Revision	B
Type	AC
Mech. spec.	35F893
Base	
Status	PRD/A
Elec. spec.	35WGG069
Layout	35LYF893
Eff. date	04-30-2024
CD Diagram	CD0005
Poles	04
Leads	9#18
Proprietary	False
Created date	09-15-2023

Inverter Code	Inverter Ready
KVA Code	P
Lifting Lugs	No Lifting Lugs
Locked Bearing Indicator	Locked Bearing
Motor Lead Quantity/Wire Size	9 @ 18 AWG
Motor Lead Termination	Flying Leads
Motor Standards	NEMA
Motor Type	3514M
Mounting Arrangement	F1
Number of Poles	4
Overall Length	15.31 IN
Power Factor	58
Product Family	General Purpose
Pulley End Bearing Type	Ball
Pulley Face Code	C-Face
Pulley Shaft Indicator	Standard
Rodent Screen	None
Service Factor	1.15
Shaft Diameter	0.625 IN
Shaft Ground Indicator	No Shaft Grounding
Shaft Rotation	Reversible
Shaft Slinger Indicator	No Slinger
Speed	1775 rpm
Speed Code	Single Speed
Starting Method	Direct on line
Thermal Device - Bearing	None
Thermal Device - Winding	None
Vibration Sensor Indicator	No Vibration Sensor
Winding Thermal 1	None
Winding Thermal 2	None

Nameplate

NP2116L									
CAT.NO.	VEBNM3538								
SPEC.	35F893G069G2								
HP	.5								
VOLTS	230/460								
AMP	2.02/1.01								
RPM	1775								
FRAME	56C			HZ	60		PH	3	
SER.F.	1.15	CODE	P	DES	B	CL	F		
NEMA-NOM-EFF	81.5	PF	58						
RATING	40C AMB-CONT								
CC									
DE	6205	ODE	6203						
ENCL	TENV	SN							
	SFA 2.2/1.1								

AC Induction Motor Performance Data

Record # 102249

Typical performance - not guaranteed values

Winding: 35WGG069-R082		Type: 3514M	Enclosure: TENV
Nameplate Data		460 V, 60 Hz: High Voltage Connection	
Rated Output (HP)	.5	Full Load Torque	1.48 LB-FT
Volts	230/460	Start Configuration	direct on line
Full Load Amps	2.02/1.01	Breakdown Torque	8 LB-FT
R.P.M.	1775	Pull-up Torque	4.4 LB-FT
Hz	60 Phase	Locked-rotor Torque	5.1 LB-FT
NEMA Design Code	B KVA Code	Starting Current	8.4 A
Service Factor (S.F.)	1.15	No-load Current	0.85 A
NEMA Nom. Eff.	81.5 Power Factor	Line-line Res. @ 25°C	30.3 Ω
Rating - Duty	40C AMB-CONT	Temp. Rise @ Rated Load	19°C
S.F. Amps		Temp. Rise @ S.F. Load	21°C
		Locked-rotor Power Factor	66.8
		Rotor inertia	0.101 lb-ft ²

Load Characteristics 460 V, 60 Hz, 0.5 HP

% of Rated Load	25	50	75	100	125	150	S.F.
Power Factor	24	37	48	58	65	71	62
Efficiency	58.9	72.5	78.4	80.5	81.6	81.5	81.2
Speed	1793	1788	1782	1776	1771	1763	1773
Line amperes	0.85	0.89	0.94	1.01	1.11	1.21	1.07

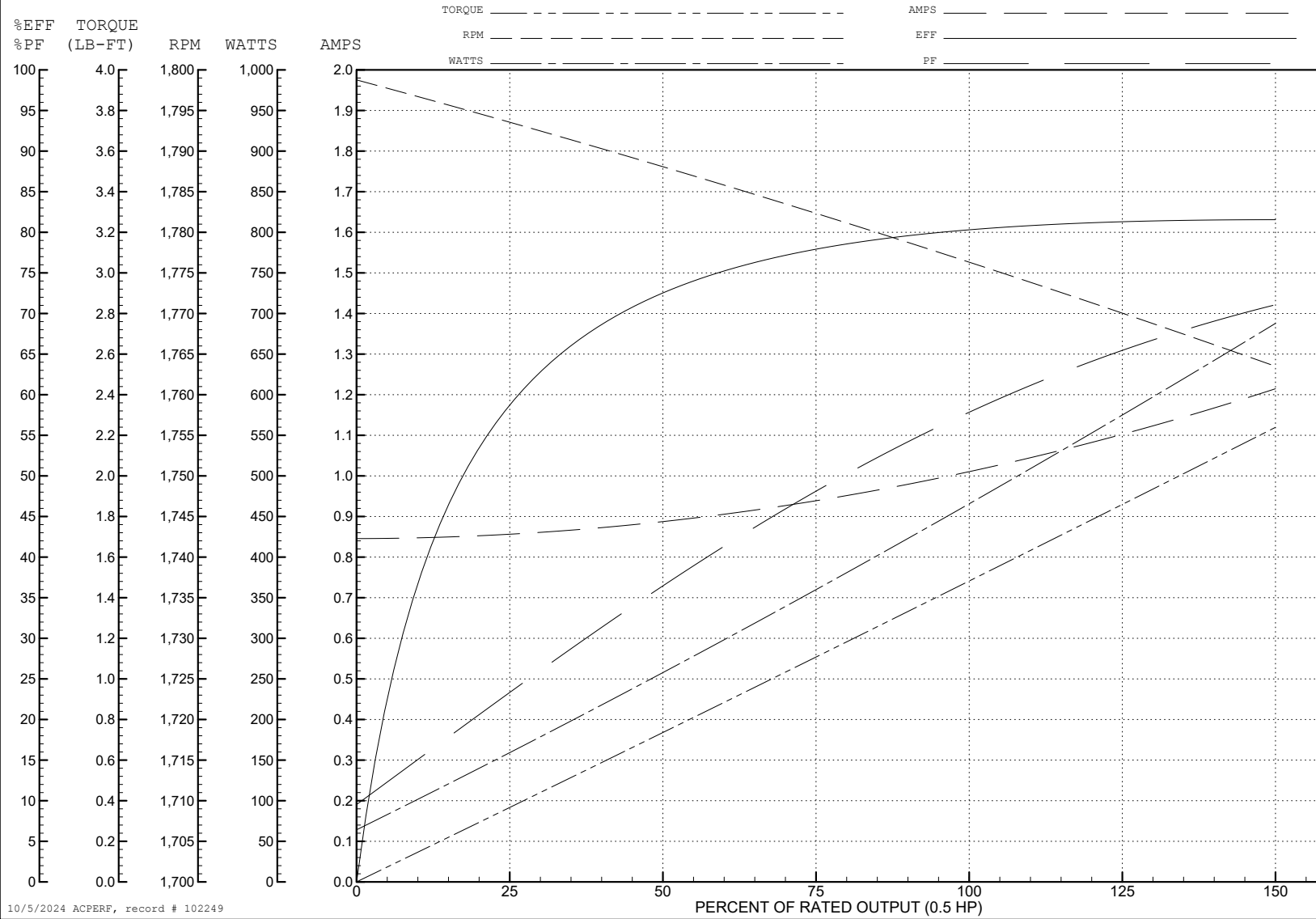
ABB Motors and Mechanical Inc.

WINDING # 35WGG069

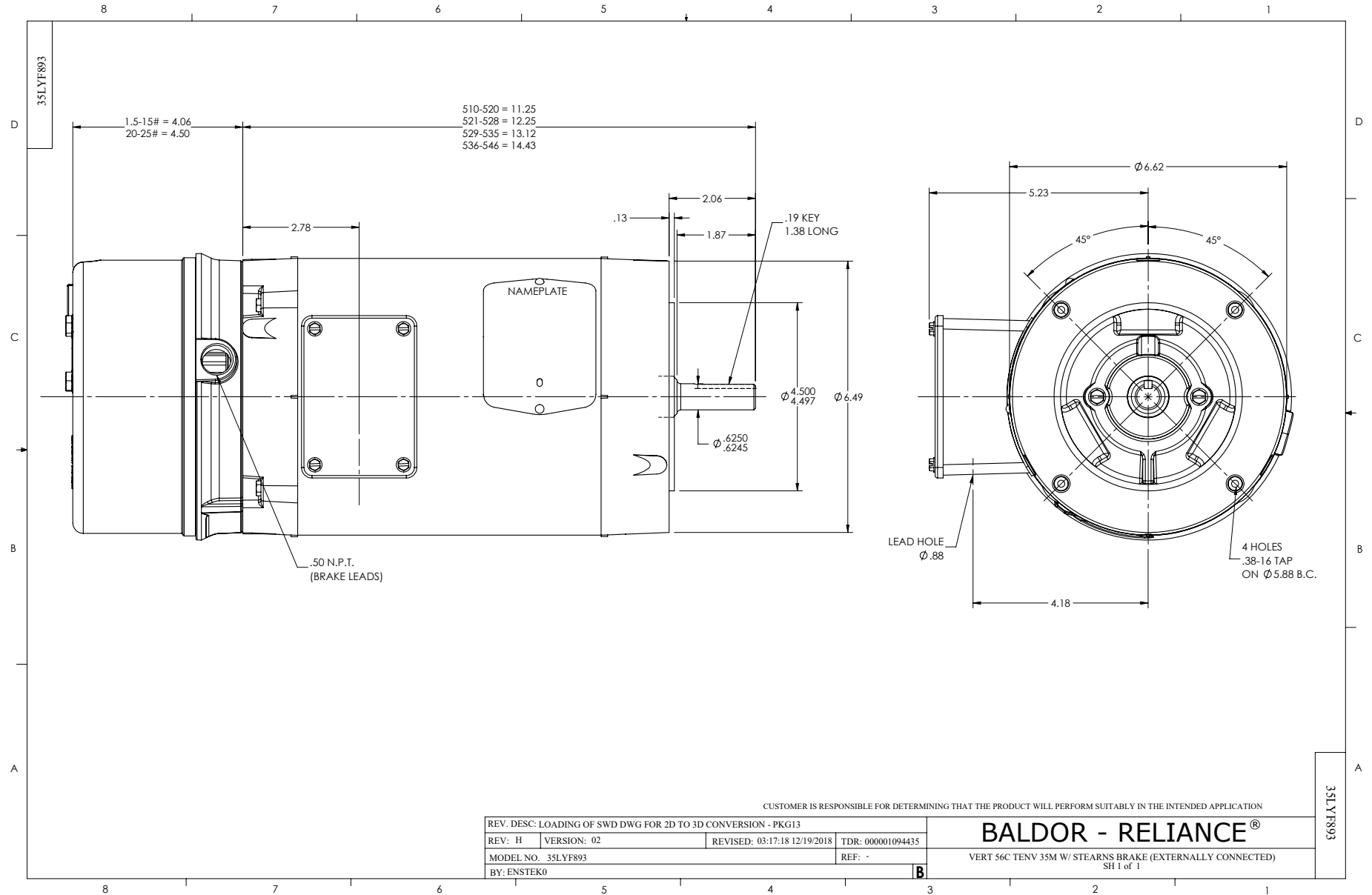
0.5 HP 3 PH 60 HZ 1775 RPM 460 V 3514M

Typical performance - not guaranteed values.

TORQUES (LB-FT) : PO=8 PU=4.4 LR=5.1 LRA=8.4



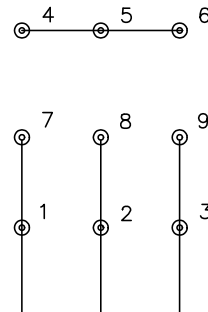
10/5/2024 ACPERF, record # 102249



CD0005



LOW VOLTAGE
(2Y)



LINE

HIGH VOLTAGE
(1Y)



LINE

NOTES:

1. INTERCHANGE ANY TWO LINE LEADS TO REVERSE ROTATION.
2. OPTIONAL THERMOSTATS ARE PROVIDED WHEN SPECIFIED.
3. ACTUAL NUMBER OF INTERNAL PARALLEL CIRCUITS MAY BE A MULTIPLE OF THOSE SHOWN ABOVE.
4. LEAD COLORS ARE OPTIONAL. LEADS MUST ALWAYS BE NUMBERED AS SHOWN.

CD0005

REV. DESC: REVISE TO SHOW OPTIONAL COLORS			
REV. LTR: E	BY: JLP	REVISED: 01/19/99 10:15	TDR: 0171435
S00000		FILE: AAA00005140	MDL: -
		MTL: -	

BALDOR ELECTRIC Co.

3PH, DV, 9 LEADS