



---

# Customer information packet

## VEBM3615T-D

5HP, 1755RPM, 3PH, 60HZ, 184TC, 3642M, TEFC, F1

Class - None

Division - Not Applicable

## Specifications

Enclosure	TEFC
Frame	184TC
Frame Material	Steel
Frequency	60.00 Hz
Haz Area Class and Group	None
Haz Area Division	Not Applicable
Motor Letter Type	Three Phase
Output @ Frequency	5.000 HP @ 60 HZ
Phase	3
Synchronous Speed @ Frequency	1800 RPM @ 60 HZ
Voltage @ Frequency	460.0 V @ 60 HZ 230.0 V @ 60 HZ
Agency Approvals	CE CURUSEEV NEMA PREMIUM UKCA WEEE
Ambient Temperature	40 °C
Auxillary Box	No Auxillary Box
Auxillary Box Lead Termination	None
Base Indicator	No Mounting
Bearing Grease Type	Polyrex EM (-20F +300F)
Blower	None
Current @ Voltage	6.700 A @ 460.0 V 14.000 A @ 208.0 V 13.400 A @ 230.0 V
Design Code	B
Drip Cover	No Drip Cover
Duty Rating	CONT
Efficiency @ 100% Load	89.5 %
Electrically Isolated Bearing	Not Electrically Isolated
Feedback Device	NO FEEDBACK

## Part detail

Revision	E
Type	AC
Mech. spec.	36M111
Base	
Status	PRD/A
Elec. spec.	36WGQ032
Layout	36LYM111
Eff. date	02-12-2024
CD Diagram	CD0005
Poles	04
Leads	9#16
Proprietary	False
Created date	12-04-2020

Front Shaft Indicator	None
Heater Indicator	No Heater
High Voltage Full Load Amps	6.7 a
Insulation Class	F
Inverter Code	Inverter Ready
KVA Code	J
Lifting Lugs	No Lifting Lugs
Locked Bearing Indicator	Locked Bearing
Motor Lead Quantity/Wire Size	9 @ 16 AWG
Motor Lead Termination	Flying Leads
Motor Standards	NEMA
Motor Type	3642M
Mounting Arrangement	F1
Number of Poles	4
Overall Length	23.14 IN
Power Factor	78
Product Family	General Purpose
Pulley End Bearing Type	Ball
Pulley Face Code	C-Face
Pulley Shaft Indicator	Standard
Rodent Screen	None
Service Factor	1.15
Shaft Diameter	1.125 IN
Shaft Ground Indicator	No Shaft Grounding
Shaft Rotation	Reversible
Shaft Slinger Indicator	No Slinger
Speed	1755 rpm
Speed Code	Single Speed
Starting Method	Direct on line
Thermal Device - Bearing	None
Thermal Device - Winding	None
Vibration Sensor Indicator	No Vibration Sensor
Winding Thermal 1	None
Winding Thermal 2	None

**Nameplate**

<b>NP2934L</b>							
<b>CAT.NO.</b>	VEBM3615T-D						
<b>SPEC.</b>	36M111Q032G1						
<b>HP</b>	5/3.7KW						
<b>VOLTS</b>	230/460						
<b>AMP</b>	13.4/6.7						
<b>R.P.M. (1/MIN)</b>	1755						
<b>FRAME</b>	184TC	<b>HZ</b>	60	<b>PH</b>	3		
<b>SER.F.</b>	1.15	<b>CODE</b>	J	<b>DES</b>	B	<b>CL</b>	F
<b>NEMA-NOM-EFF</b>	89.5	<b>PF</b>	78				
<b>RATING</b>	40C AMB-S1 CONT						
<b>CC</b>	010A						
<b>DE</b>	6206	<b>ODE</b>	6205				
<b>ENCL</b>	TEFC	<b>SN</b>					
	IE3-90.1(75%)89.4(50%)						

**AC Induction Motor Performance Data**

Record # 89917

Typical performance - not guaranteed values

Winding: 36WGQ032-R001		Type: 3642M		Enclosure: TEFC	
<b>Nameplate Data</b>			<b>460 V, 60 Hz: High Voltage Connection</b>		
Rated Output (HP)		5	Full Load Torque		15 LB-FT
Volts		230/460	Start Configuration		direct on line
Full Load Amps		13.4/6.7	Breakdown Torque		53.1 LB-FT
R.P.M.		1755	Pull-up Torque		23.4 LB-FT
Hz	60 Phase	3	Locked-rotor Torque		34.7 LB-FT
NEMA Design Code	B KVA Code	J	Starting Current		49.8 A
Service Factor (S.F.)		1.15	No-load Current		3.31 A
NEMA Nom. Eff.	89.5 Power Factor	78	Line-line Res. @ 25°C		2.4 Ω
Rating - Duty		40C AMB-CONT	Temp. Rise @ Rated Load		71°C
S.F. Amps			Temp. Rise @ S.F. Load		86°C
			Locked-rotor Power Factor		40.6635
			Rotor inertia		0.391 lb-ft <sup>2</sup>

**Load Characteristics 460 V, 60 Hz, 5 HP**

% of Rated Load	25	50	75	100	125	150	S.F.
Power Factor	38	60	72	79	82	84	81
Efficiency	83.8	88.9	89.8	89.5	88.4	86.8	88.8
Speed	1789	1778	1766	1753	1738	1722	1744
Line amperes	3.64	4.39	5.45	6.66	8.08	9.67	7.51

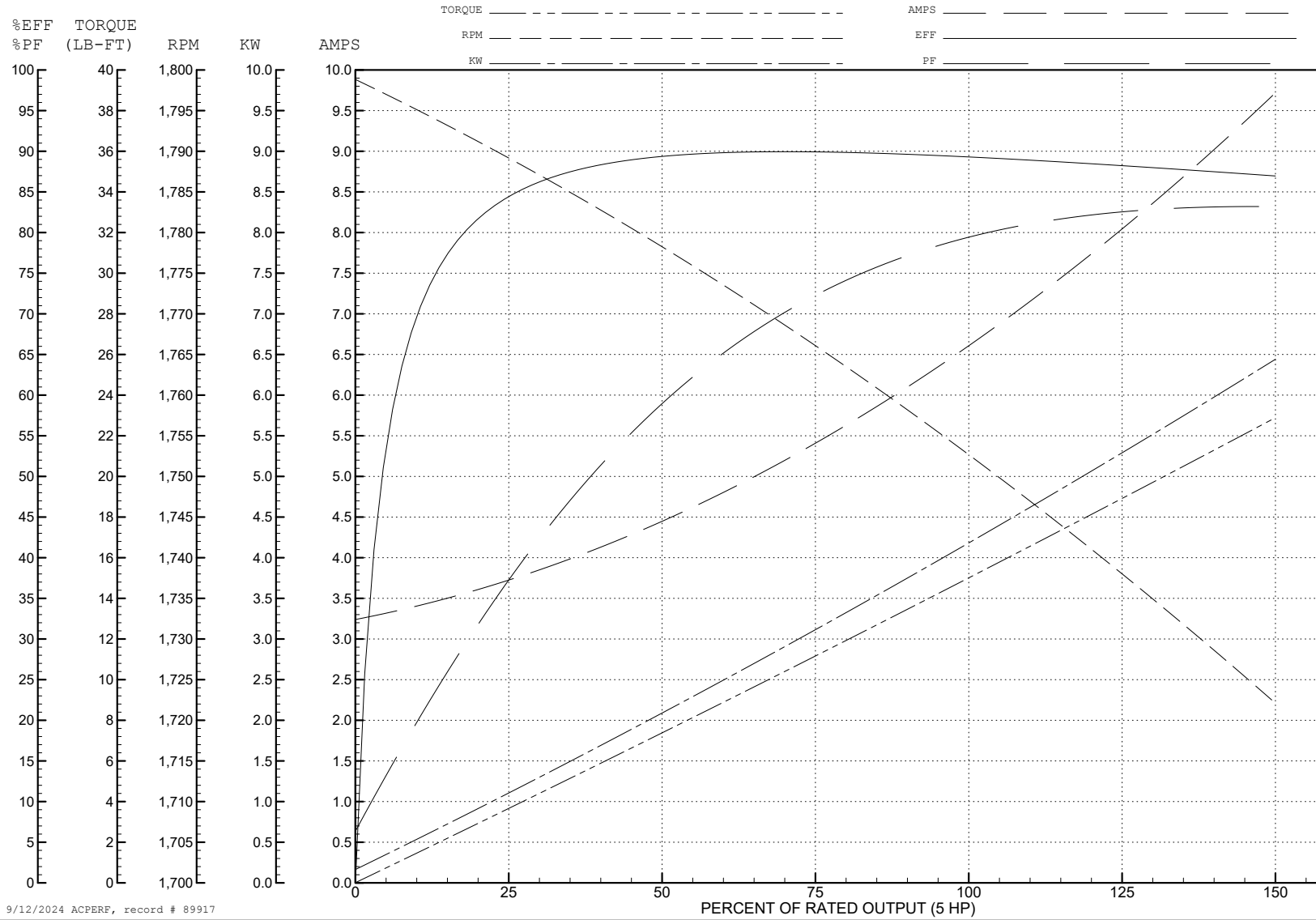
ABB Motors and Mechanical Inc.

WINDING # 36WGQ032

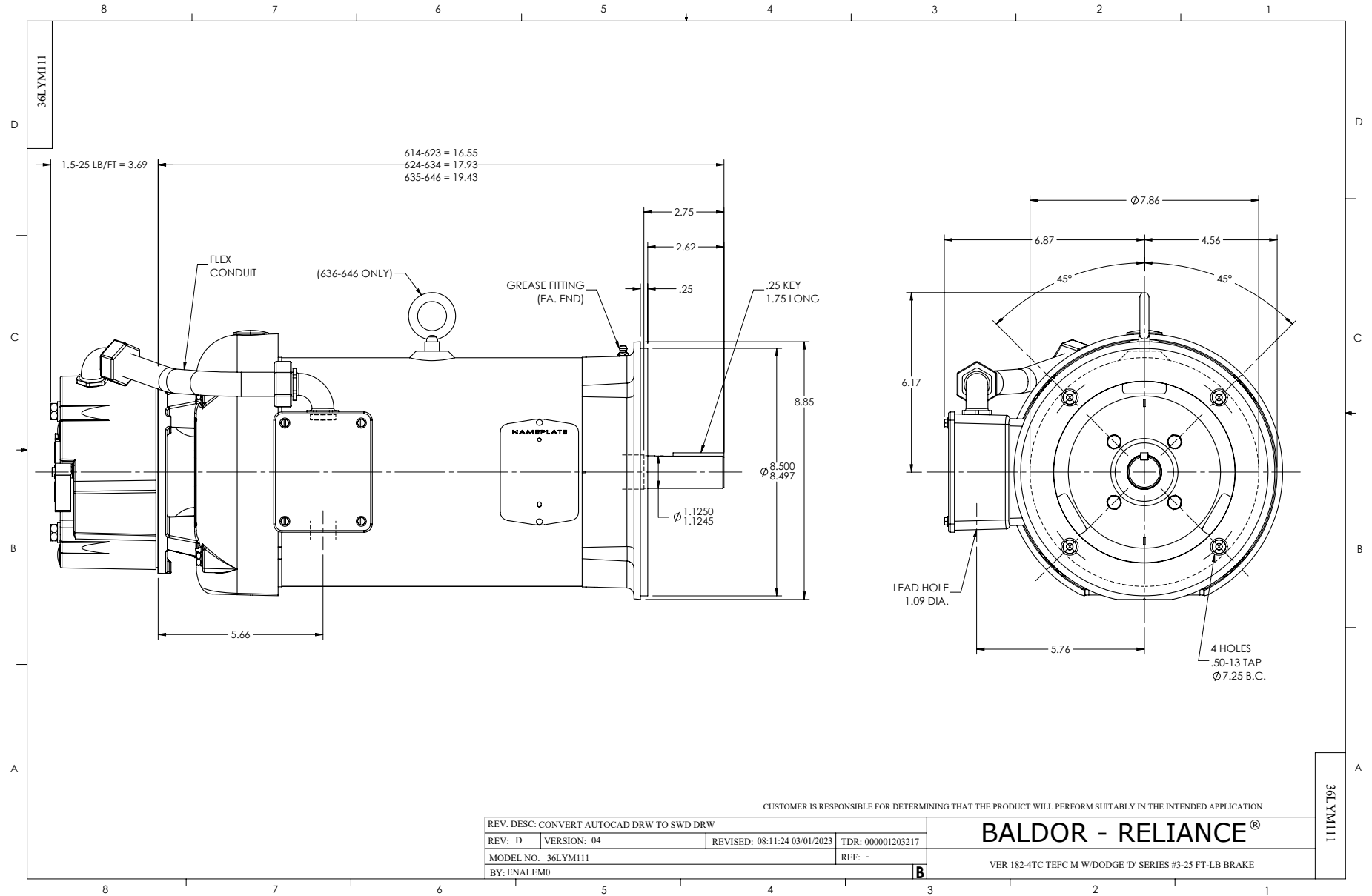
5 HP 3 PH 60 HZ 1755 RPM 460 V 3642M

Typical performance - not guaranteed values.

TORQUES (LB-FT): PO=53.1 PU=23.4 LR=34.7 LRA=49.8



9/12/2024 ACPERF, record # 89917



CD0005



LOW VOLTAGE  
(2Y)



LINE

HIGH VOLTAGE  
(1Y)



LINE

**NOTES:**

1. INTERCHANGE ANY TWO LINE LEADS TO REVERSE ROTATION.
2. OPTIONAL THERMOSTATS ARE PROVIDED WHEN SPECIFIED.
3. ACTUAL NUMBER OF INTERNAL PARALLEL CIRCUITS MAY BE A MULTIPLE OF THOSE SHOWN ABOVE.
4. LEAD COLORS ARE OPTIONAL. LEADS MUST ALWAYS BE NUMBERED AS SHOWN.

CD0005

REV. DESC: REVISE TO SHOW OPTIONAL COLORS			
REV. LTR: E	BY: JLP	REVISED: 01/19/99 10:15	TDR: 0171435
S00000		FILE: AAA00005140	MDL: -
		MTL: -	

**BALDOR ELECTRIC Co.**

3PH, DV, 9 LEADS



CD2120

WIRING CONNECTIONS (1 PHASE VAC)

	POWER LINE A	POWER LINE B	CAP TOGETHER	CAP ALONE
AC LOW VOLT.	B1	B2	B3 & B5	B4
AC HIGH VOLT.	B1 & B5	B2	---	B3 CAP ALONE B4 CAP ALONE
DC VOLT.	B1	B2	B3 & B5	B4

B1 WHITE  
B2 BLACK  
B3 GRAY  
B4 BLUE  
B5 RED

CD2120

REV. DESC: NEW		TDR: 000000741785	
REV. LTR: -	VERSION: 00	REVISD: 12: 28:11 04/12/2012	
FILE: \CKA\00037\282		BY: CKRONSO	
MTL: -			

**BALDOR • DODGE • RELIANCE**

D-SERIES MOTOR BRAKE 5LD AC\DC  
SH 1 of 1