

BALDOR • RELIANCE

Customer information packet

VEBM3611T-S

3/2.2KW 38KG IP44HP, 1764RPM, 3PH, 60HZ, 182

Class - None

Division - Not Applicable

Copyright © All product information within this document is subject to ABB Motors and Mechanical Inc. copyright © protection, unless otherwise noted.

4/12/2026 6:37:01 AM

Specifications

Enclosure	TEFC
Frame	182TC
Frame Material	Steel
Frequency	60.00 Hz
Haz Area Class and Group	None
Haz Area Division	Not Applicable
Motor Letter Type	Three Phase
Output @ Frequency	3.000 HP @ 60 HZ
Phase	3
Synchronous Speed @ Frequency	1800 RPM @ 60 HZ
Voltage @ Frequency	460.0 V @ 60 HZ 230.0 V @ 60 HZ
Agency Approvals	CE CURUSEEV NEMA PREMIUM UKCA WEEE
Ambient Temperature	40 °C
Auxiliary Box	NO AUXILLARY BOX
Auxiliary Box Lead Termination	None
Base Indicator	No Mounting
Bearing Grease Type	Polyrex EM (-20F +300F)
Blower	None
Current @ Voltage	8.800 A @ 208.0 V 8.320 A @ 230.0 V 4.160 A @ 460.0 V
Design Code	B
Drip Cover	No Drip Cover
Duty Rating	CONT
Efficiency @ 100% Load	89.5 %
Electrically Isolated Bearing	Not Electrically Isolated
Feedback Device	NO FEEDBACK

Part detail

Revision	-
Type	AC
Mech. spec.	36Q614
Base	
Status	PRD/A
Elec. spec.	36WGZ650
Layout	36LYQ614
Eff. date	11-14-2025
CD Diagram	CD0005
Poles	04
Leads	9#16
Proprietary	False
Created date	11-07-2025

Front Shaft Indicator	None
Heater Indicator	No Heater
High Voltage Full Load Amps	4.2 a
Insulation Class	F
Inverter Code	Inverter Ready
KVA Code	K
Lifting Lugs	No Lifting Lugs
Locked Bearing Indicator	Locked Bearing
Motor Lead Quantity/Wire Size	9 @ 16 AWG
Motor Lead Termination	Flying Leads
Motor Standards	NEMA
Motor Type	3630M
Mounting Arrangement	F3
Number of Poles	4
Overall Length	19.06 IN
Power Factor	74
Product Family	General Purpose
Pulley End Bearing Type	Ball
Pulley Face Code	Standard
Pulley Shaft Indicator	Standard
Rodent Screen	None
Service Factor	1.15
Shaft Diameter	1.125 IN
Shaft Ground Indicator	No Shaft Grounding
Shaft Rotation	Reversible
Shaft Slinger Indicator	No Slinger
Speed	1764 rpm
Speed Code	Single Speed
Starting Method	Direct on line
Thermal Device - Bearing	None
Thermal Device - Winding	None
Vibration Sensor Indicator	No Vibration Sensor
Winding Thermal 1	None
Winding Thermal 2	None

Nameplate

NP2934L							
CAT.NO.	VEBM3611T-S						
SPEC.	36Q614Z650G1						
HP	3/2.2KW 38KG IP44						
VOLTS	230/460 IC411						
AMP	8.32/4.16 BRK 15 FT-LB						
R.P.M. (1/MIN)	1764						
FRAME	182TC	HZ	60	PH	3		
SER.F.	1.15	CODE	K	DES	B	CL	F
NEMA-NOM-EFF	89.5	PF	74				
RATING	40C AMB-S1 CONT						
CC	010A						
DE	6206	ODE	6206				
ENCL	TEFC	SN					
	IE3-89.6(75%)87.8(50%)						

AC Induction Motor Performance Data

Record # 115759

Typical performance - not guaranteed values

Winding: 36WGZ650-R001		Type: 3630M		Enclosure: TEFC	
Nameplate Data			460 V, 60 Hz: High Voltage Connection		
Rated Output (HP)		3	Full Load Torque		8.942 LB-FT
Volts		230/460	Start Configuration		direct on line
Full Load Amps		8.32/4.16	Breakdown Torque		38.2 LB-FT
R.P.M.		1764	Pull-up Torque		19.1 LB-FT
Hz	60 Phase	3	Locked-rotor Torque		22.4 LB-FT
NEMA Design Code	B	KVA Code K	Starting Current		32.2 A
Service Factor (S.F.)		1.15	No-load Current		2.38 A
NEMA Nom. Eff.	89.5	Power Factor 74	Line-line Res. @ 25°C		3.8717 Ω
Rating - Duty		40C AMB-CONT	Temp. Rise @ Rated Load		46°C
S.F. Amps		9.28/4.64	Temp. Rise @ S.F. Load		56°C
			Locked-rotor Power Factor		42.6

Load Characteristics 460 V, 60 Hz, 3 HP

% of Rated Load	25	50	75	100	125	150	S.F.
Power Factor	33	54	67	74	79	81	77
Efficiency	82.2	88.4	89.8	89.8	89	87.9	89.3
Speed	1790.7	1781.4	1771.4	1761.2	1749.9	1738.7	1754
Line amperes	2.54	2.94	3.51	4.2	4.99	5.87	4.67

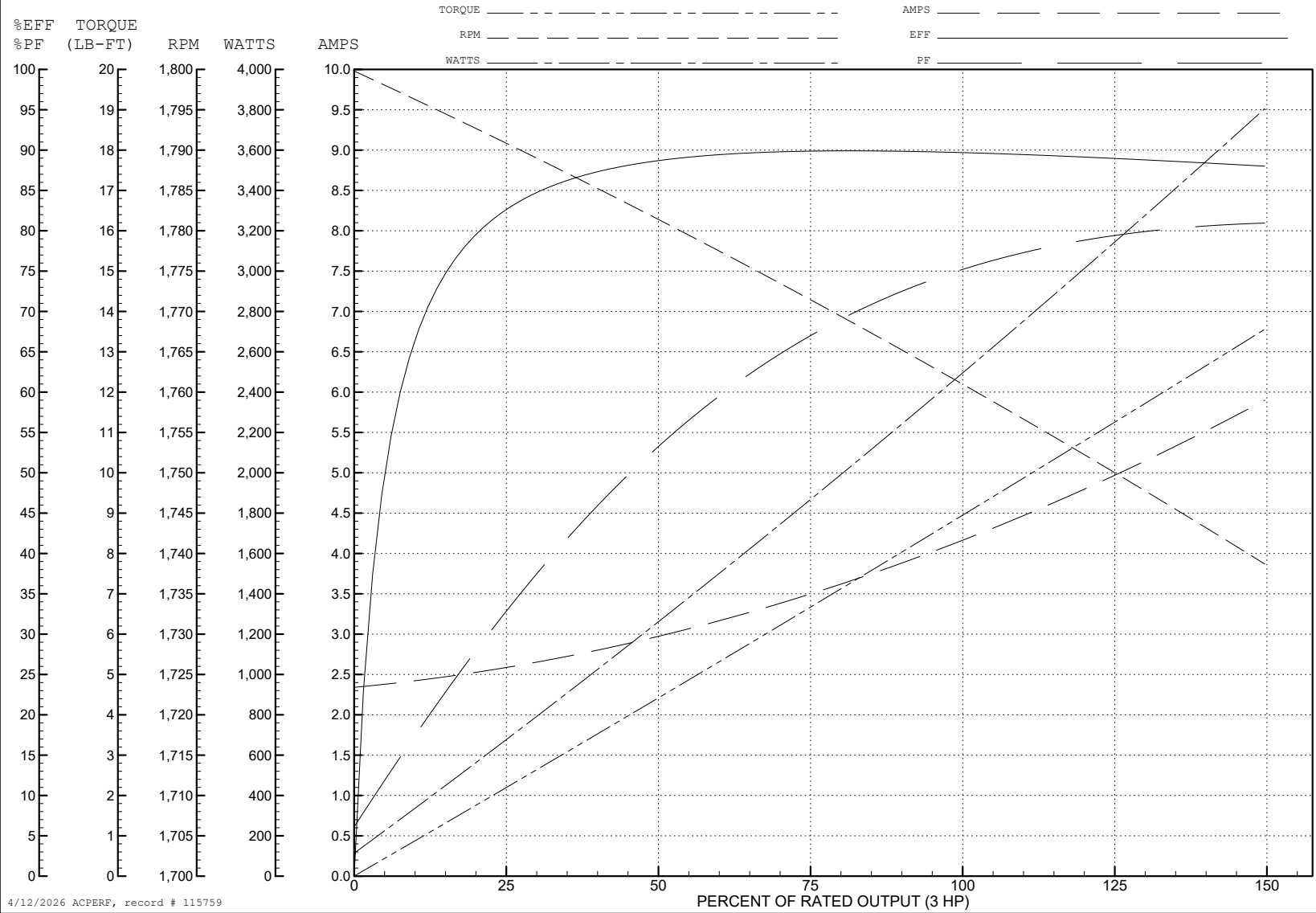
ABB Motors and Mechanical Inc.

WINDING # 36WGZ650

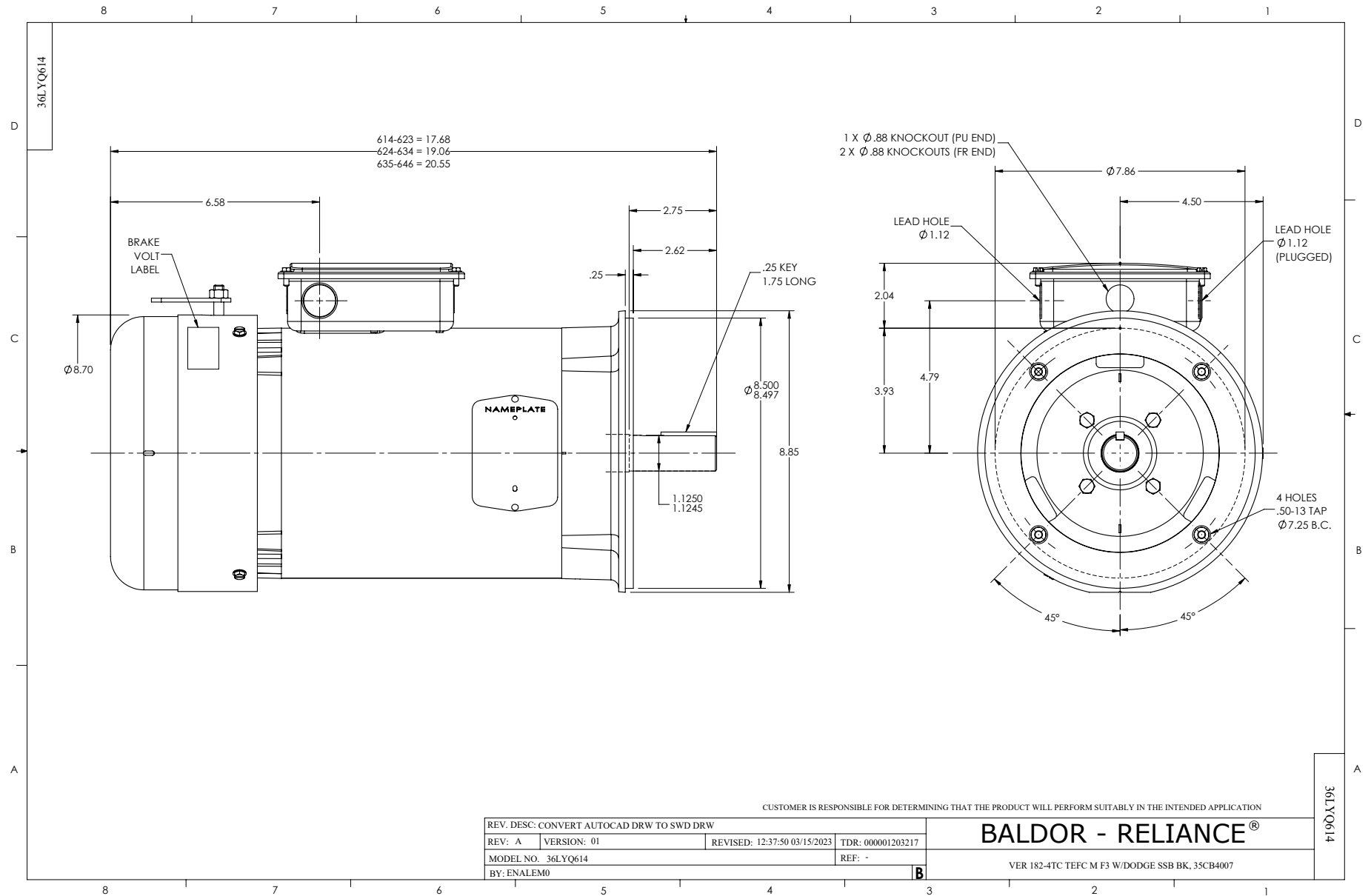
3 HP 3 PH 60 HZ 1764 RPM 460 V 3630M

Typical performance - not guaranteed values.

TORQUES (LB-FT): PO=38.2 PU=19.1 LR=22.4 LRA=32.2



4/12/2026 ACPERF, record # 115759



CD0005

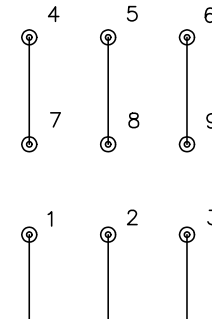


LOW VOLTAGE
(2Y)



LINE

HIGH VOLTAGE
(1Y)



LINE

NOTES:

1. INTERCHANGE ANY TWO LINE LEADS TO REVERSE ROTATION.
2. OPTIONAL THERMOSTATS ARE PROVIDED WHEN SPECIFIED.
3. ACTUAL NUMBER OF INTERNAL PARALLEL CIRCUITS MAY BE A MULTIPLE OF THOSE SHOWN ABOVE.
4. LEAD COLORS ARE OPTIONAL. LEADS MUST ALWAYS BE NUMBERED AS SHOWN.

CD0005

REV. DESC: REVISE TO SHOW OPTIONAL COLORS			
REV. LTR: E	BY: JLP	REVISED: 01/19/99 10:15	TDR: 0171435
S00000		FILE: AAA00005140	MDL: -
		MTL: -	

BALDOR ELECTRIC Co.

3PH, DV, 9 LEADS