



Customer information packet

VDM3542

.75HP, 1725RPM, 3PH, 60HZ, 56C, 3428M, TEFC, F1

Class - None

Division - Not Applicable

Specifications

Enclosure	TEFC
Frame	56C
Frame Material	Steel
Frequency	60.00 Hz
Haz Area Class and Group	None
Haz Area Division	Not Applicable
Motor Letter Type	Three Phase
Output @ Frequency	.750 HP @ 60 HZ
Phase	3
Synchronous Speed @ Frequency	1800 RPM @ 60 HZ
Voltage @ Frequency	230.0 V @ 60 HZ 460.0 V @ 60 HZ
Agency Approvals	UR CCSA US
Ambient Temperature	40 °C
Auxillary Box	No Auxillary Box
Auxillary Box Lead Termination	None
Base Indicator	No Mounting
Bearing Grease Type	Polyrex EM (-20F +300F)
Blower	None
Constant Torque Speed Range	6
Current @ Voltage	1.400 A @ 460.0 V 2.800 A @ 230.0 V
Design Code	B
Drip Cover	No Drip Cover
Duty Rating	CONT
Efficiency @ 100% Load	74.0 %
Electrically Isolated Bearing	Not Electrically Isolated
Feedback Device	NO FEEDBACK
Front Face Code	Standard
Front Shaft Indicator	None
Heater Indicator	No Heater

Part detail

Revision	N
Type	AC
Mech. spec.	34M808
Base	
Status	PRD/A
Elec. spec.	34WGR422
Layout	34LYM808
Eff. date	10-27-2022
CD Diagram	CD0005
Poles	04
Leads	9#18
Proprietary	False
Created date	04-18-2016

High Voltage Full Load Amps	1.4 a
Insulation Class	F
Inverter Code	Not Inverter
KVA Code	N
Lifting Lugs	No Lifting Lugs
Locked Bearing Indicator	Locked Bearing
Max Speed	2700 rpm
Motor Lead Exit	Ko Box
Motor Lead Quantity/Wire Size	9 @ 18 AWG
Motor Lead Termination	Flying Leads
Motor Standards	NEMA
Motor Type	3428M
Mounting Arrangement	F1
Number of Poles	4
Overall Length	12.85 IN
Power Factor	68
Product Family	Dirty Duty Plus
Pulley End Bearing Type	Sealed Bearing
Pulley Face Code	C-Face
Pulley Shaft Indicator	Standard
Rodent Screen	None
RoHS Status	ROHS COMPLIANT
Service Factor	1.25
Shaft Diameter	0.625 IN
Shaft Extension Location	Pulley End
Shaft Ground Indicator	No Shaft Grounding
Shaft Rotation	Reversible
Shaft Slinger Indicator	No Slinger
Speed	1725 rpm
Speed Code	Single Speed
Starting Method	Direct on line
Thermal Device - Bearing	None
Thermal Device - Winding	None
Vibration Sensor Indicator	No Vibration Sensor

Winding Thermal 1

None

Winding Thermal 2

None

Nameplate

NP3659	
CAT.NO.	VDM3542
SPEC.	34M808R422G1 ENCL TEFC
FRAME	56C H.P. .75
VOLTS	230/460
AMPS	2.8/1.4 IP 56
R.P.M.	1725
HZ.	60 PH. 3 CLASS F
SER.F.	1.25 DES. B CC
NEMA NOM. EFF.	74
RATING	40C AMB-CONT
DE	6203 ODE 6203
GREASE	POLYREX EM
SN	
	50C AT 1.0 SF
	SFA 3.2/1.6

AC Induction Motor Performance Data

Record # 58333

Typical performance - not guaranteed values

Winding: 34WGR422-R001		Type: 3428M		Enclosure: TEFC	
Nameplate Data			460 V, 60 Hz: High Voltage Connection		
Rated Output (HP)	.75	Full Load Torque	2.28 LB-FT		
Volts	230/460	Start Configuration	direct on line		
Full Load Amps	2.8/1.4	Breakdown Torque	10 LB-FT		
R.P.M.	1725	Pull-up Torque	7.67 LB-FT		
Hz	60	Locked-rotor Torque	11.8 LB-FT		
NEMA Design Code	B	Starting Current	11.1 A		
Service Factor (S.F.)	1.25	No-load Current	1.04 A		
NEMA Nom. Eff.	74	Line-line Res. @ 25°C	17.999 Ω		
Rating - Duty	40C AMB-CONT	Temp. Rise @ Rated Load	60°C		
S.F. Amps	3.2/1.6	Temp. Rise @ S.F. Load	70°C		
		Locked-rotor Power Factor	55.7		

Load Characteristics 460 V, 60 Hz, 0.75 HP

% of Rated Load	25	50	75	100	125	150	S.F.
Power Factor	33	48	60	68	75	79	75
Efficiency	50.2	65.5	71.3	74.1	75.2	75	75.2
Speed	1783.6	1770.3	1757	1742.7	1726.6	1709.9	1727
Line amperes	1.07	1.15	1.25	1.39	1.57	1.76	1.57

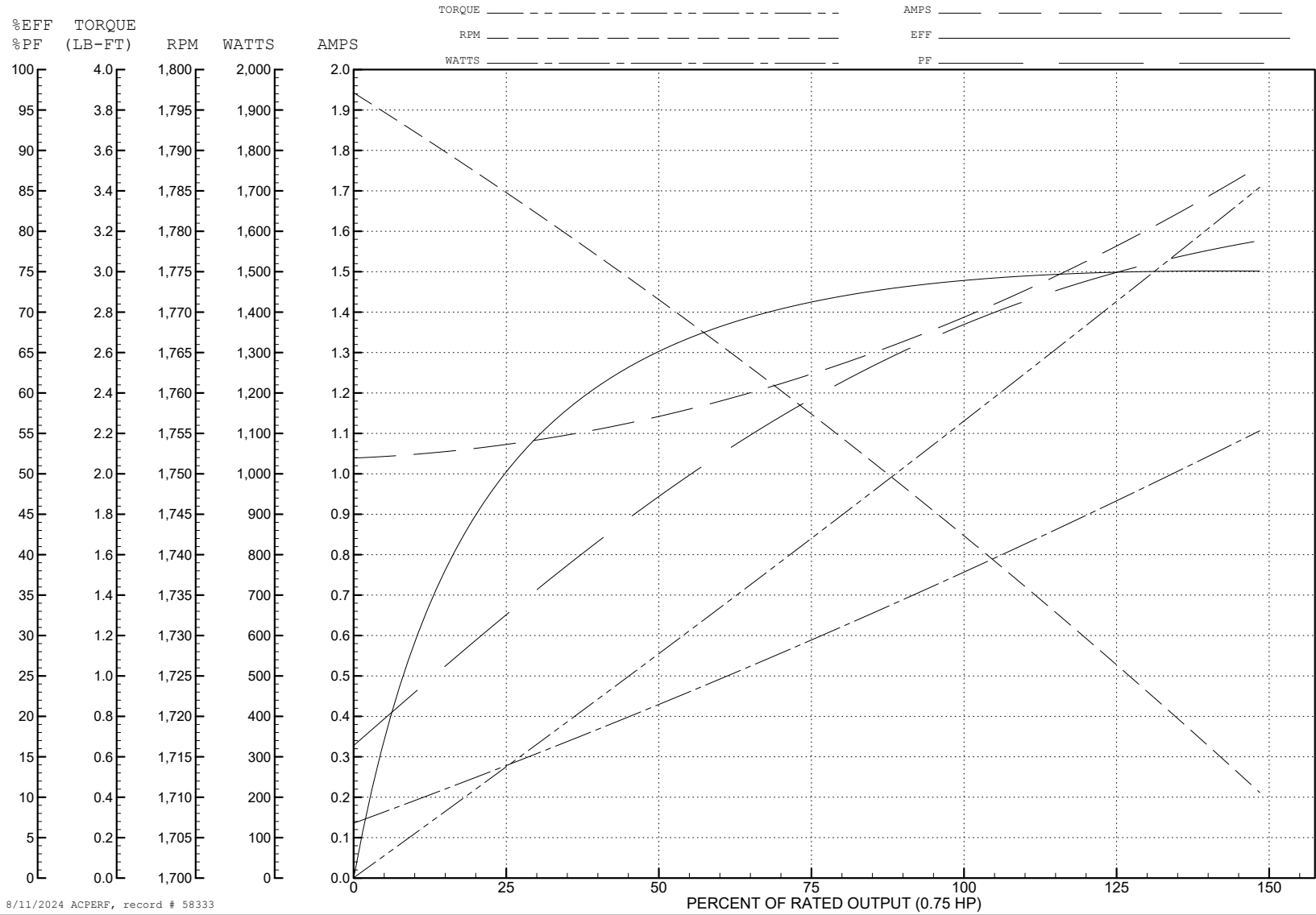
ABB Motors and Mechanical Inc.

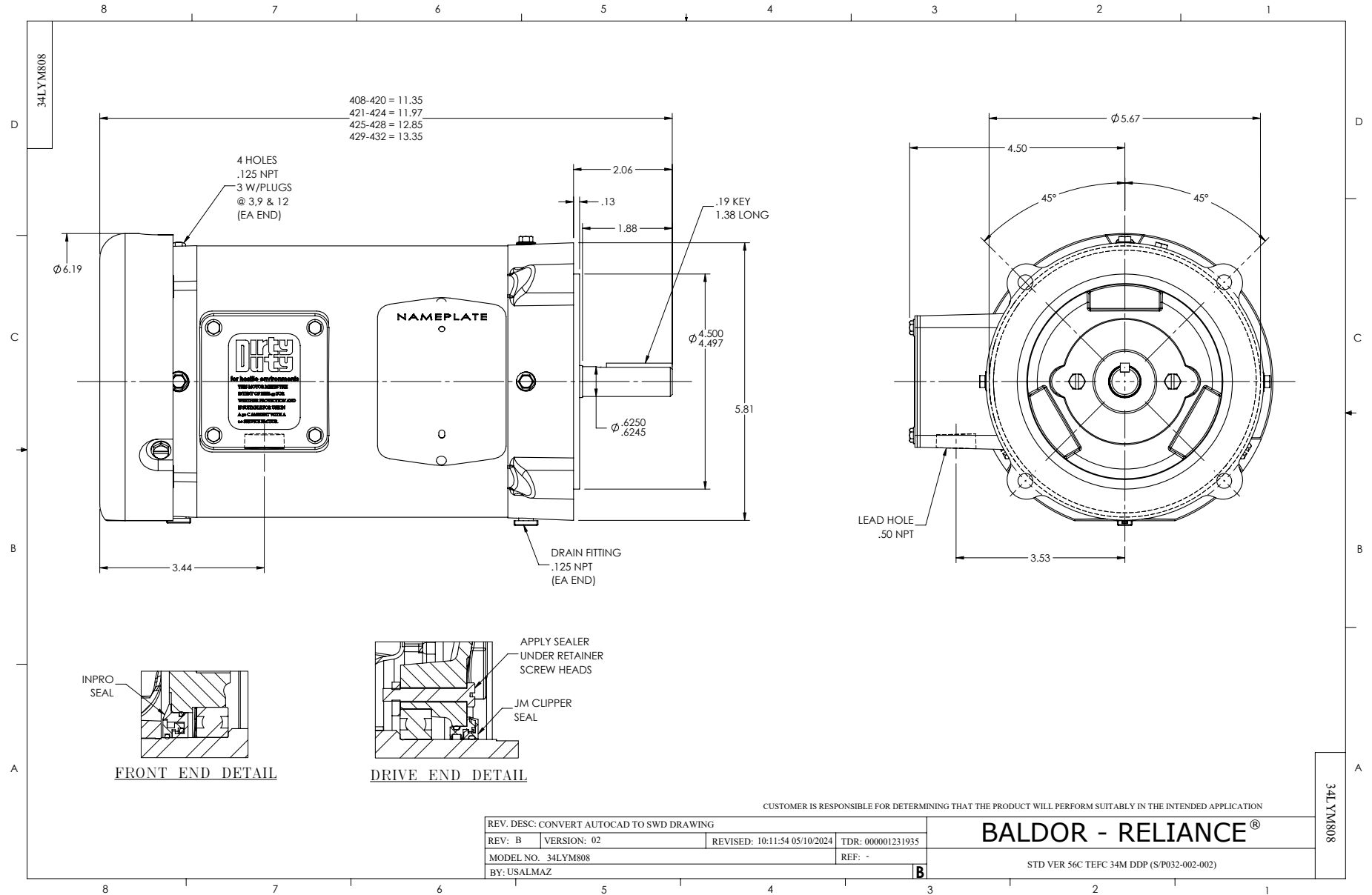
WINDING # 34WGR422

0.75 HP 3 PH 60 HZ 1725 RPM 460 V 3428M

Typical performance - not guaranteed values.

TORQUES (LB-FT): PO=10 PU=7.67 LR=11.8 LRA=11.1





CD0005

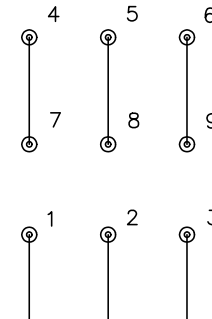


LOW VOLTAGE
(2Y)



LINE

HIGH VOLTAGE
(1Y)



LINE

NOTES:

1. INTERCHANGE ANY TWO LINE LEADS TO REVERSE ROTATION.
2. OPTIONAL THERMOSTATS ARE PROVIDED WHEN SPECIFIED.
3. ACTUAL NUMBER OF INTERNAL PARALLEL CIRCUITS MAY BE A MULTIPLE OF THOSE SHOWN ABOVE.
4. LEAD COLORS ARE OPTIONAL. LEADS MUST ALWAYS BE NUMBERED AS SHOWN.

CD0005

REV. DESC: REVISE TO SHOW OPTIONAL COLORS			
REV. LTR: E	BY: JLP	REVISED: 01/19/99 10:15	TDR: 0171435
S00000		FILE: AAA00005140	MDL: -
		MTL: -	

BALDOR ELECTRIC Co.

3PH, DV, 9 LEADS