



---

# Customer information packet

## VDM3541

.75HP, 3450RPM, 3PH, 60HZ, 56C, 3418M, TEFC, F1

Class - None

Division - Not Applicable

## Specifications

Enclosure	TEFC
Frame	56C
Frame Material	Steel
Frequency	60.00 Hz
Haz Area Class and Group	None
Haz Area Division	Not Applicable
Motor Letter Type	Three Phase
Output @ Frequency	.750 HP @ 60 HZ
Phase	3
Synchronous Speed @ Frequency	3600 RPM @ 60 HZ
Voltage @ Frequency	460.0 V @ 60 HZ 230.0 V @ 60 HZ
Agency Approvals	CCSA US UR
Ambient Temperature	40 °C
Auxillary Box	No Auxillary Box
Auxillary Box Lead Termination	None
Base Indicator	No Mounting
Bearing Grease Type	Polyrex EM (-20F +300F)
Blower	None
Constant Torque Speed Range	6
Current @ Voltage	2.300 A @ 208.0 V 2.400 A @ 230.0 V 1.200 A @ 460.0 V
Design Code	B
Drip Cover	No Drip Cover
Duty Rating	CONT
Efficiency @ 100% Load	72.0 %
Electrically Isolated Bearing	Not Electrically Isolated
Feedback Device	NO FEEDBACK
Front Face Code	Standard
Front Shaft Indicator	None

## Part detail

Revision	L
Type	AC
Mech. spec.	34M809
Base	
Status	PRD/A
Elec. spec.	34WGR420
Layout	34LYM809
Eff. date	11-07-2022
CD Diagram	CD0005
Poles	02
Leads	9#18
Proprietary	False
Created date	04-20-2016

Heater Indicator	No Heater
High Voltage Full Load Amps	1.2 a
Insulation Class	F
Inverter Code	Not Inverter
KVA Code	N
Lifting Lugs	No Lifting Lugs
Locked Bearing Indicator	Locked Bearing
Max Speed	5400 rpm
Motor Lead Exit	Ko Box
Motor Lead Quantity/Wire Size	9 @ 18 AWG
Motor Lead Termination	Flying Leads
Motor Standards	NEMA
Motor Type	3418M
Mounting Arrangement	F1
Number of Poles	2
Overall Length	11.35 IN
Power Factor	82
Product Family	Dirty Duty Plus
Pulley End Bearing Type	Sealed Bearing
Pulley Face Code	C-Face
Pulley Shaft Indicator	Standard
Rodent Screen	None
RoHS Status	ROHS COMPLIANT
Service Factor	1.25
Shaft Diameter	0.625 IN
Shaft Extension Location	Pulley End
Shaft Ground Indicator	No Shaft Grounding
Shaft Rotation	Reversible
Shaft Slinger Indicator	No Slinger
Speed	3450 rpm
Speed Code	Single Speed
Starting Method	Direct on line
Thermal Device - Bearing	None
Thermal Device - Winding	None

<b>Vibration Sensor Indicator</b>	<b>No Vibration Sensor</b>
<b>Winding Thermal 1</b>	None
<b>Winding Thermal 2</b>	None

**Nameplate**

<b>NP3659</b>	
<b>CAT.NO.</b>	VDM3541
<b>SPEC.</b>	34M809R420G1 <b>ENCL</b> TEFC
<b>FRAME</b>	56C <b>H.P.</b> .75
<b>VOLTS</b>	230/460
<b>AMPS</b>	2.4/1.2 <b>IP</b> 56
<b>R.P.M.</b>	3450
<b>HZ.</b>	60 <b>PH.</b> 3 <b>CLASS</b> F
<b>SER.F.</b>	1.25 <b>DES.</b> B CC
<b>NEMA NOM. EFF.</b>	72
<b>RATING</b>	40C AMB-CONT
<b>DE</b>	6203 <b>ODE</b> 6203
<b>GREASE</b>	POLYREX EM
<b>SN</b>	
	50C AT 1.0SF
	SFA 2.6/1.3

**AC Induction Motor Performance Data**

Record # 58278

Typical performance - not guaranteed values

<b>Winding: 34WGR420-R001</b>		<b>Type: 3418M</b>		<b>Enclosure: TEFC</b>	
<b>Nameplate Data</b>			<b>460 V, 60 Hz: High Voltage Connection</b>		
<b>Rated Output (HP)</b>	.75	<b>Full Load Torque</b>	1.12 LB-FT		
<b>Volts</b>	230/460	<b>Start Configuration</b>	direct on line		
<b>Full Load Amps</b>	2.4/1.2	<b>Breakdown Torque</b>	5.83 LB-FT		
<b>R.P.M.</b>	3450	<b>Pull-up Torque</b>	3.59 LB-FT		
<b>Hz</b>	60	<b>Locked-rotor Torque</b>	4.67 LB-FT		
<b>NEMA Design Code</b>	B	<b>Starting Current</b>	10.8 A		
<b>Service Factor (S.F.)</b>	1.25	<b>No-load Current</b>	0.677 A		
<b>NEMA Nom. Eff.</b>	72	<b>Line-line Res. @ 25°C</b>	18.374 Ω		
<b>Rating - Duty</b>	40C	<b>Temp. Rise @ Rated Load</b>	56°C		
<b>S.F. Amps</b>	2.6/1.3	<b>Temp. Rise @ S.F. Load</b>	66°C		
		<b>Locked-rotor Power Factor</b>	66.1		

**Load Characteristics 460 V, 60 Hz, 0.75 HP**

<b>% of Rated Load</b>	<b>25</b>	<b>50</b>	<b>75</b>	<b>100</b>	<b>125</b>	<b>150</b>	<b>S.F.</b>
<b>Power Factor</b>	49	65	75	82	86	88	86
<b>Efficiency</b>	48.6	63	70.2	73.5	74.9	75.5	74.9
<b>Speed</b>	3538.5	3516.3	3493.4	3458	3443.1	3417.1	3443
<b>Line amperes</b>	0.755	0.871	1.01	1.154	1.36	1.55	1.36

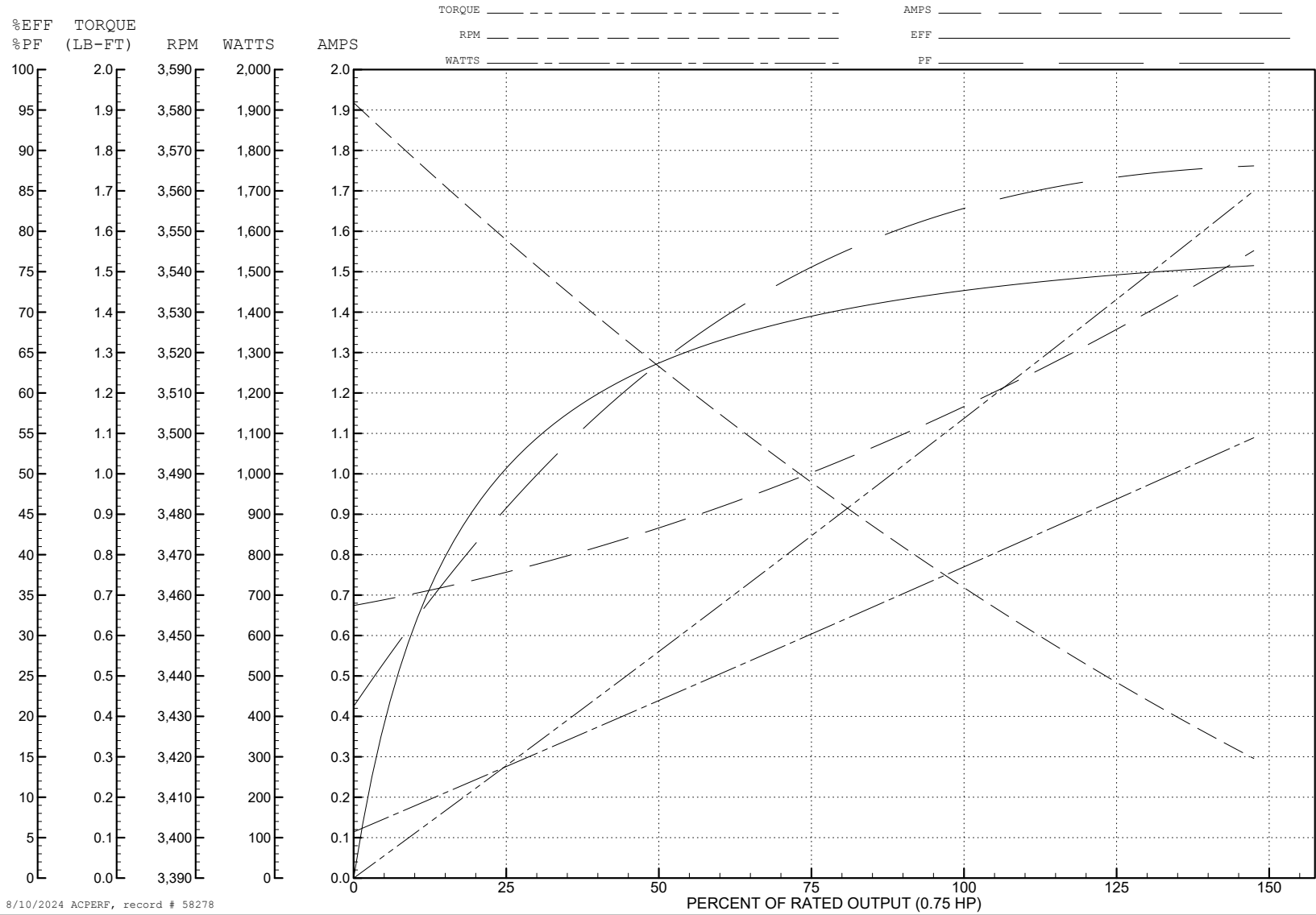
ABB Motors and Mechanical Inc.

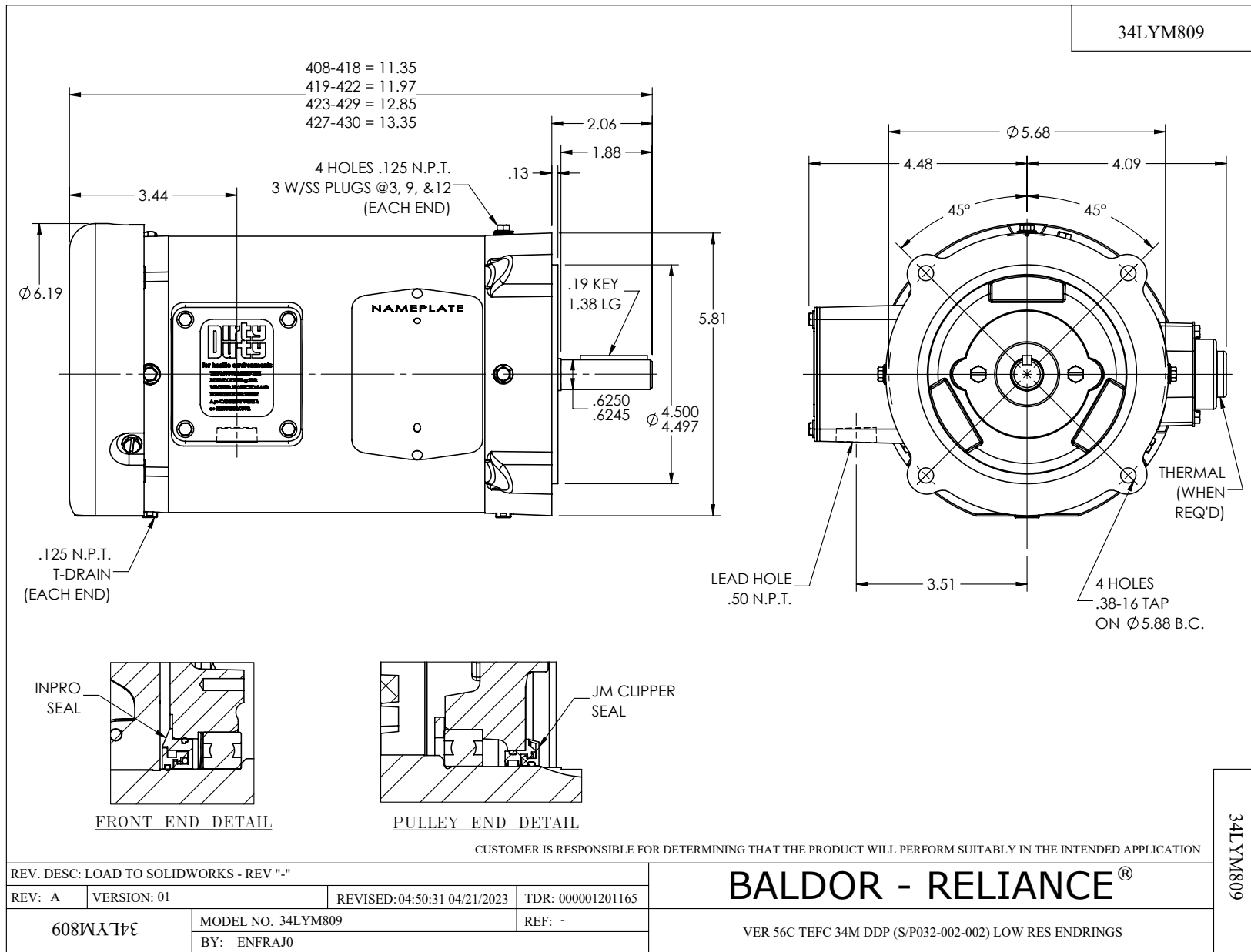
WINDING # 34WGR420

Typical performance - not guaranteed values.

0.75 HP 3 PH 60 HZ 3450 RPM 460 V 3418M

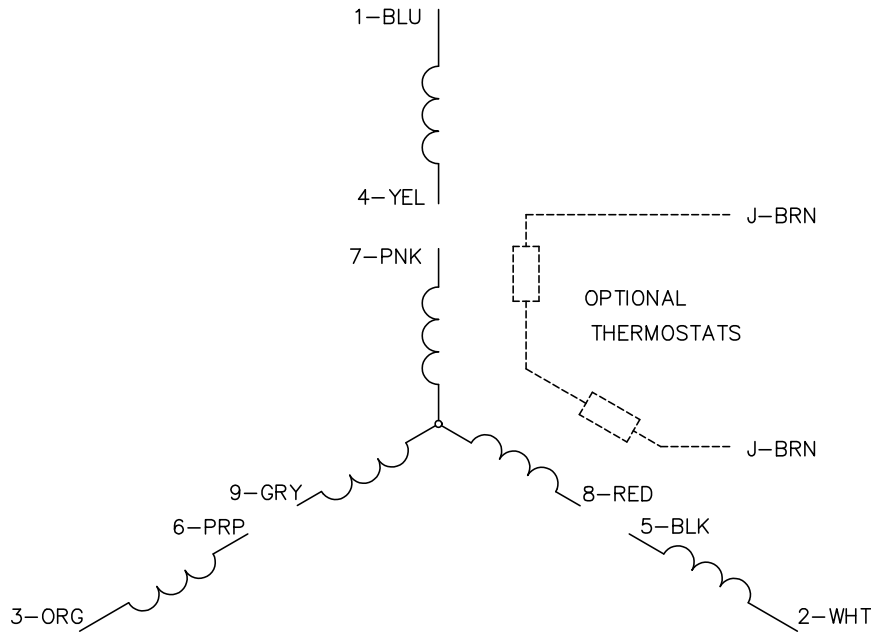
TORQUES (LB-FT): PO=5.83 PU=3.59 LR=4.67 LRA=10.8



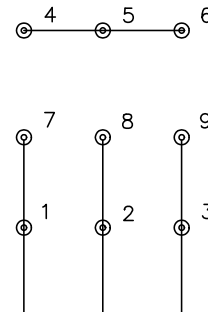




CD0005

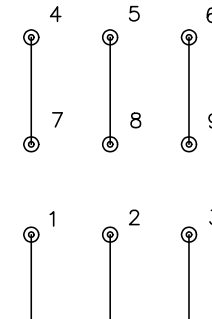


LOW VOLTAGE  
(2Y)



LINE

HIGH VOLTAGE  
(1Y)



LINE

NOTES:

1. INTERCHANGE ANY TWO LINE LEADS TO REVERSE ROTATION.
2. OPTIONAL THERMOSTATS ARE PROVIDED WHEN SPECIFIED.
3. ACTUAL NUMBER OF INTERNAL PARALLEL CIRCUITS MAY BE A MULTIPLE OF THOSE SHOWN ABOVE.
4. LEAD COLORS ARE OPTIONAL. LEADS MUST ALWAYS BE NUMBERED AS SHOWN.

CD0005

REV. DESC: REVISE TO SHOW OPTIONAL COLORS			
REV. LTR: E	BY: JLP	REVISED: 01/19/99 10:15	TDR: 0171435
S00000		FILE: AAA00005140	MDL: -
		MTL: -	

**BALDOR ELECTRIC Co.**

3PH, DV, 9 LEADS