

ABB BALDOR RELIANCE III

Customer information packet

VDM3537

.5HP, 3450RPM, 3PH, 60HZ, 56C, 3414M, TEFC, F1

Class - None

Division - Not Applicable

Specifications

Enclosure	TEFC
Frame	56C
Frame Material	Steel
Frequency	60.00 Hz
Haz Area Class and Group	None
Haz Area Division	Not Applicable
Motor Letter Type	Three Phase
Output @ Frequency	.500 HP @ 60 HZ
Phase	3
Synchronous Speed @ Frequency	3600 RPM @ 60 HZ
Voltage @ Frequency	460.0 V @ 60 HZ 230.0 V @ 60 HZ
Agency Approvals	CCSA US UR
Ambient Temperature	40 °C
Auxiliary Box	NO AUXILLARY BOX
Auxiliary Box Lead Termination	None
Base Indicator	No Mounting
Bearing Grease Type	Polyrex EM (-20F +300F)
Blower	None
Constant Torque Speed Range	6
Current @ Voltage	1.700 A @ 208.0 V 1.800 A @ 230.0 V .900 A @ 460.0 V
Design Code	B
Drip Cover	No Drip Cover
Duty Rating	CONT
Efficiency @ 100% Load	68.0 %
Electrically Isolated Bearing	Not Electrically Isolated
Feedback Device	NO FEEDBACK
Front Face Code	Standard
Front Shaft Indicator	None

Part Detail

Revision	M
Type	AC
Mech. spec.	34M809
Base	
Status	PRD/A
Elec. spec.	34WGR421
Layout	34LYM809
Eff. date	03-02-2026
CD Diagram	CD0005
Poles	02
Leads	9#18
Proprietary	False
Created date	04-19-2016

Heater Indicator	No Heater
High Voltage Full Load Amps	0.9 a
Insulation Class	F
Inverter Code	Not Inverter
KVA Code	P
Lifting Lugs	No Lifting Lugs
Locked Bearing Indicator	Locked Bearing
Max Speed	5400 rpm
Motor Lead Exit	Ko Box
Motor Lead Quantity/Wire Size	9 @ 18 AWG
Motor Lead Termination	Flying Leads
Motor Standards	NEMA
Motor Type	3414M
Mounting Arrangement	F1
Number of Poles	2
Overall Length	11.35 IN
Power Factor	75
Product Family	Dirty Duty Plus
Pulley End Bearing Type	Sealed Bearing
Pulley Face Code	C-Face
Pulley Shaft Indicator	Standard
Rodent Screen	None
RoHS Status	ROHS COMPLIANT
Service Factor	1.25
Shaft Diameter	0.625 IN
Shaft Extension Location	Pulley End
Shaft Ground Indicator	No Shaft Grounding
Shaft Rotation	Reversible
Shaft Slinger Indicator	No Slinger
Speed	3450 rpm
Speed Code	Single Speed
Starting Method	Direct on line
Thermal Device - Bearing	None
Thermal Device - Winding	None

Vibration Sensor Indicator

No Vibration Sensor

Winding Thermal 1

None

Winding Thermal 2

None

Nameplate

NP3659	
CAT.NO.	VDM3537
SPEC.	34M809R421G1 ENCL TEFC
FRAME	56C H.P. .5
VOLTS	230/460
AMPS	1.8/.9 IP 56
R.P.M.	3450
HZ.	60 PH. 3 CLASS F
SER.F.	1.25 DES. B CC
NEMA NOM. EFF.	68
RATING	40C AMB-CONT
DE	6203 ODE 6203
GREASE	POLYREX EM
SN	50C AT 1.0SF SFA 2/1

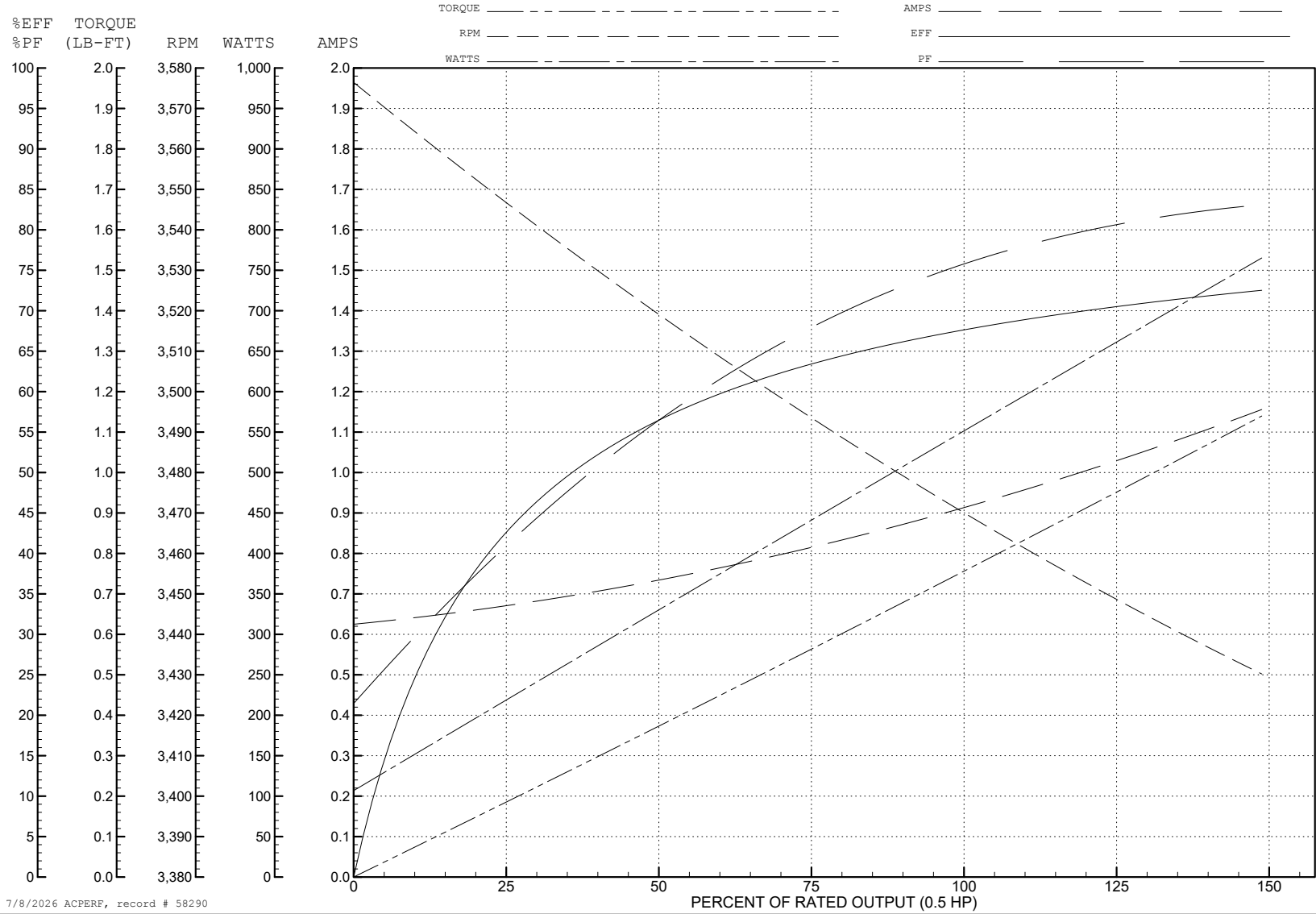
ABB Motors and Mechanical Inc.

WINDING # 34WGR421

0.5 HP 3 PH 60 HZ 3450 RPM 460 V 3414M

Typical performance - not guaranteed values.

TORQUES (LB-FT): PO=4.6 PU=3.07 LR=3.86 LRA=8.39



7/8/2026 ACPERF, record # 58290

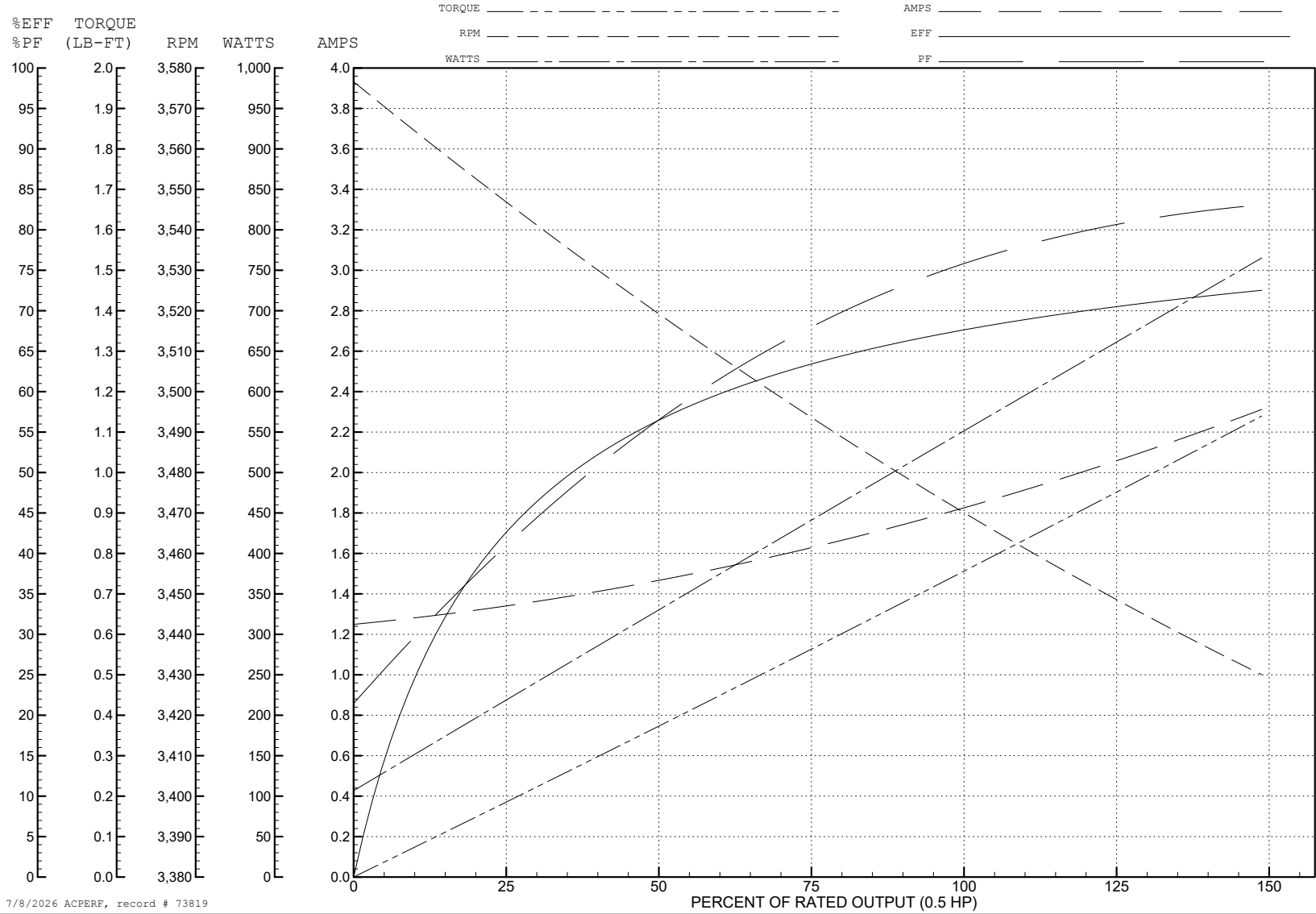
ABB Motors and Mechanical Inc.

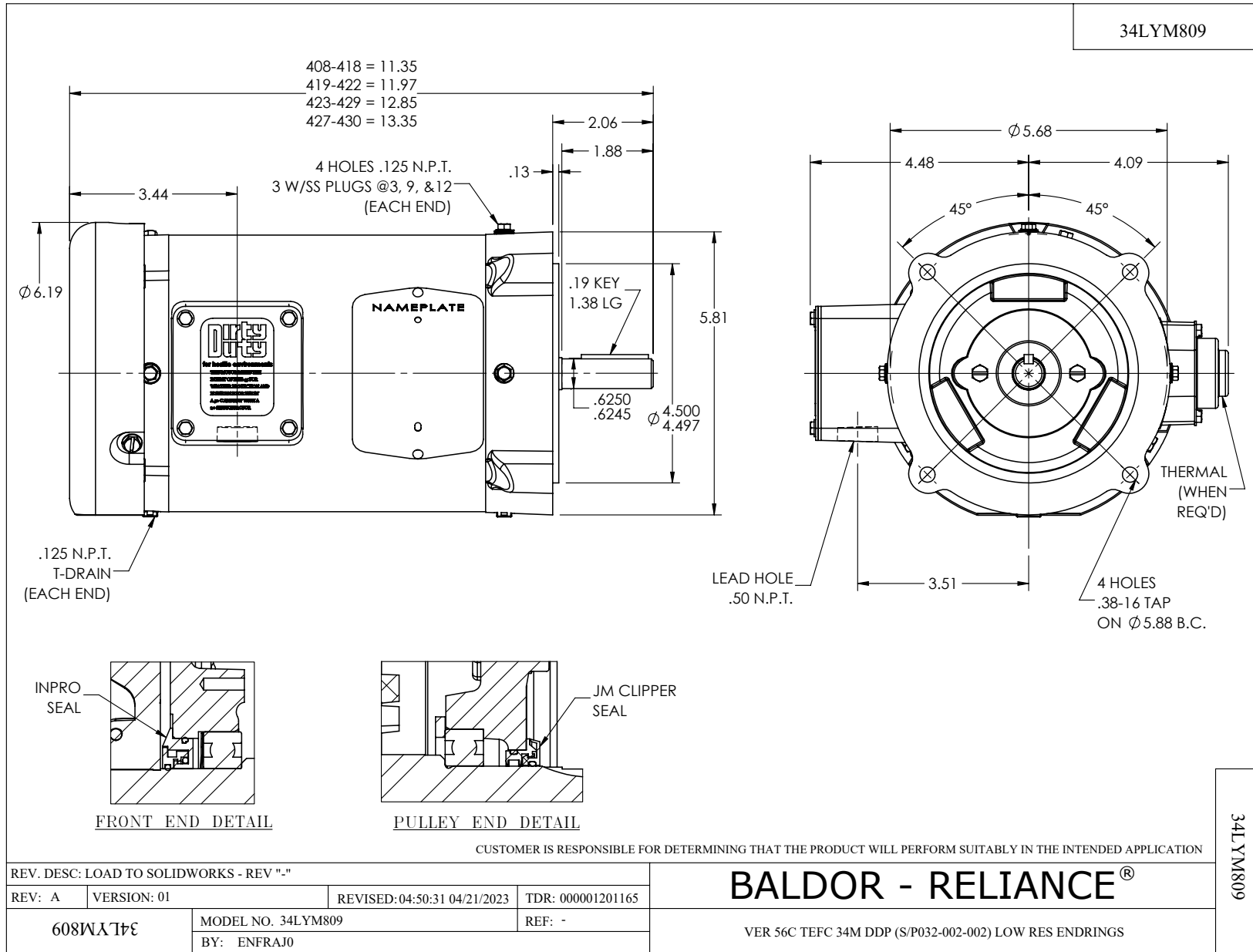
WINDING # 34WGR421

0.5 HP 3 PH 60 HZ 3450 RPM 230 V 3414M

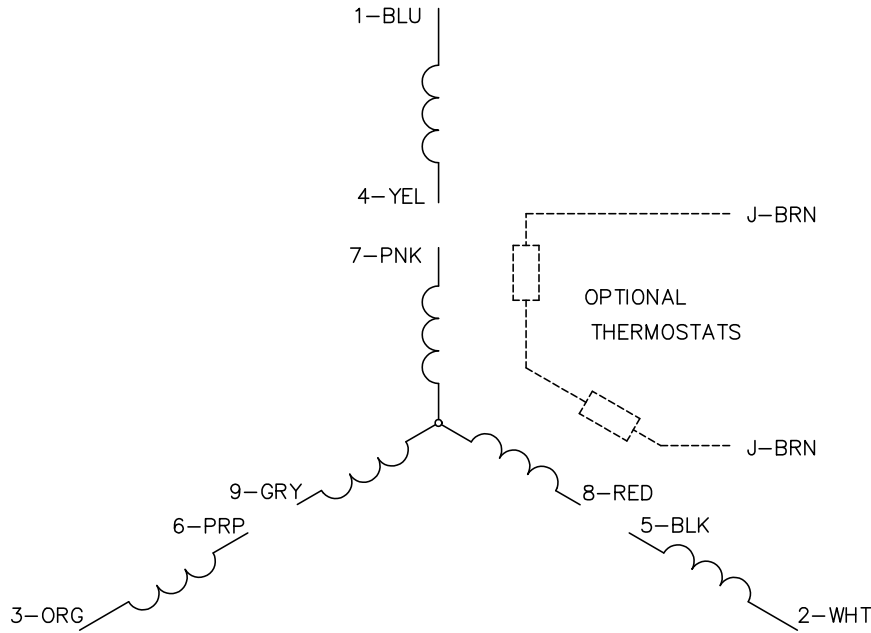
Typical performance - not guaranteed values.

TORQUES (LB-FT): PO=4.6 PU=3.07 LR=3.86 LRA=16.78

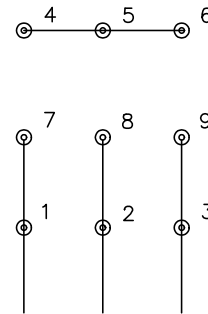




CD0005



LOW VOLTAGE
(2Y)



LINE

HIGH VOLTAGE
(1Y)



LINE

NOTES:

1. INTERCHANGE ANY TWO LINE LEADS TO REVERSE ROTATION.
2. OPTIONAL THERMOSTATS ARE PROVIDED WHEN SPECIFIED.
3. ACTUAL NUMBER OF INTERNAL PARALLEL CIRCUITS MAY BE A MULTIPLE OF THOSE SHOWN ABOVE.
4. LEAD COLORS ARE OPTIONAL. LEADS MUST ALWAYS BE NUMBERED AS SHOWN.

REV. DESC: REVISE TO SHOW OPTIONAL COLORS			
REV. LTR: E	BY: JLP	REVISED: 01/19/99 10:15	TDR: 0171435
S00000		FILE: AAA00005140	MDL: -
		MTL: -	

BALDOR ELECTRIC Co.

3PH, DV, 9 LEADS

CD0005