



Customer information packet

VAOM3560

.5HP, 865RPM, 3PH, 60HZ, 56C, 3522M, TEAO, F1, N

Class - None

Division - Not Applicable

Specifications

Enclosure	TEAO
Frame	56C
Frame Material	Steel
Frequency	60.00 Hz
Haz Area Class and Group	None
Haz Area Division	Not Applicable
Motor Letter Type	Three Phase
Output @ Frequency	.500 HP @ 60 HZ
Phase	3
Synchronous Speed @ Frequency	900 RPM @ 60 HZ
Voltage @ Frequency	208.0 V @ 60 HZ 230.0 V @ 60 HZ 460.0 V @ 60 HZ
Agency Approvals	CSA UR
Ambient Temperature	40 °C
Auxillary Box	No Auxillary Box
Auxillary Box Lead Termination	None
Base Indicator	No Mounting
Bearing Grease Type	Polyrex EM (-20F +300F)
Blower	None
Current @ Voltage	2.400 A @ 230.0 V 2.200 A @ 208.0 V 1.200 A @ 460.0 V
Design Code	B
Drip Cover	No Drip Cover
Duty Rating	CONT
Efficiency @ 100% Load	70.0 %
Electrically Isolated Bearing	Not Electrically Isolated
Feedback Device	NO FEEDBACK
Front Shaft Indicator	None
Heater Indicator	No Heater

Part detail

Revision	D
Type	AC
Mech. spec.	35E2256
Base	
Status	PRD/A
Elec. spec.	35WGG341
Layout	35LYE2256
Eff. date	07-31-2024
CD Diagram	CD0005
Poles	08
Leads	9#18
Proprietary	False
Created date	02-23-2023

High Voltage Full Load Amps	1.2 a
Insulation Class	B
Inverter Code	Not Inverter
KVA Code	K
Lifting Lugs	No Lifting Lugs
Locked Bearing Indicator	Locked Bearing
Motor Lead Quantity/Wire Size	9 @ 18 AWG
Motor Lead Termination	None
Motor Standards	NEMA
Motor Type	3522M
Mounting Arrangement	F1
Number of Poles	8
Overall Length	12.68 IN
Power Factor	57
Product Family	General Purpose
Pulley End Bearing Type	Sealed Bearing
Pulley Face Code	C-Face
Pulley Shaft Indicator	Standard
Rodent Screen	None
Service Factor	1.00
Shaft Diameter	0.625 IN
Shaft Ground Indicator	No Shaft Grounding
Shaft Rotation	Reversible
Shaft Slinger Indicator	No Slinger
Speed	865 rpm
Speed Code	Single Speed
Starting Method	Direct on line
Thermal Device - Bearing	None
Thermal Device - Winding	None
Vibration Sensor Indicator	No Vibration Sensor
Winding Thermal 1	None
Winding Thermal 2	None

Nameplate

NP1256L									
CAT.NO.	VAOM3560								
SPEC.	35E2256G341G1								
HP	.5								
VOLTS	208-230/460								
AMP	2.2-2.4/1.2								
RPM	865								
FRAME	56C		HZ	60		PH	3		
SER.F.	1.00	CODE	K	DES	B	CLASS	B		
NEMA-NOM-EFF	70	PF	57						
RATING	40C AMB-CONT								
CC									
DE	6205		ODE	6203					
ENCL	TEAO	SN							

AC Induction Motor Performance Data

Record # 87788

Preliminary Data Sheet

Winding: 35WGG341-R003		Type: 3522M		Enclosure: TEAO	
Nameplate Data			460 V, 60 Hz: High Voltage Connection		
Rated Output (HP)	.5	Full Load Torque	3.08 LB-FT		
Volts	208-230/460	Start Configuration	direct on line		
Full Load Amps	2.2-2.4/1.2	Breakdown Torque	10.33 LB-FT		
R.P.M.	865	Pull-up Torque	6.41 LB-FT		
Hz	60	Locked-rotor Torque	7.03 LB-FT		
NEMA Design Code	B	Starting Current	5.49 A		
Service Factor (S.F.)	1	No-load Current	0.979 A		
NEMA Nom. Eff.	70	Line-line Res. @ 25°C	39.9 Ω		
Rating - Duty	40C AMB-CONT	Temp. Rise @ Rated Load	52°C		
		Locked-rotor Power Factor	65		
		Rotor inertia	0.159 lb-ft ²		

Load Characteristics 460 V, 60 Hz, 0.5 HP

% of Rated Load	25	50	75	100	125	150
Power Factor	25	37	47	56	64	69
Efficiency	49.7	63	68.5	70.9	70.7	69.7
Speed	893	884	876	866	853	839
Line amperes	0.986	1.02	1.1	1.19	1.3	1.46

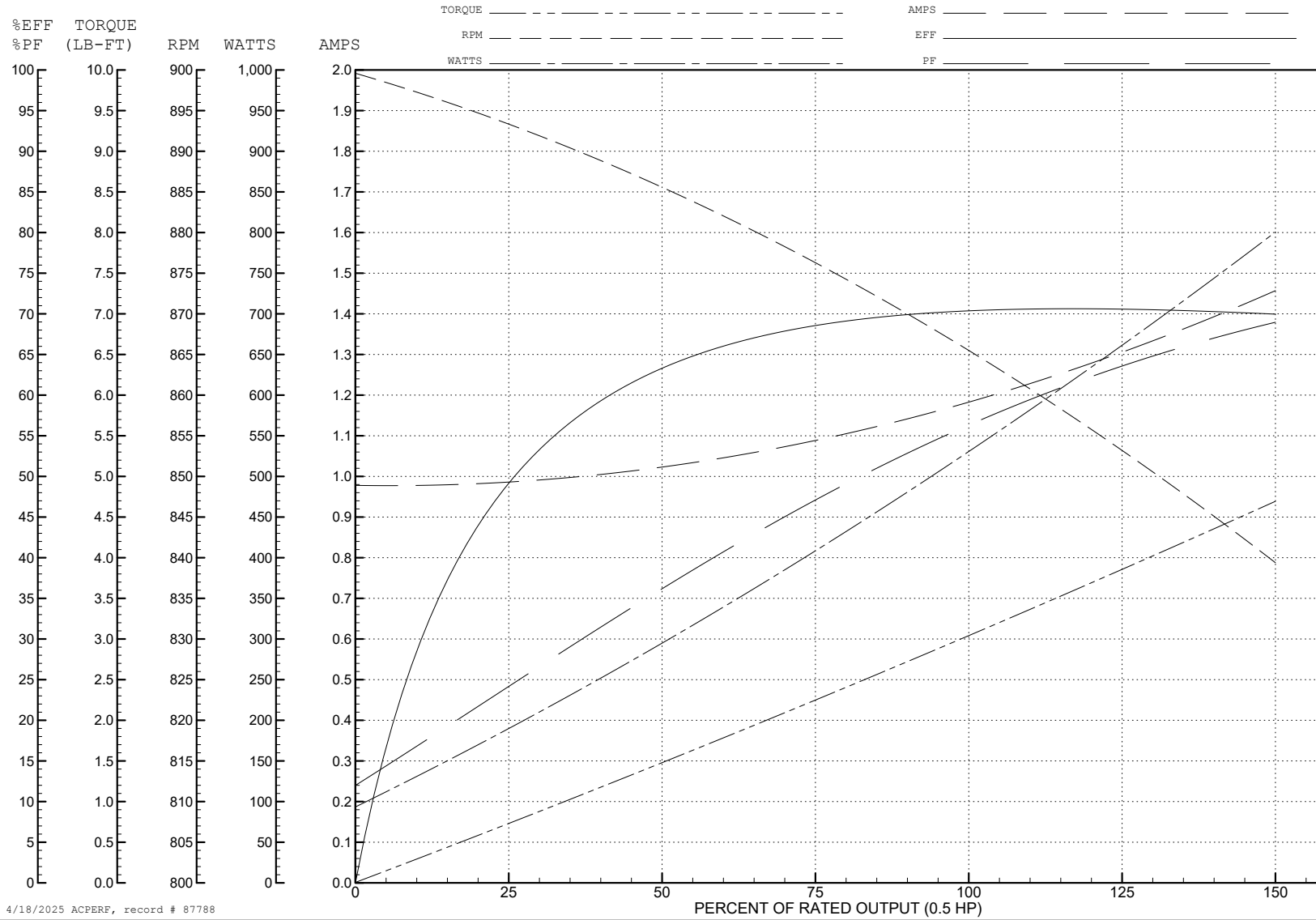
ABB Motors and Mechanical Inc.

WINDING # 35WGG341

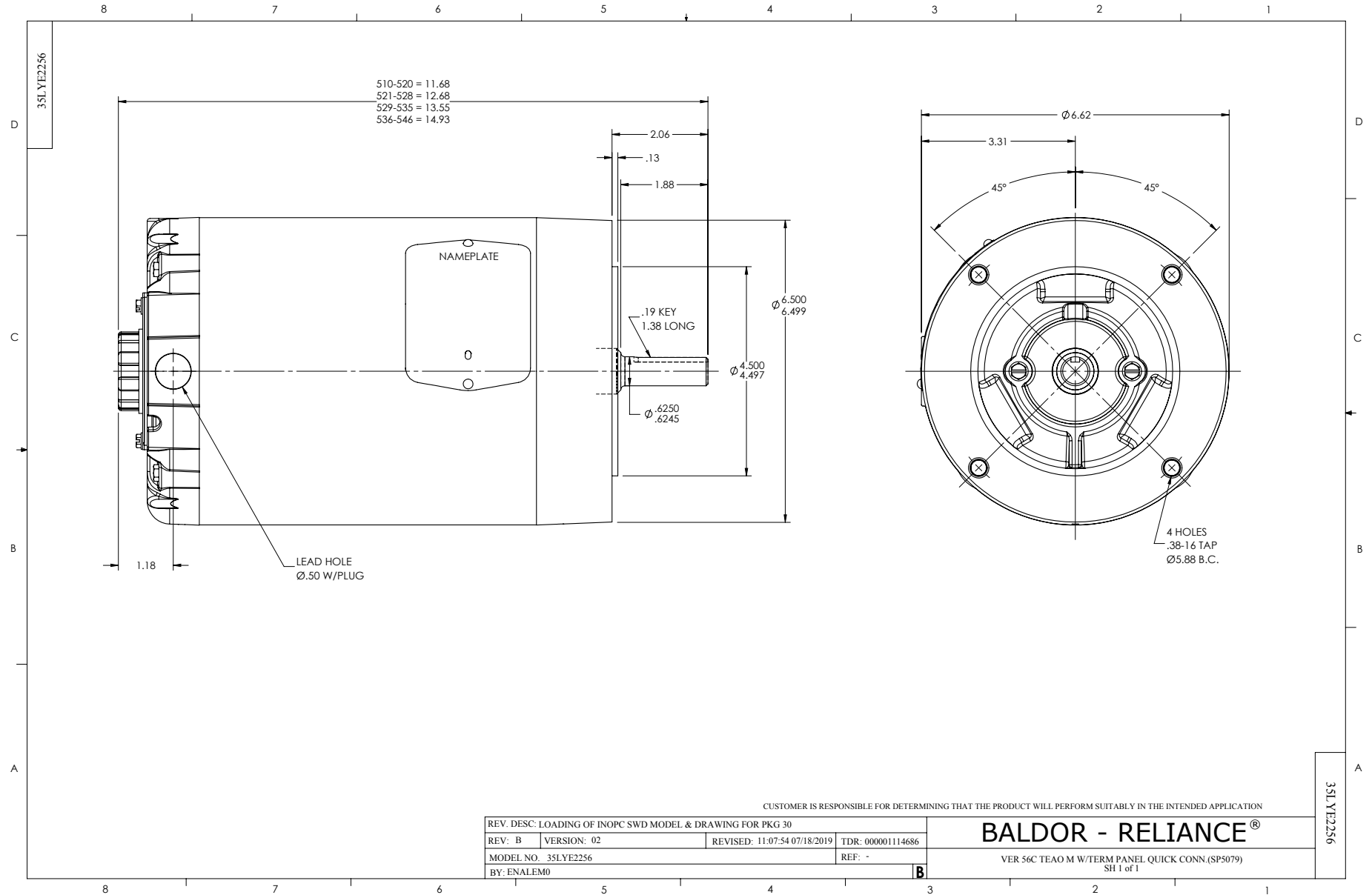
Typical performance - not guaranteed values.

0.5 HP 3 PH 60 HZ 865 RPM 460 V 3522M

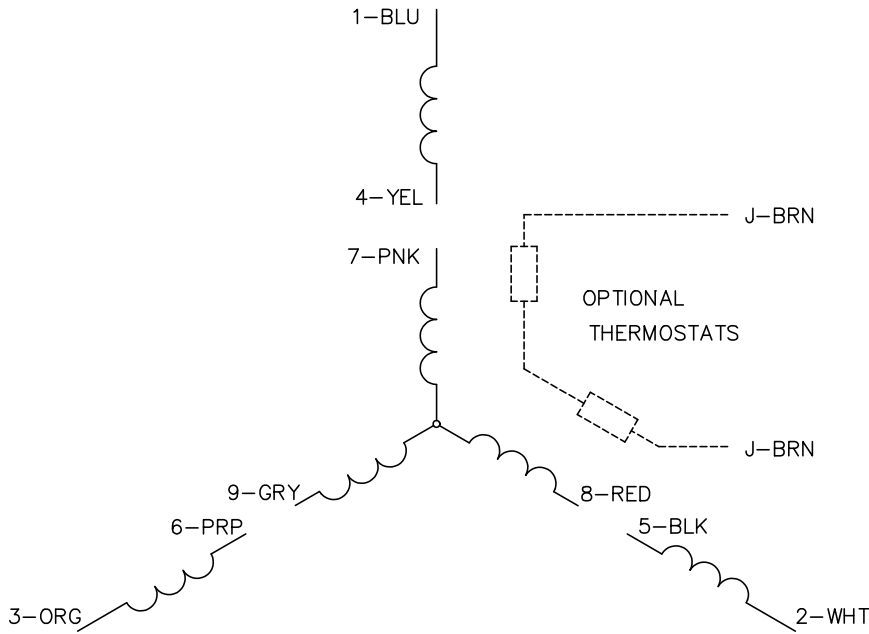
TORQUES (LB-FT): PO=10.33 PU=6.41 LR=7.03 LRA=5.49



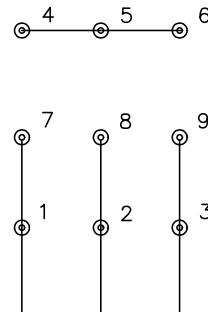
4/18/2025 ACPERF, record # 87788



CD0005



LOW VOLTAGE
(2Y)



LINE

HIGH VOLTAGE
(1Y)



LINE

NOTES:

1. INTERCHANGE ANY TWO LINE LEADS TO REVERSE ROTATION.
2. OPTIONAL THERMOSTATS ARE PROVIDED WHEN SPECIFIED.
3. ACTUAL NUMBER OF INTERNAL PARALLEL CIRCUITS MAY BE A MULTIPLE OF THOSE SHOWN ABOVE.
4. LEAD COLORS ARE OPTIONAL. LEADS MUST ALWAYS BE NUMBERED AS SHOWN.

CD0005

REV. DESC: REVISE TO SHOW OPTIONAL COLORS			
REV. LTR: E	BY: JLP	REVISED: 01/19/99 10:15	TDR: 0171435
S00000		FILE: AAA00005140	MDL: -
		MTL: -	

BALDOR ELECTRIC Co.

3PH, DV, 9 LEADS