

ABB BALDOR RELIANCE III

Customer information packet

VAOM3527

1 AIR OVERHP, 865RPM, 3PH, 60HZ, 56C, 3546M, T

Class - None

Division - Not Applicable

Specifications

Enclosure	TEAO
Frame	56C
Frame Material	Steel
Frequency	60.00 Hz
Haz Area Class and Group	None
Haz Area Division	Not Applicable
Motor Letter Type	Three Phase
Output @ Frequency	1.000 HP @ 60 HZ
Phase	3
Synchronous Speed @ Frequency	900 RPM @ 60 HZ
Voltage @ Frequency	460.0 V @ 60 HZ 230.0 V @ 60 HZ 208.0 V @ 60 HZ
Agency Approvals	C UR US
Ambient Temperature	40 °C
Auxiliary Box	NO AUXILLARY BOX
Auxiliary Box Lead Termination	None
Base Indicator	No Mounting
Bearing Grease Type	Polyrex EM (-20F +300F)
Blower	None
Current @ Voltage	4.400 A @ 230.0 V 4.200 A @ 208.0 V 2.200 A @ 460.0 V
Design Code	B
Drip Cover	No Drip Cover
Duty Rating	CONT
Efficiency @ 100% Load	75.5 %
Electrically Isolated Bearing	Not Electrically Isolated
Feedback Device	NO FEEDBACK
Front Shaft Indicator	None
Heater Indicator	No Heater
High Voltage Full Load Amps	2.2 a

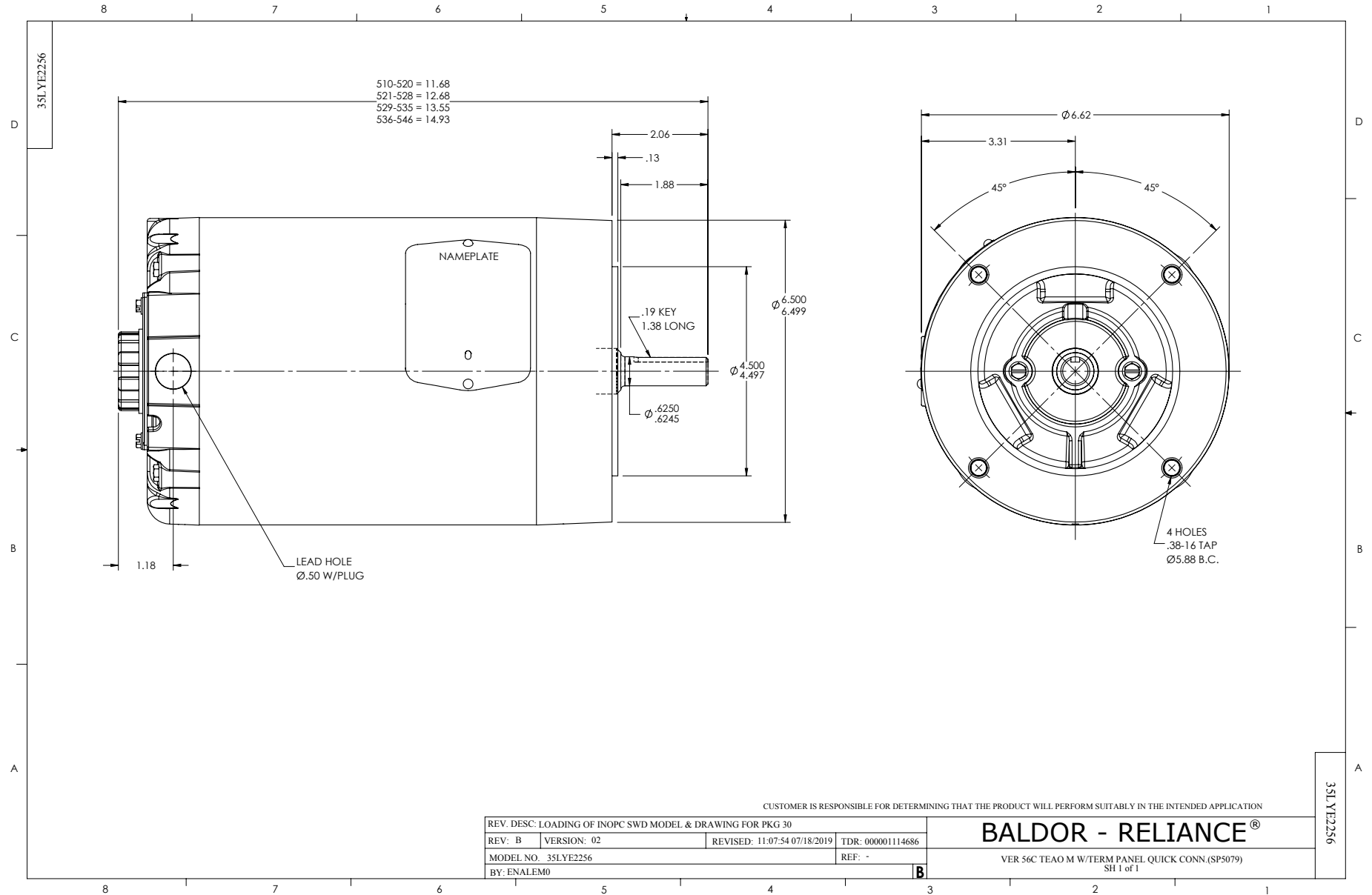
Part Detail

Revision	D
Type	AC
Mech. spec.	35E2256
Base	
Status	PRD/A
Elec. spec.	35WGG675
Layout	35LYE2256
Eff. date	04-10-2026
CD Diagram	CD0005
Poles	08
Leads	9#18
Proprietary	False
Created date	09-26-2024

Insulation Class	F
Inverter Code	Not Inverter
KVA Code	K
Lifting Lugs	No Lifting Lugs
Locked Bearing Indicator	Locked Bearing
Motor Lead Quantity/Wire Size	9 @ 18 AWG
Motor Lead Termination	None
Motor Standards	NEMA
Motor Type	3546M
Mounting Arrangement	F1
Number of Poles	8
Overall Length	14.93 IN
Power Factor	55
Product Family	General Purpose
Pulley End Bearing Type	Sealed Bearing
Pulley Face Code	C-Face
Pulley Shaft Indicator	Standard
Rodent Screen	None
Service Factor	1.00
Shaft Diameter	0.625 IN
Shaft Ground Indicator	No Shaft Grounding
Shaft Rotation	Reversible
Shaft Slinger Indicator	No Slinger
Speed	865 rpm
Speed Code	Single Speed
Starting Method	Direct on line
Thermal Device - Bearing	None
Thermal Device - Winding	None
Vibration Sensor Indicator	No Vibration Sensor
Winding Thermal 1	None
Winding Thermal 2	None

Nameplate

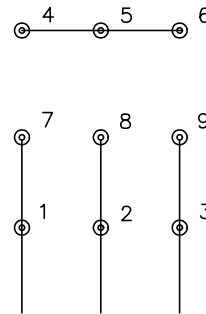
NP1256L									
CAT.NO.	VAOM3527								
SPEC.	35E2256G675G1								
HP	1 AIR OVER								
VOLTS	208-230/460								
AMP	4.2-4.4/2.2								
RPM	865								
FRAME	56C		HZ	60		PH	3		
SER.F.	1.00	CODE	K	DES	B	CLASS	F		
NEMA-NOM-EFF	75.5	PF	55						
RATING	40C AMB-CONT								
CC									
DE	6205	ODE	6203						
ENCL	TEAO	SN							



CD0005

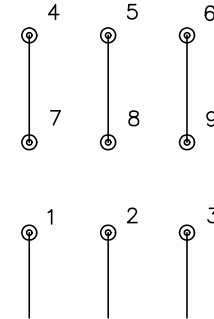


LOW VOLTAGE
(2Y)



LINE

HIGH VOLTAGE
(1Y)



LINE

NOTES:

1. INTERCHANGE ANY TWO LINE LEADS TO REVERSE ROTATION.
2. OPTIONAL THERMOSTATS ARE PROVIDED WHEN SPECIFIED.
3. ACTUAL NUMBER OF INTERNAL PARALLEL CIRCUITS MAY BE A MULTIPLE OF THOSE SHOWN ABOVE.
4. LEAD COLORS ARE OPTIONAL. LEADS MUST ALWAYS BE NUMBERED AS SHOWN.

CD0005

REV. DESC: REVISE TO SHOW OPTIONAL COLORS

REV. LTR: E BY: JLP REVISED: 01/19/99 10:15 TDR: 0171435

500000

FILE: AAA00005140

MDL: -

MTL: -

BALDOR ELECTRIC Co.

3PH, DV, 9 LEADS