



Customer information packet

UCME759

7.5-9.2 AIR OVERHP, 3450RPM, 3PH, 60HZ, 184T

Class - None

Division - Not Applicable

Specifications

Enclosure	TEAO
Frame	184TZ
Frame Material	Steel
Frequency	60.00 Hz
Haz Area Class and Group	None
Haz Area Division	Not Applicable
Motor Letter Type	Three Phase
Output @ Frequency	7.500 HP @ 60 HZ 9.200 HP @ 60 HZ
Phase	3
Synchronous Speed @ Frequency	3600 RPM @ 60 HZ
Voltage @ Frequency	230.0 V @ 60 HZ 208.0 V @ 60 HZ 460.0 V @ 60 HZ
Agency Approvals	UR CSA
Ambient Temperature	40 °C
Auxillary Box	No Auxillary Box
Auxillary Box Lead Termination	None
Base Indicator	Rigid
Bearing Grease Type	Polyrex EM (-20F +300F)
Blower	None
Current @ Voltage	8.500 A @ 460.0 V 18.800 A @ 208.0 V 17.000 A @ 230.0 V
Design Code	B
Drip Cover	No Drip Cover
Duty Rating	CONT
Efficiency @ 100% Load	89.5 %
Electrically Isolated Bearing	Not Electrically Isolated
Feedback Device	NO FEEDBACK
Front Face Code	Standard

Part detail

Revision	L
Type	AC
Mech. spec.	36Q213
Base	
Status	PRD/A
Elec. spec.	36WGW514
Layout	36LYQ213
Eff. date	05-23-2023
CD Diagram	CD0005
Poles	02
Leads	9#16 30" long Y
Proprietary	False
Created date	03-06-2014

Front Shaft Indicator	None
Heater Indicator	No Heater
High Voltage Full Load Amps	8.5 a
Insulation Class	F
Inverter Code	Inverter Ready
KVA Code	M
Lifting Lugs	Standard Lifting Lugs
Locked Bearing Indicator	Locked Bearing
Motor Lead Exit	Pipe Or Pipe Adaptor
Motor Lead Quantity/Wire Size	9 @ 16 AWG
Motor Lead Termination	Flying Leads
Motor Standards	NEMA
Motor Type	3640M
Mounting Arrangement	F1
Number of Poles	2
Overall Length	16.88 IN
Power Factor	90
Product Family	General Purpose
Pulley End Bearing Type	Ball
Pulley Face Code	Standard
Pulley Shaft Indicator	Tapped & Key
Rodent Screen	None
RoHS Status	ROHS COMPLIANT
Service Factor	1.00
Shaft Diameter	1.125 IN
Shaft Extension Location	Pulley End
Shaft Ground Indicator	No Shaft Grounding
Shaft Rotation	Reversible
Shaft Slinger Indicator	Shaft Slinger
Speed	3450 rpm
Speed Code	Single Speed
Starting Method	Direct on line
Thermal Device - Bearing	None
Thermal Device - Winding	Normally Closed Thermostat

Vibration Sensor Indicator	No Vibration Sensor
Winding Thermal 1	None
Winding Thermal 2	None

Nameplate

NP1279L										
CAT.NO.	UCME759									
SPEC.	36Q213W514G1									
HP	7.5-9.2 AIR OVER									
VOLTS	208-230/460									
AMP	18.8-17/8.5									
RPM	3450									
FRAME	184TZ	HZ	60	PH	3					
SER.F.	1.00	CODE	M	DES	B	CL	F			
NEMA-NOM-EFF	89.5	PF	90							
RATING	40C AMB-CONT									
CC									USABLE AT 208V	N/A
DE	6206	ODE	6205							
ENCL	TEAO	SN								

NP3114L							
CAT.NO.	UCME759						
SPEC.	36Q213W514G1						
HP	7.5-9.2 AIR OVER						
VOLTS	208-230/460						
AMP	18.8-17/8.5						
RPM	3450						
FRAME	184TZ	HZ	60	PH	3		
SER.F.	1.00	CODE	M	DES	B	CL	F
NEMA-NOM-EFF	89.5	PF	90				
RATING	40C AMB-CONT						
CC							USABLE AT 208V N/A
DE	6206	ODE	6205				
ENCL	TEAO	SN					

Accessories

Part number	Description	Multiplier
36-3301FD	C FACE KIT FARM DUTY 182-4TC ENCL, 6206	P1
36EP1304A62SP	FLANGE MTD ENDPLATE 182-4TD -ENCL (LESS	A8

AC Induction Motor Performance Data

Record # 10786

Typical performance - not guaranteed values

Winding: 36WGW514-R001		Type: 3640M	Enclosure: OPEN	
Nameplate Data			460 V, 60 Hz: High Voltage Connection	
Rated Output (HP)	7.5-9.2 AIR OVER		Full Load Torque	15 LB-FT
Volts	208-230/460		Start Configuration	direct on line
Full Load Amps	18.8-17/8.5		Breakdown Torque	68 LB-FT
R.P.M.	3450		Pull-up Torque	51 LB-FT
Hz	60 Phase	3	Locked-rotor Torque	56 LB-FT
NEMA Design Code	B KVA Code	M	Starting Current	100 A
Service Factor (S.F.)	1		No-load Current	2.7 A
NEMA Nom. Eff.	89.5 Power Factor	90	Line-line Res. @ 25°C	1.32 Ω
Rating - Duty	40C AMB-CONT		Temp. Rise @ Rated Load	72°C

Load Characteristics 460 V, 60 Hz, 9.8 HP

% of Rated Load	25	50	75	100	125	150
Power Factor	76	89	93	95	95	94
Efficiency	85	88	88	87	85	83
Speed	3557	3518	3478	3434	3389	3340
Line amperes	4.1	6.5	9	11.6	14.4	17.6

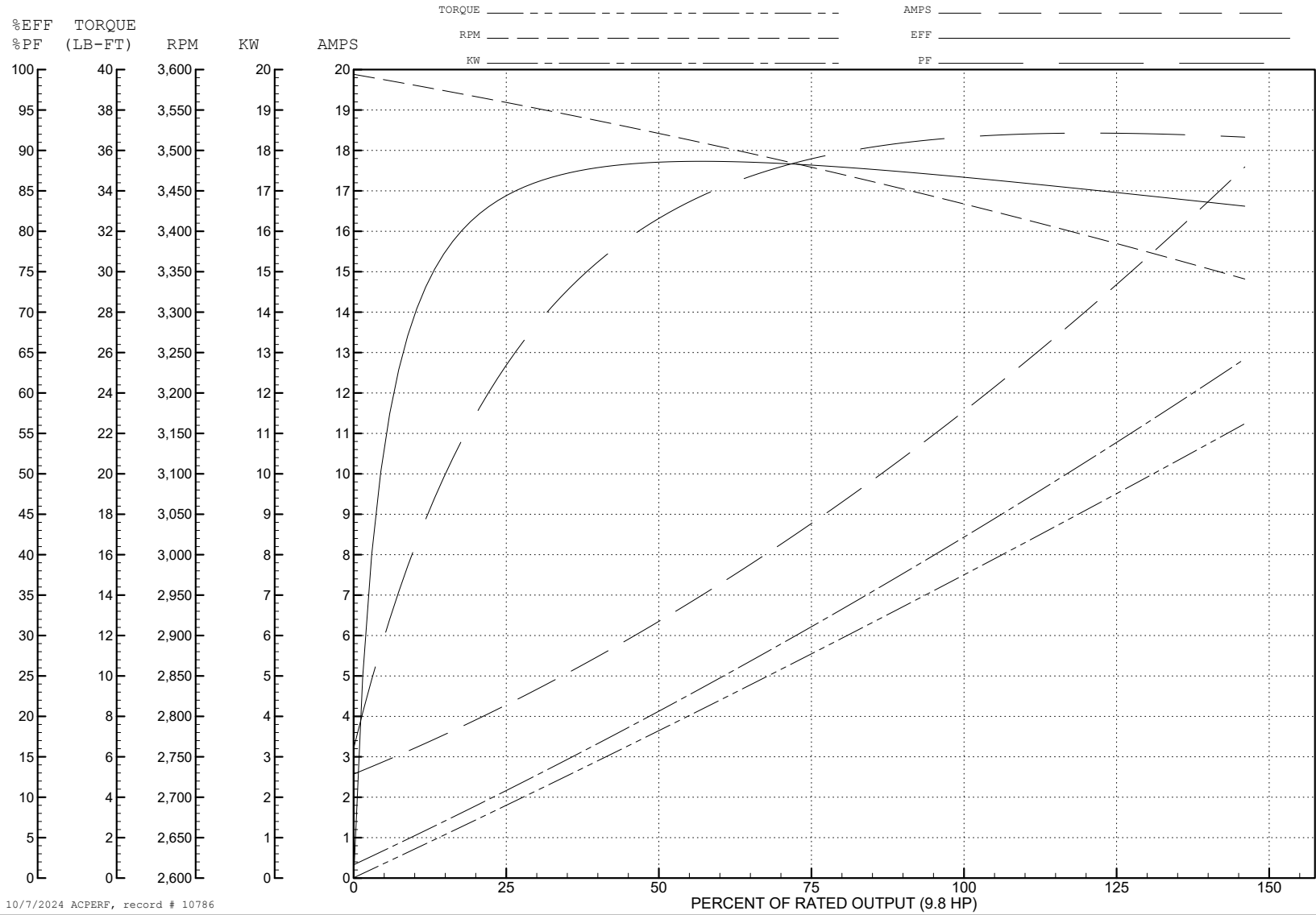
ABB Motors and Mechanical Inc.

WINDING # 36GW514

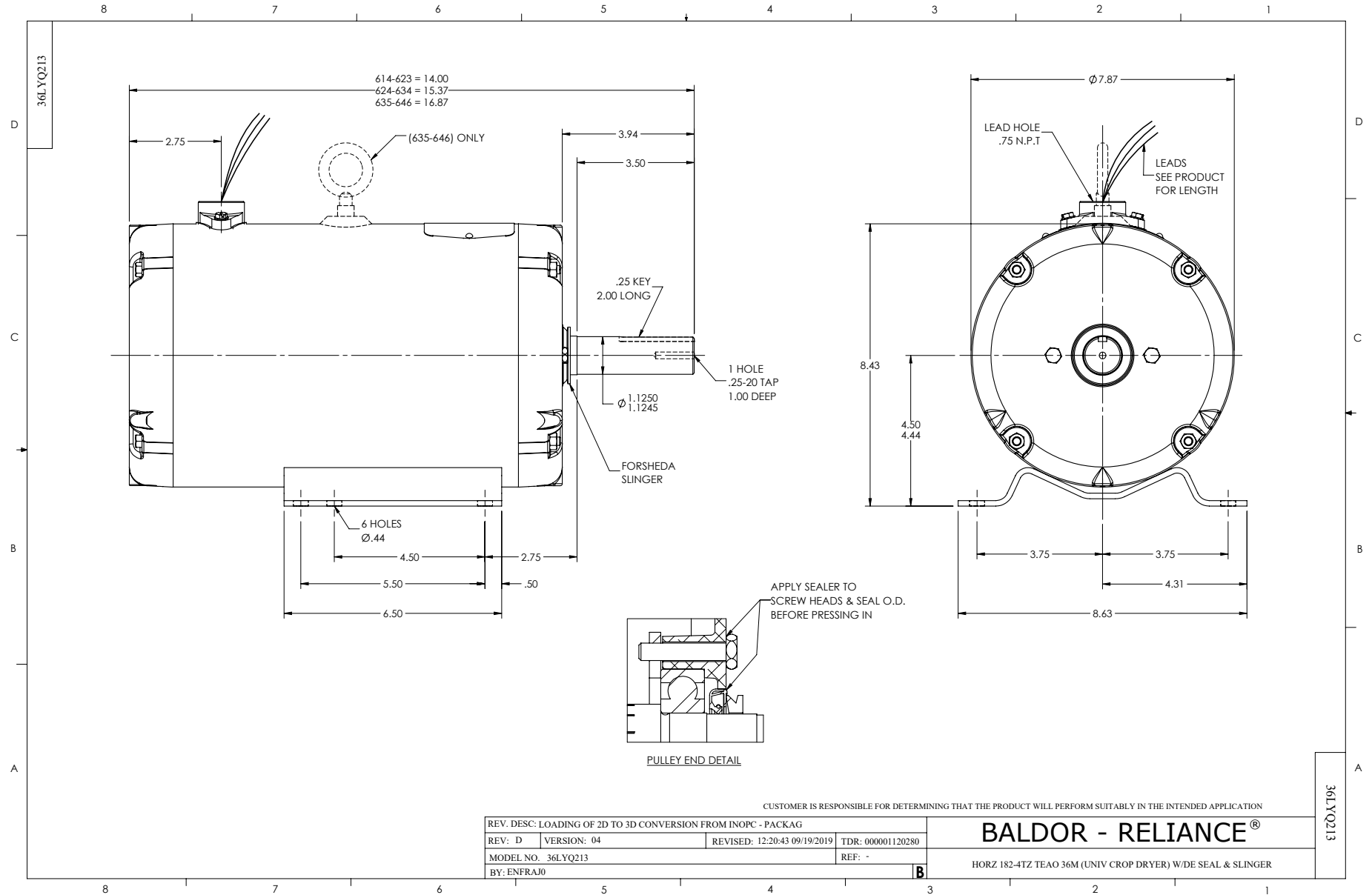
9.8 HP 3 PH 60 HZ 3450 RPM 460 V 3640M

Typical performance - not guaranteed values.

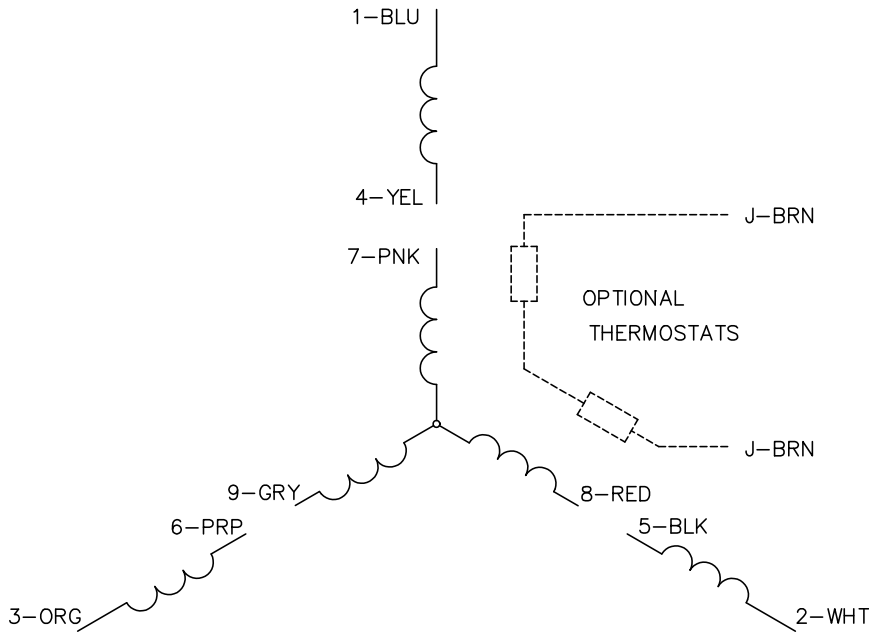
TORQUES (LB-FT): PO=68 PU=51 LR=56 LRA=100



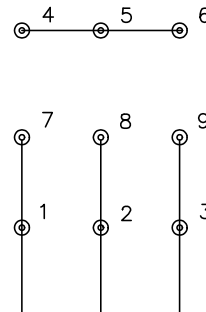
10/7/2024 ACPERF, record # 10786



CD0005

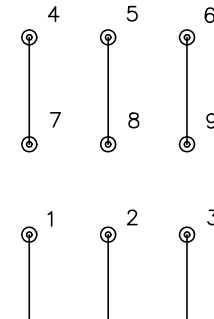


LOW VOLTAGE
(2Y)



LINE

HIGH VOLTAGE
(1Y)



LINE

NOTES:

1. INTERCHANGE ANY TWO LINE LEADS TO REVERSE ROTATION.
2. OPTIONAL THERMOSTATS ARE PROVIDED WHEN SPECIFIED.
3. ACTUAL NUMBER OF INTERNAL PARALLEL CIRCUITS MAY BE A MULTIPLE OF THOSE SHOWN ABOVE.
4. LEAD COLORS ARE OPTIONAL. LEADS MUST ALWAYS BE NUMBERED AS SHOWN.

CD0005

REV. DESC: REVISE TO SHOW OPTIONAL COLORS			
REV. LTR: E	BY: JLP	REVISED: 01/19/99 10:15	TDR: 0171435
S00000		FILE: AAA00005140	MDL: -
		MTL: -	

BALDOR ELECTRIC Co.

3PH, DV, 9 LEADS