

BALDOR • RELIANCE

Customer information packet

UCME3145

3-4.5HP, 3450RPM, 3PH, 60HZ, 143TYZ, 3528M, TE

Class - None

Division - Not Applicable

Specifications

Enclosure	TEAO
Frame	143TYZ
Frame Material	Steel
Frequency	60.00 Hz
Haz Area Class and Group	None
Haz Area Division	Not Applicable
Motor Letter Type	Three Phase
Output @ Frequency	3.000 HP @ 60 HZ 4.500 HP @ 60 HZ
Phase	3
Synchronous Speed @ Frequency	3600 RPM @ 60 HZ
Voltage @ Frequency	460.0 V @ 60 HZ 230.0 V @ 60 HZ 208.0 V @ 60 HZ
Agency Approvals	CSA UR
Ambient Temperature	40 °C
Auxiliary Box	NO AUXILLARY BOX
Auxiliary Box Lead Termination	None
Base Indicator	Rigid
Bearing Grease Type	Polyrex EM (-20F +300F)
Blower	None
Current @ Voltage	6.000 A @ 460.0 V 13.000 A @ 208.0 V 12.000 A @ 230.0 V
Design Code	B
Drip Cover	No Drip Cover
Duty Rating	CONT
Electrically Isolated Bearing	Not Electrically Isolated
Feedback Device	NO FEEDBACK
Front Face Code	Standard
Front Shaft Indicator	None

Part detail

Revision	Q
Type	AC
Mech. spec.	35E2501
Base	
Status	PRD/A
Elec. spec.	35WGS055
Layout	35LYE2501
Eff. date	01-02-2025
CD Diagram	CD0005
Poles	02
Leads	9#18
Proprietary	False
Created date	03-04-2014

Heater Indicator	No Heater
High Voltage Full Load Amps	6.0 a
Insulation Class	H
Inverter Code	Not Inverter
KVA Code	K
Lifting Lugs	No Lifting Lugs
Locked Bearing Indicator	Locked Bearing
Motor Lead Exit	Pipe Or Pipe Adaptor
Motor Lead Quantity/Wire Size	9 @ 18 AWG
Motor Lead Termination	Flying Leads
Motor Standards	NEMA
Motor Type	3528M
Mounting Arrangement	F1
Number of Poles	2
Overall Length	13.37 IN
Product Family	General Purpose
Pulley End Bearing Type	Sealed Bearing
Pulley Face Code	Standard
Pulley Shaft Indicator	Tapped & Key
Rodent Screen	None
RoHS Status	ROHS COMPLIANT
Service Factor	1.00
Shaft Diameter	0.875 IN
Shaft Extension Location	Pulley End
Shaft Ground Indicator	No Shaft Grounding
Shaft Rotation	Reversible
Shaft Slinger Indicator	No Slinger
Speed	3450 rpm
Speed Code	Single Speed
Starting Method	Direct on line
Thermal Device - Bearing	None
Thermal Device - Winding	Normally Closed Thermostat
Vibration Sensor Indicator	No Vibration Sensor
Winding Thermal 1	None

Winding Thermal 2

None

Nameplate

NP1279L							
CAT.NO.	UCME3145						
SPEC.	35E2501S055G1						
HP	3-4.5						
VOLTS	208-230/460						
AMP	13-12/6						
RPM	3450						
FRAME	143TYZ	HZ	60	PH	3		
SER.F.	1.00	CODE	K	DES	B	CL	H
NEMA-NOM-EFF		PF					
RATING	40C AMB-CONT						
CC							
DE	6206	ODE	6203				
ENCL	TEAO	SN					

NP1263L

CAT.NO.	UCME3145						
SPEC.	35E2501S055G1						
HP	3-4.5						
VOLTS	208-230/460						
AMP	13-12/6						
RPM	3450						
FRAME	143TYZ		HZ	60		PH	3
SER.F.	1.00	CODE	K	DES	B	CL	H
NEMA-NOM-EFF		PF					
RATING	40C AMB-CONT						
CC							
DE	6206	ODE	6203				
ENCL	TEAO	SN					

Accessories

Part number	Description	Multiplier
35-3300FD	C FACE KIT FARM DUTY 143-5TC ENCL, 6205	A8

AC Induction Motor Performance Data

Record # 8898

Typical performance - not guaranteed values

Winding: 35WGS055-R002		Type: 3528M	Enclosure: TEAO
Nameplate Data		460 V, 60 Hz: High Voltage Connection	
Rated Output (HP)	3-4.5	Full Load Torque	6.8 LB-FT
Volts	208-230/460	Start Configuration	direct on line
Full Load Amps	13-12/6	Breakdown Torque	31.6 LB-FT
R.P.M.	3450	Pull-up Torque	17.1 LB-FT
Hz	60 Phase	Locked-rotor Torque	28 LB-FT
NEMA Design Code	B KVA Code	Starting Current	50 A
Service Factor (S.F.)	1	No-load Current	3 A
NEMA Nom. Eff.	0 Power Factor	Line-line Res. @ 25°C	3.8 Ω
Rating - Duty	40C AMB-CONT	Temp. Rise @ Rated Load	

Load Characteristics 460 V, 60 Hz, 4.5 HP

% of Rated Load	25	50	75	100	125	150
Power Factor	48	69	81	86	89	92
Efficiency	68.9	79.4	82.5	82.7	81.7	79.8
Speed	3562	3530	3492	3455	3412	3359
Line amperes	3.2	3.9	4.8	5.9	7.1	8.4

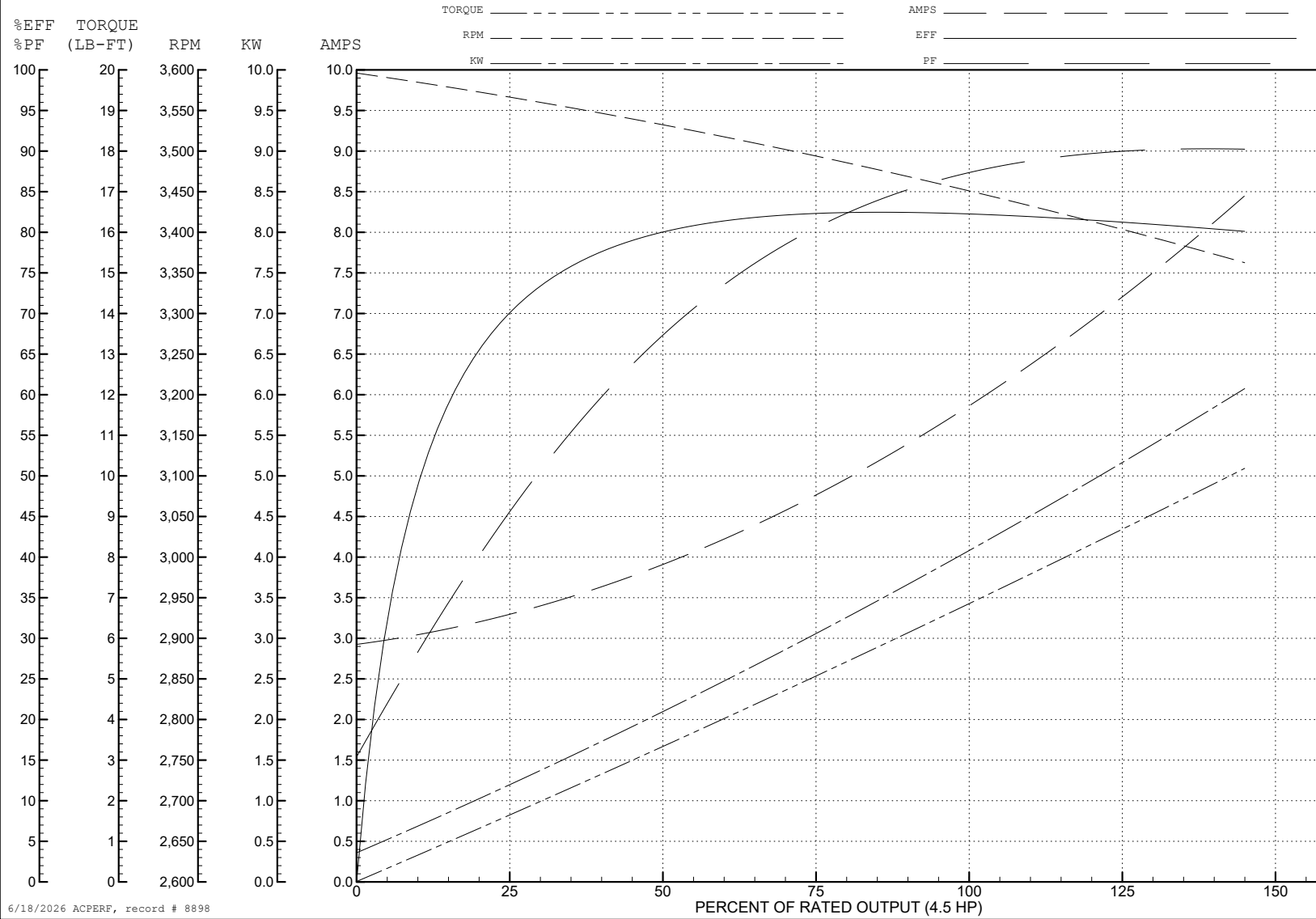
ABB Motors and Mechanical Inc.

WINDING # 35WGS055

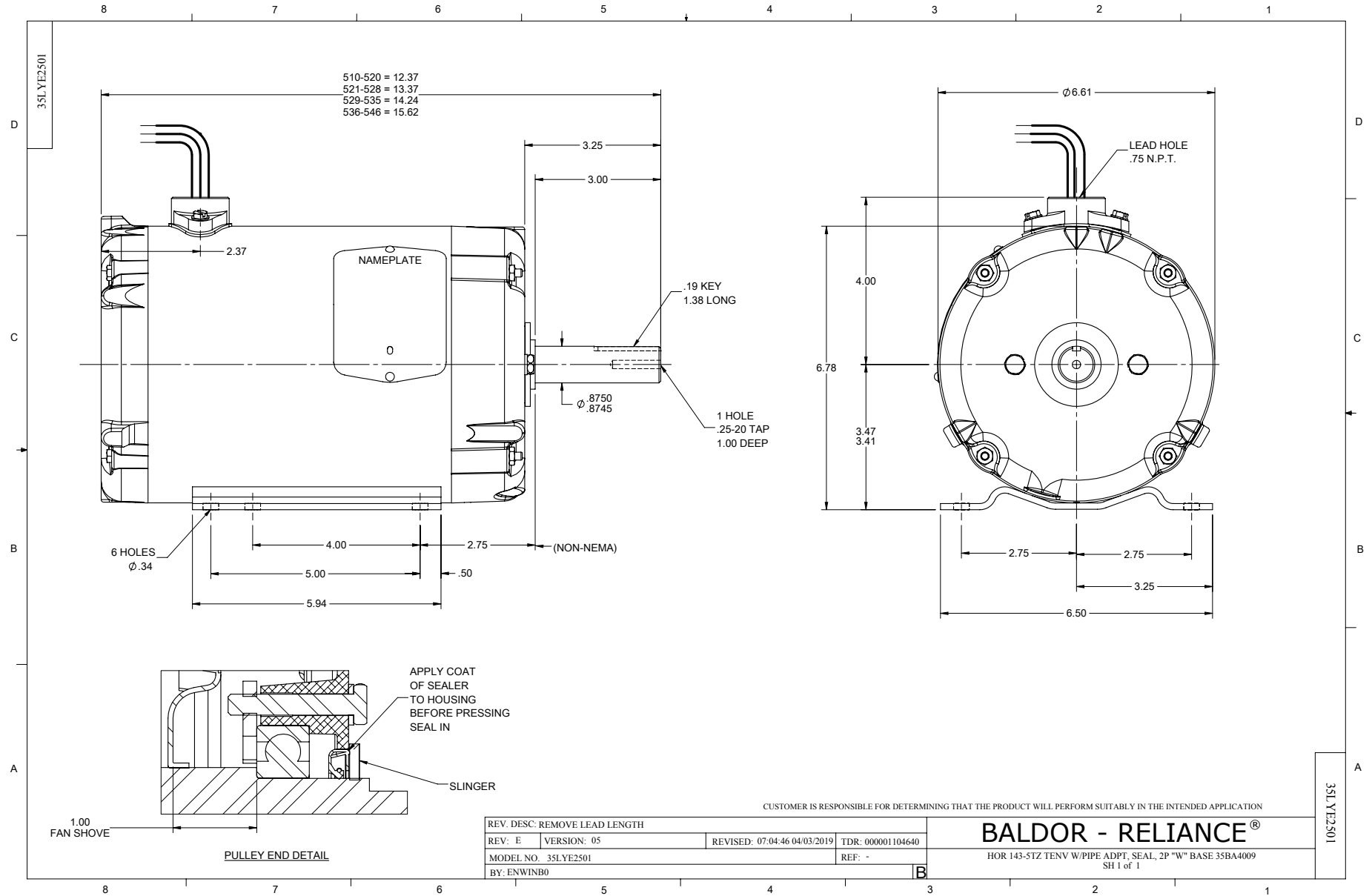
4.5 HP 3 PH 60 HZ 3450 RPM 460 V 3528M

Typical performance - not guaranteed values.

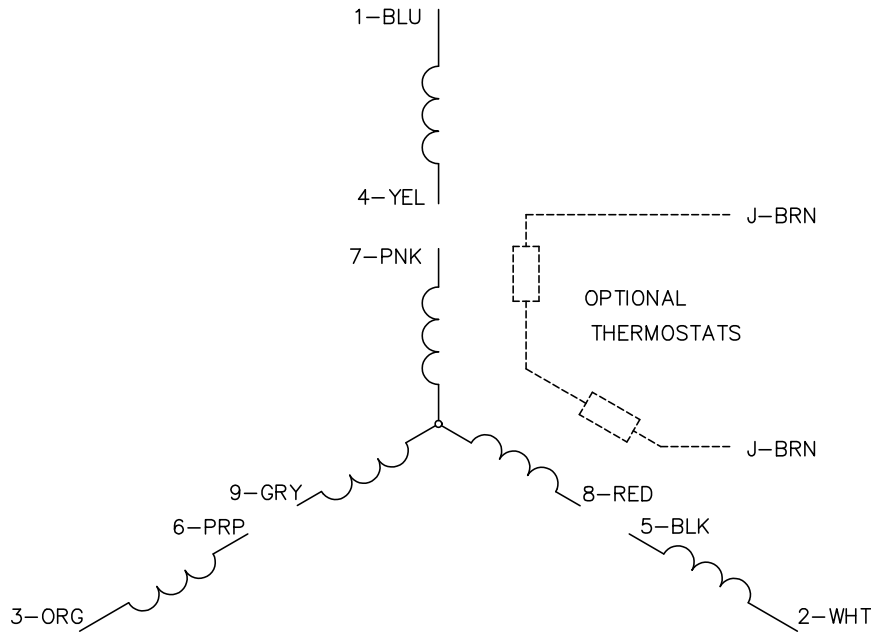
TORQUES (LB-FT): PO=31.6 PU=17.1 LR=28 LRA=50



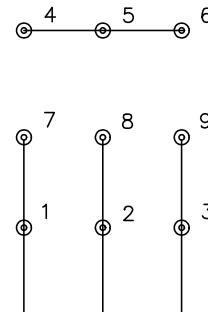
6/18/2026 ACPERF, record # 8898



CD0005

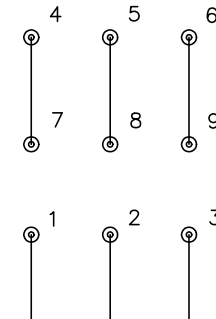


LOW VOLTAGE
(2Y)



LINE

HIGH VOLTAGE
(1Y)



LINE

NOTES:

1. INTERCHANGE ANY TWO LINE LEADS TO REVERSE ROTATION.
2. OPTIONAL THERMOSTATS ARE PROVIDED WHEN SPECIFIED.
3. ACTUAL NUMBER OF INTERNAL PARALLEL CIRCUITS MAY BE A MULTIPLE OF THOSE SHOWN ABOVE.
4. LEAD COLORS ARE OPTIONAL. LEADS MUST ALWAYS BE NUMBERED AS SHOWN.

REV. DESC: REVISE TO SHOW OPTIONAL COLORS			
REV. LTR: E	BY: JLP	REVISED: 01/19/99 10:15	TDR: 0171435
S00000		FILE: AAA00005140	MDL: -
		MTL: -	

BALDOR ELECTRIC Co.

3PH, DV, 9 LEADS

CD0005