



Customer information packet

UCME1014

10-14 AIR OVERHP, 3450RPM, 3PH, 60HZ, 215Z, 3

Class - None

Division - Not Applicable

Specifications

Enclosure	TEAO
Frame	215Z
Frame Material	Steel
Frequency	60.00 Hz
Haz Area Class and Group	None
Haz Area Division	Not Applicable
Motor Letter Type	Three Phase
Output @ Frequency	10.000 HP @ 60 HZ 14.000 HP @ 60 HZ
Phase	3
Synchronous Speed @ Frequency	3600 RPM @ 60 HZ
Voltage @ Frequency	460.0 V @ 60 HZ 230.0 V @ 60 HZ 208.0 V @ 60 HZ
Agency Approvals	CSA UR
Ambient Temperature	40 °C
Auxillary Box	No Auxillary Box
Auxillary Box Lead Termination	None
Base Indicator	Rigid
Bearing Grease Type	Polyrex EM (-20F +300F)
Blower	None
Current @ Voltage	35.000 A @ 208.0 V 33.000 A @ 230.0 V 16.500 A @ 460.0 V
Design Code	B
Drip Cover	No Drip Cover
Duty Rating	CONT
Electrically Isolated Bearing	Not Electrically Isolated
Feedback Device	NO FEEDBACK
Front Face Code	Standard
Front Shaft Indicator	None

Part detail

Revision	M
Type	AC
Mech. spec.	37N422
Base	
Status	PRD/A
Elec. spec.	37WGY842
Layout	37LYN422
Eff. date	10-30-2023
CD Diagram	CD0005
Poles	02
Leads	9#14 32" long Y
Proprietary	False
Created date	03-07-2014

Heater Indicator	No Heater
High Voltage Full Load Amps	16.5 a
Insulation Class	F
Inverter Code	Not Inverter
KVA Code	H
Lifting Lugs	Standard Lifting Lugs
Locked Bearing Indicator	Locked Bearing
Motor Lead Exit	Pipe Or Pipe Adaptor
Motor Lead Quantity/Wire Size	9 @ 14 AWG
Motor Lead Termination	Flying Leads
Motor Standards	NEMA
Motor Type	3734M
Mounting Arrangement	F1
Number of Poles	2
Overall Length	16.69 IN
Product Family	General Purpose
Pulley End Bearing Type	Sealed Bearing
Pulley Face Code	Standard
Pulley Shaft Indicator	Tapped & Key
Rodent Screen	None
RoHS Status	ROHS COMPLIANT
Service Factor	1.00
Shaft Diameter	1.125 IN
Shaft Extension Location	Pulley End
Shaft Ground Indicator	No Shaft Grounding
Shaft Rotation	Reversible
Shaft Slinger Indicator	Shaft Slinger
Speed	3450 rpm
Speed Code	Single Speed
Starting Method	Direct on line
Thermal Device - Bearing	None
Thermal Device - Winding	Normally Closed Thermostat
Vibration Sensor Indicator	No Vibration Sensor
Winding Thermal 1	None

Winding Thermal 2

None

Nameplate

NP1279L									
CAT.NO.	UCME1014								
SPEC.	37N422Y842G1								
HP	10-14 AIR OVER								
VOLTS	208-230/460								
AMP	35-33/16.5								
RPM	3450								
FRAME	215Z	HZ	60	PH	3				
SER.F.	1.00	CODE	H	DES	B	CL	F		
NEMA-NOM-EFF		PF							
RATING	40C AMB-CONT								
CC		USABLE AT 208V							N/A
DE	6307	ODE	6206						
ENCL	TEAO	SN							

NP3114L							
CAT.NO.	UCME1014						
SPEC.	37N422Y842G1						
HP	10-14 AIR OVER						
VOLTS	208-230/460						
AMP	35-33/16.5						
RPM	3450						
FRAME	215Z	HZ	60	PH	3		
SER.F.	1.00	CODE	H	DES	B	CL	F
NEMA-NOM-EFF		PF					
RATING	40C AMB-CONT						
CC		USABLE AT 208V					N/A
DE	6307	ODE	6206				
ENCL	TEAO	SN					

Accessories

Part number	Description	Multiplier
37-3301FD	C FACE KIT FARM DUTY 213-5TC, ENCL, 6307	A8

AC Induction Motor Performance Data

Record # 12585

Typical performance - not guaranteed values

Winding: 37WGY842-R001			Type: 3734M	Enclosure: TEAO	
Nameplate Data			460 V, 60 Hz: High Voltage Connection		
Rated Output (HP)	10-14 AIR OVER		Full Load Torque	21.28 LB-FT	
Volts	208-230/460		Start Configuration	direct on line	
Full Load Amps	35-33/16.5		Breakdown Torque	69.05 LB-FT	
R.P.M.	3450		Pull-up Torque	36.52 LB-FT	
Hz	60 Phase	3	Locked-rotor Torque	42.6 LB-FT	
NEMA Design Code	B KVA Code	H	Starting Current	122 A	
Service Factor (S.F.)	1		No-load Current	4.67 A	
NEMA Nom. Eff.	0 Power Factor	0	Line-line Res. @ 25°C	0.776 Ω	
Rating - Duty	40C AMB-CONT		Temp. Rise @ Rated Load		
			Locked-rotor Power Factor	34.9	
			Rotor inertia	0.311 LB-FT ²	

Load Characteristics 460 V, 60 Hz, 14 HP

% of Rated Load	25	50	75	100	125	150
Power Factor	66	83	88	90	91	90
Efficiency	82.9	88.6	89.8	89.5	88.3	86.6
Speed	3574	3552	3527	3499	3467	3429
Line amperes	6.18	9.17	12.66	16.46	20.53	24.92

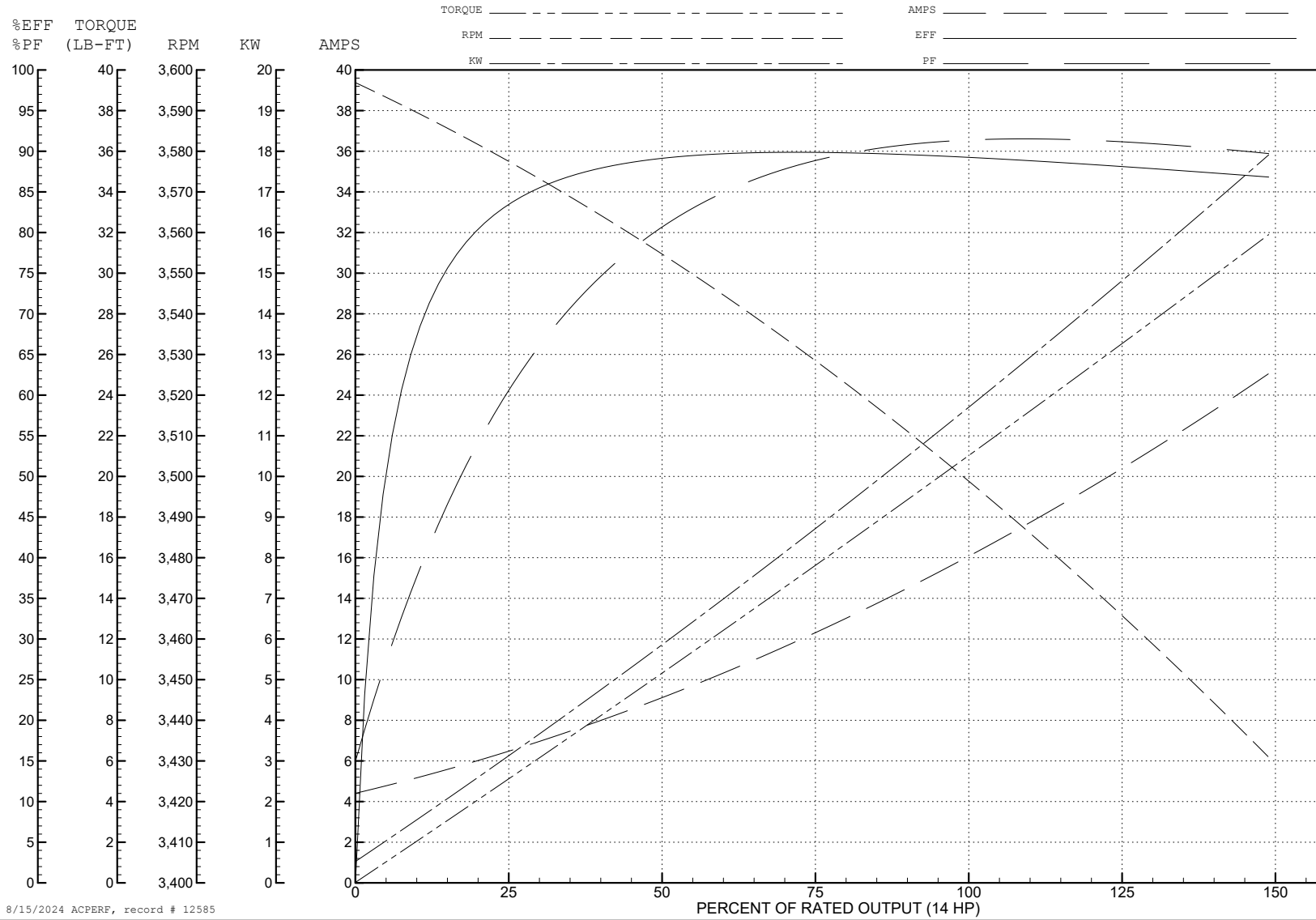
ABB Motors and Mechanical Inc.

WINDING # 37WGY842

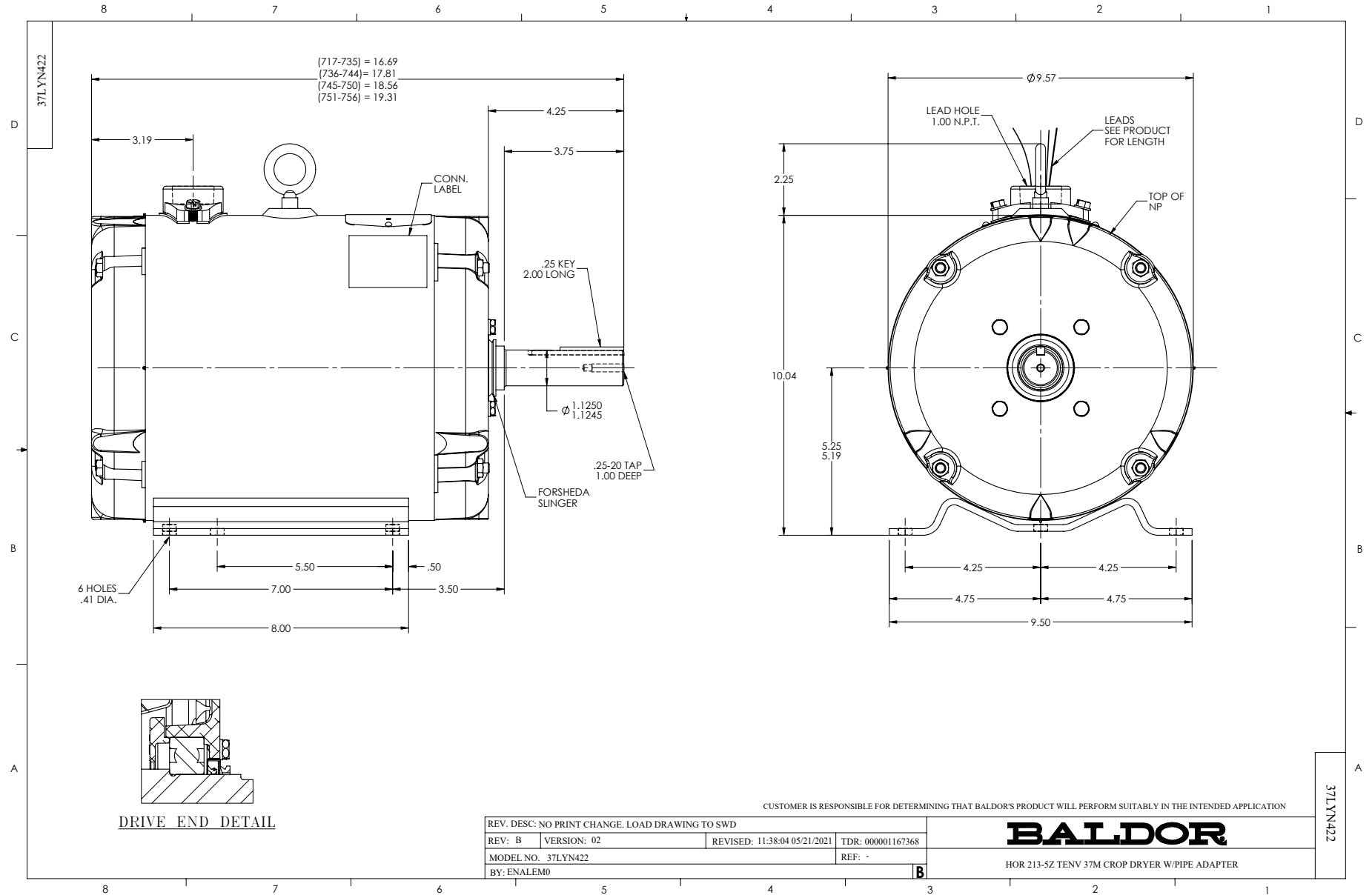
Typical performance - not guaranteed values.

14 HP 3 PH 60 HZ 3450 RPM 460 V 3734M

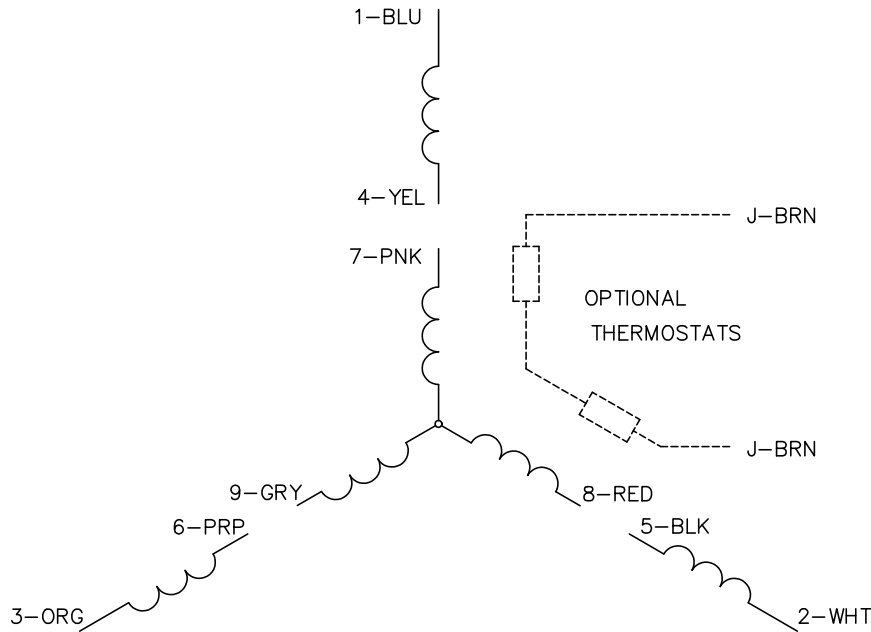
TORQUES (LB-FT): PO=69.05 PU=36.52 LR=42.6 LRA=122



8/15/2024 ACPERF, record # 12585



CD0005

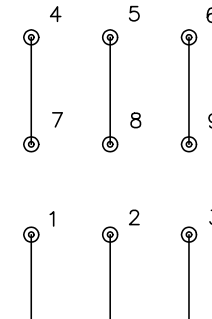


LOW VOLTAGE
(2Y)



LINE

HIGH VOLTAGE
(1Y)



LINE

NOTES:

1. INTERCHANGE ANY TWO LINE LEADS TO REVERSE ROTATION.
2. OPTIONAL THERMOSTATS ARE PROVIDED WHEN SPECIFIED.
3. ACTUAL NUMBER OF INTERNAL PARALLEL CIRCUITS MAY BE A MULTIPLE OF THOSE SHOWN ABOVE.
4. LEAD COLORS ARE OPTIONAL. LEADS MUST ALWAYS BE NUMBERED AS SHOWN.

CD0005

REV. DESC: REVISE TO SHOW OPTIONAL COLORS			
REV. LTR: E	BY: JLP	REVISED: 01/19/99 10:15	TDR: 0171435
S00000		FILE: AAA00005140	MDL: -
		MTL: -	

BALDOR ELECTRIC Co.

3PH, DV, 9 LEADS