

# ABB BALDOR RELIANCE III

---

## Customer information packet

UCLE3145

3-4.5HP, 3450RPM, 1PH, 60HZ, 3540LC, N

Class - None

Division - Not Applicable

**Specifications**

<b>Enclosure</b>	TEAO
<b>Frame</b>	145TZ
<b>Frame Material</b>	Steel
<b>Frequency</b>	60.00 Hz
<b>Haz Area Class and Group</b>	None
<b>Haz Area Division</b>	Not Applicable
<b>Motor Letter Type</b>	Cap Start, Cap Run
<b>Output @ Frequency</b>	4.500 HP @ 60 HZ 3.000 HP @ 60 HZ
<b>Phase</b>	1
<b>Synchronous Speed @ Frequency</b>	3600 RPM @ 60 HZ
<b>Voltage @ Frequency</b>	230.0 V @ 60 HZ
<b>Agency Approvals</b>	CSA UR
<b>Ambient Temperature</b>	40 °C
<b>Auxiliary Box</b>	NO AUXILLARY BOX
<b>Auxiliary Box Lead Termination</b>	None
<b>Base Indicator</b>	Rigid
<b>Bearing Grease Type</b>	Polyrex EM (-20F +300F)
<b>Blower</b>	None
<b>Current @ Voltage</b>	12.500 A @ 230.0 V 20.000 A @ 208.0 V
<b>Drip Cover</b>	No Drip Cover
<b>Duty Rating</b>	CONT
<b>Efficiency @ 100% Load</b>	82.5 %
<b>Electrically Isolated Bearing</b>	Not Electrically Isolated
<b>Feedback Device</b>	NO FEEDBACK
<b>Front Face Code</b>	Standard
<b>Front Shaft Indicator</b>	None
<b>Heater Indicator</b>	No Heater
<b>High Voltage Full Load Amps</b>	12.5 a
<b>Insulation Class</b>	F

**Part Detail**

<b>Revision</b>	W
<b>Type</b>	AC
<b>Mech. spec.</b>	35E2504
<b>Base</b>	
<b>Status</b>	PRD/A
<b>Elec. spec.</b>	35WGT164
<b>Layout</b>	35LYE2504
<b>Eff. date</b>	01-02-2025
<b>CD Diagram</b>	CD0017A02
<b>Poles</b>	02
<b>Leads</b>	2#14 A PH 30" leads,2#18 B PH 30" leads Y
<b>Proprietary</b>	False
<b>Created date</b>	03-06-2014

<b>Inverter Code</b>	Not Inverter
<b>KVA Code</b>	K
<b>Lifting Lugs</b>	No Lifting Lugs
<b>Locked Bearing Indicator</b>	Locked Bearing
<b>Motor Lead Exit</b>	Pipe Or Pipe Adaptor
<b>Motor Lead Quantity/Wire Size</b>	2 @ 14 AWG, A PH
<b>Motor Lead Termination</b>	Flying Leads
<b>Motor Standards</b>	NEMA
<b>Motor Type</b>	3540LC
<b>Mounting Arrangement</b>	F1
<b>Number of Poles</b>	2
<b>Overall Length</b>	15.62 IN
<b>Power Factor</b>	97
<b>Product Family</b>	General Purpose
<b>Pulley End Bearing Type</b>	Ball
<b>Pulley Face Code</b>	Standard
<b>Pulley Shaft Indicator</b>	Tapped & Key
<b>Rodent Screen</b>	None
<b>RoHS Status</b>	ROHS COMPLIANT
<b>Service Factor</b>	1.00
<b>Shaft Diameter</b>	0.875 IN
<b>Shaft Extension Location</b>	Pulley End
<b>Shaft Ground Indicator</b>	No Shaft Grounding
<b>Shaft Rotation</b>	Reversible
<b>Shaft Slinger Indicator</b>	No Slinger
<b>Speed</b>	3450 rpm
<b>Speed Code</b>	Single Speed
<b>Starting Method</b>	Direct on line
<b>Thermal Device - Bearing</b>	None
<b>Thermal Device - Winding</b>	Normally Closed Thermostat
<b>Vibration Sensor Indicator</b>	No Vibration Sensor
<b>Winding Thermal 1</b>	None
<b>Winding Thermal 2</b>	None

**Nameplate**

<b>NP1279L</b>							
<b>CAT.NO.</b>	UCLE3145						
<b>SPEC.</b>	35E2504T164G1						
<b>HP</b>	3-4.5						
<b>VOLTS</b>	230						
<b>AMP</b>	12.5-18.5						
<b>RPM</b>	3450						
<b>FRAME</b>	143TZ	<b>HZ</b>	60	<b>PH</b>	1		
<b>SER.F.</b>	1.00	<b>CODE</b>	K	<b>DES</b>	-	<b>CL</b>	F
<b>NEMA-NOM-EFF</b>	82.5	<b>PF</b>	97				
<b>RATING</b>	40C AMB-CONT						
<b>CC</b>							
<b>DE</b>	6206	<b>ODE</b>	6203				
<b>ENCL</b>	TEAO	<b>SN</b>					

**NP1263L**

<b>CAT.NO.</b>	UCLE3145						
<b>SPEC.</b>	35E2504T164G1						
<b>HP</b>	3-4.5						
<b>VOLTS</b>	230						
<b>AMP</b>	12.5-18.5						
<b>RPM</b>	3450						
<b>FRAME</b>	143TZ		<b>HZ</b>	60		<b>PH</b>	1
<b>SER.F.</b>	1.00	<b>CODE</b>	K	<b>DES</b>	-	<b>CL</b>	F
<b>NEMA-NOM-EFF</b>	82.5	<b>PF</b>	97				
<b>RATING</b>	40C AMB-CONT						
<b>CC</b>							
<b>DE</b>	6206	<b>ODE</b>	6203				
<b>ENCL</b>	TEAO	<b>SN</b>					

**Accessories**

<b>Part number</b>	<b>Description</b>	<b>Multiplier</b>
35-3300FD	C FACE KIT FARM DUTY 143-5TC ENCL, 6205	A8

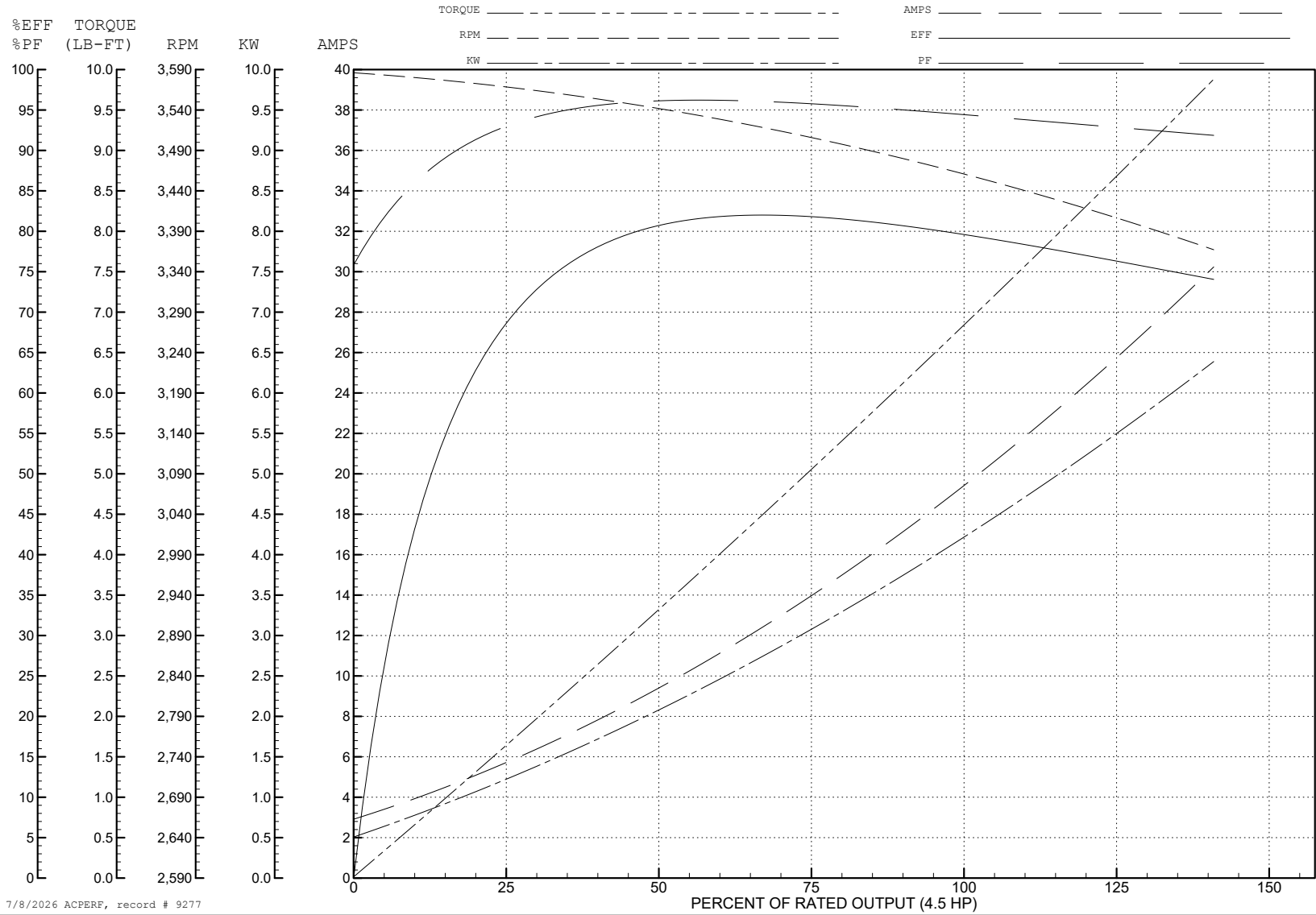
ABB Motors and Mechanical Inc.

WINDING # 35WGT164

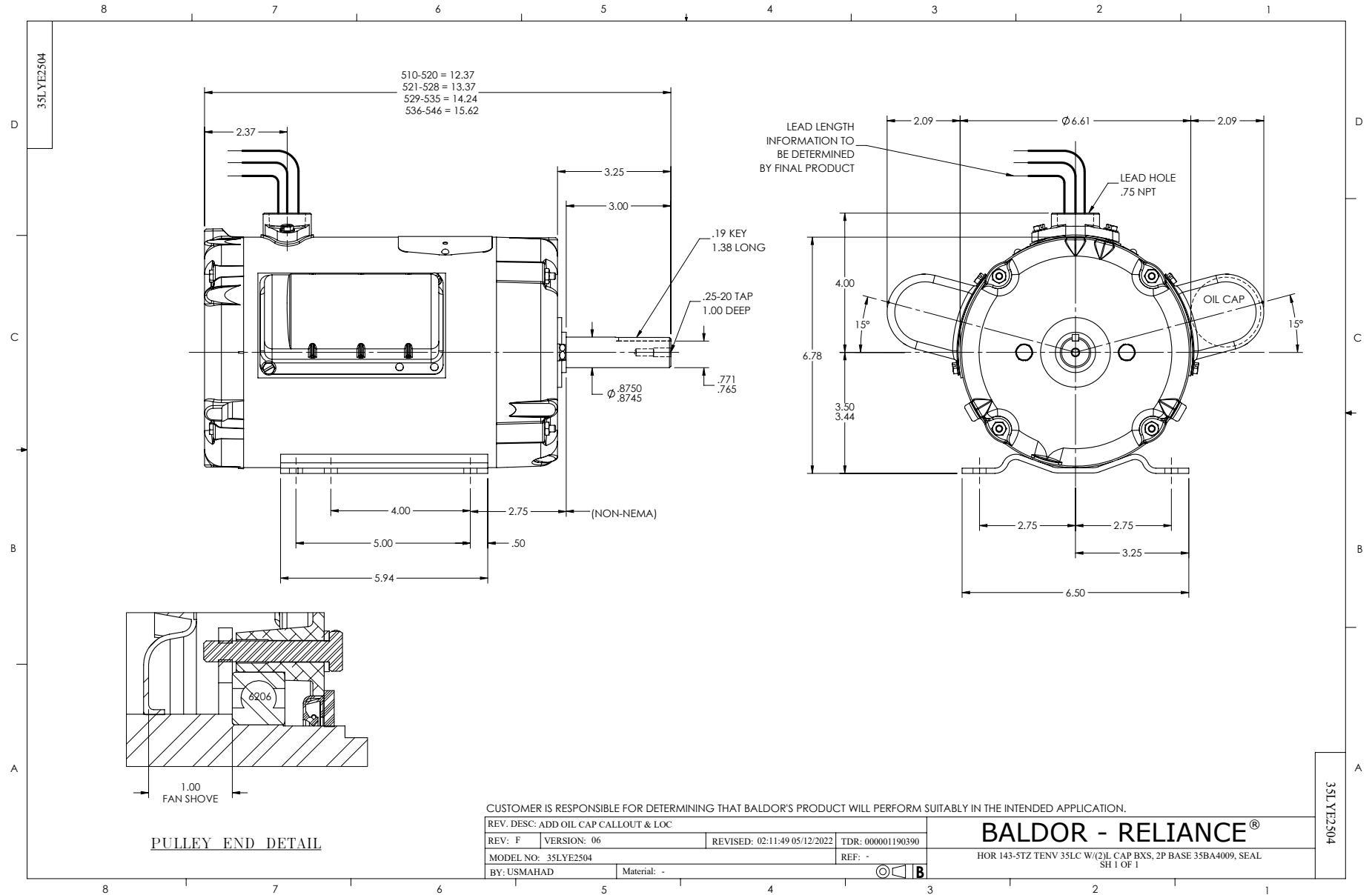
4.5 HP 1 PH 60 HZ 3450 RPM 230 V 3540LC

Typical performance - not guaranteed values.

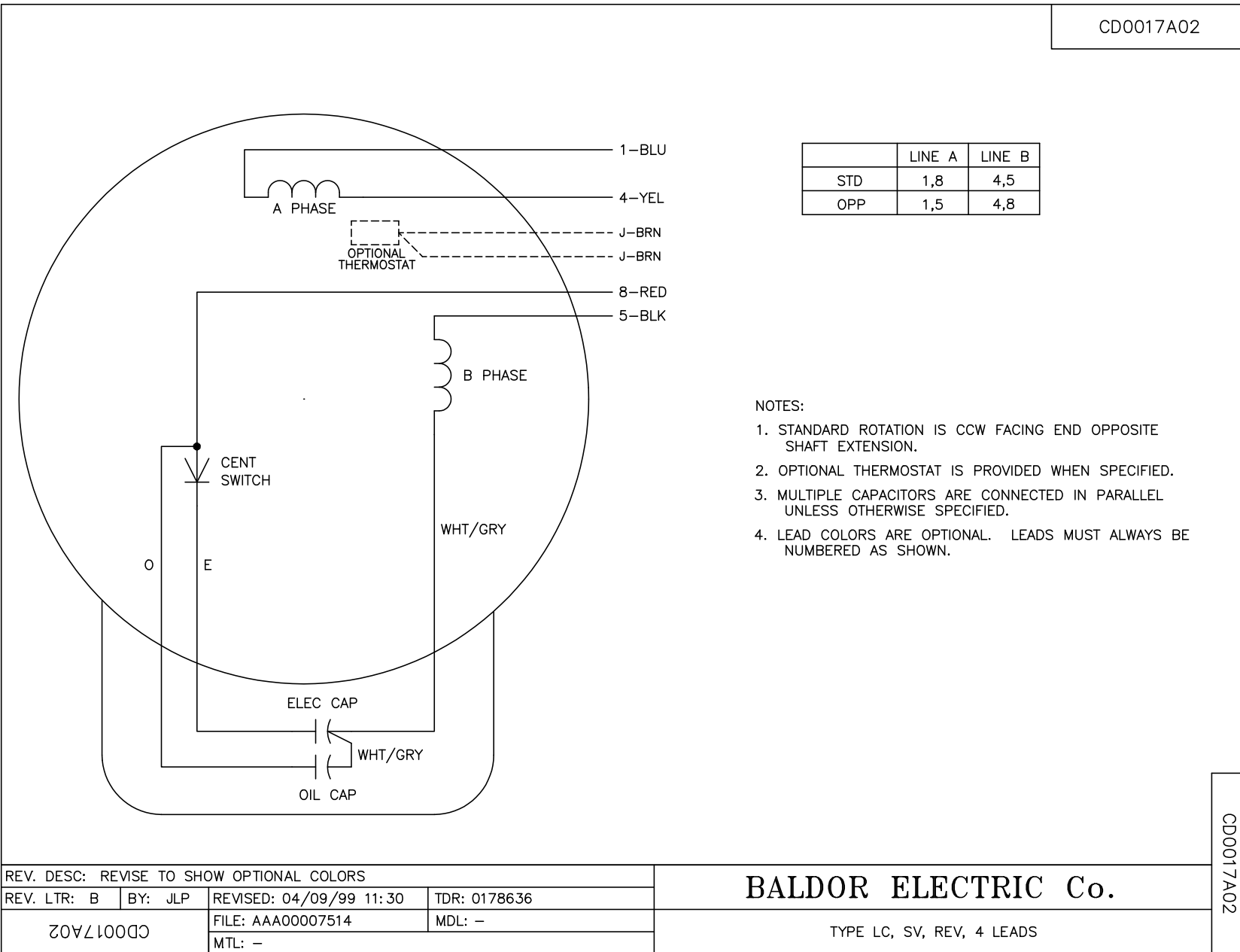
TORQUES (LB-FT): PO=14.6 PU=8 LR=11.7 LRA=108



7/8/2026 ACPERF, record # 9277



CD0017A02



	LINE A	LINE B
STD	1,8	4,5
OPP	1,5	4,8

- NOTES:
1. STANDARD ROTATION IS CCW FACING END OPPOSITE SHAFT EXTENSION.
  2. OPTIONAL THERMOSTAT IS PROVIDED WHEN SPECIFIED.
  3. MULTIPLE CAPACITORS ARE CONNECTED IN PARALLEL UNLESS OTHERWISE SPECIFIED.
  4. LEAD COLORS ARE OPTIONAL. LEADS MUST ALWAYS BE NUMBERED AS SHOWN.

CD0017A02

REV. DESC: REVISE TO SHOW OPTIONAL COLORS			
REV. LTR: B	BY: JLP	REVISED: 04/09/99 11:30	TDR: 0178636
CD0017A02		FILE: AAA00007514	MDL: -
		MTL: -	

**BALDOR ELECTRIC Co.**

TYPE LC, SV, REV, 4 LEADS