



Customer information packet

UCLE153

1.5-3HP, 3450RPM, 1PH, 60HZ, 3532LC, N

Class - None

Division - Not Applicable

Specifications

Enclosure	TEAO
Frame	145TZ
Frame Material	Steel
Frequency	60.00 Hz
Motor Letter Type	Cap Start, Cap Run
Output @ Frequency	3.000 HP @ 60 HZ 1.500 HP @ 60 HZ
Phase	1
Synchronous Speed @ Frequency	3600 RPM @ 60 HZ
Voltage @ Frequency	230.0 V @ 60 HZ
XP Class and Group	None
XP Division	Not Applicable
Agency Approvals	UR CSA
Ambient Temperature	40 °C
Auxillary Box	No Auxillary Box
Auxillary Box Lead Termination	None
Base Indicator	Rigid
Bearing Grease Type	Polyrex EM (-20F +300F)
Blower	None
Current @ Voltage	12.500 A @ 230.0 V 13.700 A @ 208.0 V
Design Code	L
Drip Cover	No Drip Cover
Duty Rating	CONT
Efficiency @ 100% Load	78.0 %
Electrically Isolated Bearing	Not Electrically Isolated
Feedback Device	NO FEEDBACK
Front Face Code	Standard
Front Shaft Indicator	None
Heater Indicator	No Heater
High Voltage Full Load Amps	12.5 a

Part detail

Revision	N
Type	AC
Mech. spec.	35E2504
Base	
Status	PRD/A
Elec. spec.	35WGT138
Layout	35LYE2504
Eff. date	05-16-2022
CD Diagram	CD0017A02
Poles	02
Leads	2#14 A PH 30" leads, 2#18 B PH 30" leads Y
Proprietary	False
Created date	03-05-2014

Insulation Class	F
Inverter Code	Not Inverter
KVA Code	G
Lifting Lugs	No Lifting Lugs
Locked Bearing Indicator	Locked Bearing
Motor Lead Exit	Pipe Or Pipe Adaptor
Motor Lead Quantity/Wire Size	2 @ 14 AWG, A PH
Motor Lead Termination	Flying Leads
Motor Standards	NEMA
Motor Type	3532LC
Mounting Arrangement	F1
Number of Poles	2
Overall Length	14.25 IN
Power Factor	95
Product Family	General Purpose
Pulley End Bearing Type	Ball
Pulley Face Code	Standard
Pulley Shaft Indicator	Tapped & Key
Rodent Screen	None
RoHS Status	ROHS COMPLIANT
Service Factor	1.15
Shaft Diameter	0.875 IN
Shaft Extension Location	Pulley End
Shaft Ground Indicator	No Shaft Grounding
Shaft Rotation	Reversible
Shaft Slinger Indicator	No Slinger
Speed	3450 rpm
Speed Code	Single Speed
Starting Method	Direct on line
Thermal Device - Bearing	None
Thermal Device - Winding	Normally Closed Thermostat
Vibration Sensor Indicator	No Vibration Sensor
Winding Thermal 1	None
Winding Thermal 2	None

Nameplate

NP1279L							
CAT.NO.	UCLE153						
SPEC.	35E2504T138G1						
HP	1.5-3						
VOLTS	230						
AMP	12.5						
RPM	3450						
FRAME	143TZ	HZ	60	PH	1		
SER.F.	1.15	CODE	G	DES	L	CL	F
NEMA-NOM-EFF	78	PF	95				
RATING	40C AMB-CONT						
CC	USABLE AT 208V						13.7
DE	6206	ODE	6203				
ENCL	TEAO	SN					

NP1263L

CAT.NO.	UCLE153						
SPEC.	35E2504T138G1						
HP	1.5-3						
VOLTS	230						
AMP	12.5						
RPM	3450						
FRAME	143TZ		HZ	60		PH	1
SER.F.	1.15	CODE	G	DES	L	CL	F
NEMA-NOM-EFF	78	PF	95				
RATING	40C AMB-CONT						
CC						USABLE AT 208V	13.7
DE	6206	ODE	6203				
ENCL	TEAO	SN					

Accessories

Part number	Description	Multiplier
35-3300FD	C FACE KIT FARM DUTY 143-5TC ENCL, 6205	A8

AC Induction Motor Performance Data

Record # 55935

Typical performance - not guaranteed values

Winding: 35WGT138-R005		Type: 3532LC	Enclosure: TEAO	
Nameplate Data			230 V, 60 Hz: Single Voltage Motor	
Rated Output (HP)	1.5-3	Full Load Torque	4.54 LB-FT	
Volts	230	Start Configuration	direct on line	
Full Load Amps	12.5	Breakdown Torque	12.1 LB-FT	
R.P.M.	3450	Pull-up Torque	8.54 LB-FT	
Hz	60	Phase	1	Locked-rotor Torque
NEMA Design Code	L	KVA Code	G	Starting Current
Service Factor (S.F.)	1.15	Power Factor	95	No-load Current
NEMA Nom. Eff.	78	Temp. Rise @ Rated Load	0.80752 Ω A Ph 1.4854 Ω B Ph	
Rating - Duty	40C AMB-CONT			

Load Characteristics 230 V, 60 Hz, 3 HP

% of Rated Load	25	50	75	100	125	150	S.F.
Power Factor	91	97	98	98	98	98	98
Efficiency	62.1	75.7	79.6	79.1	77	73.1	77.8
Speed	3556.5	3524.6	3486.3	3442.2	3384.1	3316.4	3407
Line amperes	4.28	6.66	9.37	12.4	16	20.3	14.6

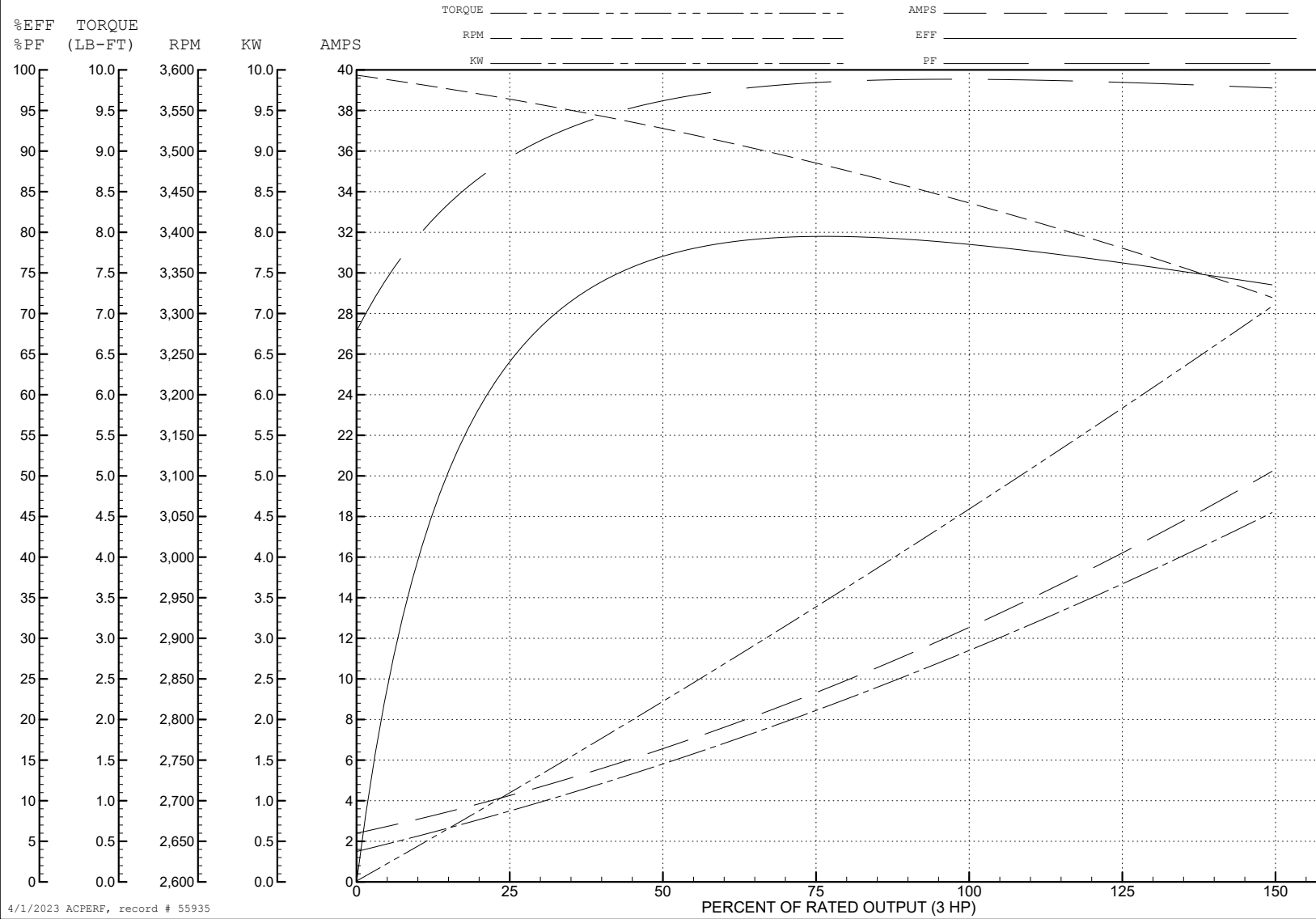
ABB Motors and Mechanical Inc.

WINDING # 35WGT138

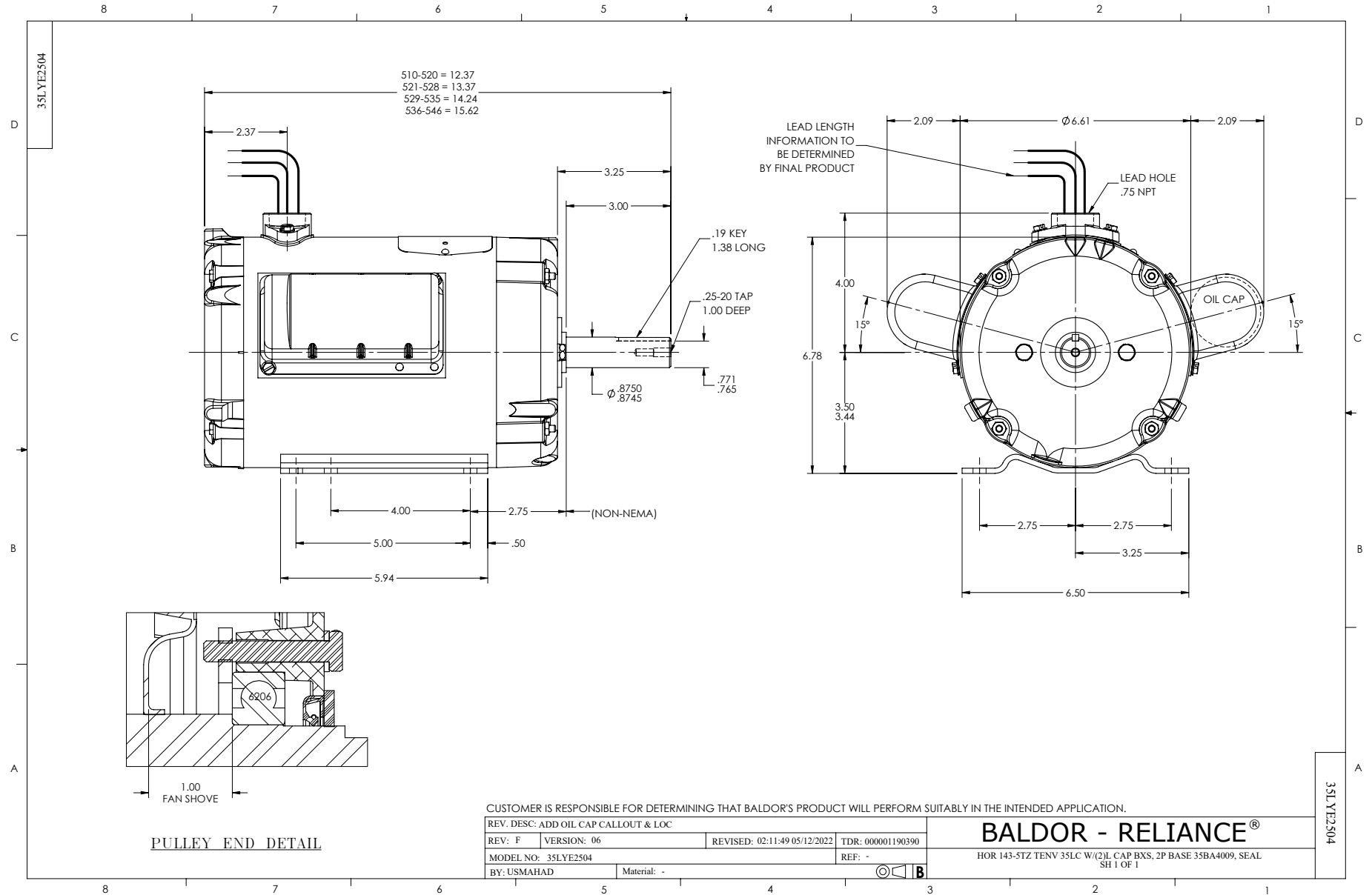
3 HP 1 PH 60 HZ 3450 RPM 230 V 3532LC

Typical performance - not guaranteed values.

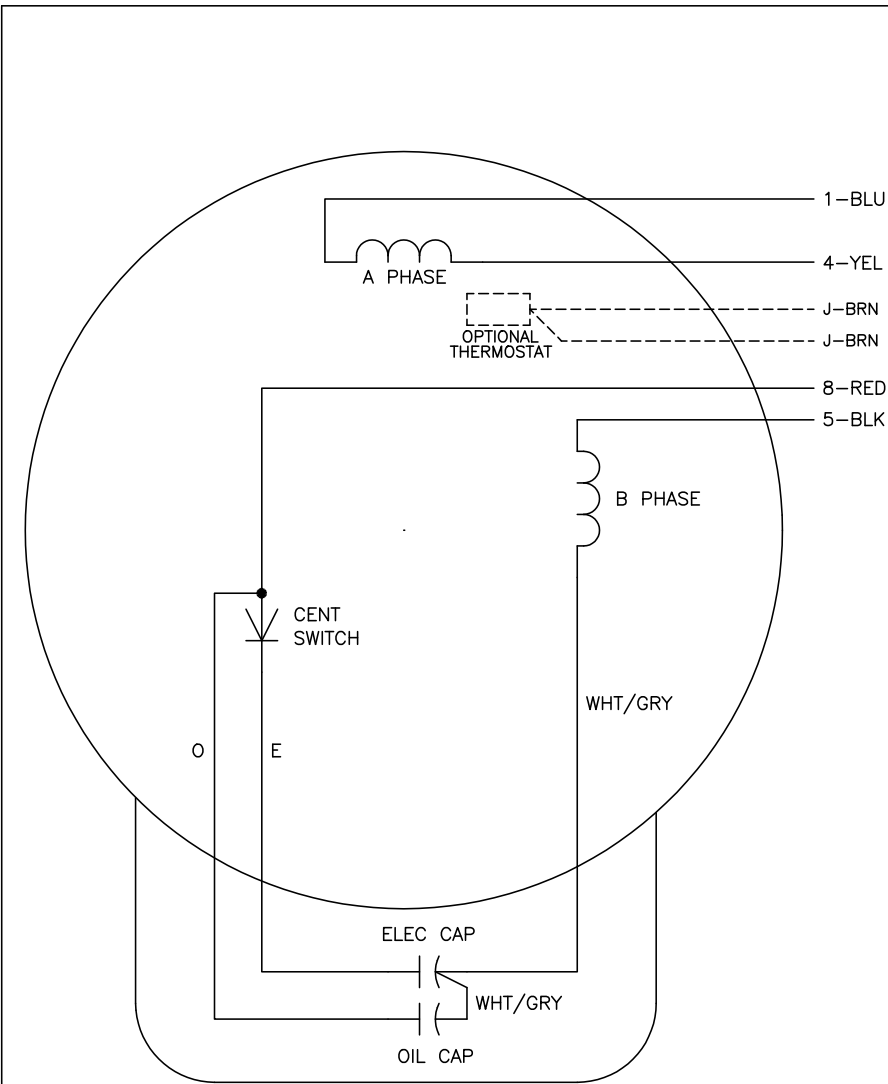
TORQUES (LB-FT): PO=12.1 PU=8.54 LR=10.1 LRA=80



4/1/2023 ACPERF, record # 55935



CD0017A02



	LINE A	LINE B
STD	1,8	4,5
OPP	1,5	4,8

NOTES:

1. STANDARD ROTATION IS CCW FACING END OPPOSITE SHAFT EXTENSION.
2. OPTIONAL THERMOSTAT IS PROVIDED WHEN SPECIFIED.
3. MULTIPLE CAPACITORS ARE CONNECTED IN PARALLEL UNLESS OTHERWISE SPECIFIED.
4. LEAD COLORS ARE OPTIONAL. LEADS MUST ALWAYS BE NUMBERED AS SHOWN.

CD0017A02

REV. DESC: REVISE TO SHOW OPTIONAL COLORS			
REV. LTR: B	BY: JLP	REVISED: 04/09/99 11:30	TDR: 0178636
CD0017A02		FILE: AAA00007514	MDL: -
		MTL: -	

BALDOR ELECTRIC Co.

TYPE LC, SV, REV, 4 LEADS