

BALDOR • RELIANCE

Customer information packet

UCL7510

7.5-10.5 AIR OVERHP, 3450RPM, 1PH, 60HZ, 215

Class - None

Division - Not Applicable

Copyright © All product information within this document is subject to ABB Motors and Mechanical Inc. copyright © protection, unless otherwise noted.

9/9/2024 5:54:43 AM

Specifications

Enclosure	OPAO
Frame	215Z
Frame Material	Steel
Frequency	60.00 Hz
Haz Area Class and Group	None
Haz Area Division	Not Applicable
Motor Letter Type	Cap Start, Induction Run
Output @ Frequency	7.500 HP @ 60 HZ 10.500 HP @ 60 HZ
Phase	1
Synchronous Speed @ Frequency	3600 RPM @ 60 HZ
Voltage @ Frequency	230.0 V @ 60 HZ
Agency Approvals	UR CSA
Ambient Temperature	40 °C
Auxillary Box	No Auxillary Box
Auxillary Box Lead Termination	None
Base Indicator	Rigid
Bearing Grease Type	Polyrex EM (-20F +300F)
Blower	None
Current @ Voltage	37.000 A @ 230.0 V
Design Code	L
Drip Cover	No Drip Cover
Duty Rating	CONT
Efficiency @ 100% Load	81.0 %
Electrically Isolated Bearing	Not Electrically Isolated
Feedback Device	NO FEEDBACK
Front Face Code	Standard
Front Shaft Indicator	None
Heater Indicator	No Heater
High Voltage Full Load Amps	37.0 a
Insulation Class	F

Part detail

Revision	L
Type	AC
Mech. spec.	37E767
Base	
Status	PRD/A
Elec. spec.	37WGZ089
Layout	37LYE767
Eff. date	03-18-2024
CD Diagram	CD0086A01
Poles	02
Leads	2#8 A PH,2#14 B PH 32" from adapte Y
Proprietary	False
Created date	03-05-2010

Inverter Code	Not Inverter
KVA Code	F
Lifting Lugs	Standard Lifting Lugs
Locked Bearing Indicator	Locked Bearing
Motor Lead Exit	Pipe Or Pipe Adaptor
Motor Lead Quantity/Wire Size	2 @ 8 AWG, A PH
Motor Lead Termination	Flying Leads
Motor Standards	NEMA
Motor Type	3729L
Mounting Arrangement	F1
Number of Poles	2
Overall Length	17.44 IN
Power Factor	82
Product Family	General Purpose
Pulley End Bearing Type	Sealed Bearing
Pulley Face Code	Standard
Pulley Shaft Indicator	Tapped & Key
Rodent Screen	Included
Service Factor	1.00
Shaft Diameter	1.125 IN
Shaft Extension Location	Pulley End
Shaft Ground Indicator	No Shaft Grounding
Shaft Rotation	Reversible
Shaft Slinger Indicator	No Slinger
Speed	3450 rpm
Speed Code	Single Speed
Starting Method	Direct on line
Thermal Device - Bearing	None
Thermal Device - Winding	Normally Closed Thermostat
Vibration Sensor Indicator	No Vibration Sensor
Winding Thermal 1	None
Winding Thermal 2	None

Nameplate

NP1279L							
CAT.NO.	UCL7510						
SPEC.	37E767Z089G1						
HP	7.5-10.5 AIR OVER						
VOLTS	230						
AMP	37-46						
RPM	3450						
FRAME	215Z	HZ	60	PH	1		
SER.F.	1.00	CODE	F	DES	L	CL	F
NEMA-NOM-EFF	81	PF	82				
RATING	40C AMB-CONT						
CC						USABLE AT 208V	N/A
DE	6307	ODE	6206				
ENCL	OPAO	SN					

NP1263L

CAT.NO.	UCL7510									
SPEC.	37E767Z089G1									
HP	7.5-10.5 AIR OVER									
VOLTS	230									
AMP	37-46									
RPM	3450									
FRAME	215Z			HZ	60		PH	1		
SER.F.	1.00	CODE	F	DES	L	CL	F			
NEMA-NOM-EFF	81	PF	82							
RATING	40C AMB-CONT									
CC										
DE	6307	ODE	6206							
ENCL	OPAO	SN								

AC Induction Motor Performance Data

Record # 12684

Typical performance - not guaranteed values

Winding: 37WGZ089-R001		Type: 3729L		Enclosure: OPAO	
Nameplate Data			230 V, 60 Hz: Single Voltage Motor		
Rated Output (HP)	7.5-10.5 AIR OVER		Full Load Torque	15.8 LB-FT	
Volts	230		Start Configuration	direct on line	
Full Load Amps	37-46		Breakdown Torque	36 LB-FT	
R.P.M.	3450		Pull-up Torque	16 LB-FT	
Hz	60	Phase	1	Locked-rotor Torque	17 LB-FT
NEMA Design Code	L	KVA Code	F	Starting Current	205 A
Service Factor (S.F.)	1		No-load Current	25.7 A	
NEMA Nom. Eff.	81	Power Factor	82	Line-line Res. @ 25°C	0.194 Ω A Ph 0.743 Ω B Ph
Rating - Duty	40C AMB-CONT		Temp. Rise @ Rated Load		

Load Characteristics 230 V, 60 Hz, 10.5 HP

% of Rated Load	25	50	75	100	125	150
Power Factor	46	65	76	82	85	86
Efficiency	64.8	76	79.3	79.8	78.7	76.3
Speed	3570	3544	3515	3583	3444	3397
Line amperes	28.5	34.3	42.2	52	63.6	77.5

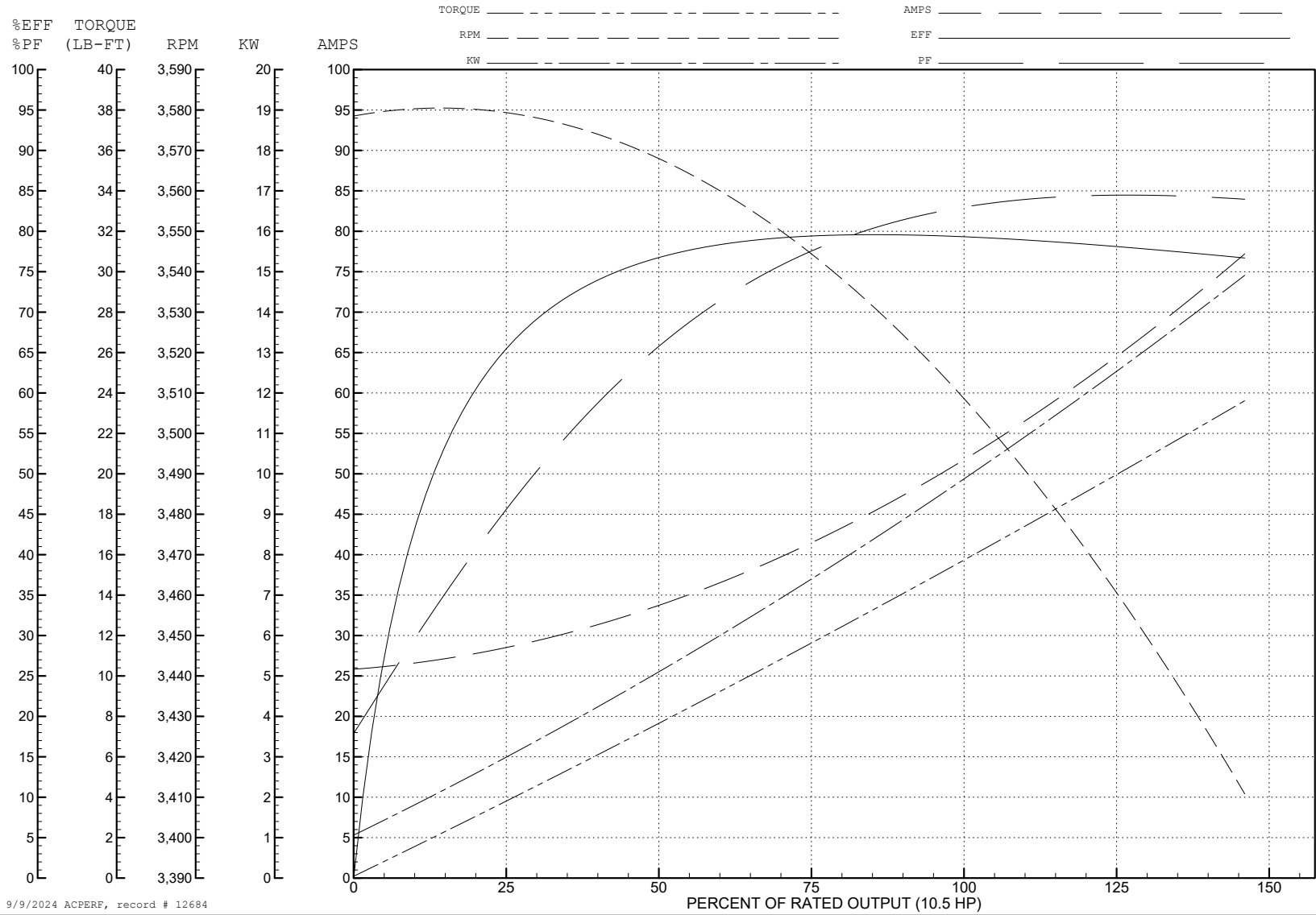
ABB Motors and Mechanical Inc.

WINDING # 37WGZ089

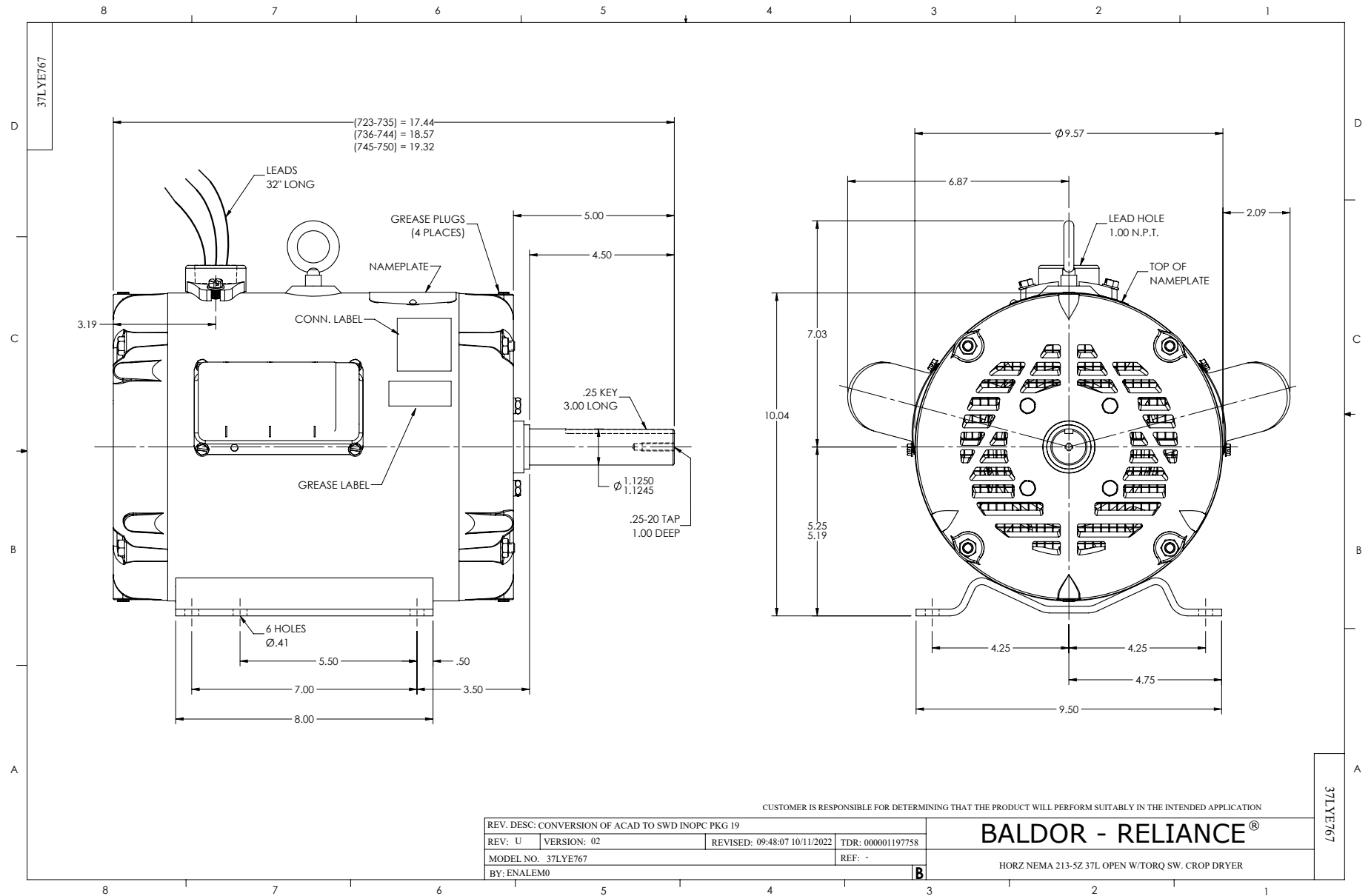
10.5 HP 1 PH 60 HZ 3450 RPM 230 V 3729L

Typical performance - not guaranteed values.

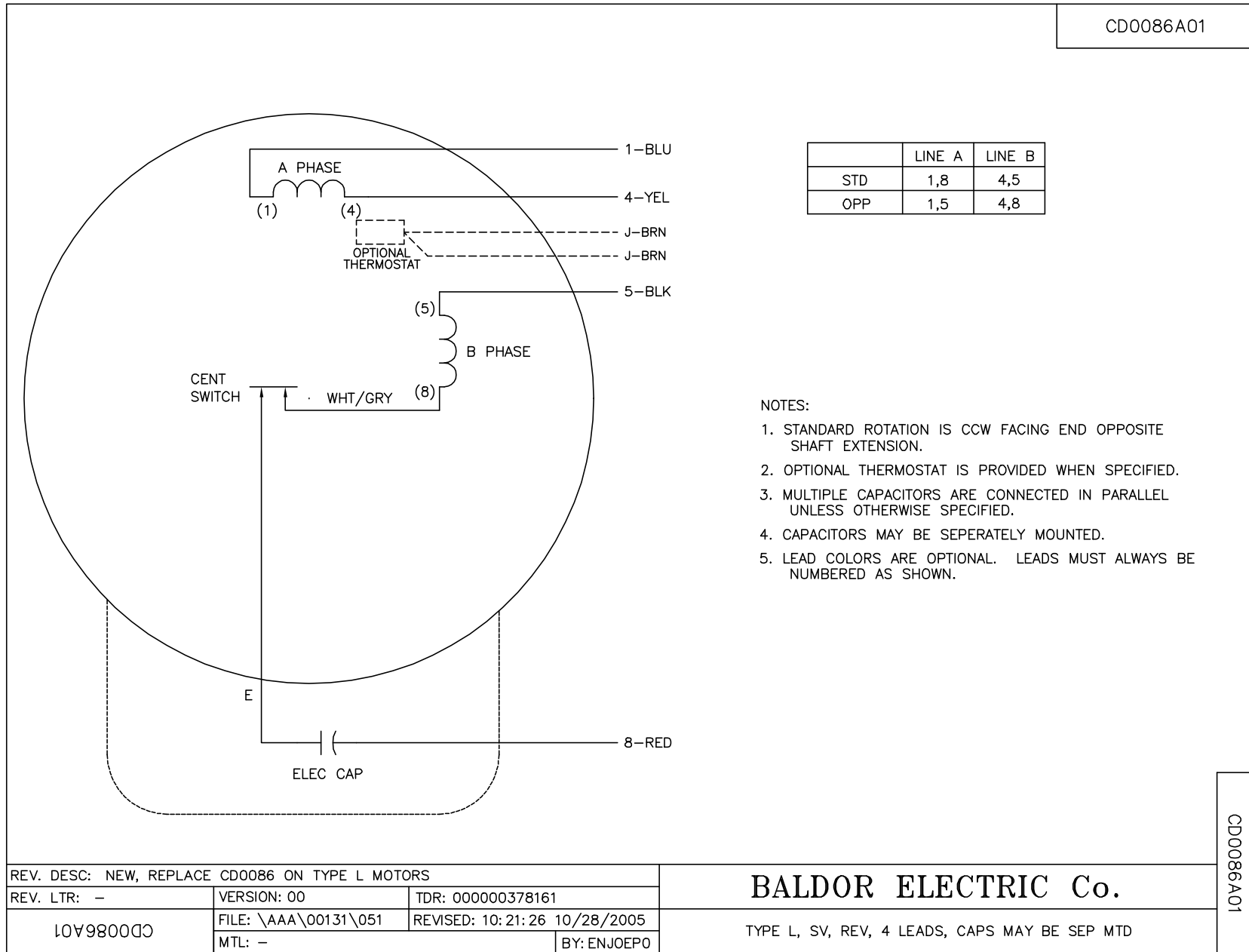
TORQUES (LB-FT): PO=36 PU=16 LR=17 LRA=205



9/9/2024 ACPERF, record # 12684



CD0086A01



	LINE A	LINE B
STD	1,8	4,5
OPP	1,5	4,8

NOTES:

1. STANDARD ROTATION IS CCW FACING END OPPOSITE SHAFT EXTENSION.
2. OPTIONAL THERMOSTAT IS PROVIDED WHEN SPECIFIED.
3. MULTIPLE CAPACITORS ARE CONNECTED IN PARALLEL UNLESS OTHERWISE SPECIFIED.
4. CAPACITORS MAY BE SEPERATELY MOUNTED.
5. LEAD COLORS ARE OPTIONAL. LEADS MUST ALWAYS BE NUMBERED AS SHOWN.

REV. DESC: NEW, REPLACE CD0086 ON TYPE L MOTORS		
REV. LTR: -	VERSION: 00	TDR: 000000378161
LOV980000	FILE: \AAA\00131\051	REVISED: 10:21:26 10/28/2005
	MTL: -	BY: ENJOEPO

BALDOR ELECTRIC Co.

TYPE L, SV, REV, 4 LEADS, CAPS MAY BE SEP MTD

CD0086A01